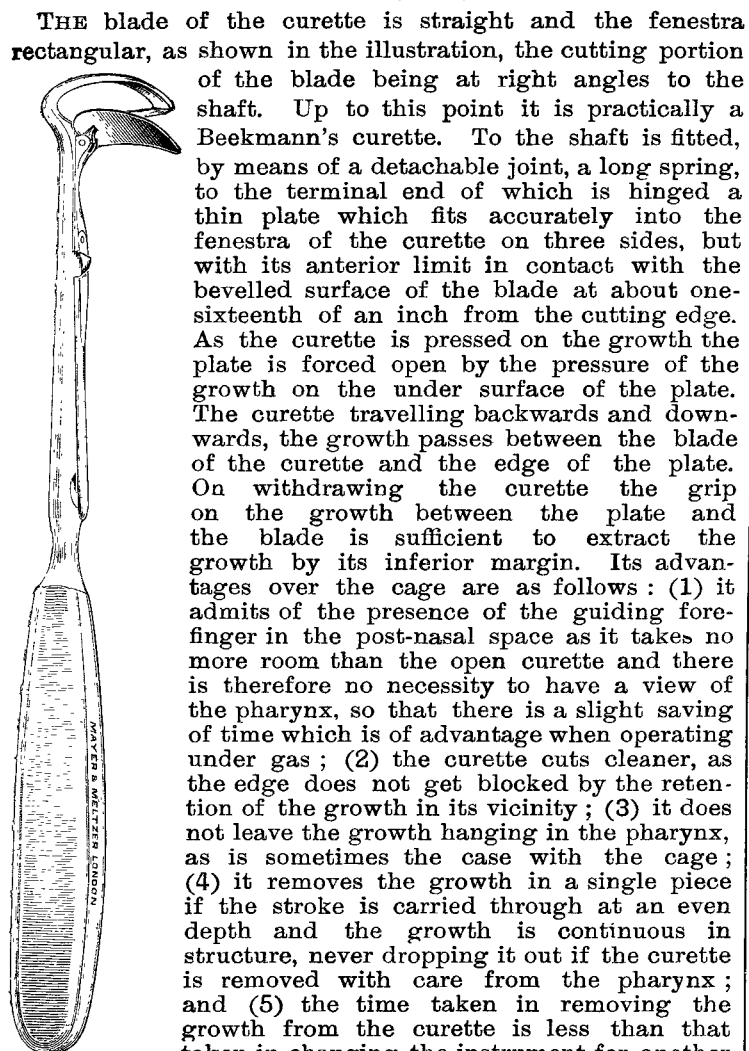


## New Inventions.

### THE SPRING-GRIP CURETTE FOR THE REMOVAL OF ADENOIDS.



one. I am indebted to Messrs. Mayer and Meltzer of Great Portland-street, London, W., for the care they have taken in carrying out the design.

MACKAY MACDONALD M.B., B.C. Cantab.,  
Senior Clinical Assistant, Throat Department,  
Harley-street, W. King's College Hospital.

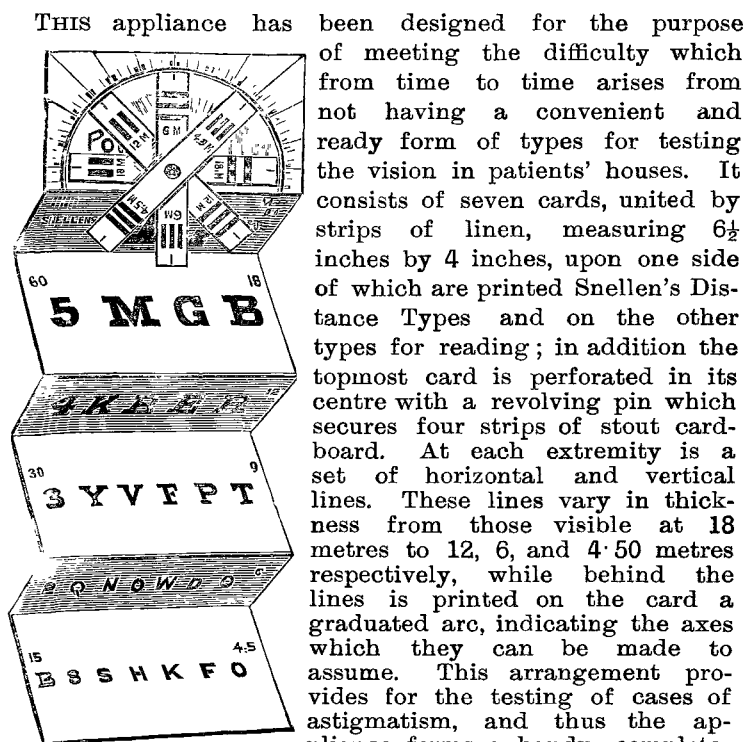
### IMPROVEMENTS IN HANSOMS.

IN THE LANCET of April 18th, p. 1119, we discussed under the heading "The Objections to the Hansom," the various faults to be found in "the gondola of London" and at the same time we expressed our astonishment that no light, comfortable, four-wheeled open vehicles were to be found in London. We now learn that a consignment of small victorias is coming over from Paris, a fact we are very pleased to learn, and we can only say that we wish them fine weather. But with regard to the hansom there has been brought to our notice a new form of hansom which certainly is free from most of the faults to which we took objection as existing in the present style. The cab in question is called the Alington cab and instead of the ordinary doors and guillotine window possesses semicircular doors, with windows in them which move up and down in the ordinary way. These doors are opened or closed simultaneously by the driver and getting into or out of the cab is thereby rendered easy. The cab is fitted with a band-brake acting on the hubs of both axles, a piece of apparatus which we think is most desirable. Curiously enough, however, the patentees inform us that the members of the London cab trade, with that hidebound conservatism which is losing our country so much trade, refuse to use the brake on the ground that they never heard of a brake for a two-wheeled vehicle. It is quite true that in the south of England, at

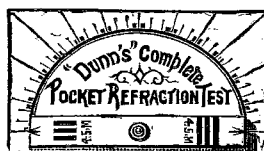
any rate, the simple tyre brake acting on both wheels which is so common in foreign countries is never used, the only brake being the iron-shod drag-pole which sticks out behind and on to which the body of the cart is tilted. To our minds the Alington cab is a great improvement upon the ordinary hansom. Of course, if the doors are shut and the windows are open it is draughty, but even with the windows up the ventilation is good and the sensation is that of driving in a small brougham. From a personal trial of the cab we can congratulate the inventor on the comfort and comparative safety of his vehicle. The cabs can be seen at, or hired from, Mr. J. E. Gentle, Old Manor Yard, adjoining Earl's Court Station, but as yet there are only a few plying for hire.

We have also received from Mr. W. F. Stevenson of Boscombe a sketch and description of two improvements applied by him to the ordinary hansom. One is the substitution of a revolving glass hood in place of the guillotine window and the other is the substitution of a wheel on the "gravel iron" in place of the usual loop of iron. Neither of these improvements is new and the latter was brought to our notice in 1900 by Captain Dickson and described in THE LANCET of Sept. 29th, 1900, p. 981. The former modification has been applied to hansoms for some years, but both modifications are among the first to suggest themselves to anybody who studies the matter and we do not for a moment suppose that Mr. Stevenson was aware that his ideas had been anticipated.

### TEST-TYPES FOR THE POCKET.



and compact visual test, especially adapted for use in patients' homes. The whole folds into a small space occupying about 6½ inches by 4½ inches by ½th of an inch, and can be readily carried in the pocket. The publisher is Mr. F. Davidson, Optician, 140, Great Portland-street, London, W., who supplies it at a trifling cost.



PERCY DUNN, F.R.C.S. Eng.,  
Ophthalmic Surgeon to the West London Hospital; Lecturer  
on Ophthalmology at the West London  
Wimpole-street, W. Post-Graduate College.

CROWNHILL CONVALESCENT HOME.—The annual meeting of the subscribers to the Crownhill Convalescent Home, near Plymouth, was held on May 1st. The report stated that during the past year 259 patients had been admitted. The financial statement showed that the expenditure had amounted to £520 and that an adverse balance of £29 remained against the institution. Dr. C. A. Hingston, the founder of the home, was reappointed honorary physician.