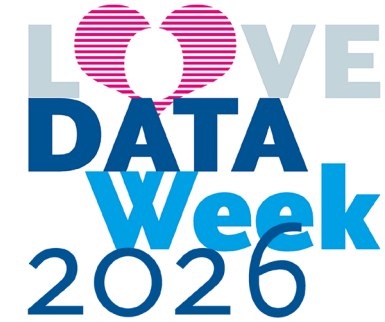


CAS FDM OR: HOW WE LEARNED TO STOP WORRYING AND LOVE THE DATA

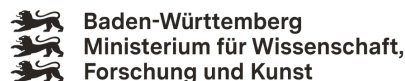


OUTLINE AND INSIGHTS INTO THE CAS FDM OFFERED BY THE STATE INITIATIVE BWFDM

BENJAMIN SCHAEFER (BWFDM | TEAM OPEN SCIENCE | KIM) | 11.02.2026 | OPEN SCIENCE MEET-UP



GEFÖRDERT VOM:



bwFDM PROJEKTPARTNER:



UNIVERSITÄT
HEIDELBERG
ZUKUNFT
SEIT 1386

DURCHGEFÜHRT MIT:



WHO IS SPEAKING?



Lynchpin | [Thamizhparithi Maari](#) | [CC-BY-SA 3.0](#) |
Wikimedia Commons

BENJAMIN SCHÄFER

BWFDm | TEAM OPEN SCIENCE | KIM | UNIVERSITY OF
KONSTANZ

- MANAGE MOODLE COURSE
- SUPPORT LECTURERS & PARTICIPANTS
- ADVANCE LEARNING CONTENT
- BACKGROUND IN SOCIOLOGY (B.A.) & GAME STUDIES (M.Sc.)



TODAY'S AGENDA

- 01 **WHAT THE CAS?**
OUTLINE, CONTENTS, MICROCREDENTIALS, PROCEDURE

- 02 **WHENCE THE CAS?**
BLENDED LEARNING, DIDACTICS, MOODLE

- 03 **WHITHER THE CAS?**
LEARNINGS, IMPROVEMENTS, CHANGES

- 04 **Q&A THE CAS!**
QUESTIONS, ANSWERS, EXCHANGE, DISCUSSION




01 – WHAT THE CAS? – OUTLINE

- CERTIFICATE OF ADVANCED STUDIES (MASTER LEVEL STUDIES)
- SIX AREAS RELEVANT TO RDM
- WITH 26 COURSES OVER NINE MONTHS (INCL. WRITTEN PAPER)
- 19 LECTURERS FROM GERMANY AND SWITZERLAND WITH FOCUS ON EXPERTS FROM BADEN-WÜRTTEMBERG
- MICROCREDENTIALS IN THREE AREAS
- COURSE LANGUAGE: GERMAN



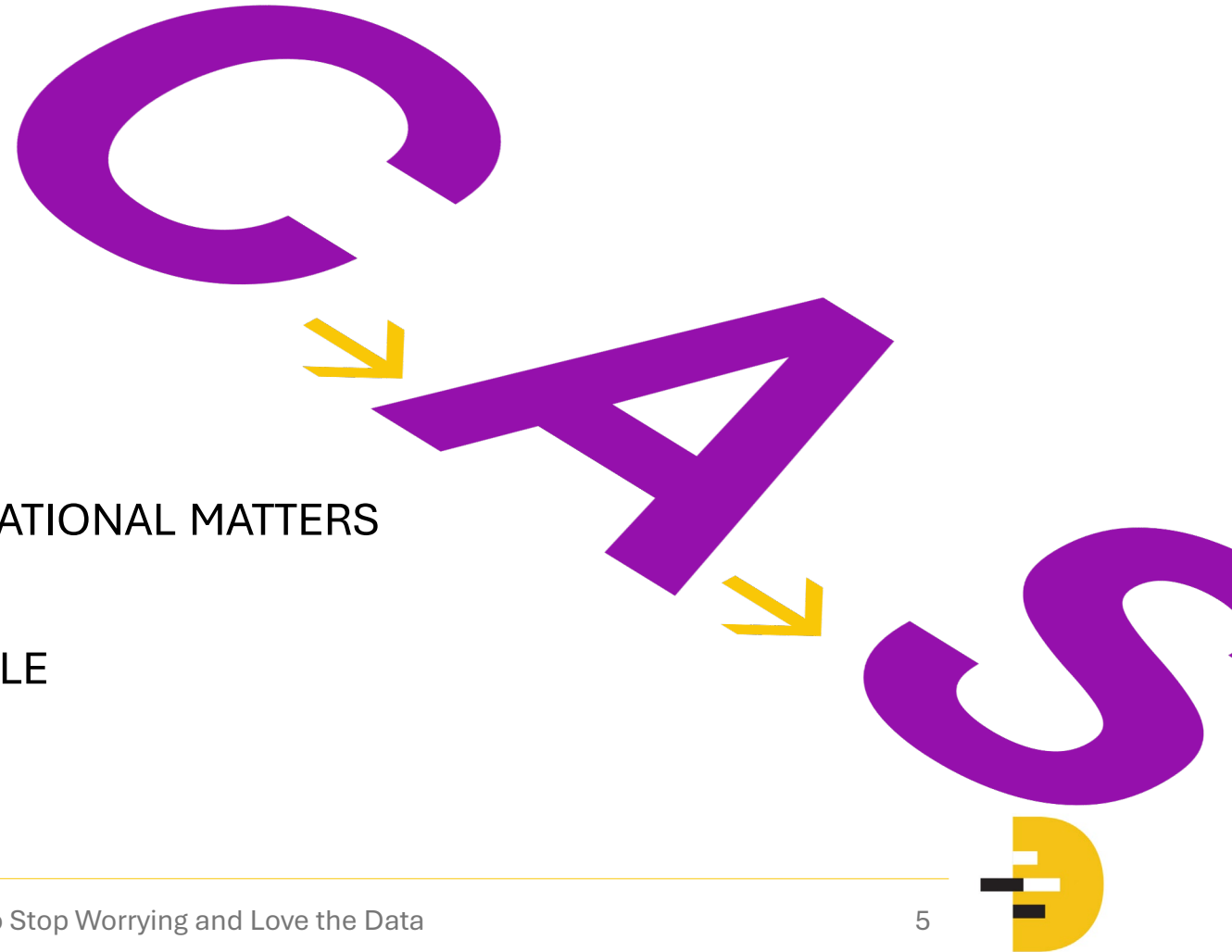
01 – WHAT THE CAS? – CONTENT

- SIX MAIN THEMATIC AREAS
 - RDM Basics (MC)
 - Data Organisation
 - Law & Ethics (MC)
 - Technical Infrastructure (MC)
 - Consulting, Teaching, and Project Management
 - Data Manipulation & Version Control
- MOODLE WITH E-LEARNING AND OTHER ACTIVITIES
- ONLINE LESSONS

The letters 'CAS' are written in a large, bold, purple, sans-serif font. They are positioned diagonally within a large, white, outlined diamond shape that occupies the right half of the slide.

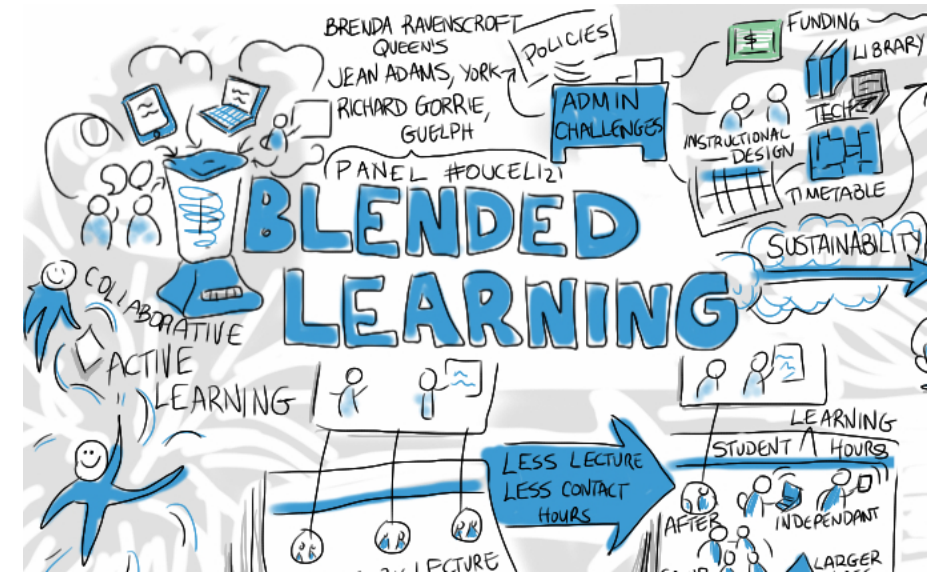
01 – WHAT THE CAS? – PROCEDURE

- LECTURE WEEK
 - Three to four hours of asynchronous preparation
 - Three hour lecture on Fridays
 - One hour for follow-up
- FORUMS IN MOODLE FOR DISCUSSION & EXCHANGE
- E-MAIL FOR ADMINISTRATIVE OR ORGANISATIONAL MATTERS
- FOR MC: ESSENTIAL EXERCISES IN MOODLE



02 – WHENCE THE CAS? – BLENDED LEARNING

- EXTRA OCCUPATIONAL
- FLEXIBILITY THROUGH ASYNCHRONOUS PREPARATION PHASE
- CONTACT TO EXPERTS THROUGH SYNCHRONOUS LECTURES
- CONTINUITY THROUGH MOODLE COURSE



[N.N.] | [Giulia Forsythe](#) | CC-0 1.0 | [Wikimedia Commons](#)



02 – WHENCE THE CAS? – DIDACTICS

- SITUATED LEARNING / AUTHENTIC LEARNING
 - Real (complex / authentic) challenges in RDM
 - Reflective Practitioner
- ANCHORED INSTRUCTIONS
 - Applied knowledge transfer
 - Create authentic challenges with embedded data design
- CONSTRAINTS – AFFORDANCES – ATTUNEMENTS
 - If-Then-Relations in problem spaces
 - Learn social practices, patterns, and communication conventions



[N.N.] | [N.N.] | CC-0 1.0 | [pxhere](#)



02 – WHENCE THE CAS? – MOODLE

- LEARNING MANAGEMENT SYSTEM – MOODLE

- Lecturers provide their own materials
- Support and oversight by us
- Specific activities that structure materials
- Testing activities for Microcredential acquisition

- H5P-BASED E-LEARNING MODULES

- Integrated in Moodle
- Sporadic usage throughout the course

VIRTUELLE AKADEMIE

Startseite Dashboard Meine Kurse Impressum Datenschutzhinweis

Arbeitsanweisungen für die einzelnen LV jeweils genau durch, so dass Ihr gut vorbereitet in den Kontaktunterricht kommt.

Da wir mit dem Kurs erst am Präsenztage so richtig starten, wartet diese Woche nur ein kleines Einführung auf Euch. Weiter unten findet Ihr noch die Präsentation zum Präsenztage und wichtige Hinweise für alle, c LE1 ein Microcredential erwerben möchten.

Klickt Euch also zum Starten auf der interaktiven Kurslandschaft durch die Module. Dort findet Ihr jeweils ersten Hinweis darauf, was Euch in der jeweiligen Kurseinheit erwarten wird.

Und keine Panik, wir schauen uns die Kurslandschaft am Präsenztage nochmal gemeinsam an!

H5P Kurslandschaft

Kurslandkarte 0 / 9



03 – WHITHER THE CAS? – LEARNINGS

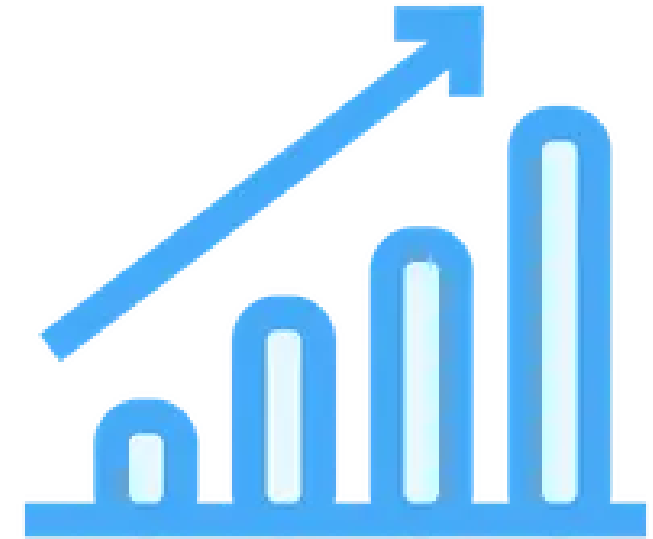
- EVALUATION OF EVERY LECTURER
- FOCUS RIGHT NOW ON FREE TEXT ANSWERS
- **OUR LECTURERS ARE WONDERFUL**
- TIME MANAGEMENT (ALLOCATION)
- TASK FORMULATION
- PRACTICAL EXERCISES / HANDS-ON EXPERIENCE

🌐	2026-03-13_LV-522	👁	Bereit	📄 LVE-LV52-2-CASFDM	29.10.2025	-
🌐	2026-03-06_LV-521	👁	Bereit	📄 LVE-LV52-1-CASFDM	29.10.2025	-
🌐	2026-02-27_LV-51	👁	Bereit	📄 LVE-LV51-CASFDM	29.10.2025	-
🌐	2026-02-20_LV-45	👁	Bereit	📄 LVE-LV45-CASFDM	29.10.2025	-
🌐	2026-02-06_LV-43	👁	Daten vorhanden	📄 LVE-LV43-CASFDM	29.10.2025	06.02.2
🌐	2026-01-30_LV-42	👁	Ausgewertet	📄 LVE-LV42-CASFDM	29.10.2025	05.02.2
🌐	2026-01-23_LV-412	👁	Ausgewertet	📄 LVE-LV41-2-CASFDM	29.10.2025	30.01.2
🌐	2026-01-16_LV-411	👁	Ausgewertet	📄 LVE-LV41-1-CASFDM	29.10.2025	27.01.2
🌐	2026-01-09_LV-35	👁	Ausgewertet	📄 LVE-LV35-CASFDM	29.10.2025	15.01.2
🌐	2025-12-19_LV-34	👁	Ausgewertet	📄 LVE-LV34-CASFDM	29.10.2025	07.01.2
🌐	2025-12-12_LV-33	👁	Ausgewertet	📄 LVE-LV33-CASFDM	29.10.2025	18.12.2
🌐	2025-12-05_LV-32	👁	Ausgewertet	📄 LVE-LV32-CASFDM	29.10.2025	09.12.2
🌐	2025-11-28_LV-31	👁	Ausgewertet	📄 LVE-LV31-CASFDM	29.10.2025	05.12.2
🌐	2025-11-21_LV-30	👁	Ausgewertet	📄 LVE-LV30-CASFDM	29.10.2025	26.11.2



03 – WHITHER THE CAS? – IMPROVEMENTS

- COLLECTION OF RELEVANT RESOURCES
- CLASSIFY PREPARATION TASKS AS ESSENTIAL / OPTIONAL
- LEARN HOW CERTAIN MOODLE ACTIVITIES WORK (AND FIND WORKAROUNDS)



Growth Icon | [Full Ratio](#) | [CC-BY 4.0](#) | [Icon Scout](#)



03 – WHITHER THE CAS? – CHANGES (TENTATIVE)

- OUTSOURCE INPUT IN SHORT TUTORIAL VIDEOS
- CREATE E-LEARNING MODULES FOR INTERACTIVE KNOWLEDGE ACQUISITION, EXPLORATION AND ASSESSMENT
- ASSESSMENT OF DEVELOPING A MODULAR SERIOUS GAME ACCOMPANYING THE COURSE



[N.N.] | [Nataliya Vaitkevich](#) | [Pexels License](#) | [Pexels](#)



INTERLUDE – SELL THE CAS!

- 17 PARTICIPANTS FOR WHOLE COURSE
- 3 PARTICIPANTS FOR EACH MICROCREDENTIAL
- NEXT START OCTOBER 2026 (SIGN-UP STARTING IN MARCH 2026)
- INFO-EVENT: MARCH 3RD, 2026 VIA ZOOM
- NEWSLETTER REGISTRATION (SEE QR-CODE)
- COSTS CAS:
 - 2480 Euro General
 - 1980 Euro Baden-Württemberg Institution Rabate
- COSTS MICROCREDENTIAL (EACH):
 - 480 Euro General
 - 390 Euro Baden-Württemberg Institution Rabate
- COSTS OF MICROCREDENTIALS ARE OFFSETABLE ON FUTURE CAS ADMISSION



04 – Q&A THE CAS!

- U Q ‘N’ I A!
- YOU CAN SHARE OWN EXPERIENCES & I LISTEN.
- WE CAN DISCUSS ANYTHING RELATED TO TODAY’S AGENDA.



Q and A yellow | [Libby Levi](#) | CC-BY-SA 2.0 | [flickr](#)



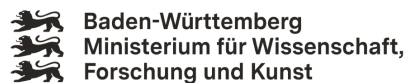
THANK YOU VERY MUCH!

MORE INFORMATION ON THE CAS FDM: WWW.WEITERBILDUNG-FDM.DE

CONTACT US: WEITERBILDUNGSANGEBOT-FDM@UNI-KONSTANZ.DE



GEFÖRDERT VOM:



bwFDM PROJEKTPARTNER:



UNIVERSITÄT
HEIDELBERG
ZUKUNFT
SEIT 1386

DURCHGEFÜHRT MIT:

