

plotXVG

User & Reference Manual

Version 1.1.1

Måns Rosenbaum and David van der Spoel

January 30, 2026

Contents

Preface	2
About plotXVG	2
User Manual	3
1 Installation of plotXVG	4
1.1 Prerequisites	4
1.2 Running the Installation	4
2 Using plotXVG	5
2.1 CLI	5
2.2 API	6
2.3 Creating Heatmaps	6
3 Additional Flags	8
4 Example Plots	14

List of Figures

1	This plot is created without flags. Default setting is to make a scatterplot.	14
2	Using lines	15
3	One file containing five datasets, without any flags added (will thus be plotted using markers).	15
4	User-defined lines	16
5	Both markers and linetypes combined in the same plot. Note how markers and lines can be used separately and combined	17
6	Moving the legendbox to the right. Can also be done along the y-axis.	17
7	Using the panels flag, along with -notitles. Also note -sharelabel, which removes axis labels except for the first column and the last row. Suitable if all subplots shares the same axis labels.	18

8	Panels that shows differently expressed data, such as two with lines and two with markers. Font- line- or marker-sizing are dynamic based on the number of subplot columns, but specified at will, by for example adding -mksize 20 -mkwidth 4 in a subplot of two columns.	19
9	A custom choice of colors. Colors defined by the user will be applied to the datasets in order. If there are more datasets than color inputs, default colors will be used.	20
10	Demonstrates the equal axes flag. This flag makes the plot square with equally large axes, suitable for correlation plots. Also note the possibility to plot panels side-by-side by adding side to the panels flag.	21
11	Demonstrates the square figure flag. This flag simply makes the saved figure square.	22
12	Shows statistics (RMSD, R^2). If R^2 is close to 1 more digits are added. Caution for strange plotting behaviours if the legend is too long or the font is large!	23
13	Plots the residual of the data, meaning x is subtracted from y for all data sets. Statistics are based on original train and test values and will not be affected by the residual flag.	24
14	Histogram with one dataset	25
15	Histogram with three datasets	25
16	A xvg file containing standard deviations is automatically incorporated as errorbars.	26
17	Change the font for all texts. Here it is changed to 'Tahoma'.	27
18	This demonstrates the dynamics of the program showing that multiple files can be plotted simultaneously with scaled font and marker sizes. Linestyles and markers can be specified for every dataset but can also be generated automatically typing only one input for ls and mk.	28
19	This shows the support for OpenMM csv files. -colx takes one argument while -coly can take multiple (Use strings).	29
20	Heatmap of two normal distributions with gibbs free energy calculated by plotxvg.	29
21	Showcasing the use of matplotlib's contourf and contour and calculation of PDF using kde.	30
22	The exact run for reproducing Fig.1 in the article.	31
23	The exact run for reproducing Fig.2 in the article.	32

24	The exact run for reproducing Fig.3 in the article.	32
25	The exact run for reproducing Fig.4 in the article.	33

Preface

This manual is a work in progress, describing the current functions and utilities of plotXVG version 1.1.1 and how to install and use this tool.

Command lines will be highlighted like `this` but can also be presented in this manner.

Enhancements, reports of issues and overall suggestions for improvements are very welcome, either by e-mail to mans.rosenbaum@icm.uu.se or on the GitHub at <https://github.com/AlexandriaChemistry/plotXVG/issues>.

We kindly request that you cite the paper about plotXVG if you use the tool for a publication of your own.

plotXVG can be downloaded as a free and open source software from <https://github.com/AlexandriaChemistry/plotXVG>.

About plotXVG

plotXVG is a command line tool based on the Matplotlib library as well as dependencies from the NumPy package meant to in part replace the Grace software to alleviate quick generations of plots from GROMACS generated xvg files, but supports csv files as well. It currently consists of 740 lines of Python code with an addition of testing of a test script.

Below follows the User Manual, an installation guide and practical usage of plotXVG including descriptions of all flags.

We hope this tool suits your needs!

User Manual

1 Installation of plotXVG

plotXVG is written in python and requires only a few dependencies to run.

1.1 Prerequisites

The following software packages are required for plotXVG to work:

1. Matplotlib version 3.7.0 or higher.
2. NumPy version 1.24.1 or higher.
3. Python, version 3.7 or higher.
4. Pip package manager, preferably of newest release.
5. (Optional) SciPy version 1.17.0 for doing kde calculations.
6. (Optional) XQuartz or similar for opening external windows while being on a remote server.

1.2 Running the Installation

Installation of plotXVG can be done in two ways, The first one is by cloning the git repository to your local computer by running

```
git clone https://github.com/AlexandriaChemistry/plotXVG
```

and then go in to that directory and, while being in your local environment, run the installation with pip:

```
python -m pip install .
```

Now you can use plotXVG! Another option is to simply type

```
python -m pip install plotxvg
```

and plotXVG will be fetched from PyPi and installed, simple as that. The benefit with cloning the repository from GitHub is the example runs are available to test the script. It is not a requirement.

2 Using plotXVG

plotXVG can be called both from the command line and as an integrated API for in-script analysis. CLI operated plotXVG can be useful for quick plotting of new output data files and opens an external window operated by matplotlib which lets the user interact with the plot. API operated plotXVG is suitable for analysis in, for example, a Jupyter notebook and can alleviate plotting of multiple files along with simpler programmatic control over styles, labels and more. Both are easily callable but with some small differences.

2.1 CLI

The general command for using plotXVG in the command line is:

```
plotxvg -f file(s) [-flags]
```

As apparent, there is only one required argument, namely an input file in .xvg or .csv format. This will produce a scatter plot from your input data. An external window will automatically be opened by matplotlib showing you an interactive plot from which you can save it by the supported buttons in the interactive window. Alternatively, plotXVG has a -save flag which saves the plot after the layout of the plot parts has been regulated. To clarify, the interactive matplotlib window might not show the actual finalized image. If no external window is wished to be opened, -noshow can be added to the command.

```
plotxvg -f file(s) -save output.pdf -noshow
```

In order to create for example a line plot, one additional argument -ls (short for linestyle) needs to be added along with a line style in order to tell plotXVG that lines rather than markers are desired.

```
plotxvg -f file(s) -ls solid
```

will create a line plot with a solid line. Supported line style are solid, dashed, dotdashed and dotted lines. The user can also by all means combine lines with markers by adding both flags:

```
plotxvg -f file(s) -ls dashed -mk +
```

which results in a dashed line with crosses on each data point.

2.2 API

To use plotXVG in a python script or a notebook you need first to import plotXVG as a library:

```
import plotxvg
```

Then simply call on the `plot()` function:

```
plotxvg.plot("file")
```

To add multiple files, put them in a list:

```
plotxvg.plot(["file1", "file2"])
```

Adding flags is done by naming the flag and assert the chosen values as strings in a list:

```
plotxvg.plot(['file1.xvg', 'file2.xvg'],  
             linestyle=['solid', 'dashed'],  
             panels=True,  
             save='plot.pdf')
```

Both long and short flag names are supported, just like in the CLI. Note that boolean flags do not need to be strings.

2.3 Creating Heatmaps

Creating heatmaps in order to study probability densities and create free energy landscapes is also supported by plotXVG. To create a heatmap from your data, use the heatmap mode by adding the `-heatmap` flag:

```
plotxvg -f file -heatmap
```

In the API, simply set the heatmap parameter to `True`:

```
plotxvg.plot("file.xvg", heatmap=True)
```

Calculating Gibbs free energy from the density data is done by adding the `-gibbs` flag. Gibbs free energy is calculated with the equation:

$$G = k_B T * \ln P / P_0 \quad (2.1)$$

where P_0 is the probability corresponding to the most populated bin, which by definition has $G = 0$, k_B is Boltzmann's constant and T is the absolute

temperature which can be specified with a `-temperature` flag. The input file can either contain two columns of raw data, or three columns of 2D data, with the third column being values to be mapped to the color scale. You can also create plots with contour lines instead using the flag `-contour`.

plotXVG also adds another feature `-kde` for estimating the probability density function namely the kernel density estimation (kde) using `stats.gaussian_kde` from the SciPy package. This can be beneficial if the data consist of very few data points. Adding the flag `-showdots` will additionally do a scatterplot on top of the density map.

Additional flags to expand the use of heatmap plotting are what colormap to prefer with `cmap` (default is *viridis*), the number of bins for the free energy calculations (default 50) and the number of levels in the contour parsed with the flag `-levels`. Default number of levels is 15. See example plots of using heatmap and contour with kde in Figures 20 and 21.

3 Additional Flags

Below all flags are given and a small description of each flag. This description can also be called by typing `plotxvg -h` in the command line.

- h, --help
show this help message and exit
- f [FILENAME ...], --filename [FILENAME ...]
Filename(s) to read and plot
- follow, --follow
Continuously update the plot by re-reading the input file(s)
- debug, --debug
Turn on printing of debugging messages
- font FONTNAME, --fontname FONTNAME
Font for all text.
- alfs AXISLABELFONTSIZE, --axislabelfontsize AXISLABELFONTSIZE
Axis label font size, default 26
- tfs TITLEFONTSIZE, --titlefontsize TITLEFONTSIZE
Title font size, set to zero for no title, default 30
- lfs LEGENDFONTSIZE, --legendfontsize LEGENDFONTSIZE
Legend font size, set to zero for no legend, default 26
- tickfs TICKFONTSIZE, --tickfontsize TICKFONTSIZE
Tick font size, default 24
- ls LINSTYLE [LINESTYLE ...], --linestyle LINSTYLE [LINESTYLE ...]
What kind of line style:

solid, dashed, dashdot, dotted

-mk MARKER [MARKER ...], --marker MARKER [MARKER ...]
 Use markers for data sets: o, +, x, <, >...

-mksize MARKERSIZE, --markersize MARKERSIZE
 Size of filled markers for data sets, default 10

-mkwidth MARKEREDGEWIDTH, --markeredgewidth MARKEREDGEWIDTH
 Size of character markers (e.g. +) for data sets,
 default 2

-colors [COLORS ...], --colors [COLORS ...]
 Colors for the plots. Colors defined by the user
 will be applied to the datasets in order. If there
 are more datasets than color inputs, default colors
 will be used.

-save SAVE, --save SAVE
 Save plot. Please specify saving location and
 preferred filetype (.pdf, .png...)

-sqfig, --squarefig
 Make the figure square

-eqax, --equalaxes
 Make the plot square with equally large axes

-bar, --bar
 Make a bar graph

-noshow, --noshow
 Do not show the figure

-res, --residual
 Subtract x from y for all data sets - useful
 for correlation plots

-fl, --filelabel
 Add the filename to the labels in the plot
 (may yield long labels)

-logy, --logy
 Use a log scale on the Y-axis

-xmin XMIN, --xmin XMIN
 Minimum value of X-axis. Default = defined by data.

-xmax XMAX, --xmax XMAX
 Maximum value of X-axis. Default = defined by data.

-ymin YMIN, --ymin YMIN
 Minimum value of Y-axis. Default = defined by data.

-ymax YMAX, --ymax YMAX
 Maximum value of Y-axis. Default = defined by data.

-xframe XFRAME, --xframe XFRAME
 Width of the plot 100 pixels, default 16

-yframe YFRAME, --yframe YFRAME
 Height of the plot 100 pixels, default 9

-panels [top,side], --panels [top,side]
 Generate different panels to plot in, one file per
 panel. Add 'side' for side-by side panels.

-sfx SUBFIGUREX, --subfigureX SUBFIGUREX
 X position of subfigure label when using panels.
 Default -0.15

-sfy SUBFIGUREY, --subfigureY SUBFIGUREY
 Y position of subfigure label when using panels.
 Default 1.0

-ign [IGNORE ...], --ignore [IGNORE ...]

legends of the series to ignore. Please specify the whole legend label.

- title TITLE [TITLE ...], --title TITLE [TITLE ...]
User-defined title(s). This flag overwrites pre-defined titles. If the user wants to use user-defined titles and pre-defined titles on different panels, use None as placeholders for pre-defined title panels. If the user wants to remove a specific panel title, put an empty string ''.
- notitles, --notitles
Remove all titles (Both user-defined and title pre-defined by data.)
- dslegends [DATASETLEGENDS ...],
--datasetlegends [DATASETLEGENDS ...]
Set user-defined legends. If legends are already defined in the input file they are combined for each dataset
i.e. '<user-defined legend> <pre-defined legend>'.
- sharelabel, --sharelabel
Show only the x-labels on the last row of plots and the y-labels on the first column of plots (useful if all subplots share the same x- and y-labels)
- legend_x LEGEND_X, --legend_x LEGEND_X
Put the legend box horizontally on this position, default 0.02
- legend_y LEGEND_Y, --legend_y LEGEND_Y
Put the legend box vertically on this position, default 0.98
- stats, --stats
Print RMSD and R2 values of datasets

(x-axis is reference data and y-axis holds the predicted values)

-csvx CSVX, --csvx CSVX

Choose what x column you would like from a csv file.
Choose only one column. Default is column 1

-csvy CSVY [CSVY ...], --csvy CSVY [CSVY ...]

Choose what y column(s) you would like from a csv file.
Default is column 3

-v, --version show program's version number and exit

-heatmap, --heatmap 2D heatmap plot

-contour, --contour Contour 2D plot

-cmap COLORMAP, --colormap COLORMAP
Matplotlib colormap

-levels LEVELS, --levels LEVELS
Number of contour levels

-bins, --bins BINS Number of bins for 2D histogram

-gibbs, --gibbs Calculates Gibbs free energy from
probability density

-temp, --temperature TEMPERATURE
At what temperature in Kelvin to calculate
Gibbs free energy according to $G = kBT - \log(P)$.

-kde, --kde Calculate probability density using
kernel density estimation (kde).
Preferably combined with contour rather
than heatmap. OBS! You need the scipy
package for this function.

`-showdots, --showdots`

Choose to show the scattered dots together with kde.

4 Example Plots

This section aims to give an easier understanding of how one can use plotXVG, using examples given by the test.py script found in the plotXVG GitHub repository. For each plot is also the exact plotXVG command for easy reproducibility. In order to run these successfully, you need to be in the tests directory. We hope this can further show the scope of plotXVG's abilities.

Command for Fig. 1:

```
plotxvg -f gmx_files/rmsd_calpha.xvg -save \
  plotxvg_tests-output/00default.pdf -noshow
```

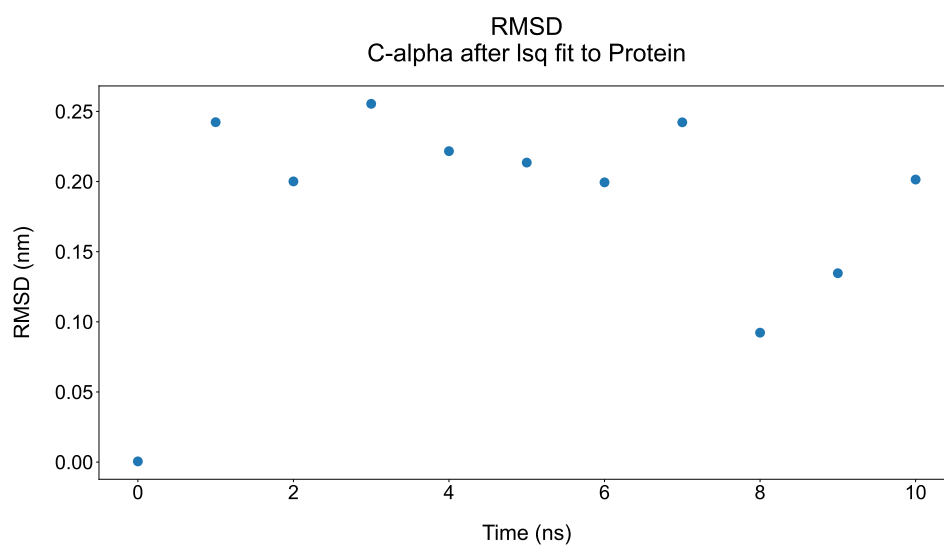


Figure 1: This plot is created without flags. Default setting is to make a scatterplot.

Command for Fig. 2:

```
plotxvg -f gmx_files/potential_energy.xvg -ls solid -save \
  plotxvg_tests-output/01only_lines.pdf -noshow
```

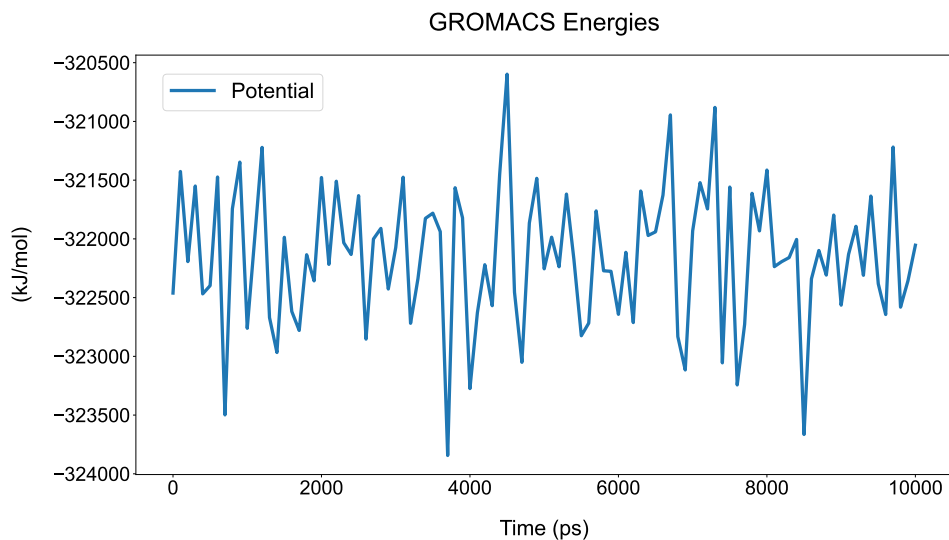


Figure 2: Using lines

Command for Fig. 3:

```
plotxvg -f other_files/ammonium#chloride.xvg -save \
plotxvg_tests-output/02markers_5datasets.pdf -noshow
```

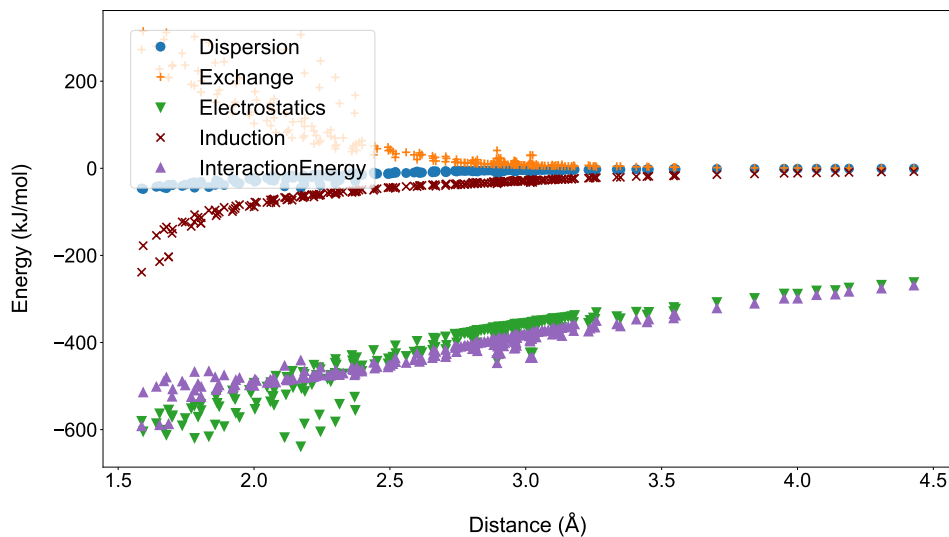


Figure 3: One file containing five datasets, without any flags added (will thus be plotted using markers).

Command for Fig. 4:

```

plotxvg -f gmx_files/gyrate.xvg -ls dotted solid dashed \
dashdot -save plotxvg_tests-output/03lines_4datasets.pdf \
-noshow

```

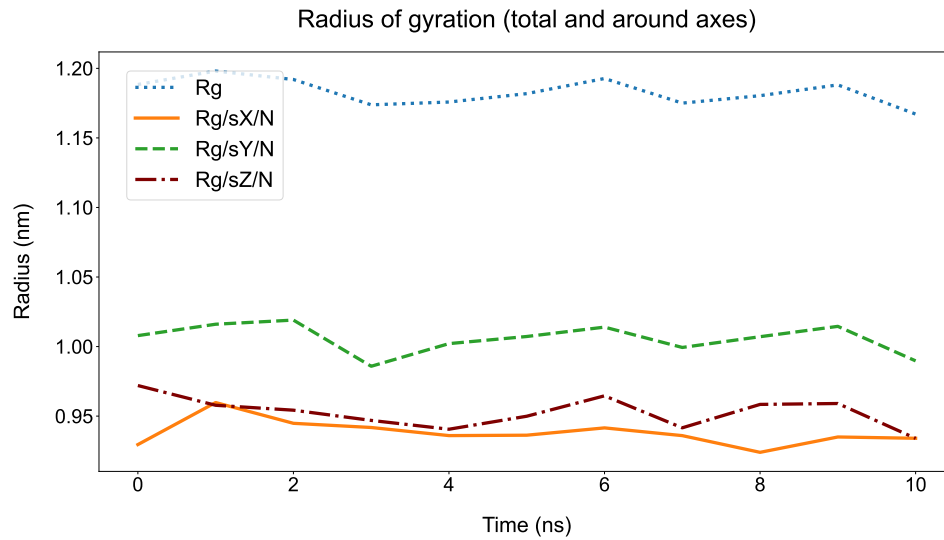


Figure 4: User-defined lines

Command for Fig. 5:

```

plotxvg -f other_files/ammonium#chloride.xvg -ls solid \
dashed solid None None -mk None None x + . -save \
plotxvg_tests-output/04mk_and_ls.pdf -noshow

```

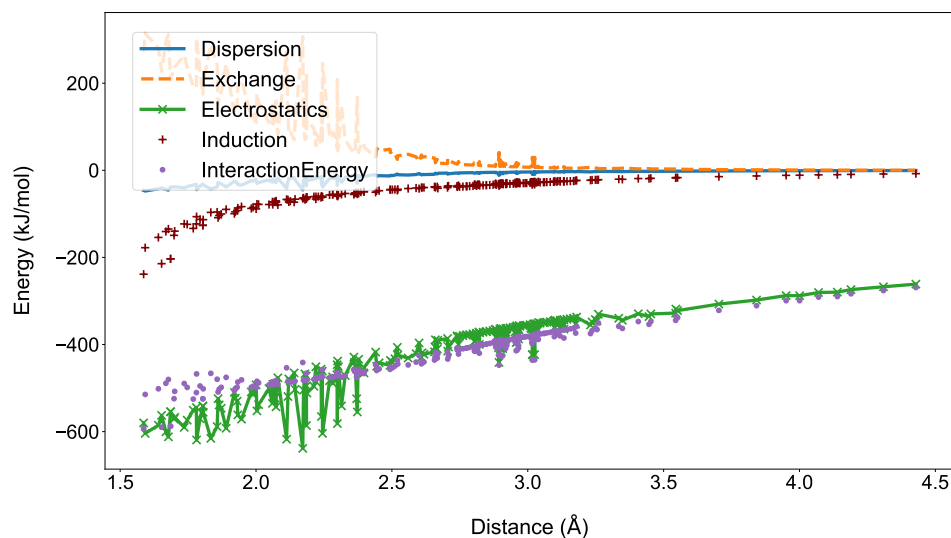


Figure 5: Both markers and linetypes combined in the same plot. Note how markers and lines can be used separately and combined

Command for Fig. 6:

```
plotxvg -f other_files/ammonium#chloride.xvg -legend_x 0.68 \
  -save plotxvg_tests-output/05move_legendbox.pdf -noshow
```

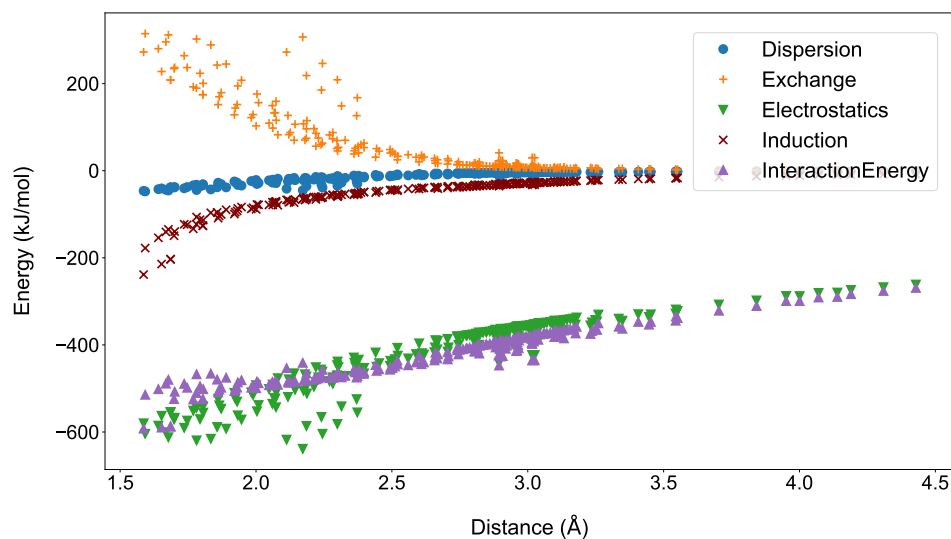


Figure 6: Moving the legendbox to the right. Can also be done along the y-axis.

Command for Fig. 7:

```
plotxvg -f gmx_files/rmsd_calpha.xvg \
  gmx_files/rmsd_sidechain.xvg -panels -sharelabel -notitles \
  -ls solid -save plotxvg_tests-output/06two_panels.pdf \
  -noshow
```

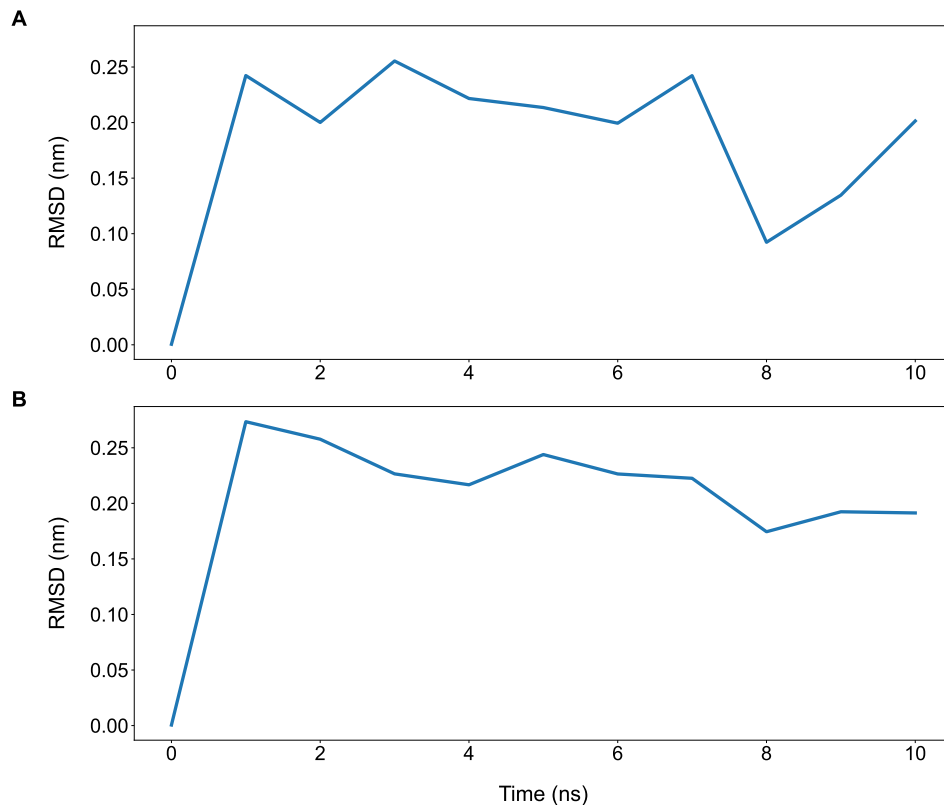


Figure 7: Using the panels flag, along with -notitles. Also note -sharelabel, which removes axis labels except for the first column and the last row. Suitable if all subplots shares the same axis labels.

Command for Fig. 8:

```
plotxvg -f gmx_files/rmsd_calpha.xvg \
  gmx_files/temp_press.xvg gmx_files/gyrate.xvg \
  gmx_files/potential_energy.xvg -ls solid solid solid solid \
  dotted dashdot dashed solid -mk None None None o + x ^ None \
  -panels -tfs 40 -axfs 35 -mksize 20 -mkwidth 4 -save \
  plotxvg_tests-output/07mult_panels.pdf -noshow
```

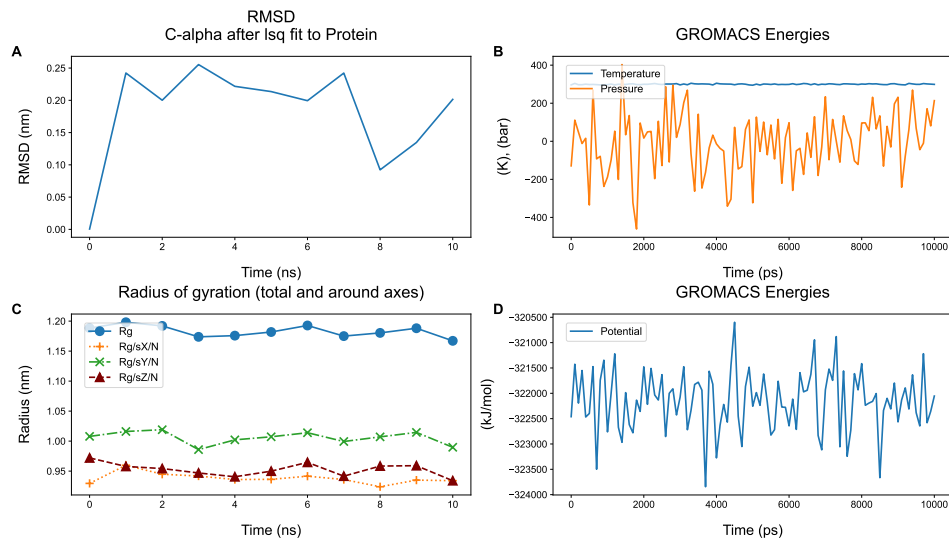


Figure 8: Panels that shows differently expressed data, such as two with lines and two with markers. Font- line- or marker-sizing are dynamic based on the number of subplot columns, but specified at will, by for example adding -mksize 20 -mkwidth 4 in a subplot of two columns.

Command for Fig. 9:

```
plotxvg -f gmx_files/intra_energies.xvg -colors green purple \
red -save plotxvg_tests-output/08colors.pdf -noshow
```

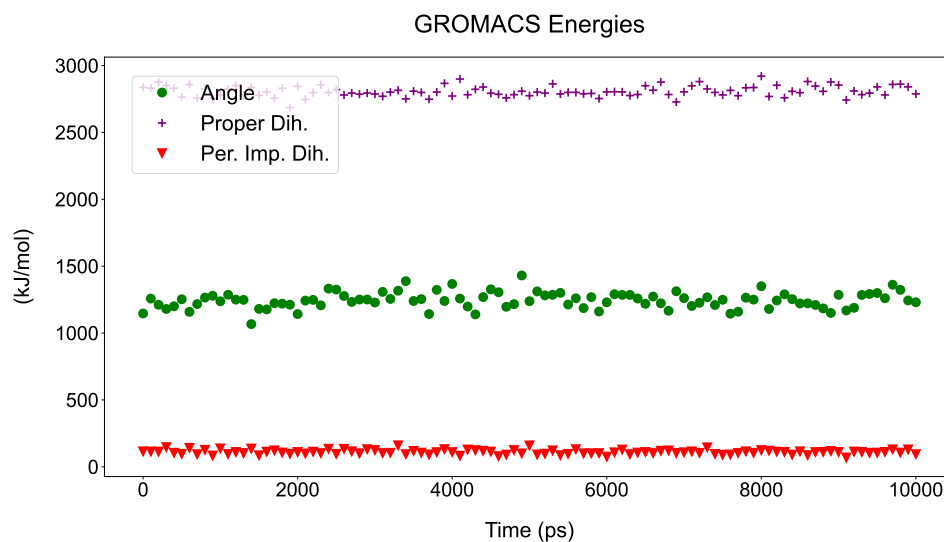


Figure 9: A custom choice of colors. Colors defined by the user will be applied to the datasets in order. If there are more datasets than color inputs, default colors will be used.

Command for Fig. 10:

```
plotxvg -f act_files/COULOMB-PC-elec.xvg \
  act_files/COULOMB-PC+GS-elec.xvg -dslegends 'PC-elec' \
  'PC+GS-elec' -eqax -sharelabel -panels side -save \
  plotxvg_tests-output/09equalaxes.pdf -noshow
```

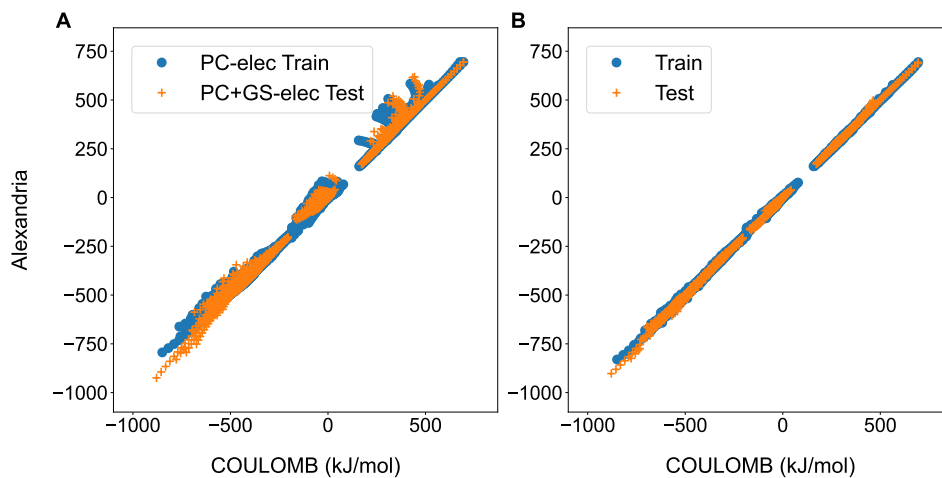


Figure 10: Demonstrates the equal axes flag. This flag makes the plot square with equally large axes, suitable for correlation plots. Also note the possibility to plot panels side-by-side by adding side to the panels flag.

Command for Fig. 11:

```
plotxvg -f gmx_files/rmsd_calpha.xvg \
  gmx_files/temp_press.xvg gmx_files/gyrate.xvg \
  gmx_files/potential_energy.xvg -ls solid solid solid solid \
  dotted dashdot dashed solid -mk None None None o + x ^ None \
  -panels -mksize 20 -mkwidth 4 -sqfig -save \
  plotxvg_tests-output/10squarefig.pdf -noshow
```

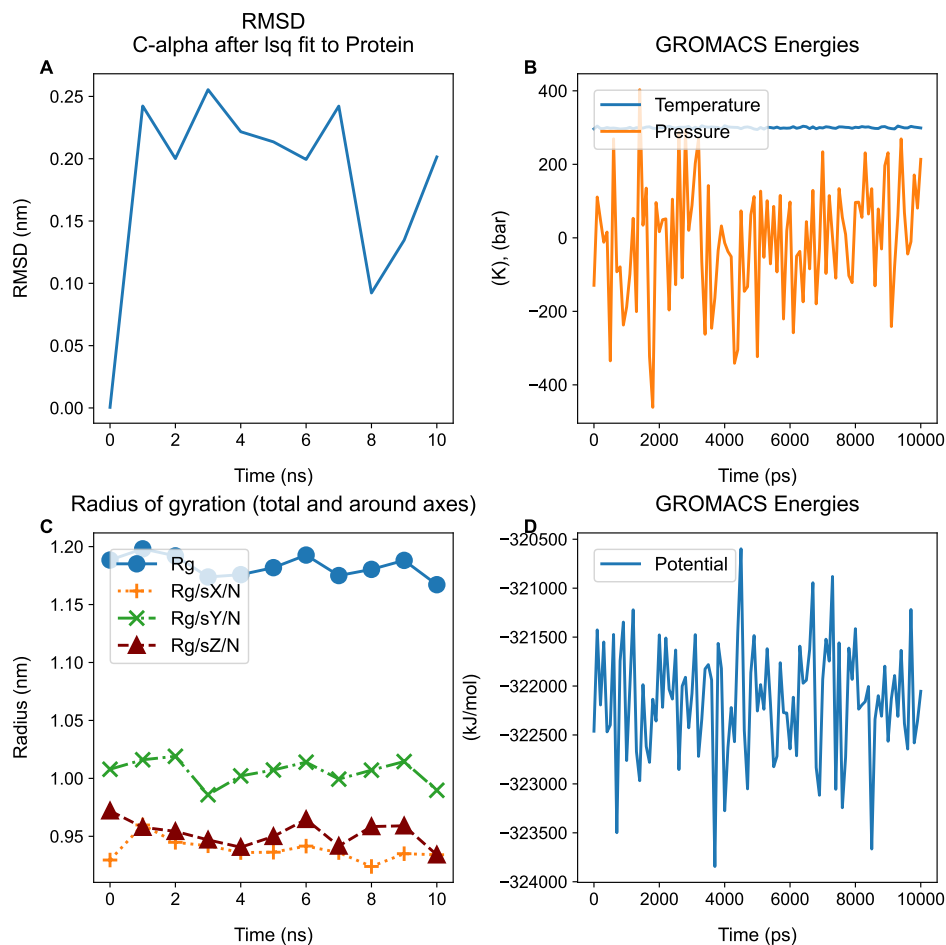



Figure 11: Demonstrates the square figure flag. This flag simply makes the saved figure square.

Command for Fig. 12:

```
plotxvg -f act_files/COULOMB-PC-elec.xvg \
  act_files/COULOMB-PC-allelec.xvg \
  act_files/COULOMB-PC+GS-elec.xvg \
  act_files/COULOMB-PC+GS-allelec.xvg -dslegends PC-elec \
  PC-allelec PC+GS-elec PC+GS-allelec -axfs 38 -lfs 19 -panels \
  -sharelabel -sqfig -stats -save \
  plotxvg_tests-output/11stats.pdf -noshow
```

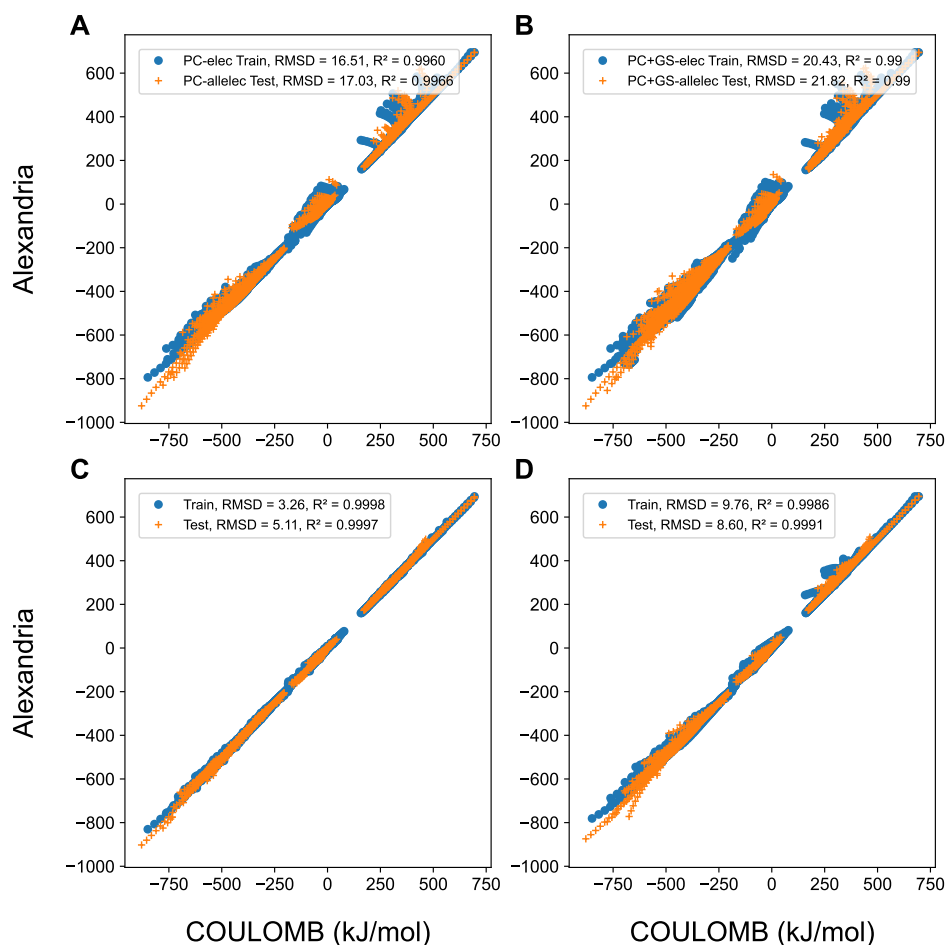


Figure 12: Shows statistics (RMSD, R^2). If R^2 is close to 1 more digits are added. Caution for strange plotting behaviours if the legend is too long or the font is large!

Command for Fig. 13:

```
plotxvg -f act_files/COULOMB-PC-elec.xvg \
  act_files/COULOMB-PC-allelelec.xvg \
  act_files/COULOMB-PC+GS-elec.xvg \
  act_files/COULOMB-PC+GS-allelelec.xvg -dslegends PC-elec \
  PC-allelelec PC+GS-elec PC+GS-allelelec -axfs 38 -lfs 19 -panels \
  -sharelabel -sqfig -stats -res -save \
  plotxvg_tests-output/12res.pdf -noshow
```

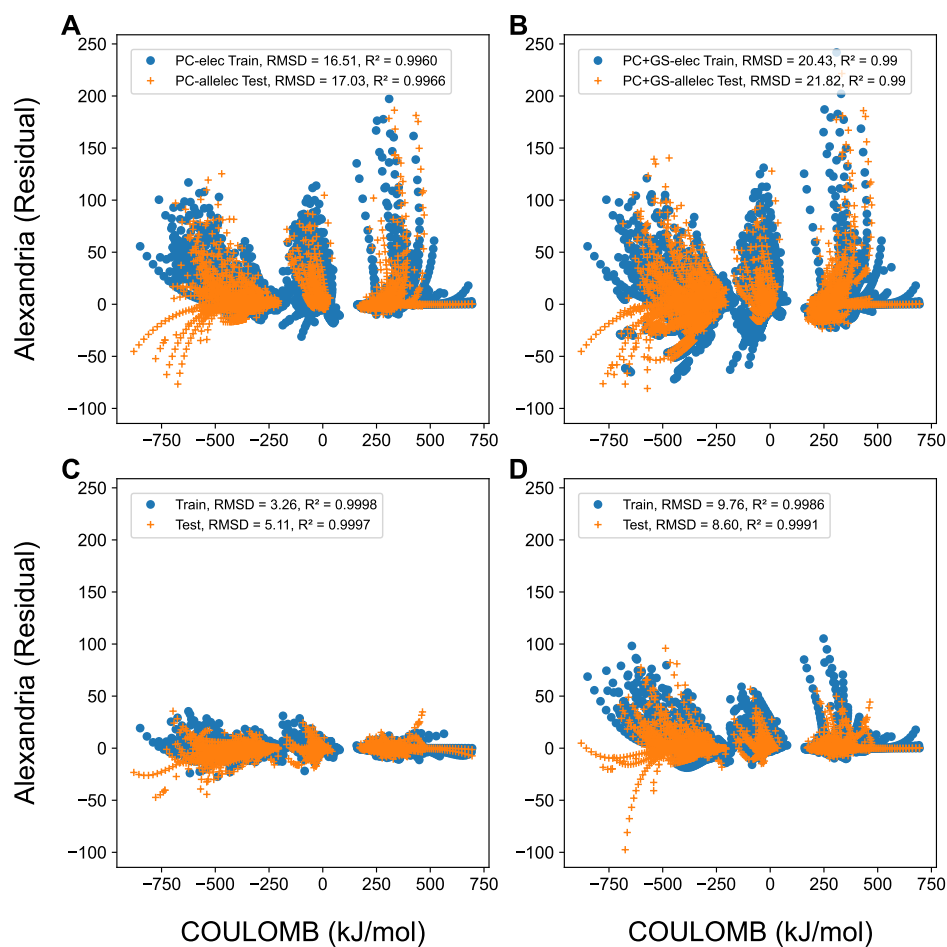


Figure 13: Plots the residual of the data, meaning x is subtracted from y for all data sets. Statistics are based on original train and test values and will not be affected by the residual flag.

Command for Fig. 14:

```
plotxvg -f gmx_files/rmsf_residues.xvg -bar -save \
  plotxvg_tests-output/13bar.pdf -noshow
```

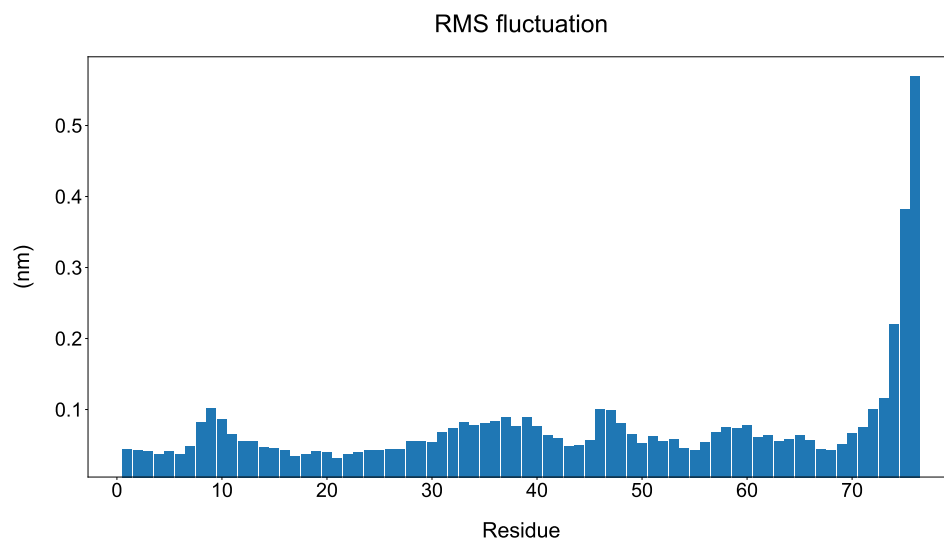


Figure 14: Histogram with one dataset

Command for Fig. 15:

```
plotxvg -f other_files/rmsf_res_66-76.xvg \
  other_files/rmsf_res_66-76x1.2.xvg \
  other_files/rmsf_res_66-76x0.8.xvg -bar -save \
  plotxvg_tests-output/14threebars.pdf -noshow
```

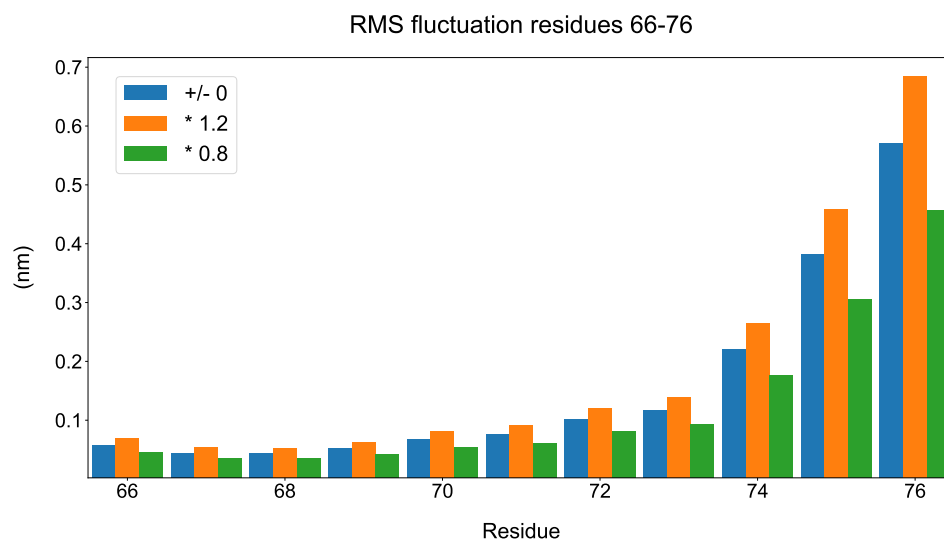


Figure 15: Histogram with three datasets

Command for Fig. 16:

```
plotxvg -f gmx_files/resarea.xvg -ls dotted -mk o -save \
  plotxvg_tests-output/15std_plot.pdf -noshow
```

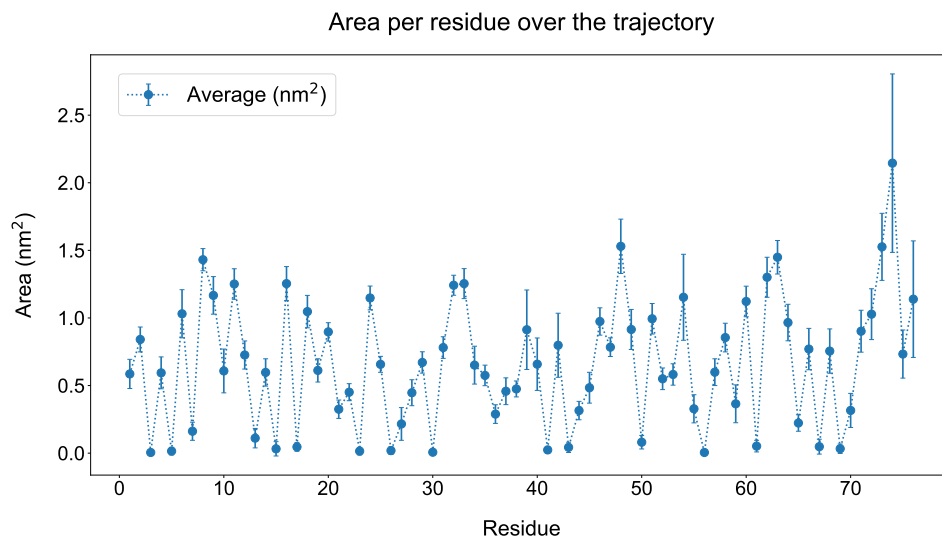


Figure 16: A xvg file containing standard deviations is automatically incorporated as errorbars.

Command for Fig. 17:

```
plotxvg -f gmx_files/rmsd_backbone.xvg -font Tahoma -save \
  plotxvg_tests-output/16font.pdf -noshow
```

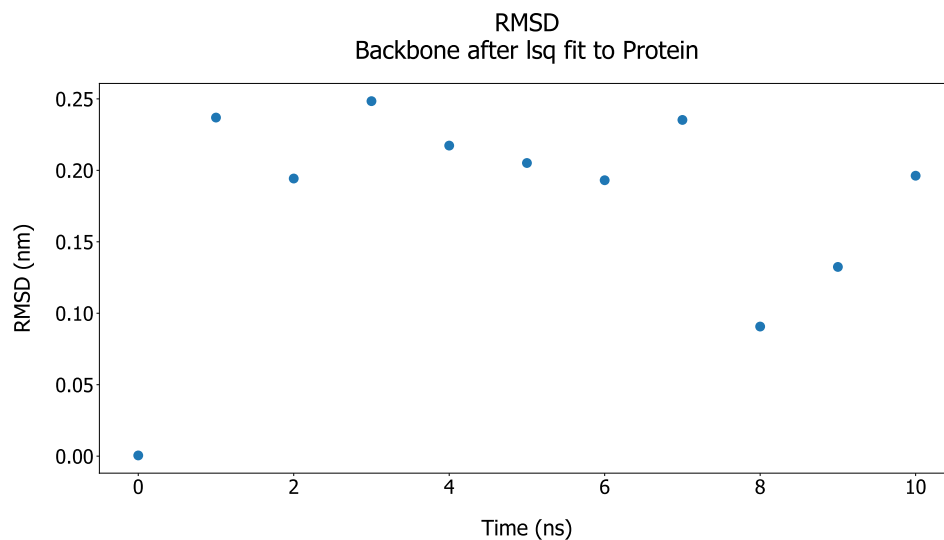


Figure 17: Change the font for all texts. Here it is changed to 'Tahoma'.

Command for Fig. 18:

```
plotxvg -f gmx_files/eigenval.xvg gmx_files/gyrate.xvg \
  gmx_files/potential_energy.xvg gmx_files/resarea.xvg \
  gmx_files/rmsd_backbone.xvg gmx_files/rmsd_sidechain.xvg \
  gmx_files/rmsf_residues.xvg gmx_files/sasa_total.xvg \
  gmx_files/intra_energies.xvg -mk o -ls solid -panels -save \
  plotxvg_tests-output/17Alot_of_panels.pdf -noshow
```

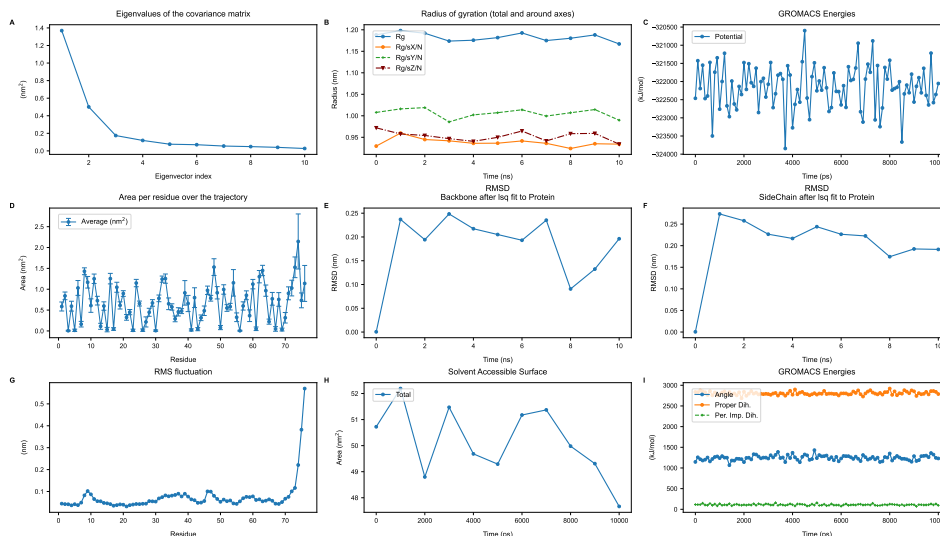


Figure 18: This demonstrates the dynamics of the program showing that multiple files can be plotted simultaneously with scaled font and marker sizes. Linestyles and markers can be specified for every dataset but can also be generated automatically typing only one input for ls and mk.

Command for Fig. 19:

```
plotxvg -f other_files/openmm.csv -colx 2 -coly 7 -ls solid \
-sav plotxvg_tests-output/18openMMfile.pdf -noshow
```

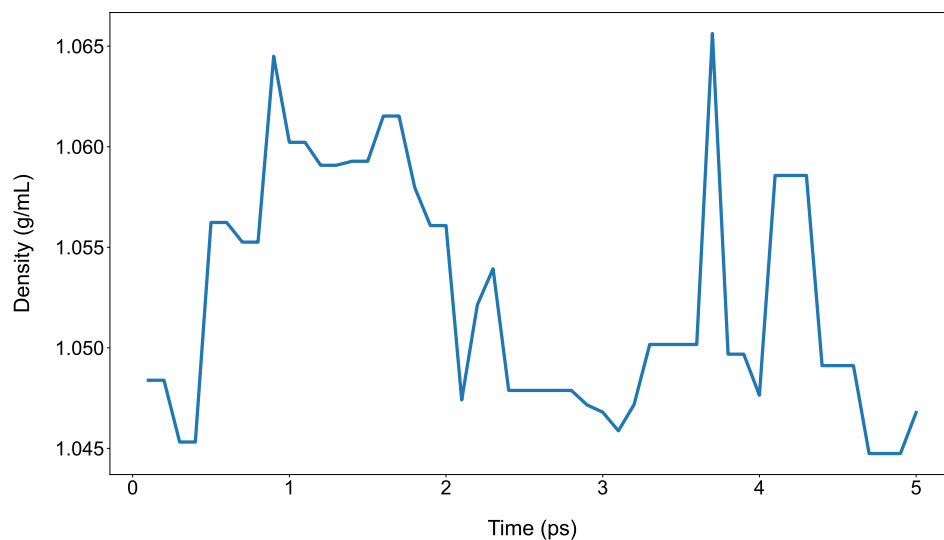


Figure 19: This shows the support for OpenMM csv files. -colx takes one argument while -coly can take multiple (Use strings).

Command for Fig. 20:

```
plotxvg -f other_files/test_normaldist.xvg -heatmap -gibbs \
  -cmap inferno -save plotxvg_tests-output/19heatmap.pdf \
  -noshow
```

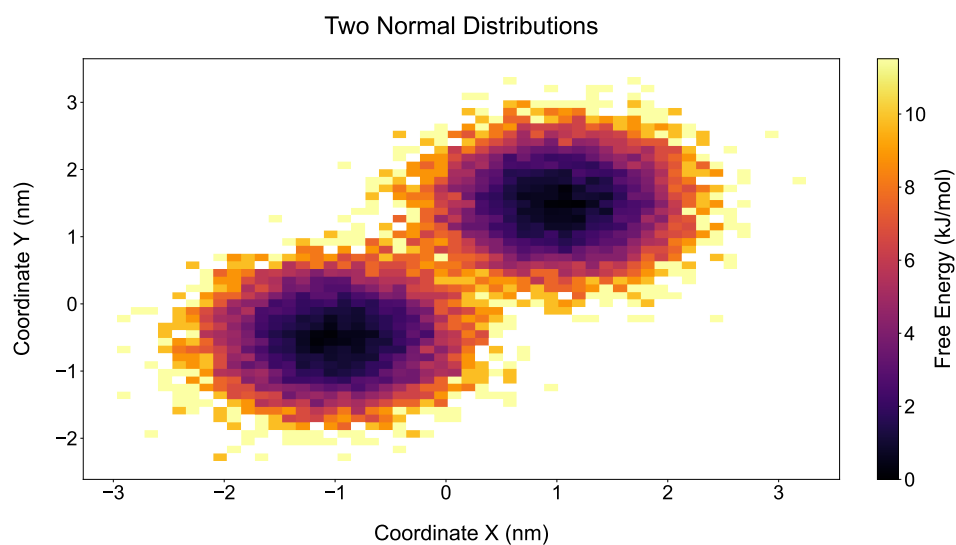


Figure 20: Heatmap of two normal distributions with gibbs free energy calculated by plotxvg.

Command for Fig. 21:

```
plotxvg -f gmx_files/2dproj_PC1_PC2.xvg -contour -kde \  
-showdots -save plotxvg_tests-output/20contour_kde.pdf \  
-noshow
```

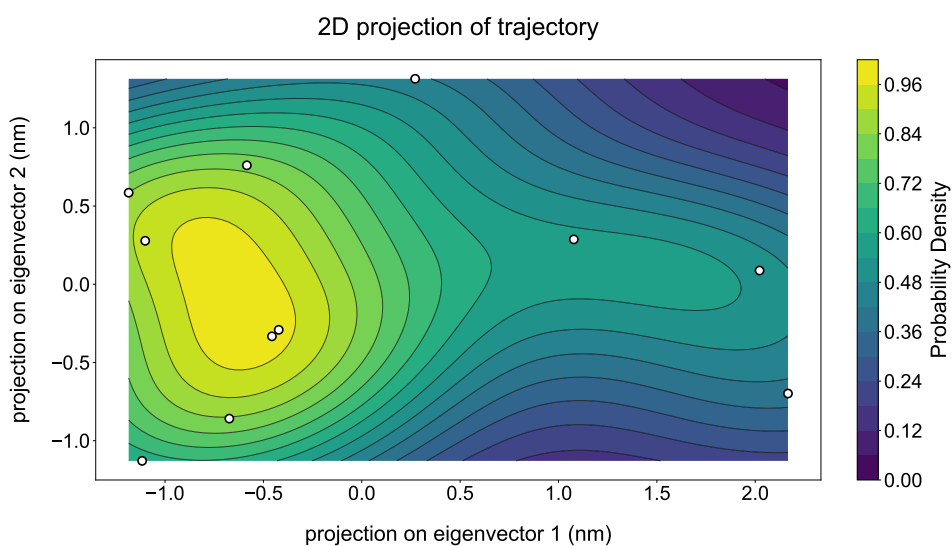


Figure 21: Showcasing the use of matplotlib's `contourf` and `contour` and calculation of PDF using `kde`.

Command for Fig. 22:

```
plotxvg -f gmx_files/rmsd_calpha.xvg \  
gmx_files/temp_press.xvg --linestyle solid None solid \  
--marker None . o -panels top --allfontsizes 6 -save \  
plotxvg_tests-output/21fig1_article.pdf -noshow
```

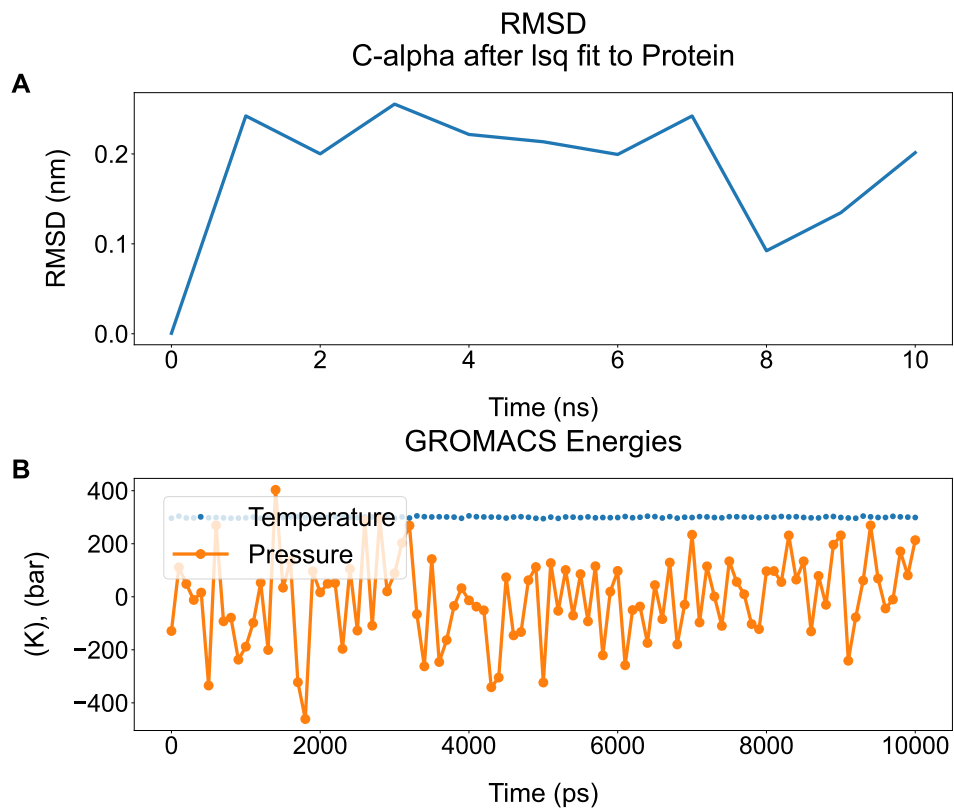


Figure 22: The exact run for reproducing Fig.1 in the article.

Command for Fig. 23:

```
plotxvg -f act_files/COULOMB-PC-elec.xvg \
  act_files/COULOMB-PC+GS-elec.xvg -dslegends 'PC-elec' \
  'PC-elec' 'PC+GS-elec' 'PC+GS-elec' --legendfontsize 18 \
  --equalaxes -panels side -sharelabel -stats -save \
  plotxvg_tests-output/22fig2_article.pdf -noshow
```

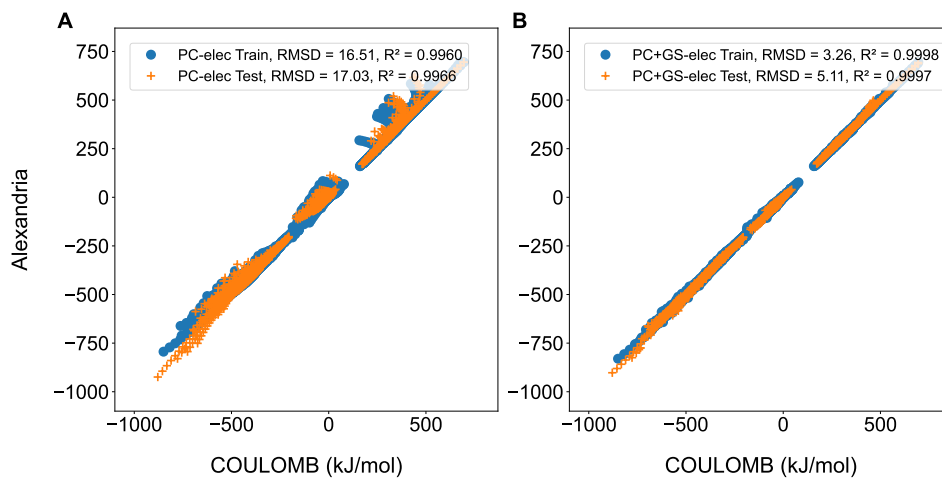


Figure 23: The exact run for reproducing Fig.2 in the article.

Command for Fig. 24:

```
plotxvg -f other_files/SL_posteriors.dat -heatmap -cmap \
rainbow --allfontsizes 12 -save \
plotxvg_tests-output/23fig3_article.pdf -noshow
```

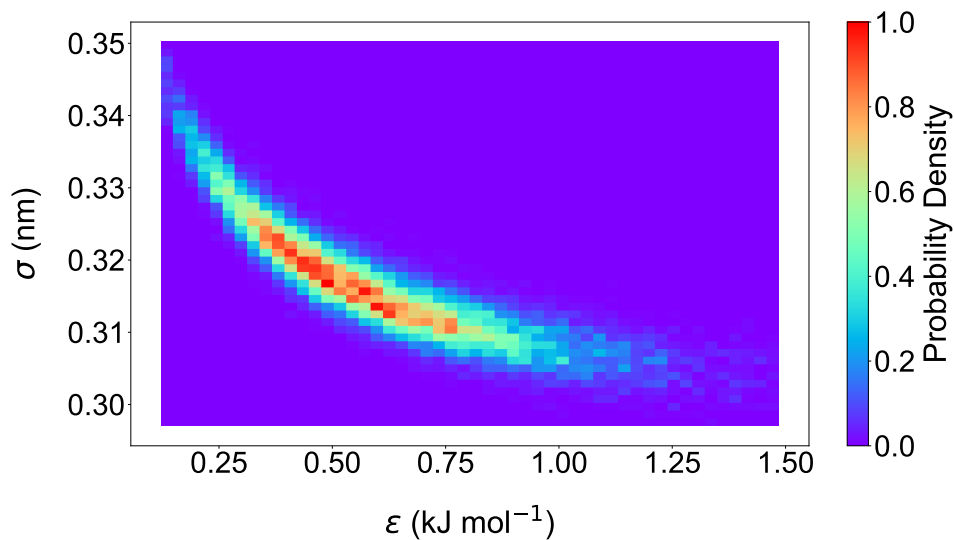


Figure 24: The exact run for reproducing Fig.3 in the article.

Command for Fig. 25:

```
plotxvg -f gmx_files/2dproj_PC1_PC2.xvg -contour -kde -gibbs \
```

```
-showdots --allfontsizes 12 -save \
plotxvg_tests-output/24fig4_article.pdf -noshow
```

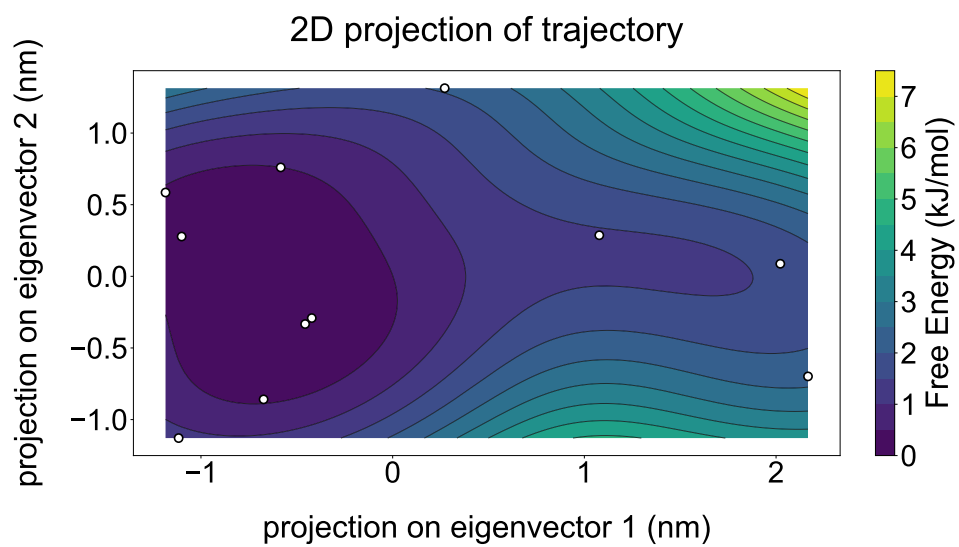


Figure 25: The exact run for reproducing Fig.4 in the article.