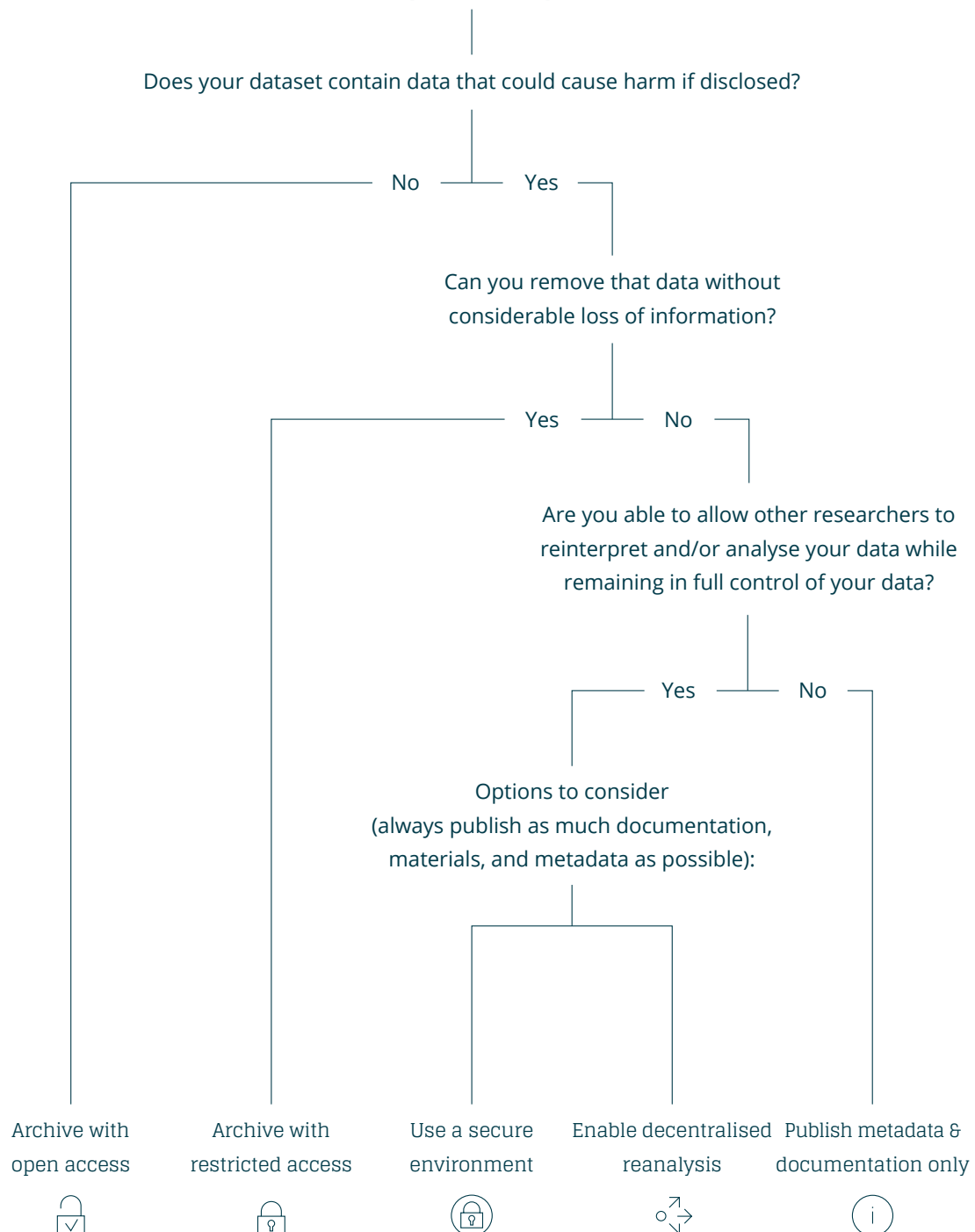


# Qualitative data reuse decision tree

As open as possible, as closed as necessary

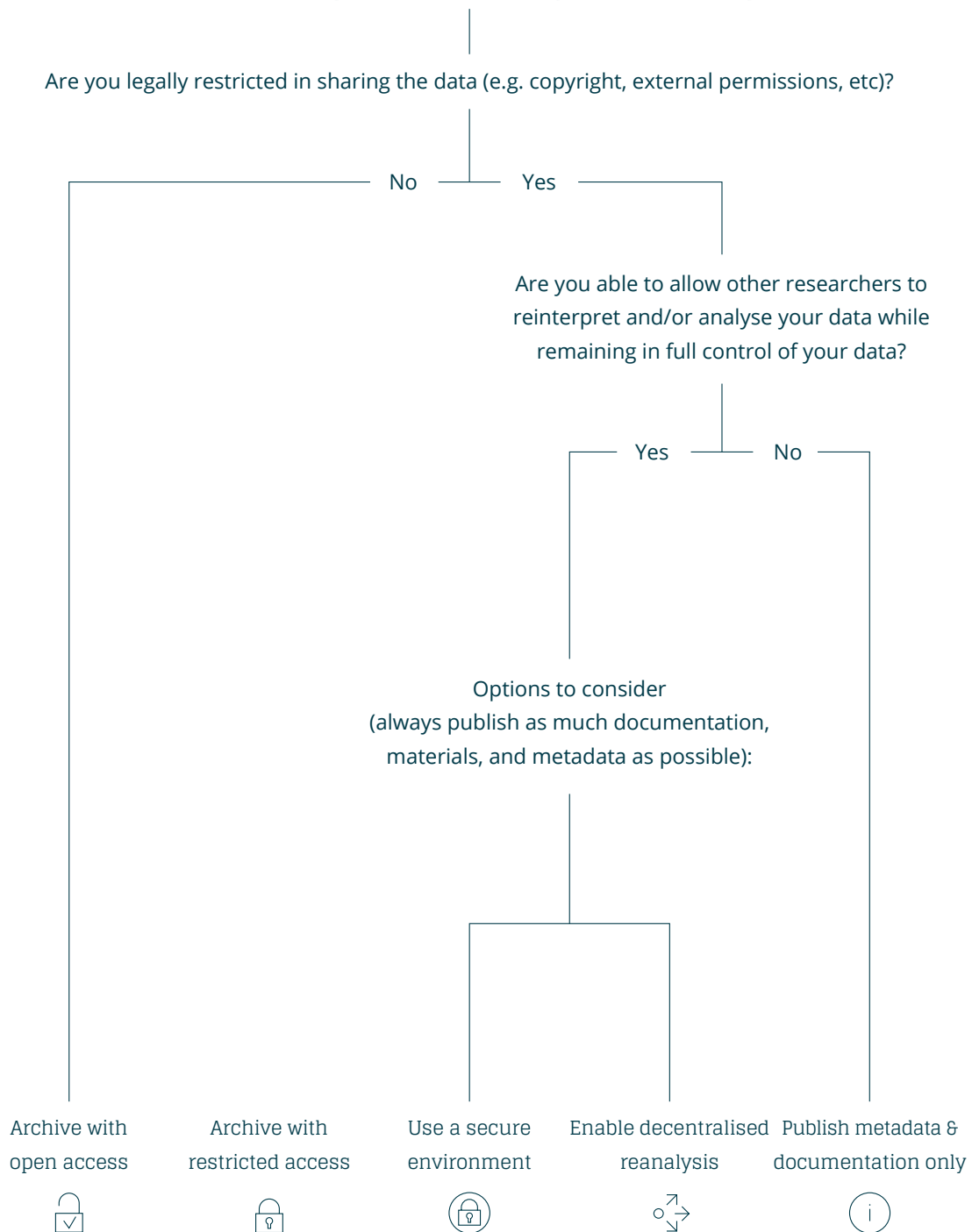
## A. Mitigating risks



# Qualitative data reuse decision tree

As open as possible, as closed as necessary

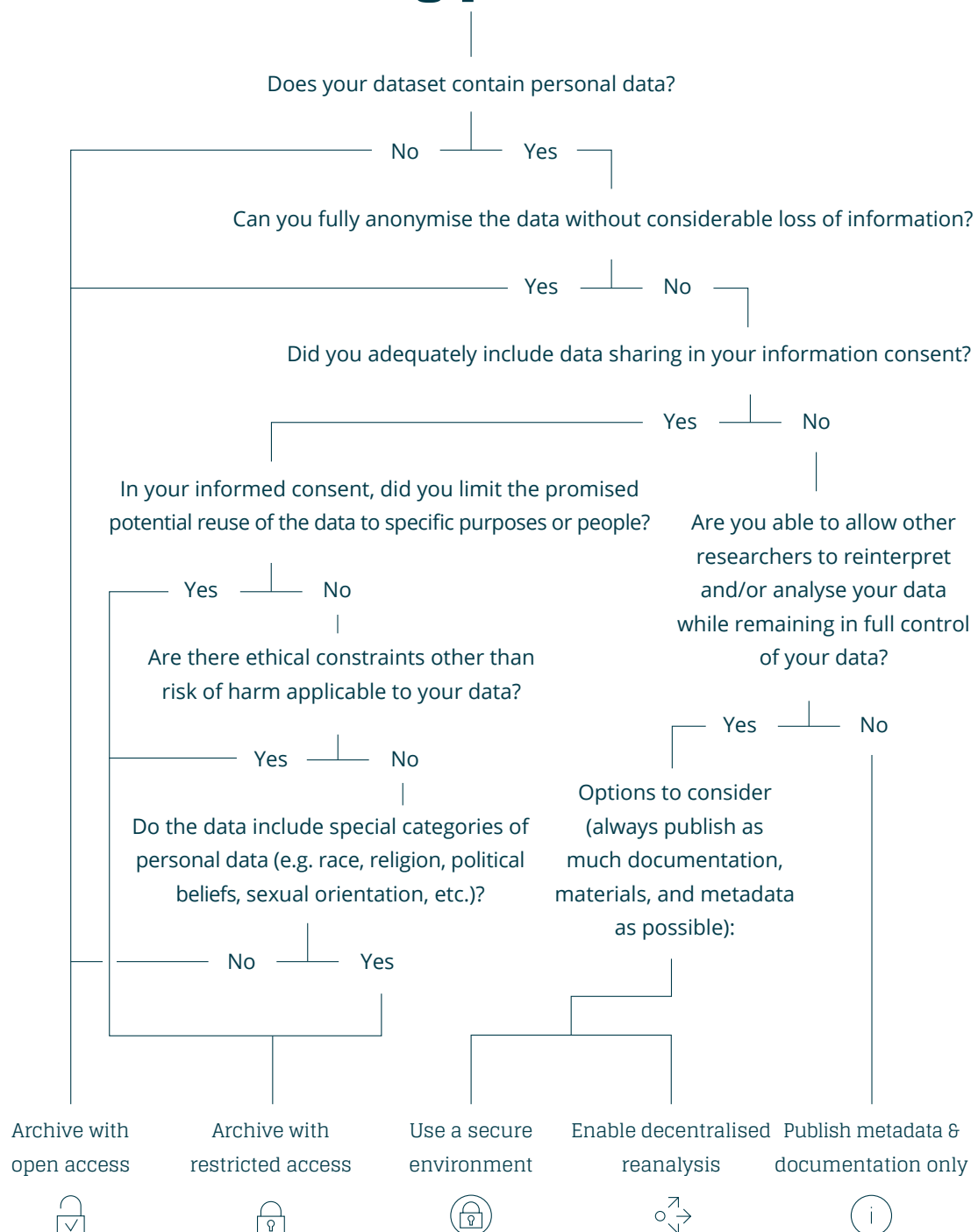
## B. Complying with legal obligations



# Qualitative data reuse decision tree

As open as possible, as closed as necessary

## C. Protecting personal data



# Qualitative data reuse decision tree

As open as possible, as closed as necessary



## Archive Open Access

Your data are not sensitive, there are no legal or ethical restrictions to share the data, and if your dataset contains personal data, you have informed consent that allows the open sharing of data, or the personal data can be anonymised adequately.

Consider archiving your data open access in a trustworthy digital repository like the DANS Data Station Social Sciences and Humanities (SSH). CC0 license is recommended. Include metadata and documentation to improve the reusability.



## Archive Restricted Access

There are legal or ethical reasons to limit the accessibility of the data to restricted access, or your data contains personal information that you are not allowed to share open access, but your informed consent allows data sharing with specific conditions.

Consider archiving your data in a trustworthy digital repository that allows restricted access, like the DANS Data Station SSH. Include metadata and documentation to improve the reusability and establish a Data Access Protocol to accept or reject requests.



## Secure environment

There are legal or ethical reasons the data needs extra protection; your data are sensitive and/or contains personal data and you don't have informed consent to share it openly.

Consider using a secure environment where the data remains under your control. Publish project documentation and metadata about your data to make it findable.



## Enable decentralised reanalysis

There are legal or ethical reasons the data cannot be shared with others; your data are sensitive and/or contains personal data and you don't have informed consent to share it.

Consider offering your data for decentralised reanalysis, where you reanalyse your data based on analysis protocols from other researchers. Publish project documentation and metadata about your data to make it findable.



## Publish metadata only

There are legal or ethical reasons the data cannot be shared with others; your data are sensitive and/or contains personal data and you don't have informed consent to share it.

Secure environments or decentralised reanalysis are not possible for you. Publish project documentation and metadata about your project to make it findable.