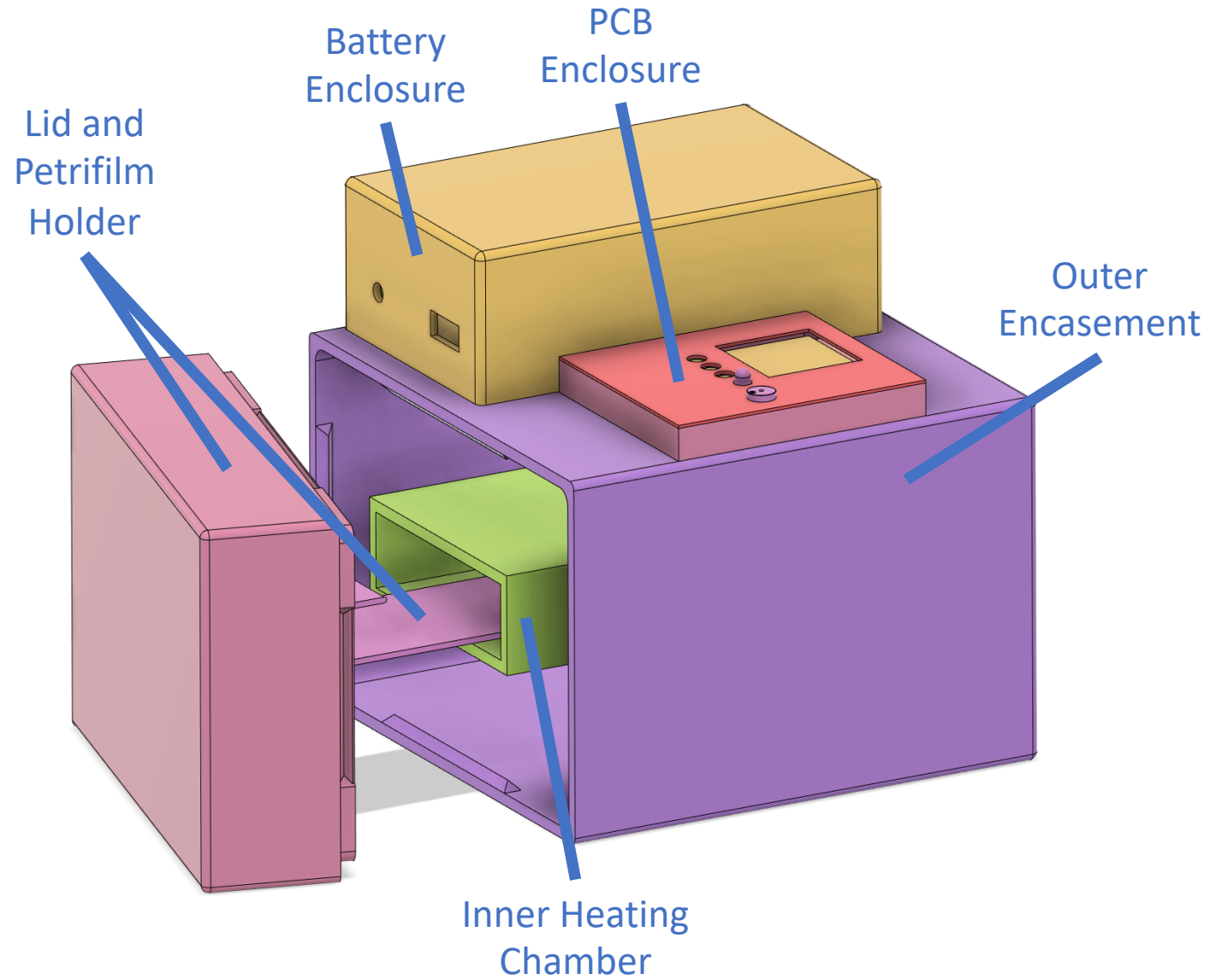
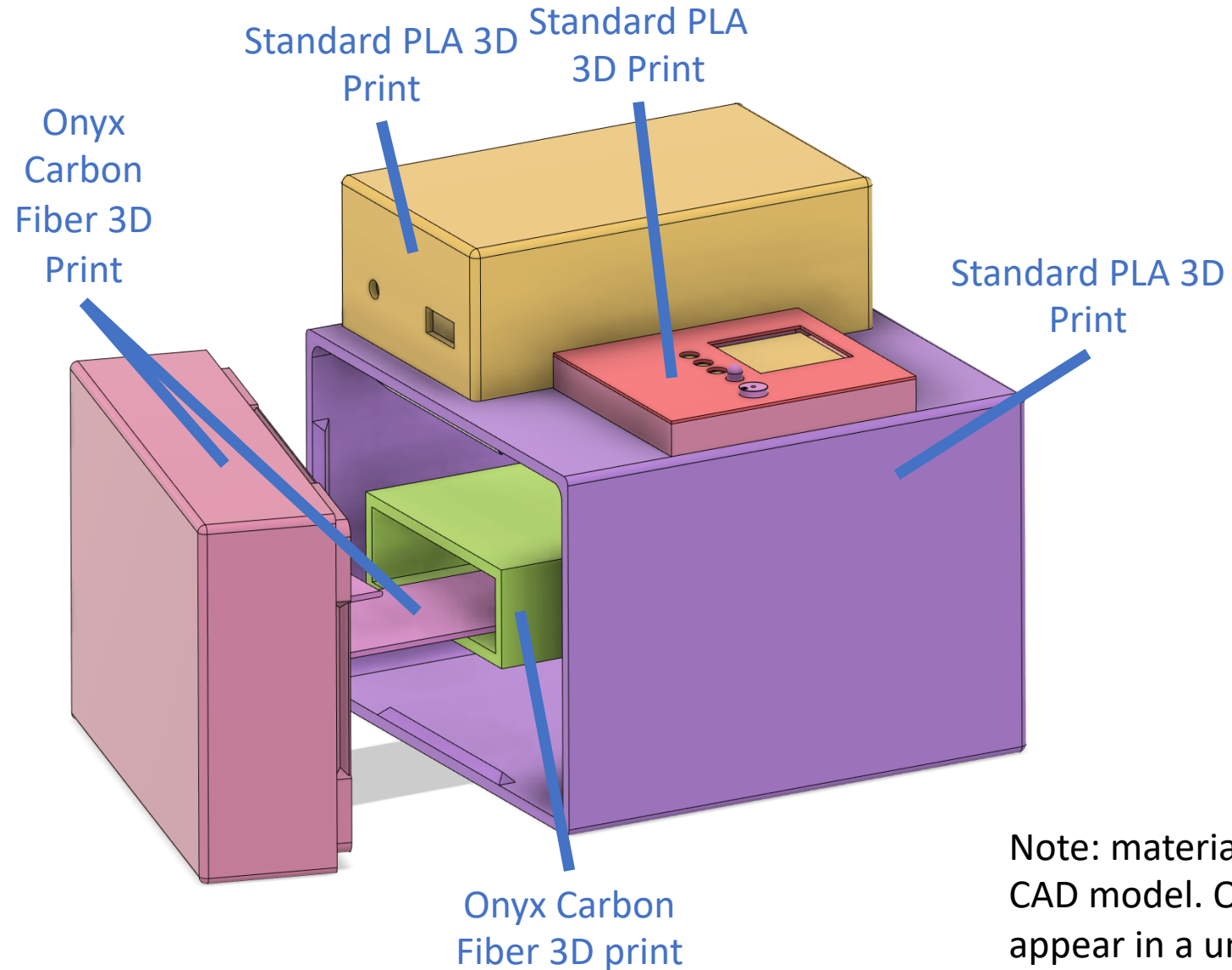


Full Assembly (Component Names)



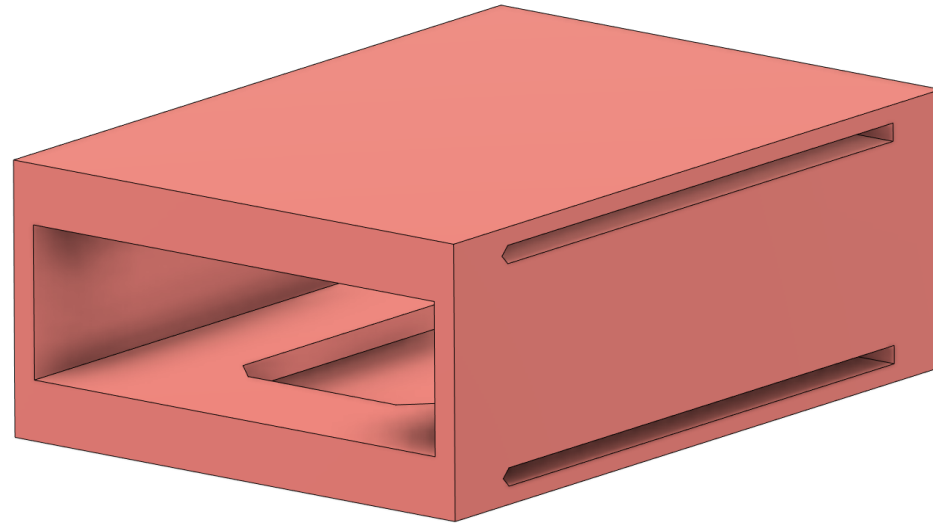
Full Assembly (Component Materials)



Note: materials will be annotated on the CAD model. Onyx carbon fiber prints will appear in a uniform black color, and 3D prints will take on a uniform color of the associated PLA

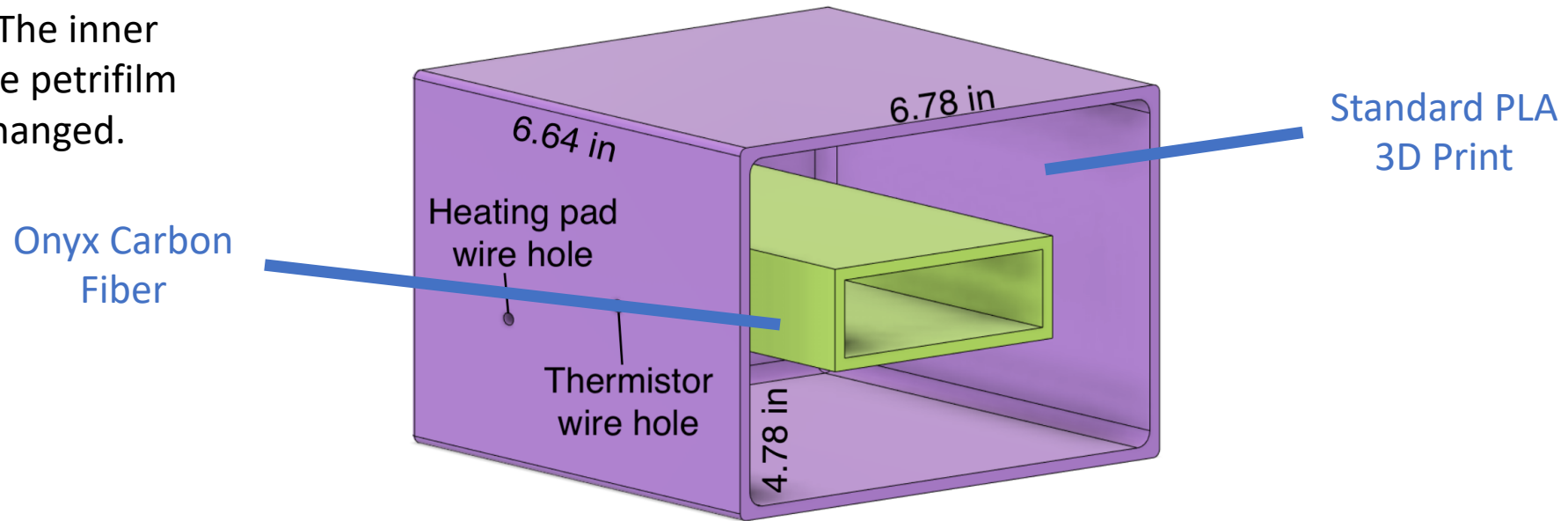
Inner Heating Chamber (Material: Onyx Carbon Fiber)

Note: this will be represented by
a green box in future slides.

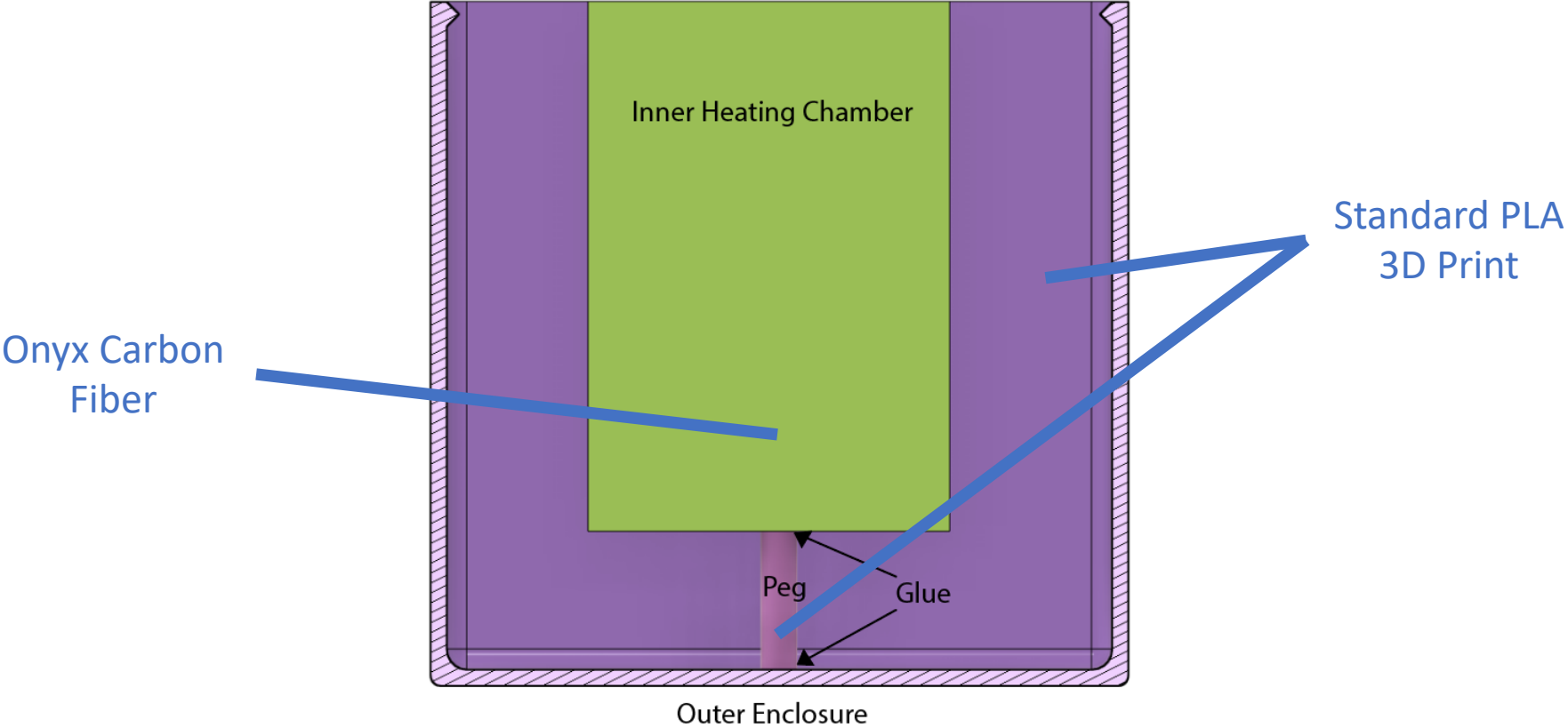


Inner Heating Chamber +
Outer Encasement, sans
Insulation (Materials
Shown)

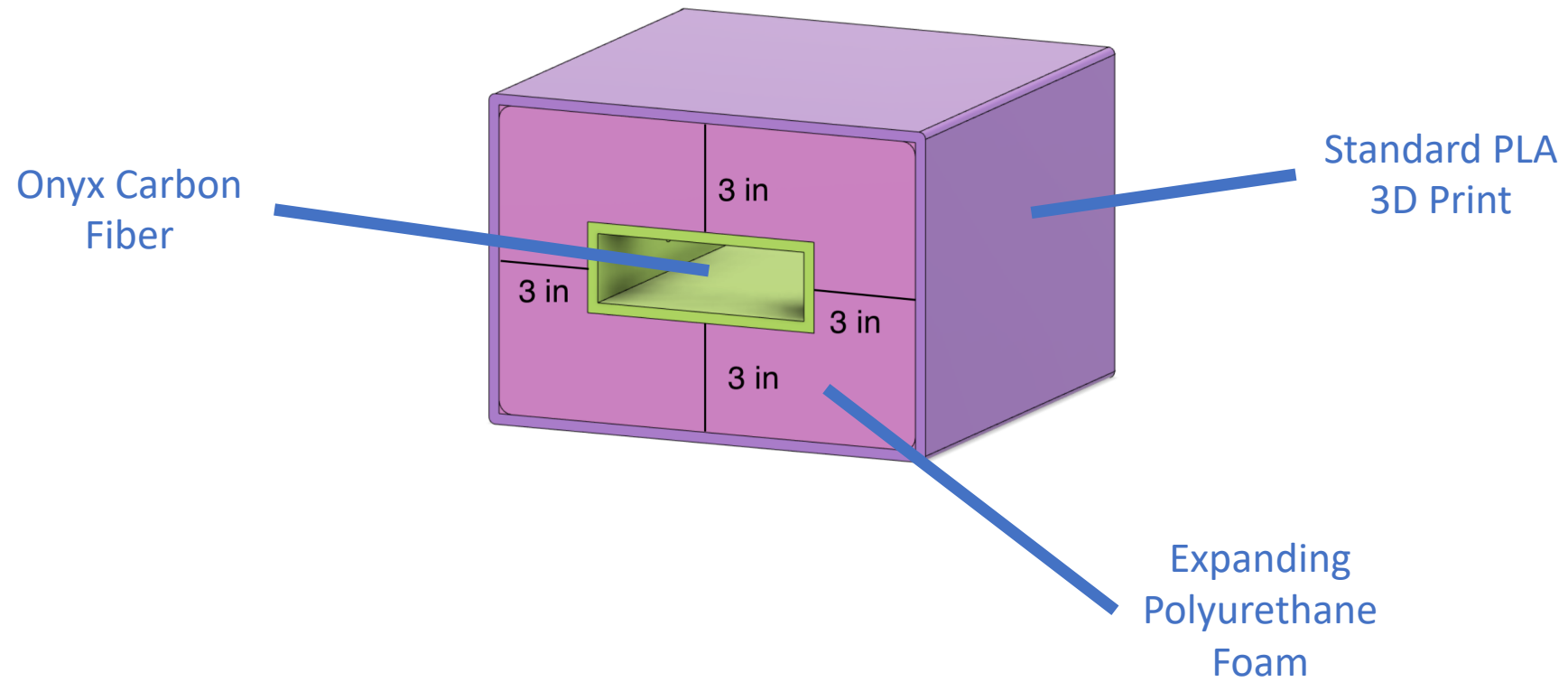
Note: the green inner heating
chamber is a representation of
the inner heating chamber on
the previous slide. The inner
dimensions with the petrifiilm
holder are left unchanged.



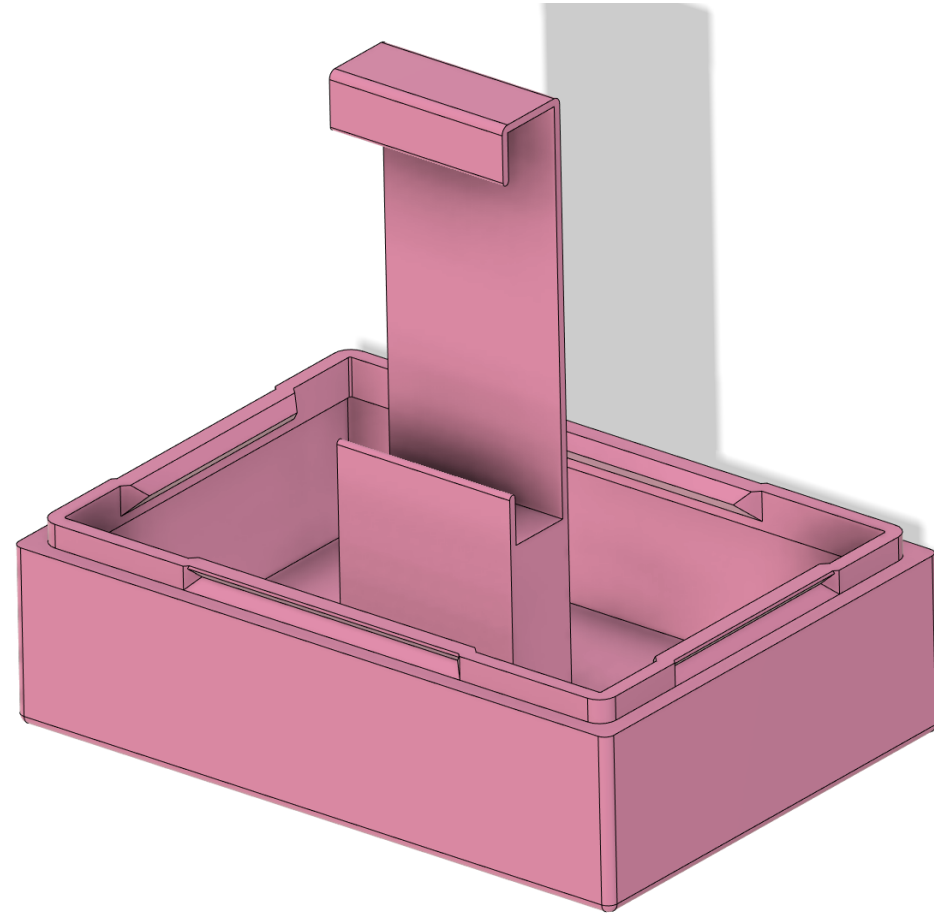
Placement of peg
mounting inner heating
chamber to the outer
enclosure



Inner Heating Chamber +
Insulation Material +
Outer Encasement
(Materials Shown)

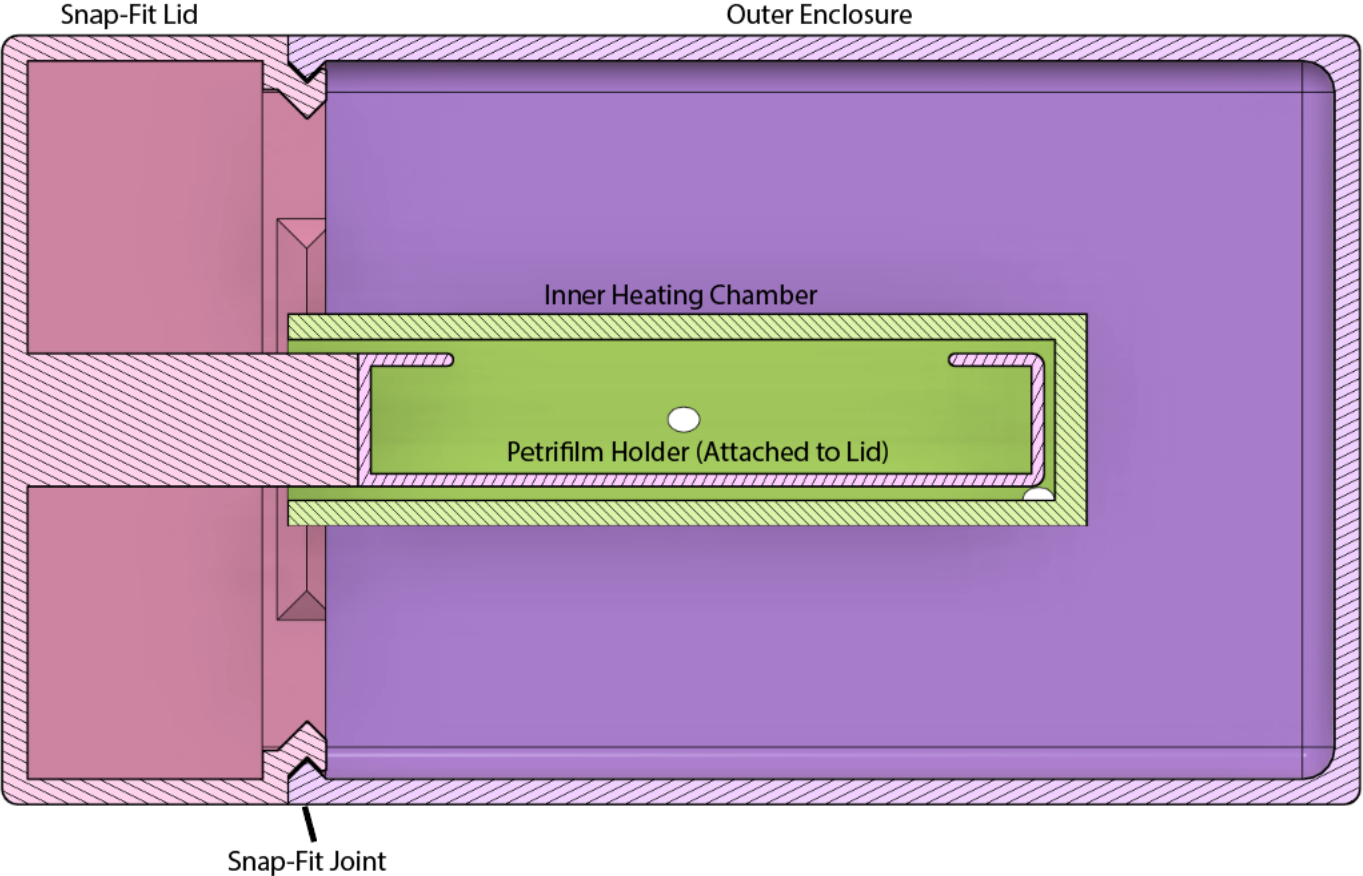


Lid + Petrifilm Holder,
sans Insulation (Material:
Onyx Carbon Fiber)



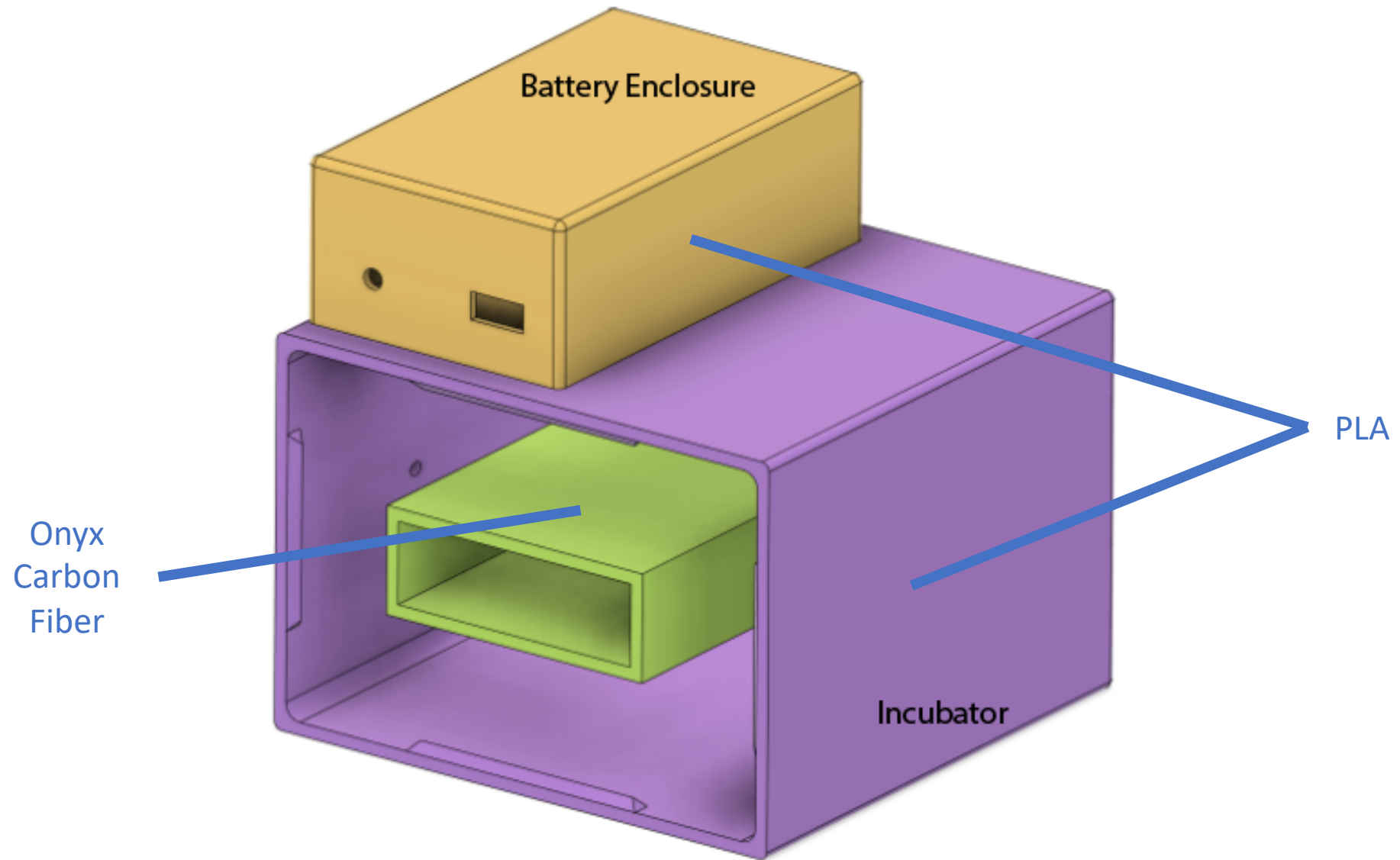
Lid + Petrifilm Holder,
interfaced with inner
heating chamber and
outer enclosure
(Materials Shown)

Onyx Carbon
Fiber
(Magenta,
Green)



PLA (purple)

Battery Enclosure and its mount
on the outer encasement
(Material: PLA)



PCB Enclosure and its mount on
the outer encasement (Material:
PLA)

