



ANNUAL  
REPORT

2025





# CONTENTS

EARTH SCIENCE INFORMATION PARTNERS (ESIP)	5
STRATEGY AND FOCUS	10
MEETINGS	12
COLLABORATION	16
ESIP LAB	20
PARTNERSHIPS	22
AWARDS	28
FINANCIAL UPDATE	30
ESIP LEADERSHIP	32
NOTE FROM THE INTERIM EXECUTIVE DIRECTOR	36
JOIN US	37

**SUGGESTED CITATION:** Earth Science Information Partners (2025): Earth Science Information Partners (ESIP) Annual Report 2025. ESIP. Online resource.

**DOI:** 10.5281/zenodo.18089502

**CONTENT AND ESIP STAFF:** Mark Parsons, Patty Allen, Alycia Crall, Aaron Friesz, and Zoe Gentes  
**GRAPHIC DESIGN:** Erica Cruz

A satellite image of Tropical Storm Chantal approaching the coast of the Carolinas, taken by NOAA's GOES-19 satellite on July 5, 2025. Credit: NOAA Satellites.



# ESIP MISSION AND VISION

---

## ESIP VISION

A WORLD WHERE DATA-DRIVEN SOLUTIONS ARE A REALITY FOR ALL BY MAKING EARTH SCIENCE DATA ACTIONABLE BY ALL WHO NEED THEM ANYTIME, ANYWHERE.

## ESIP MISSION

EMPOWER INNOVATIVE USE AND STEWARDSHIP OF EARTH SCIENCE DATA TO SOLVE OUR PLANET'S GREATEST CHALLENGES.

## ESIP CORE VALUES

### INTEGRITY

We are honest. Integrity is the basis for trust and the foundation of effective teamwork.

### INCLUSIVENESS

We put people first and recognize, appreciate, and cultivate diversity in our global community.

### COLLABORATION

We work together. We provide the space and the resources to gather people to take on challenges that cannot be solved alone.

### OPENNESS

We are an open community. We embrace open science and open mindsets through which new ideas can take root and solutions can evolve.

### CURIOSITY

We ask why and why not. We delve into exploring solutions knowing that the process is as important as the outcome.

# EARTH SCIENCE INFORMATION PARTNERS (ESIP)

---

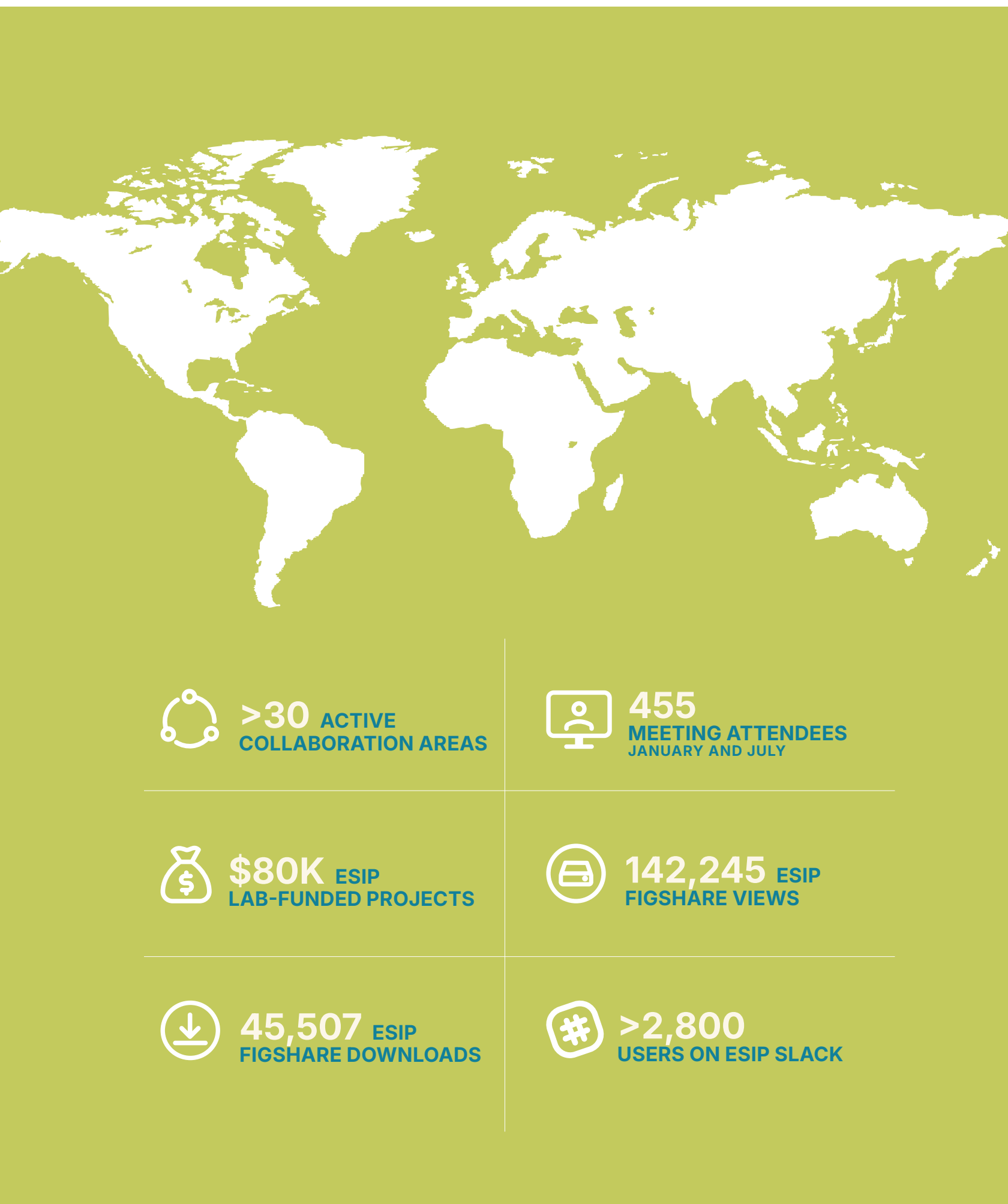


*ESIP facilitates collaboration among data professionals from different fields to identify and address common data-related challenges and opportunities.*

## A HOME FOR EARTH SCIENCE DATA PROFESSIONALS

Since 1998, ESIP has helped members of the Earth science data community find each other across organizations by fostering collaborative experiences like meetings and seed funding to foster innovation and technical skill building.

ESIP holds twice annual meetings, Collaboration Area community calls, workshops, and funds ESIP Lab pilot projects. ESIP brings together organizations as partners and is driven by individual volunteers from partner organizations and the broader Earth science data community.



## ESIP CELEBRATIONS

- WELCOMED 4 NEW ESIP PARTNERS
- SET ANOTHER RECORD FOR ESIP LAB AWARD APPLICATIONS
- SET A NEW RECORD FOR ESIP COMMUNITY FELLOW APPLICATIONS
- HOSTED ENVIRONMENTAL DATA WORKSHOPS AND HACKATHONS FOR NASA AND NOAA
- SUPPORTED TEN [COMMUNITY FELLOWS](#)
- HOSTED HUNDREDS OF COMMUNITY-LED [COLLABORATION AREA CALLS](#)
- ROLLED OUT NEW COLLABORATION AREA LANDING PAGES

Throughout the report, look for more stories to see ESIP in Action.

“ESIP is a place where Earth science data professionals can connect and find each other across organizations, across institutions.”

— SUSAN SHINGLEDECKER  
History of the People of ESIP (HOPE) interviews, July 2024



## ESIP IN ACTION #1

### ESIP IN ACTION: RESILIENT REPOSITORIES

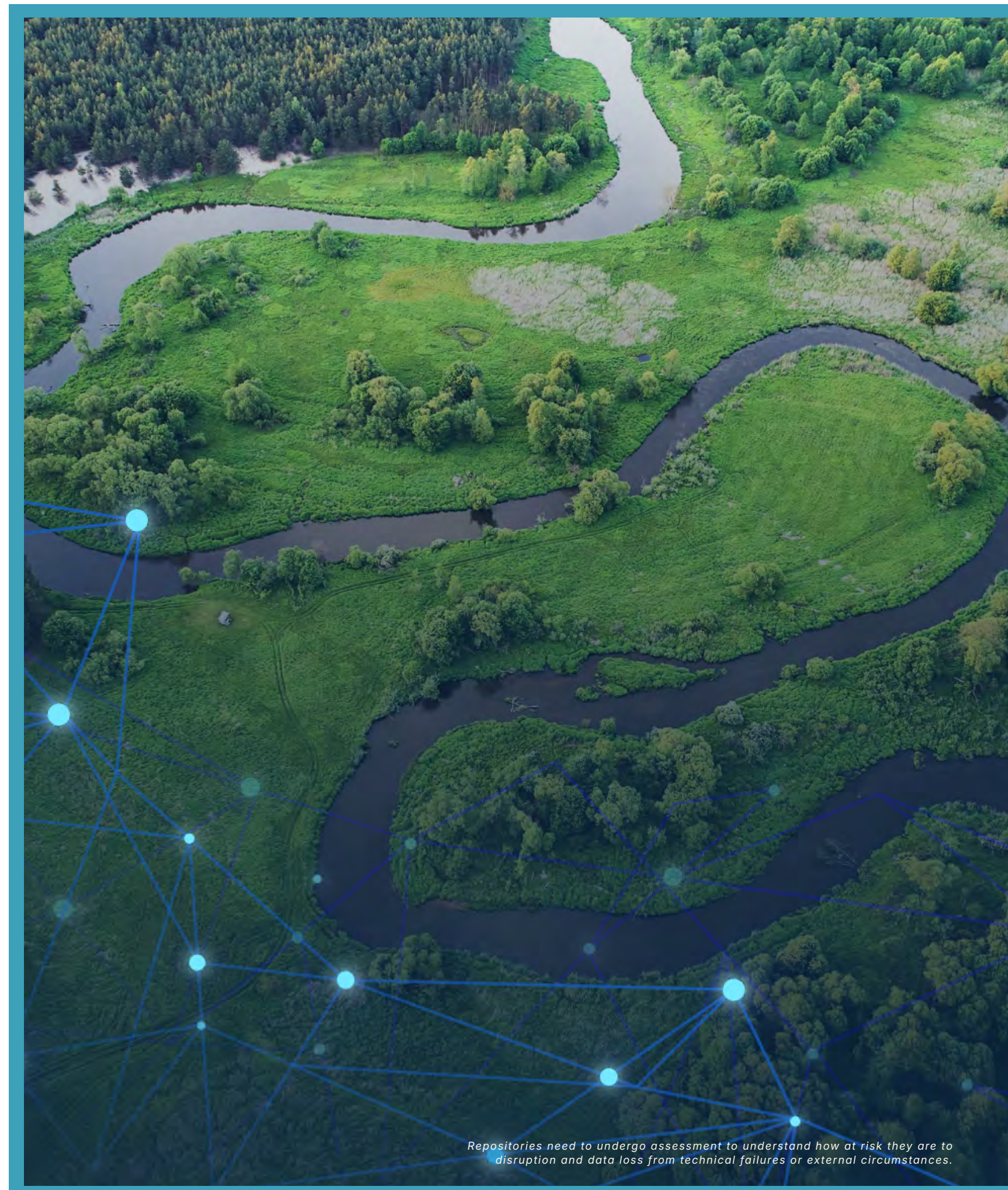
The security and accessibility of data repositories are critical. Open datasets, including federal data, drive evidence-based policymaking, research, and disaster response.

The fragility of these systems against challenges like political shifts, budget cuts, or technical failures has never been more evident. Risks such as these create significant gaps in trusted, reliable, FAIR data just when it is needed most.

The ESIP Sustainable Data Management Cluster released the Repository Crisis Scorecards in April 2025, a tool designed to help repositories evaluate their vulnerabilities to these risks. And in September, ESIP was awarded a grant from the Alfred P. Sloan Foundation to build upon this foundational work with two main goals: to strengthen repository resilience and to improve the assessment tool.

This work is key to strengthening Earth science and decision making. Resilient repositories protect the data that supports everything from emergency response to global research.

—  
Read more ESIP news and stories: [esipfed.org/news-and-blog/](https://esipfed.org/news-and-blog/)



*Repositories need to undergo assessment to understand how at risk they are to disruption and data loss from technical failures or external circumstances.*



# STRATEGY AND FOCUS

## 2021-2026 STRATEGIC & MEETING THEMES

- **THEME 1:** Making Earth Science Data Matter - increase use and promote the value of Earth science data and information
- **THEME 2:** Elevating Earth Science Data Professionals
- **THEME 3:** Promoting a Healthy and Inclusive Culture
- **THEME 4:** Increasing Earth Science Collaboration internally and with partner organizations
- **THEME 5:** Leading Innovation in Earth Science Data Frontiers

[esipfed.org/strategy](https://esipfed.org/strategy)

“

There are so many different groups that come together in ESIP: federal agencies, universities, nonprofits... Being able to come together and talk about similar challenges we're having in the data and information world but across different agencies — we're feeling like we aren't alone in our struggles.”

—MADISON LANGSETH

History of the People of ESIP (HOPE) interviews, July 2024

## 2025: INNOVATION TO IMPACT

We aim to have immediate impact in the ESIP community by unlocking solutions for our fellow data professionals. And we hope for impact in broader communities: To forge innovations that help scientists explore new and more complex questions and to connect with communities and individuals who need data, especially when they weigh critical decisions.

The path from innovation to impact is not a straight line.

There is a push, pull, and twist between the precision of binary code, the rush of build-it-as-we-fly technology, and the gray areas of being human. In ESIP, we welcome the tensions. A willingness to learn prompts questions that encourage us to expand our collective knowledge.

- Who are the end users? Where in the process can they help us innovate?
- How does Earth science data empower communities?
- What fields are evolving? Where is innovation happening?
- How does our work need to demonstrate real value? How do we better explain that value?

## 2026: BRIDGING DIVIDES: DATA, TECHNOLOGY, COMMUNITY

Earth science is at a critical juncture. We have achieved incredible progress in data collection and technological innovation, yet this very success has often led to fragmentation. Scientists are now drowning in data, and although powerful tools exist, they frequently remain inaccessible, incompatible, or trapped within disciplinary silos.

We must acknowledge and address these gaps. Gaps between those who collect data and those who analyze it; between scientific disciplines working on shared problems; and, crucially, between the scientific community and the public we serve.

Our mission is to move beyond mere access and toward true integration. This requires building more open data ecosystems, harmonizing tools and resources, and—most importantly—strengthening the human connections that are the bedrock of great science. Our goal is to ensure that our collective knowledge can be fully leveraged to meet the planet's most pressing Earth science data challenges.

## ESIP EXPLORES INTERNATIONAL COLLABORATION IN MEETINGS AND CLUSTERS

The ESIP vision is a world where data-driven solutions are a reality for all by making Earth science data actionable by all who need them anytime, anywhere. The “anywhere” is key; many ESIP community members participate from Australia, Europe, and elsewhere. This year, we explored new ways to collaborate across borders with those invested in advancing Earth science data, through hub-and-spoke versions of our Meetings, conference and cluster connections, and more.

# MEETINGS

The broader ESIP community meets every January and July. The ESIP Meetings bring together a wide array of data professionals across the Earth sciences in government, academia, and industry. The 2025 January ESIP Meeting was all virtual and the 2025 July ESIP Meeting provided some virtual access but remained focused on gathering in-person. A hub-and-spoke virtual model was also piloted with a group from Canberra, Australia.

The framework of both the ESIP Meetings is collaborative, with dozens of breakout sessions led by community participants. The gatherings are often a gateway for Earth science data professionals to find their home in ESIP.

In October, we published a [Community Report](#) summarizing feedback from the July Meeting. For in-person, attendees say they appreciate the networking, idea exchange, and professional development offered by ESIP Meetings. Virtual participation also worked well for content access but had limited networking opportunities. Specifically, attendees recommend stronger support for virtual engagement and exploring [hub-and-spoke models](#) to broaden participation. Despite a shift in attendance proportions (fewer federal employees attending), participation was vivacious. Overall, the meeting was seen as a valuable use of time, with clear pathways for enhancing accessibility, community building, and hybrid participation in future events.

## MEETINGS BY THE NUMBERS

**2** ESIP MEETINGS      **455** MEETING ATTENDEES  
**>200** SPEAKERS      **140** FIRST TIMERS  
**71** COMMUNITY-LED BREAKOUT SESSIONS  
**30** RESEARCH SHOWCASE POSTERS, DEMOS, AND MORE



2025 ESIP Community Fellow Kesondra Key discusses her Research Showcase poster at the July Meeting.

## JANUARY 2025

### PLENARIES

**OPENING PLENARY:** Data Enhanced Decisions: Data in the Disaster Response Cycle  
**SPEAKER:** Kasie Richards (American Red Cross)

**PLENARY:** Impactful Co-Production: Building Teams, Not Just Products  
**SPEAKER:** Kira Sullivan-Wiley (The Pew Charitable Trusts)

### CLOSING PLENARY AND PEER RECOGNITION CEREMONY

Get a fast-paced overview of the [January 2025 Meeting Highlights](#) and other recordings on ESIP's YouTube channel.

## JULY 2025

### PLENARIES

#### WELCOME AND OPENING PLENARY

**SPEAKERS:** Brianna Pagán (Development Seed) - "Resilience as Innovation, Remembering and Reconnecting as the Means for Impact"  
 Xiuquan Wan (Canadian Centre for Climate Change and Adaptation, Univ. of Prince Edward Island, Falkenberg Award) - "Empowering Local Communities with Geospatial Technology: Building a Climate Smart Future"

#### ESIP PLENARY AND RASKIN SCHOLAR PLENARY:

**SPEAKERS:** Jed Sundwall (Radiant Earth) - "Planetary-Scale Data Institutions"  
 Kate Thompson (University of Wisconsin Madison, Raskin Scholar) - "Hyperspectral remote detection of contaminant-induced vegetative stress"

#### CLOSING PLENARY: ESIP Business Meeting and Interactive Strategic Planning

Experience the collaboration and innovation in the [July 2025 Meeting Highlights](#) on the ESIP YouTube channel.





July Meeting participants make posters with markers for the FUNding Friday Award competition.



Breakout sessions involve deep dives into topics critical to the Earth Science Data discussions.



"Birds of a Feather" signs help people with like interests find each other at lunch.



The Research Showcase is a lively gathering of ESIP's community.



# COLLABORATION

## CLUSTERS

Collectively, clusters and technical committees are called Collaboration Areas by the ESIP community and focus on specific domains or technical areas. Collaboration Area participants set goals and produce a wide range of outputs. Some host webinar series while others author white papers or guidelines, and still others find it valuable to host an hour of open discussion. Administrative committees help guide and govern ESIP.

Join a monthly call, contribute to a cluster project, or connect with other Earth science data professionals: [esipfed.org/collaborate](https://esipfed.org/collaborate)

## COLLABORATION AREAS

### CLUSTERS

- Air Quality
- Biological Data Standards
- Coalition on Publishing Data in the Earth and Space Sciences (COPDESS)
- Community Ontology Repository (COR)
- Council of Data Facilities (CDF)
- Data Help Desk (DHD)
- Data Readiness
- Disaster Lifecycle
- Discovery
- Earth Comms
- Envirosensing
- Information Quality
- Machine Learning
- Marine Data
- Open Science
- Physical Sample Curation
- Schema.org
- Semantic Harmonization
- Soil Ontology and Informatics
- Sustainable Data Management
- Wildfire

### TECHNICAL COMMITTEES

- Data Stewardship Committee
- Education Committee
- Information Technology and Interoperability (IT&I) Committee
- Semantic Technologies Committee

### ADMINISTRATIVE

- Equity, Diversity, Inclusion, and Justice (EDIJ) Committee
- Finance Committee
- Governance Committee
- Meetings Committee
- Nominations Committee
- Partnership Committee
- Program Committee

## COLLABORATION AREA HIGHLIGHTS

### BIOLOGICAL DATA STANDARDS CLUSTER

**WHAT WE DID:** The cluster collaborated with USGS, other organizations, and community members to build a Biological Standards Primer Guide for the ESIP community to use.

**WHY WE DO IT:** Understanding changes in biodiversity requires a shared baseline. Data standards, like FAIR (findable, accessible, interoperable, and reusable data), make collective knowledge possible.

### WILDFIRE CLUSTER

**WHAT WE DID:** Through the Wildfire Cluster, the Wildfire Commons was able to support cluster activities at the ESIP Summer Meeting 2025, and received timely feedback and advice for growing adoption within the community and supporting new use cases.

**WHY WE DO IT:** Wildfires are only getting worse, and there are major challenges in putting data to work for non-technical decision makers.

### DATA STEWARDSHIP COMMITTEE

**WHAT WE DID:** This committee [developed a primer](#) for Data Management Plans (DMPs) that offers examples of DMPs from ESIP-relevant funding agencies.

**WHY WE DO IT:** Creating and preserving quality Earth system science data empowers the innovative use of data to solve grand challenges.

### EARTH COMMS CLUSTER

**WHAT WE DID:** A new cluster was formed to connect Earth science communicators through shared tools, candid discussions, and monthly calls.

**WHY WE DO IT:** Because no one communicates alone — and Earth science deserves better storytelling, strategy, and support.





The Data Help Desk at the 2025 European Geosciences Union meeting in Vienna, Austria was as busy as ever. Credit: Susan Shingledecker.

## ESIP IN ACTION #2

### ESIP IN ACTION: FUNDING FRIDAY SPURS ACTIVITY IN THE DATA HELP DESK CLUSTER

With seed money from a 2024 FUNDing Friday project, ESIP's Data Help Desk (DHD) Cluster made significant progress in 2025 towards providing materials and resources needed by volunteers and organizers to support organizing the Help Desk at high-level conferences throughout the year.

The Data Help Desk provides researchers with opportunities to engage with informatics experts familiar with their scientific domain and learn about skills and techniques that will help further their research and make their data and software open and FAIR. DHD volunteers are available to answer data questions and give software and tool demonstrations.

Organizing the DHD requires time, effort, forethought, and lots of volunteer management and coordination. In the past, a few key partners have worked with ESIP to host the DHD. However, the task can be overwhelming for people who are interested but have never done it before. Now, they have handy resources available to them, including a [playbook](#) that highlights what to expect and step-by-step guides to organizing, advertising, recruiting for, and executing a DHD.

Formulation of the playbook was spearheaded by Lynne Merchant, along with DHD Cluster co-chairs Chandra Earl and Steve Diggs. Amber Budden is credited with creating the FUNDing Friday idea.

The DHD appeared at several conferences during 2025, including American Meteorological Society (AMS), European Geosciences Union (EGU), Geological Society of America (GSA), and American Geophysical Union (AGU). With the Playbook and resources free and available, we hope to see more organizations taking up the mantle of putting together a Data Help Desk at their favorite conferences.

Read more ESIP news and stories: [esipfed.org/news-and-blog/](https://esipfed.org/news-and-blog/)



# ESIP LAB

ESIP's core values of Curiosity and Openness are showcased in the ESIP Lab, which provides small-grant funding opportunities for Earth science technology research projects. Each project must outline a specific learning objective. So, rather than convincing funders that a proposal has all the answers already, the ESIP Lab looks at roadblocks that a small investment can help overcome. The ESIP Lab also provides a collaborative environment, access to tools and cloud resources, and support to innovate.



*The ESIP Lab seeks to increase the collective technical savvy of the Earth science community and promote transparency about the job skills required to understand our changing planet.*

The focus of the 2024 cohort of funded projects was on climate change and community impact, and project PIs worked to realize those efforts during 2025. Lauren Brase, for example, presented outcomes from the project “Resilience and Innovation in Nature-based Stormwater Solutions (RAINSS)” at the ESIP 2025 July Meeting. The project partners with schools and communities facing stormwater flooding; new curriculum materials were implemented in seven classrooms and shared at four teacher workshops, and two rain gardens were installed for hands-on student experiences.

The 2025 ESIP Lab RFP focused on enabling broader adoption and effective use of AI and machine learning in geospatial and Earth science. The awarded projects delve into topics including educational toolsets, open source mapping, and citizen science initiatives. As a space where so many disciplines mix, ESIP is a playground for learning and vetting new ideas, software, and tools. That is what the ESIP Lab grants are intended for.

## FUNDED 2024 PROJECTS

### CLIMATE CHANGE AND COMMUNITY IMPACT COHORT

#### COMMUNITY-LED, OPENSOURCE, OPPORTUNITIES TO LEARN (COOL): COMMUNITY HEATMAPPER AND RESILIENCE BUILDER IN MINORITY COMMUNITIES IN MIAMI, FL

- Amy Quarkume, Keith Maull, Agbeli Ameko, Jessica Moulite | Howard University

#### LEVERAGING GENERATIVE ARTIFICIAL INTELLIGENCE (AI) FOR AUTOMATED CLIMATE RESILIENCE DASHBOARDS: A CASE STUDY ON FLOOD MONITORING IN CENTRAL APPALACHIA

- Qian Huang | East Tennessee State University
- Tao Hu | Oklahoma State University

#### OPEN SCIENCE CLOUD TOOLS AND EDUCATIONAL MATERIALS FOR THE INTEGRATION OF NCLIMGRID - DAILY AND SOCIAL VULNERABILITY INDEX DATASETS

- Joshua Brinks, Tom Parris | ISciences, LLC

#### RESILIENCE AND INNOVATION IN NATURE-BASED STORMWATER SOLUTIONS (RAINSS)

- Lauren Brase, Ed Robeck | American Geosciences Institute

[esipfed.org/funded-projects](https://esipfed.org/funded-projects)



# PARTNERSHIPS

*Partner organizations create the stable backbone of ESIP's collaborative infrastructure.*

From meetings to monthly calls, individual participation is open to everyone and it is not a requirement for participants to be part of partner organizations. Organizations can become ESIP partners with voting representatives and volunteers who often help lead as cluster chairs, session organizers, and committee members. Additionally, some partner organizations step up as financial contributors and become sponsors for Meetings or other events. ESIP works with more than 180 Partners and is supported by cooperative agreements with four federal agencies: National Aeronautics and Space Administration (NASA), National Oceanic and Atmospheric Administration (NOAA), U.S. Geological Survey (USGS), and U.S. Forest Service (USFS).

## NEW PARTNERS

*Welcome to our new partners!*

ALPHA OMEGA

NIH NATIONAL INSTITUTE OF ENVIRONMENTAL HEALTH SCIENCES

SAGEMATH

TERRA FOX ANALYTICS



## SPONSORS

ESIP is a community that spans multiple sectors including government, academic institutions, and the private sector. Sponsoring ESIP brings an organization's financial support along with products, expertise, and people. We are grateful for our sponsorship from the following organizations in FY2025.



ELEMENT 84  
Sustainability Sponsor  
[element84.com](https://element84.com)



AMAZON SUSTAINABILITY DATA INITIATIVE  
Silver Level Sponsor  
[sustainabilityexchange.amazon.com/data-initiative](https://sustainabilityexchange.amazon.com/data-initiative)



ESRI  
Silver Level Sponsor  
[esri.com](https://esri.com)



AGU  
Research Showcase Sponsor  
[agu.org](https://agu.org)



SSAI  
Caffeine Sponsor  
[ssaihq.com](https://ssaihq.com)



ISCIENCES  
Sponsor  
[isciences.com](https://isciences.com)

## GRANT AWARDS

Grants provide small organizations like ESIP with essential funding needed to launch projects that drive advancement in the Earth science data community. We are grateful for grant support from the following organizations this year.



ALFRED P. SLOAN FOUNDATION  
Grant Award  
[sloan.org](https://sloan.org)

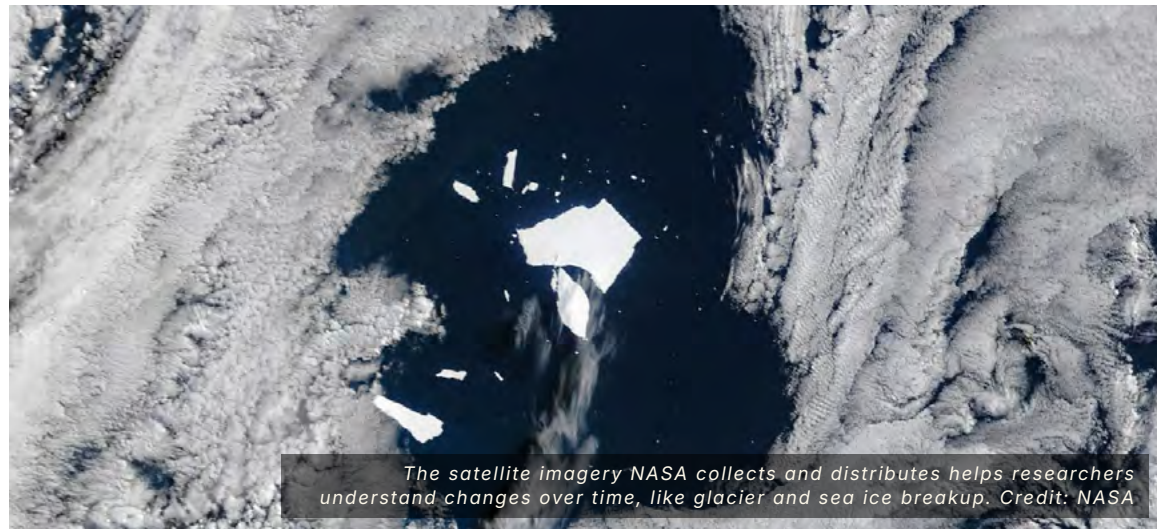


## FEDERAL FUNDERS

NASA, NOAA, and USGS provide the foundation of funding and support for the ESIP Community, with an additional cooperative agreement in 2024 with USFS. Multiyear cooperative agreements with our federal partners focus on collaboratively meeting needs in Earth science data management, engaging a broad community to do so. Even with different data and missions, each agency shares challenges like moving data to the cloud, navigating commercial partnerships, and connecting with domain scientists and cultivating the next generation for our workforce.

### NASA

ESIP supports the annual [Earth Science Data System Working Groups \(ESDSWG\)](#) and runs the evaluation process for the [Advanced Information Systems Technology \(AIST\) Program](#). Both the ESIP Technical Community Director and the Communications Director coordinate the Spark@AGU rapid-fire storytelling event with NASA team members. NASA team members are also involved with the ESIP Committees and Clusters.

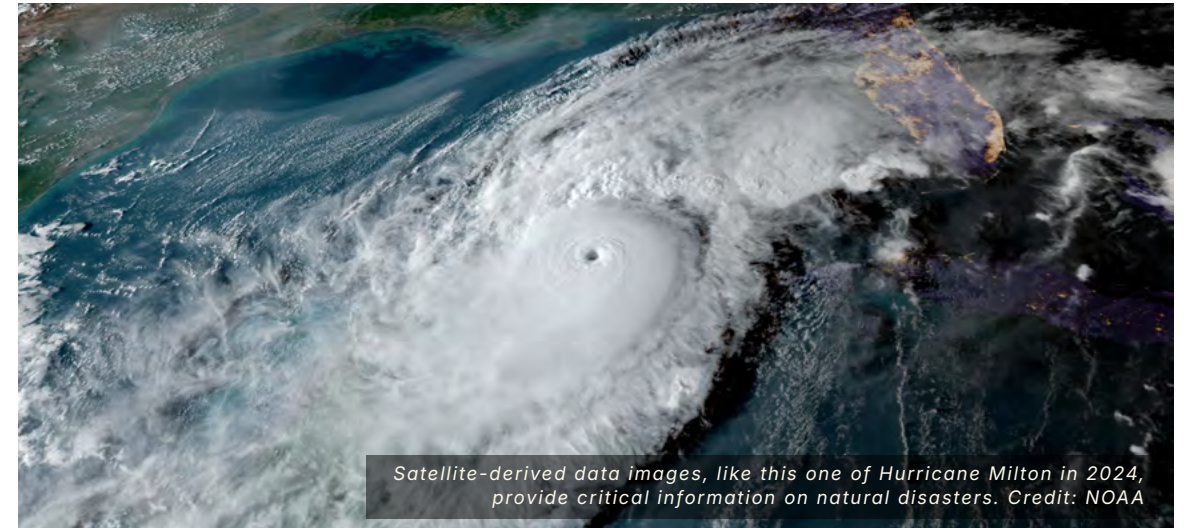


### USFS

In 2024, ESIP welcomed the U.S. Forest Service as ESIP's newest agency funder through a cooperative agreement. The USFS Applied Earth Observations Innovation Partnership is in the process of becoming a Collaborative Area within ESIP. The USFS Applied Earth Observations Innovation Partnership (AEOIP) has become a new Collaborative Area within ESIP as of late 2025.

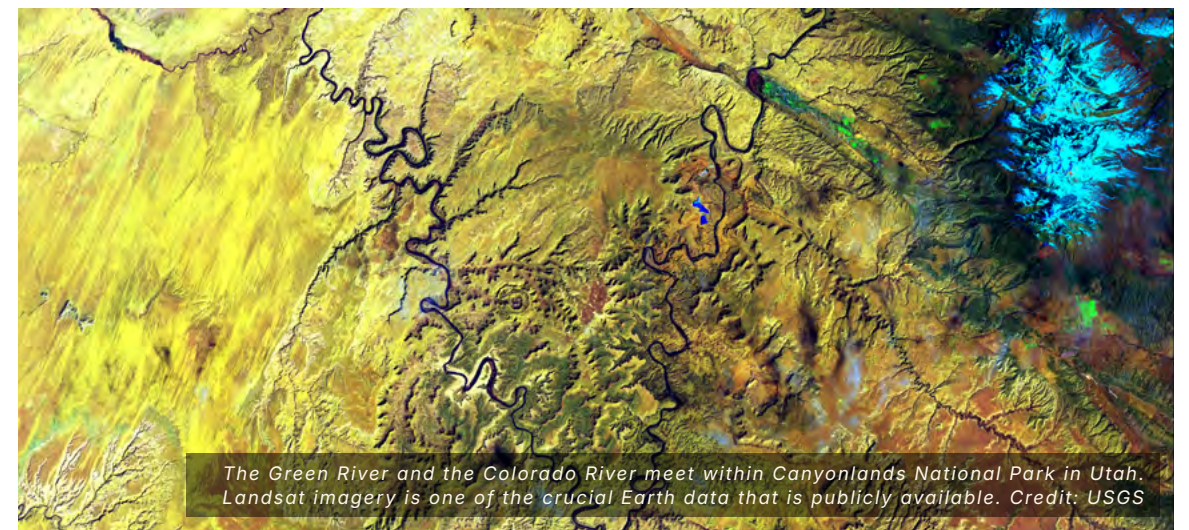
### NOAA

In May 2025, ESIP supported the annual [Environmental Data Management Workshop \(EDMW\)](#). In September 2025, ESIP supported the [7th NOAA AI Workshop](#) on leveraging artificial intelligence in environmental sciences. NOAA team members are notable leaders in the ESIP Board of Directors and the Data Readiness Cluster and Wildfire Cluster.



### USGS

USGS team members are notable leaders in the ESIP Board, the Partnership Committee, and the broader community. The ESIP Technical Community Director attends the USGS CDI (Community for Data Integration) monthly calls. USGS participants also continue to stay involved with ESIP's Information Technology and Interoperability [\(IT&I\) Committee](#) in a monthly webinar series.





## ESIP IN ACTION #3

### ESIP IN ACTION: GEN AI FOR FLOOD DASHBOARDS

Through the ESIP Lab, small grants support pilot projects. And sometimes those projects produce useful dashboards that enhance community preparedness and decision making.

A project awarded in 2024 to Qian Huang (Center for Rural Health and Research at East Tennessee State University) and Tao Hu (Oklahoma State University) set out to use Generative Artificial Intelligence (gen AI) for flood mapping and prediction in central Appalachia.

Following Hurricane Helene, many Appalachian cities and surrounding areas flooded, putting roads, homes, and businesses feet under water. In particularly vulnerable communities, sharing timely data and resources is crucial. Traditional dashboards can rely on professional expertise and time-consuming human analysis, creating a bottleneck for use.

With ESIP Lab funding, Huang and Hu [created a dashboard](#) for Central Appalachian communities leveraging gen AI to enhance the collection, processing, and integration of flood data from various sources. It integrates real-time data from USGS and WaterWatch flood maps, along with flood risk assessment tools from FEMA and the National Water Prediction Service. Gen AI on the dashboard provides options for speeding up and automating processes to enhance decision making, and will allow users to ask the dashboard questions in natural language, as if having a conversation.

Overall, the accessible platform enables users to more easily visualize and analyze flood data, allowing for better-informed communities in the face of natural disasters.

—  
Read more ESIP news and stories: [esipfed.org/news-and-blog/](https://esipfed.org/news-and-blog/)



North Carolina after Hurricane Helene. Credit: NCDOT communications



# AWARDS

An important aspect of the ESIP community is recognizing the outstanding accomplishments, achievements, and service to our community by individual participants. Below are the recipients for FY2025. [Read more.](#)

## MARTHA MAIDEN AWARD

*Named for Martha E. Maiden, Program Executive for Earth Science Data Systems at NASA, the award honors individuals who have demonstrated leadership, dedication, and a collaborative spirit in advancing the field of Earth science information.*

### KARL BENEDICT

- former director of Research Data Services and Information Technology Services, University of New Mexico Libraries

**WHAT I DO:** Work with research collaborators like archaeologists, natural resource managers, public health experts, atmospheric modelers, economists, linguists, biologists and geographers.

**WHY I DO IT:** Technophilia – enjoying the development of longstanding collaborations at the intersection of data and technology.

## PRESIDENT'S AWARD

*Selected by the current ESIP President, the award recognizes a participant who has made significant, tangible contributions to ESIP during the previous year.*

### MARK PARSONS

- retired Research Scientist (later named ESIP Interim Executive Director)

**WHAT I DO:** Retired from a career of building communities, trust, and standards around data, because community, trust, and standards make data work.

**WHY I DO IT:** ESIP is a great place to do all that. Also, for some reason data citation gets me excited.

## CATALYST AWARD

*Given to participants who have brought about positive change in ESIP and inspired other members to take action. Selected by the President, the award recognizes exceptional volunteer efforts and enthusiasm.*

### CAROLINA BERYS, CCHDO

- Scripps Institution of Oceanography, University of California San Diego

**WHAT I DO:** I manage oceanographic data and facilitate collaboration on advancing marine data management practices.

**WHY I DO IT:** To preserve vital knowledge about our oceans, ensuring it supports current and future research.

## RASKIN SCHOLAR

*Given to a current graduate student in the Earth or computer sciences, the scholarship is named for longtime ESIP community member Robert G. Raskin, and seeks to promote collaboration, research support, and exposure for talented students with an interest in community evolution of Earth science data systems.*

### KATE THOMPSON

- Townsend Lab, University of Wisconsin-Madison

**WHAT I DO:** Explores the potential of hyperspectral imagery to monitor contaminant-induced stress responses in vegetation, to find diagnostics of exposure to contaminants from nuclear power production.

**WHY I DO IT:** This work could lead to new remote, high-frequency, non-destructive estimates of pollutants across landscapes, and enhance researchers' ability to detect accidental contaminant releases. I'm really interested in questions of policymaking and accountability.

## FALKENBERG AWARD

*Co-presented with the American Geophysical Union (AGU), the award recognizes an early to mid-career scientist who has contributed to the quality of life, economic opportunities and stewardship of the planet through the use of Earth science information and to the public awareness of the importance of understanding our planet.*

### XIUQUAN (XANDER) WANG

- Canadian Centre for Climate Change and Adaptation, University of Prince Edward Island

**WHAT I DO:** My work aims to raise public awareness of climate change and promote community-based climate actions through the advancement of Earth science informatics.

**WHY I DO IT:** Community-based climate actions are urgently needed to help increase our societal resilience to climate change and build a climate-smart future for many generations to come.

## COLLABORATION OF THE YEAR AWARD

*This award, formerly Partner of the Year award but still selected by the Partnership Committee, honors an ESIP collaboration that exemplifies the spirit of ESIP in one or more areas, through the sharing of a success story. The committee defines a collaboration as two or more individuals or groups working together, and the joint effort does not need to be a formal collaboration. 2025 was the inaugural Collaboration of the Year Award - it was formerly Partner of the Year Award.*

## THE INFORMATION QUALITY CLUSTER (IQC)

**WHAT WE DO:** Bring together domain experts across organizations and disciplines to assess Earth science data quality, establish standards for global adoption, and develop FAIR quality frameworks.

**WHY WE DO IT:** Baseline standards foster collaboration across agencies and international organizations and maximize the use of Earth science data for climate change studies and Earth science applications.



# FINANCIAL UPDATE

ESIP’s revenue comes primarily from three core Cooperative Agreements with NASA, NOAA, and USGS. ESIP also has a fourth federal funding partner with a Cooperative Agreement with USFS. Meeting registration and sponsorship additionally comprise important revenue sources to fund work not covered by federal agreements.

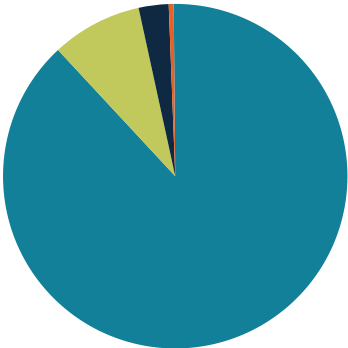
SUPPORT AND REVENUE	FY2024 TOTAL	FY2025 TOTAL
GOVERNMENT GRANTS/CONTRACT/UNIV	\$1,075,707	\$1,278,296
SPONSORSHIP	\$27,500	\$40,725
REGISTRATION	\$191,112	\$123,165
OTHER	\$12,501	\$6,777
TOTAL SUPPORT AND REVENUE	\$1,306,820	\$1,448,963

EXPENSES		
PROGRAM SERVICES	\$1,004,041	\$1,012,109
MANAGEMENT AND GENERAL	\$279,761	\$282,164
TOTAL EXPENSES	\$1,283,802	\$1,294,273
CHANGE IN NET ASSETS	\$23,018	\$99,282
NET ASSETS, BEGINNING OF YEAR	\$407,018	\$555,276
NET ASSETS, END OF YEAR	\$555,276	\$654,558

**NOTE:** These results have not been audited at press time; ESIP is audited annually.

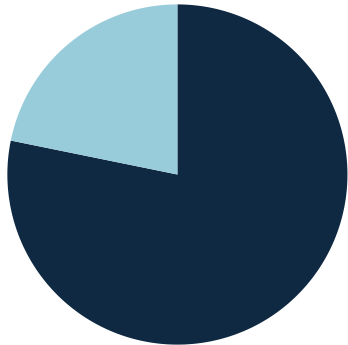
## FY25 REVENUE

- CONTRIBUTED SUPPORT: 88.2%
- REGISTRATION: 8.5%
- SPONSORSHIP: 2.8%
- OTHER: 0.5%



## FY25 EXPENSES

- DIRECT: 78.2%
- GENERAL ADMIN: 21.8%





# ESIP LEADERSHIP



Susan Shingledecker (ESIP Executive Director 2018-2025) received a departing gift from new ESIP President Yuhao (Douglas) Rao.

Board member Steve Diggs and IT&I Chair Chris Battisto at the 2025 July ESIP Meeting, in Seattle, WA.



As a volunteer organization, ESIP is led by the community and is truly a team effort between ESIP staff, the Board of Directors, the Program Committee, Cluster Chairs, Community Fellows, and the hundreds of people who contribute to our Earth science data community.

2025 saw some change-over in staff as team members sought changes like fully embracing the farming life, full-time parenting, or returning to roots. We're fortunate to have passionate people on our team and the ability to welcome in new staff like a well-oiled machine.

## STAFF

### ALLISON MILLS

Communications Director  
- departed ESIP April 2025

### MEGAN ORLANDO

Community Director  
- departed ESIP June 2025

### SUSAN SHINGLEDECKER

Executive Director  
- departed ESIP August 2025

### PATTY ALLEN

Operations Director

### ZOE GENTES

Communications Director  
- started May 2025

### ALYCIA CRALL

Community Director  
- started June 2025

### MARK PARSONS

Interim Executive Director  
- started July 2025

### AARON FRIESZ

Technical Community Director

## ELECTED LEADERSHIP

### BOARD OF DIRECTORS

ESIP elects its officers, representatives, and committee chairs prior to the Annual Partner Assembly Meeting. The Board meets quarterly to govern ESIP.

#### YUHAN (DOUGLAS) RAO, President

- North Carolina Institute for Climate Studies (NCICS) and NOAA NCEI

**AMBER BUDDEN**, Vice President - University of California Santa Barbara

**JOHN RELPH**, Governance Committee Chair - NOAA NCEI

**KARL BENEDICT**, Finance Committee Chair - University of New Mexico

**MIKE MAHONEY**, Partnership Committee Chair - USGS

**STEVE DIGGS**, EDIJ Chair - University of California San Diego

**RICH SIGNELL**, Nominations Committee Chair - Open Science Computing

**MIKE DANIELS**, At-large Board Member - National Center for Atmospheric Research (NCAR)

**BRUCE CARON**, At-large Board Member - New Media Research Institute

**CHRIS STONER**, At-large Board Member - Amazon Web Services

### PROGRAM COMMITTEE

The ESIP Program Committee meets monthly to guide ESIP programs and includes the President, Vice-President, and all the technical and administrative committee chairs.

#### YUHAN (DOUGLAS) RAO, President

North Carolina Institute for Climate Studies (NCICS) and NOAA NCEI

**AMBER BUDDEN**, Vice President - University of California Santa Barbara

**JOHN RELPH**, Governance Committee Chair - NOAA NCEI

**KARL BENEDICT**, Finance Committee Chair - University of New Mexico

**MIKE MAHONEY**, Partnership Committee Chair - USGS

**RICH SIGNELL**, Nominations Committee Chair - Open Science Computing

**CARLA MCAULIFFE**, Education Committee Chair - IGES

**CHRIS BATTISTO**, IT&I Chair - NASA

**COGAN SHIMIZU**, Semantic Tech Committee Chair - Wright State University

**GE PENG**, Data Stewardship Committee Chair - NASA - IMPACT



CLUSTER LEADERSHIP

*Collaboration is where ESIP's magic happens. With 20 active Clusters in FY2025 and more being formed, these leaders bring ESIP's mission down to Earth, bringing together people across industry, government, and academia to solve challenges in Earth science data stewardship.*

- STEVE YOUNG AND BETH HUFFER - Air Quality
- STEVE FORMEL, LAURA BRENSKELLE, AND KIT LEWERS - Biological Data Standards
- KERSTIN LEHNERT, LESLEY WYBORN, DANIE KINKADE, AND SHELLEY STALL - COPDESS
- NICK JARBOE AND KAREN STOCKS - Council of Data Facilities
- CHANDRA EARL, STEVE DIGGS - Data Help Desk
- YUHAN RAO, TYLER CHRISTENSEN, AND ROB REDMON - Data Readiness
- DAVE JONES AND MAGGI GLASSCOE - Disaster Lifecycle
- JONATHAN BLYTHE - Discovery
- SARA MACK, KIRI CARINI, AND ALLISON MILLS - Earth Comms
- JOSEPH BELL, JAMES GALLAGHER, AND DAN FUKA - Envirosensing
- ANNE THERSEN AND MARIA SHATZ - Geodata4Health
- ZIHENG (JENSEN) SUN - Machine Learning
- CAROLINA BERYS, MATHEW BIDDLE, AND JOSEPH GUM - Marine Data
- COLLEEN ROSALES AND LORRAINE TIGHE - Open Science
- JOAN DAMEROW, NATALIE RAI, AND ANDREA THOMER - Physical Sample Curation
- ADAM SHEPHERD, IAN NESBITT, AND COLIN SMITH - Schema.org
- RUTH DUERR AND GARY BERG-CROSS - Semantic Harmonization
- KATHE TODD-BROWN AND BRIAN WHITEHEAD - Soil Ontology & Informatics
- JOSEPH GUM - Sustainable Data Management
- DAVE JONES, YUHAN (DOUGLAS) RAO, AND TIM BAILEY - Wildfire



COMMUNITY FELLOWS

*Each year, an outstanding group of early career researchers working on their graduate and post-doctoral studies supports different ESIP Collaboration Areas. Here are the 2025 Community Fellows.*

- BOLÍVAR APONTE ROLÓN, IOWA STATE UNIVERSITY - Data Stewardship Committee
- DEBASISH MISHRA, TEXAS A&M - Soil Ontologies & Informatics Cluster
- KESONDRA KEY, INDIANA UNIVERSITY - BLOOMINGTON - EnviroSensing Cluster
- KEENAN GANZ, UNIVERSITY OF WASHINGTON - Information Technology & Interoperability Committee
- JOSEPH LANE, UNIVERSITY OF MEMPHIS - Physical Sample Curation Cluster
- WALID OUARET, UNIVERSITY OF MARYLAND - Open Science Cluster
- JEIL OH, UNIVERSITY OF TEXAS AT AUSTIN - Disaster Lifecycle Cluster
- NELOFAR QULIZADA, UNIVERSITY OF ARKANSAS - Marine Data Cluster
- KELSEY HUELSMAN, UNIVERSITY OF VIRGINIA / USGS - Biological Data Standards Cluster
- JAYCEE CHOI, TUFTS UNIVERSITY / THE JACKSON LABORATORY - Sustainable Data Management Cluster

# NOTE FROM THE INTERIM EXECUTIVE DIRECTOR

2025 has been a tumultuous year for ESIP, but the overarching theme has been resilience. As data professionals, we naturally focus on the resilience of data and infrastructure, but what has stood out to me is the resilience of people.

Many individual ESIP members have lost jobs, funding, or mandates. I'm grateful they remain engaged in ESIP. We want to support them how we can because ESIP remains focused on its mission to "empower the use and stewardship of data" while adapting to a changing environment.

I was fortunate to begin my short tenure as ESIP's director at the July Meeting. Attendance was down, because virtually no civil servants were allowed to attend, but there was a "can do" spirit in the air. We were sad to see Susan Shingledecker step down as director but grateful for her five years of service, leaving ESIP strong and prepared for the moment. It was at this meeting that I first noticed the theme of resilience. It was embedded in a dedicated program track and threaded throughout the sessions. Brianna Pagán set the tone with her personal, powerful, and heartfelt plenary talk. In recounting the loss of her home and environment in the Palisades Fire, she described in detail the gaps in data availability that hampered the response and what we must do to bridge those gaps. She memorably said, "Technology failed me—my community did not."

But resilience is not just about having data available in the moment. A vast, complex, socio-technical infrastructure underpins nearly all Earth science data products, and the fragility of that infrastructure has been laid bare. ESIP has always recognized that resilience means more than reacting to crises. It involves preparation, prevention, robustness, and adaptation. We see this in the work of the Collaboration Areas working on stewardship and sustainable data as well as the technical details of machine learning and cloud computing, the human dimensions of communication, the domain-specific needs of oceans or wildfires, and much more.

In this period of transition, ESIP is also exploring new strategies and relationships. We are collaborating more with funders and data communities beyond Earth science. We are building new international partnerships and exploring innovative meeting formats to broaden ESIP's reach. People value ESIP's community-led, values-driven, and adaptive approach.

It has been a privilege to serve in this interim role, and I am confident the next director will continue strengthening ESIP as a robust, meaningful community. In this time of turmoil and transition, it has become clear that the most adaptive and resilient part of the entire system is people.

Our work continues throughout the year in ESIP's Collaboration Areas and the ESIP Lab. I invite you to join us.



**Mark A. Parsons**  
ESIP Interim Executive Director

## JOIN US

ESIP welcomes ideas, partnerships, and support from the global community of organizations and individuals who share our vision of being data stewardship leaders.

### LEARN MORE



Network



Collaboration Areas



ESIP Lab

### SEND FEEDBACK

We welcome community feedback at any time. Please send a note to us at [staff@esipfed.org](mailto:staff@esipfed.org).

### STAY CONNECTED



YouTube



LinkedIn



Bluesky



Figshare



Zenodo



Github



ESIP Update

### CONTRIBUTE

If you would like to make a financial contribution to support the work of ESIP, please send your contribution by mail to the address: ESIP • 574E Ritchie Hwy #248 • Severna Park, MD 21146 • [staff@esipfed.org](mailto:staff@esipfed.org)

### COVER PAGE

Skies ablaze, North Dakota | NOAA - Jeremy Bower