

# From Objects to the Art Market

*A data model for provenance research at the Royal Museums of Fine Arts of Belgium, 1933–1960*

Alexandre Leroux  
Fenya Almstadt

# Introduction

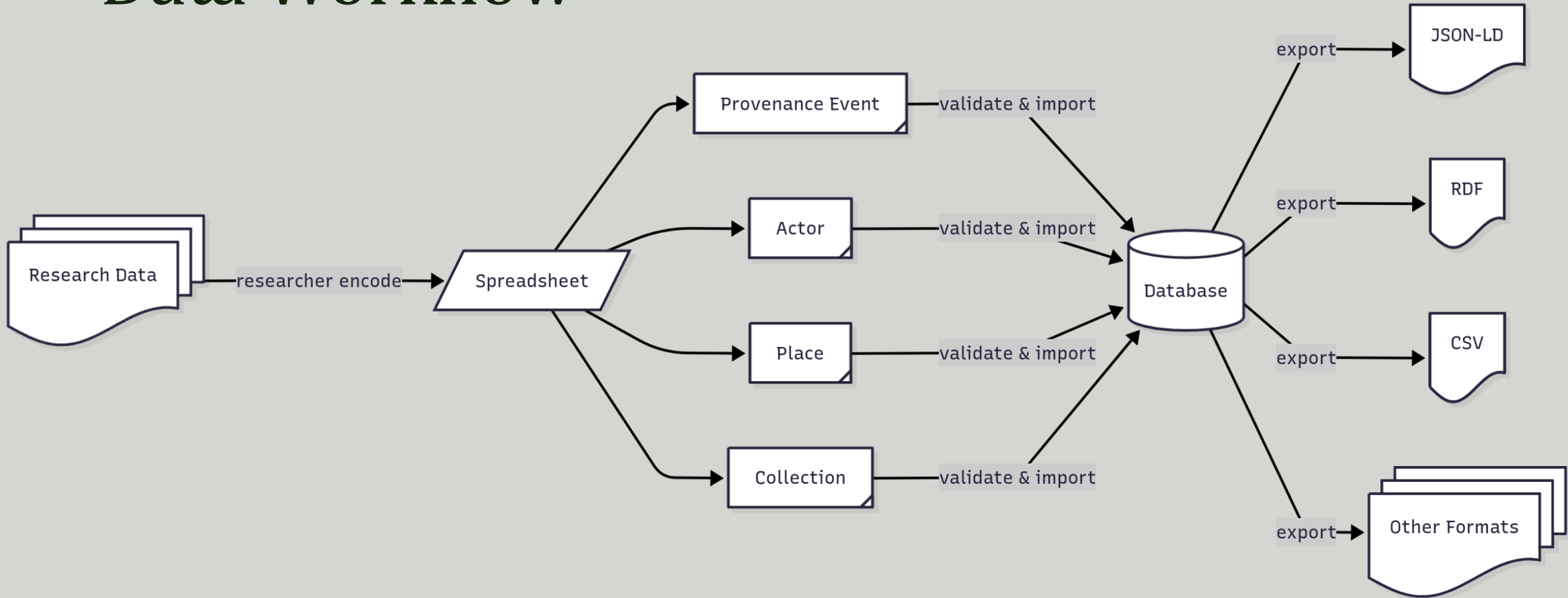


Royal Museums of Fine Arts of Belgium, new shelter for paintings, 1940-1945.  
© CC BY KIK-IRPA, Brussels, B129263.

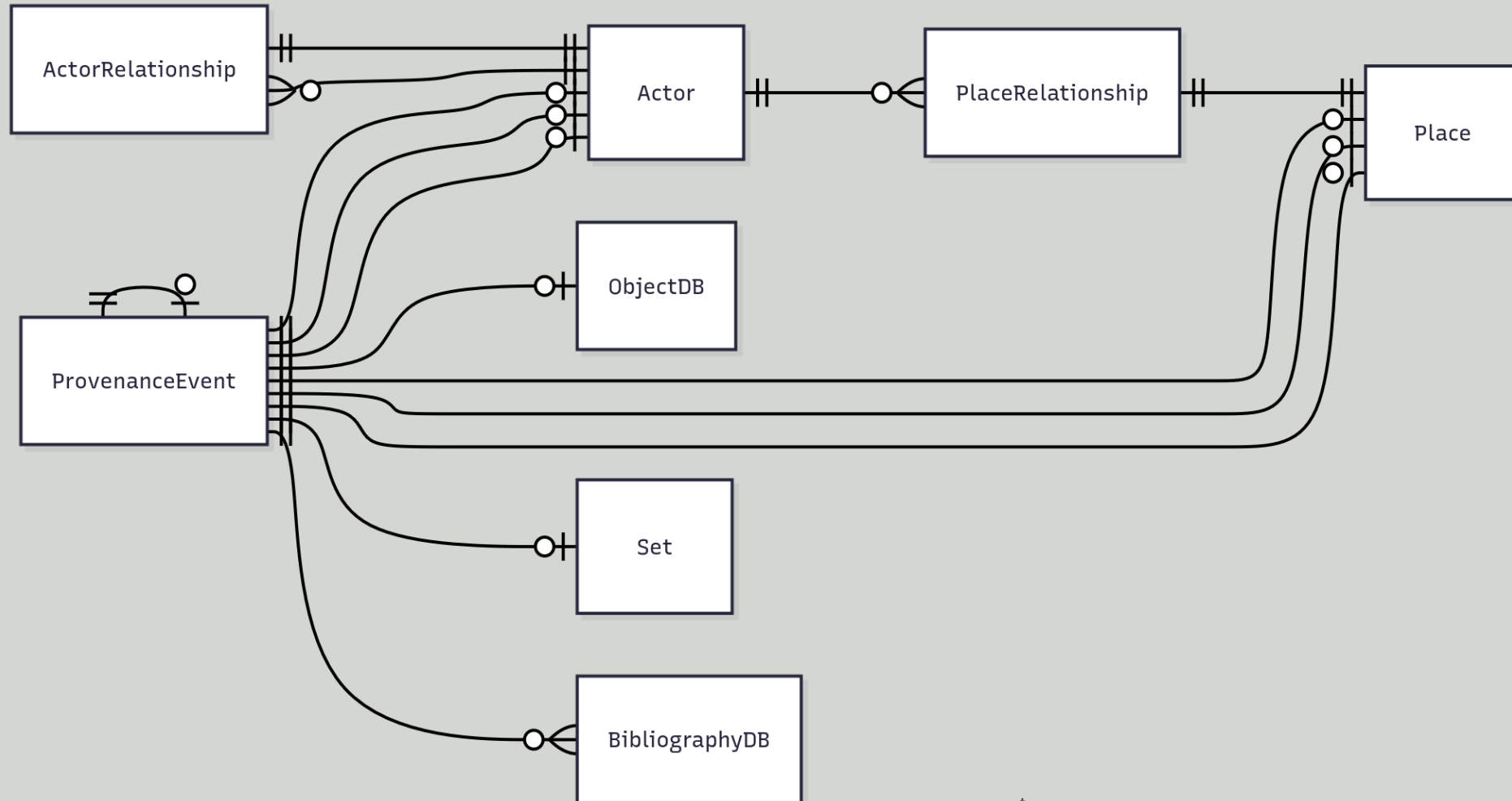
# Data Model

- Findable, Accessible, Interoperable, Reusable (FAIR)
- Linked Open Data (LOD)
- Core Model: CIDOC-CRM > Linked.art
- Extensions when required
- Prioritize Getty Vocabularies
- Model Definition & Doc: LinkML - <https://linkml.io>

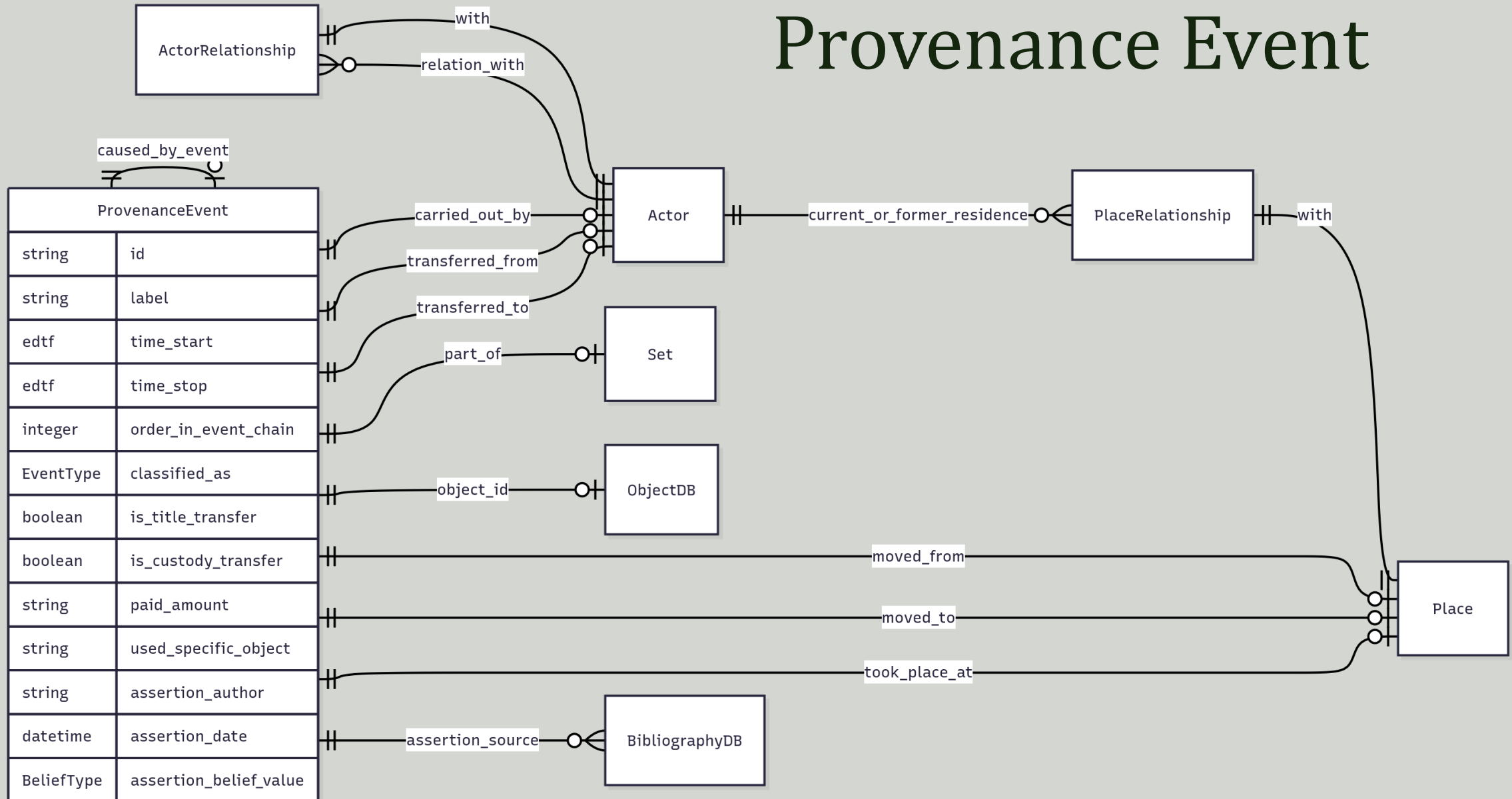
# Data Workflow



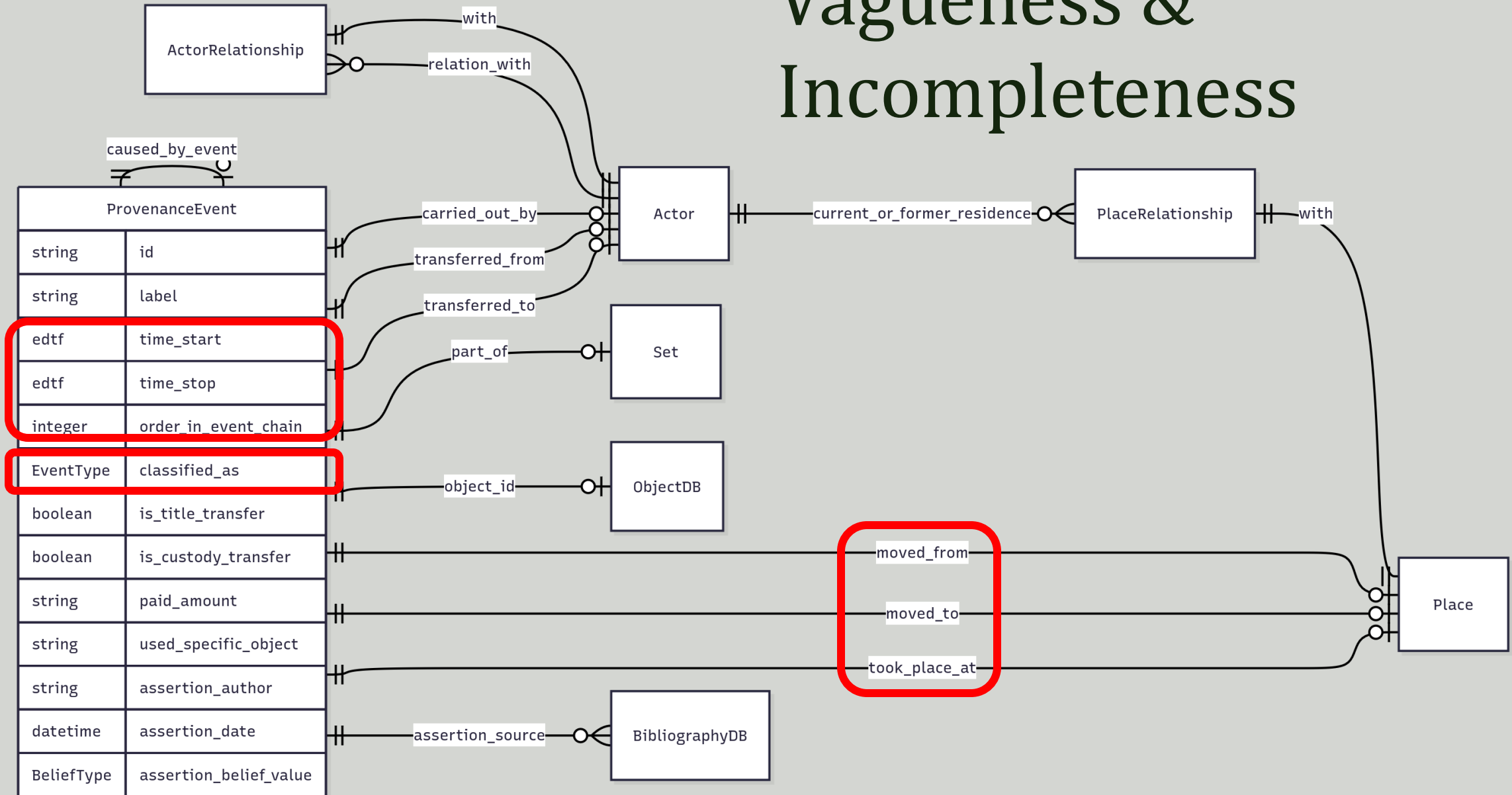
# Data Model – Entity Relation Diagram



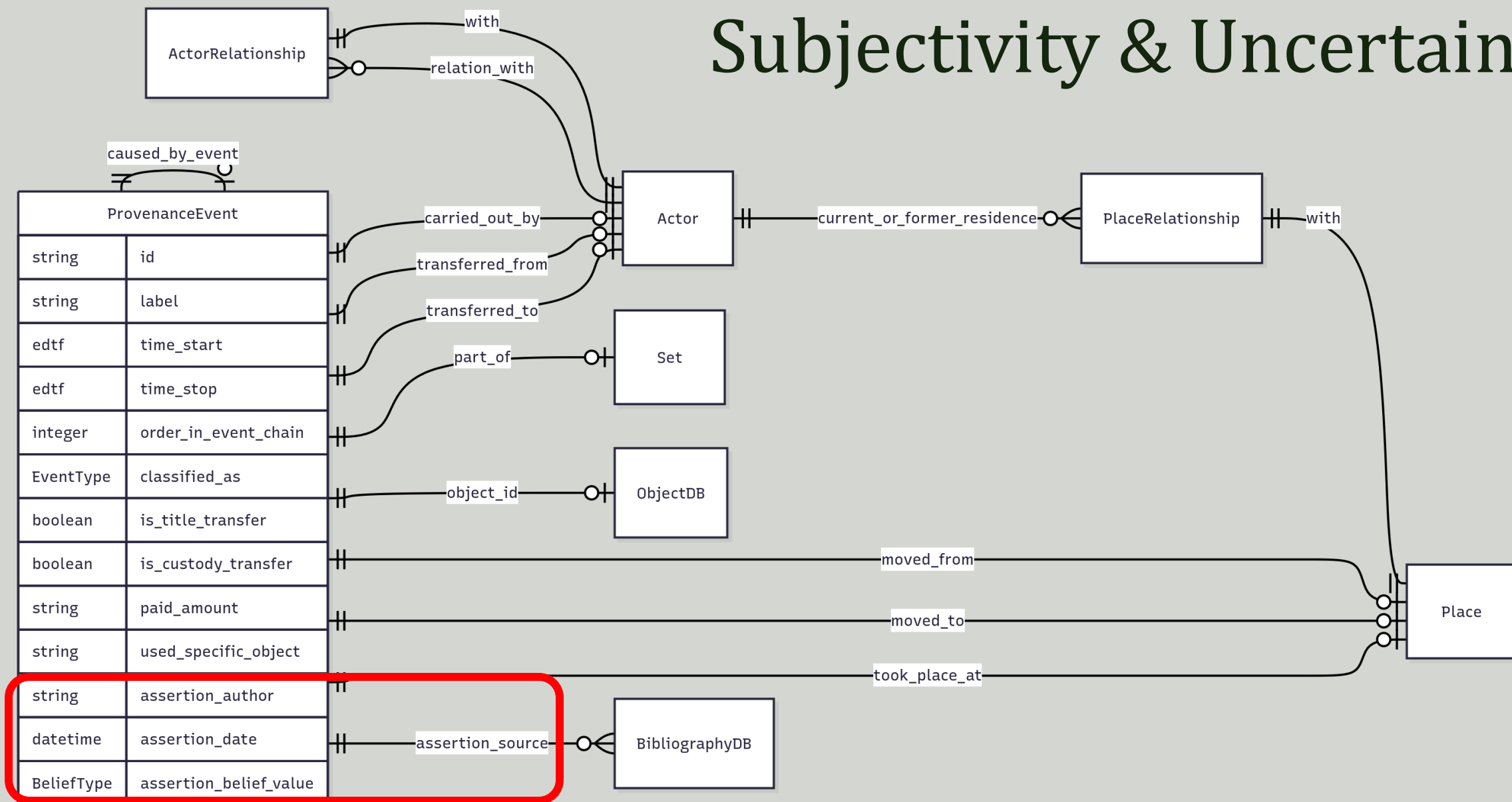
# Provenance Event



# Vagueness & Incompleteness



# Subjectivity & Uncertainty





# Inv. 5025

Henri De Braekeleer (1840-1888)

*Intérieur de la chapelle du Saint-Sacrement à  
l'église Saint-Jacques à Anvers*

Oil on canvas

85,5 x 100 cm

Signed and dated 1864

Collections of the Royal Museums of Fine Arts of  
Belgium

“An important painting by De  
Braekeleer has just been found, one  
that had been lost for sixty years.”

*L'Eventail Bruxelles* 13.1.1935



Royal Museums of Fine Arts of Belgium, Brussels, inv. 5025 / photo : J. Van Seghbroeck.

# Provenance – inv. 5025

- Coll. Ernest Gambart, London [?];
- [provenance gap];
- Coll. Strusberg, Berlin [before 1934];
- Unknown coll., Berlin (acquired from the Coll. Strusberg) [?-1934];
- Internationales Kunst- und Auktionshaus, Berlin, lot 447, sold to an unknown art dealer in Germany [16/10/1934];
- Sold by an unknown art dealer from Germany to N. A. Groen, Woluwe Saint Pierre/Brussels [1934];
- Sold by N.A. Groen, via the intermediary Georges Le Roy, Brussels to the Société des Amis des Musées Royaux de l'Etat, Brussels [1935];
- Donated by the Amis des Musées to the RMFAB in memory of Paul de Mot [21/2/1935]



Royal Museums of Fine Arts of Belgium, Brussels, inv. 5025 / photo : J. Van Seghbroeck.

# View of the dataset – inv. 5025

event	object	label	classified_as	belief_value	time_start	time_stop	transferred_from	transferred_to
0	005025	Creation of "Intérieur de la chapelle du Saint-Sacrement à l'église Saint-Jacques à Anvers"	Creation	true		1864		
1	005025	Salon d'Anvers 1864, cat. 217 (no provenance given)	Exhibition	probably				
2	005025	Collection Ernest Gambart, London	Part of	probably				
3	005025		Gap	possibly				
4	005025	Collection Strusberg, Berlin	Part of	probably		1934		Collection Strusberg
5	005025	unknown collection, Berlin (acquired from the collection Internationales Kunst- und Auktionshaus, Berlin W62, lot 447)	Sale	possibly	1934		Collection Strusberg (?)	unknown estate, Berlin
6	005025	Sold by an unknown art dealer, Germany to N. A. Groen	Auction	probably	1934-10-16	1934-10-16	unknown estate, Berlin	unknown art dealer, Germany
7	005025	Sold by N.A. Groen, 12 Boulevard Brand Whitlock, Woluwe Saint Pierre/Brussels via the intermediary Georges Le Roy, Brussels to the Société des Amis des Musées Royaux de l'Etat, Brussels	Sale	probably	1934	1934	unknown art dealer, Germany	N. A. Groen, 12 Boulevard Brand Whitlock, Woluwe Saint Pierre/Brussels via the intermediary Georges Le Roy, Brussels to the Société des Amis des Musées Royaux de l'Etat, Brussels
8	005025	Donated by Société des Amis des Musées Royaux de l'Etat, Brussels	Donation	true	1935	1935	N. A. Groen	Société des Amis des Musées Royaux de l'Etat, Brussels
9	005025	Coll. RMFAB	Part of	true		1935-02-21	Société des Amis des Musées Royaux de l'Etat, Brussels	RMFAB
10	005025				1935-02-21	ongoing		

Extract from the ProvEnhance event table, inv. 5025.

# Contact Information

**The ProvEnhance Project:** <https://fine-arts-museum.be/en/research/research-projects/provenhance>

**Alexandre Leroux** (Data Scientist, [alexandre.leroux@fine-arts-museum.be](mailto:alexandre.leroux@fine-arts-museum.be))  
“Data management, data enrichment & data analysis”

**Fenya Almstadt** (PhD, [fenya.almstadt@fine-arts-museum.be](mailto:fenya.almstadt@fine-arts-museum.be))  
“Enhancing provenance research: acquisitions of the Royal Museums of Fine Arts of Belgium 1933–1960”

**Eléa De Winter** (PhD, [elea.de.winter@ulb.be](mailto:elea.de.winter@ulb.be))  
“The Belgian art market in the pre-, war and post-war period 1933–1960”