

# Preparing, curating and describing qualitative research data – the RDC Qualiservice approach

**Kati Mozygemba, Susanna Prepeliczay, Noemi Betancort Cabrera**

*International Secure Data Facility Professionals Network (ISDFPN)*

*10th September 2025, online*

*DOI: 10.5281/zenodo.17533208*

# Overview

The RDC Qualiservice: social science disciplines and types of research data

## **Focus workflow of data preparation, curation and archiving:**

Part 1 – Cooperative preparation of research data (legal base IC, contextualisation, anonymisation)

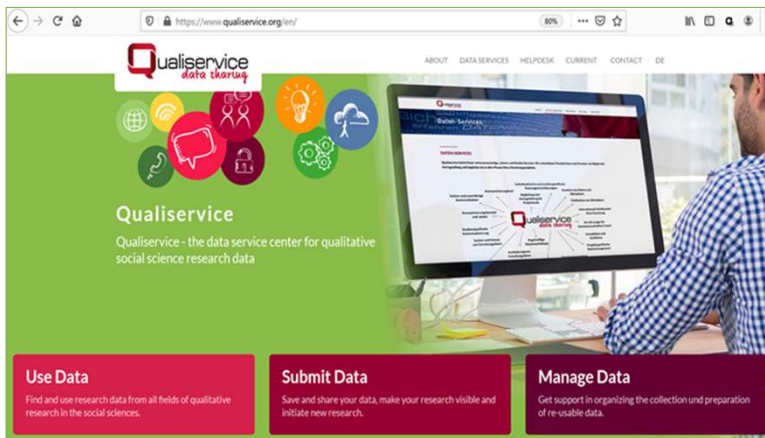
Part 2 – Data submission process (agreement)

Part 3 – Curation process in the Safe Center

Part 4 – Metadata (model, cataloguing, output)

Part 5 – Data archiving

# The Research Data Center (RDC)

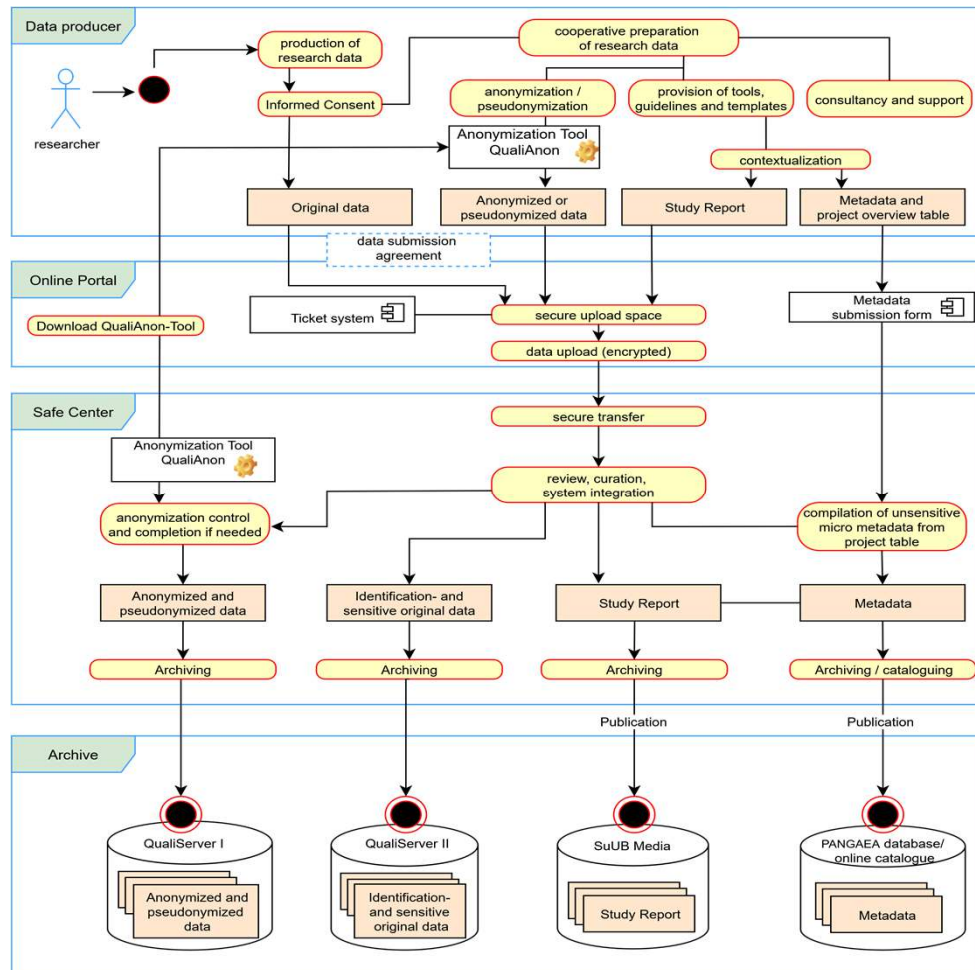


<https://www.qualiservice.org/en/>

- RDC for all kinds of qualitative research materials (i.e., research data & context materials) in the social & behavioral sciences
- This includes e.g. interview transcripts, observation protocols, field notes, images/photos, audiovisual data etc.
- Located at the University of Bremen; Germany, head: Prof. Dr. Betina Hollstein
- Accredited by the German Data Forum (RatSWD); member of KonsortSWD-NFDI4Society within the National Research Data Infrastructure (NFDI)

→ Focus on “sensitive” (e.g., personal) data and the related ethical, legal, professional, and technical requirements

# Workflow for data preparation and data curation at

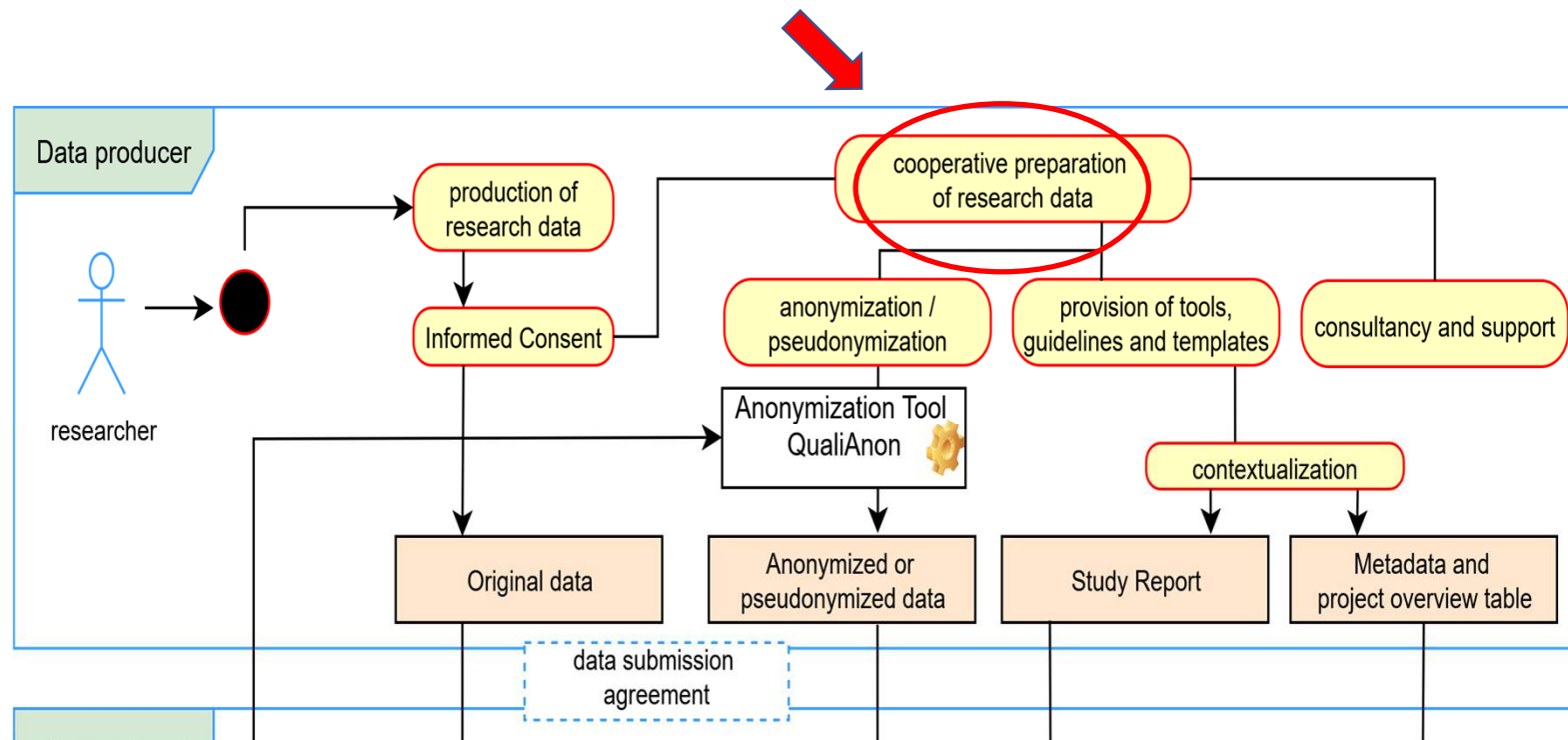


## Central characteristics – Research Friendliness:

- Close cooperation between researchers and RDC during the whole process
- RDC staff is experienced in qualitative research
- Offer flexibility for different research data types or project specific requirements
- Further development of workflow(s) in cooperation with researchers from different disciplines (use studies)

# Workflow for data preparation and data curation at

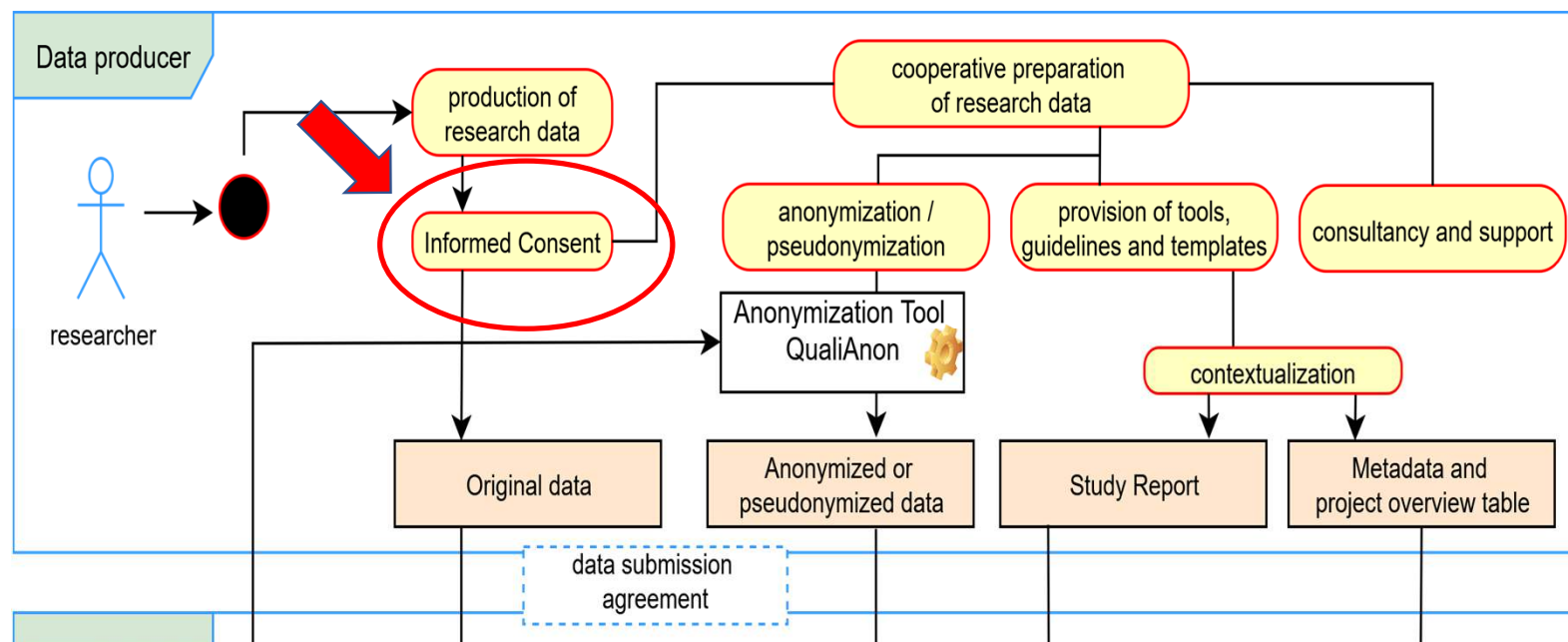
## Part 1 – „Cooperative Data Preparation“



## Workflow Part 1 – „Cooperative Data Preparation“

- Takes place during the research process, outside the RDC
- Qualiservice supports researchers throughout the entire research project in the steps that are important for data sharing, from the application stage onwards,
- The aim is to integrate data preparation into the research project
  - Create synergies (e.g. with regard to documentation)
  - Prevent a backlog of tasks at the end of the project
  - Find the best solution for the project: taking into account content-related aspects, research ethics and data protection aspects, while maximizing reuse value
- Includes consultation and support of researchers with a focus on project-specific data sharing requirements
- Collaboration in designing the data set(s)
- providing handouts and tools
- Consult the completing of the data transfer agreement (prerequisite for transfer to the RDC)

## Workflow Part 1 – „Cooperative Data Preparation“



# Workflow Part 1 – „Cooperative Data Preparation“

## Supporting Informed Consent

- Qualiservice supports researchers in preparing informed consent,
- provides legally verified templates for primary research, archiving and data sharing
- as well as information on practices of informed consent and alternatives to it.

IC-Template for primary research



Qualiservice  
data sharing

Alternatives to written  
Informed Consent

IC-Template for data  
sharing



*Elisabeth Huber & Sabine Imeri*

**Informed consent in ethnographic research:  
A common practice facing new challenges**

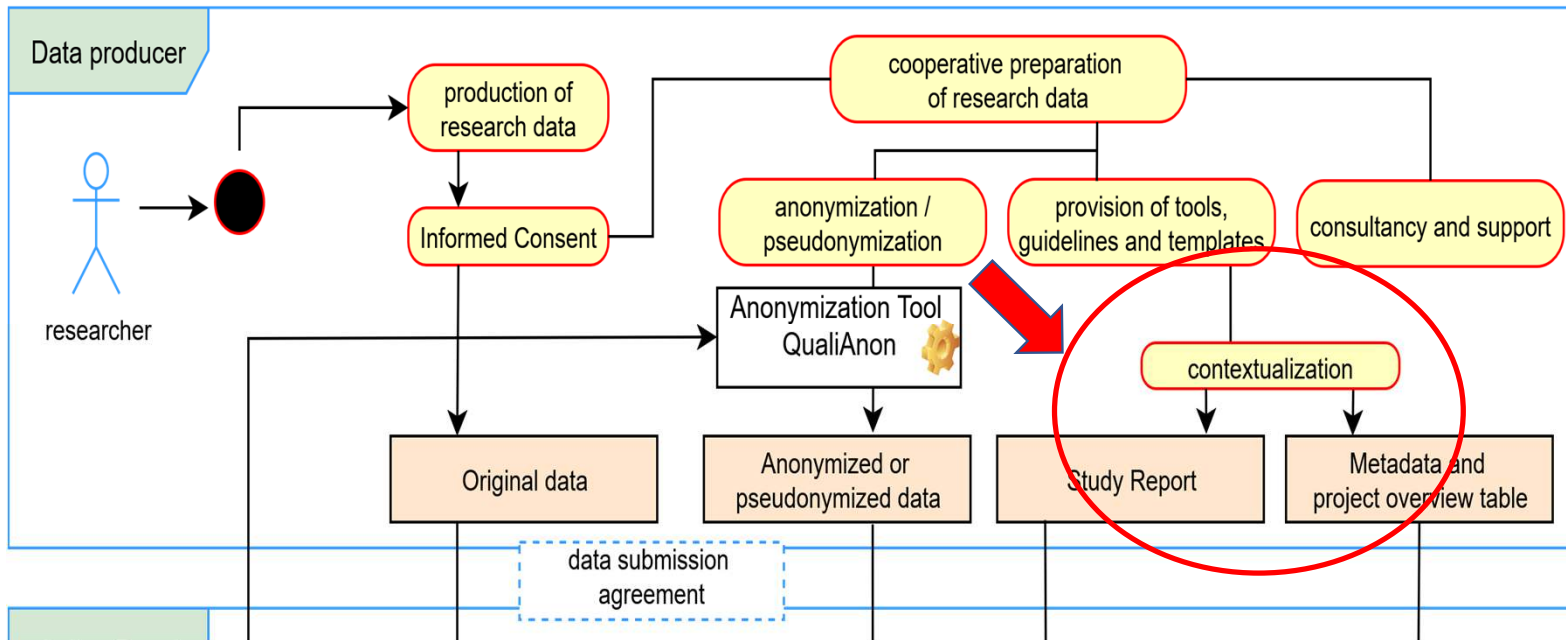
University of Bremen – Qualiservice Working Papers  
**QS-WP-4-2021**

<http://dx.doi.org/10.26092/elib/1070>





## Workflow Part 1 – „Cooperative Data Preparation“



# Workflow Part 1 – „Cooperative Data Preparation“ Supporting Contextualization

- Contextualisation is one key requirement for the reuse of qualitative data.
- Data sets are contextualised with materials of varying sensitivity and these materials are accessible to varying degrees.
- During the project, researchers compile a study report (as a condition for archiving), which is published (DOI)
- The study report serves together with the metadata as a showcase for the data to the outside world.

In translation - Pre-registered doi:  
<http://dx.doi.org/10.26092/elib/166>

Jan-Ocko Heuer, Susanne Kretzer, Kati Mozygemba,  
Elisabeth Huber, and Betina Hollstein

Contextualization of qualitative research data  
for secondary reuse — a guide  
for researchers on the preparation  
of a study report

Qualiservice, University of Bremen  
Translation of the Qualiservice Working Paper QS-WP-1-2020,  
<http://dx.doi.org/10.26092/elib/166>, status: 2020

**Citation:** Brooks, Anne-Katrin (2021): Mangroves and Meaning-Making: A mutual relationship over time? Transect Walks transcripts [dataset]. Qualiservice, PANGAEA, <https://doi.org/10.1594/PANGAEA.930180>

Always quote citation above when using data! You can download the citation in several formats below.

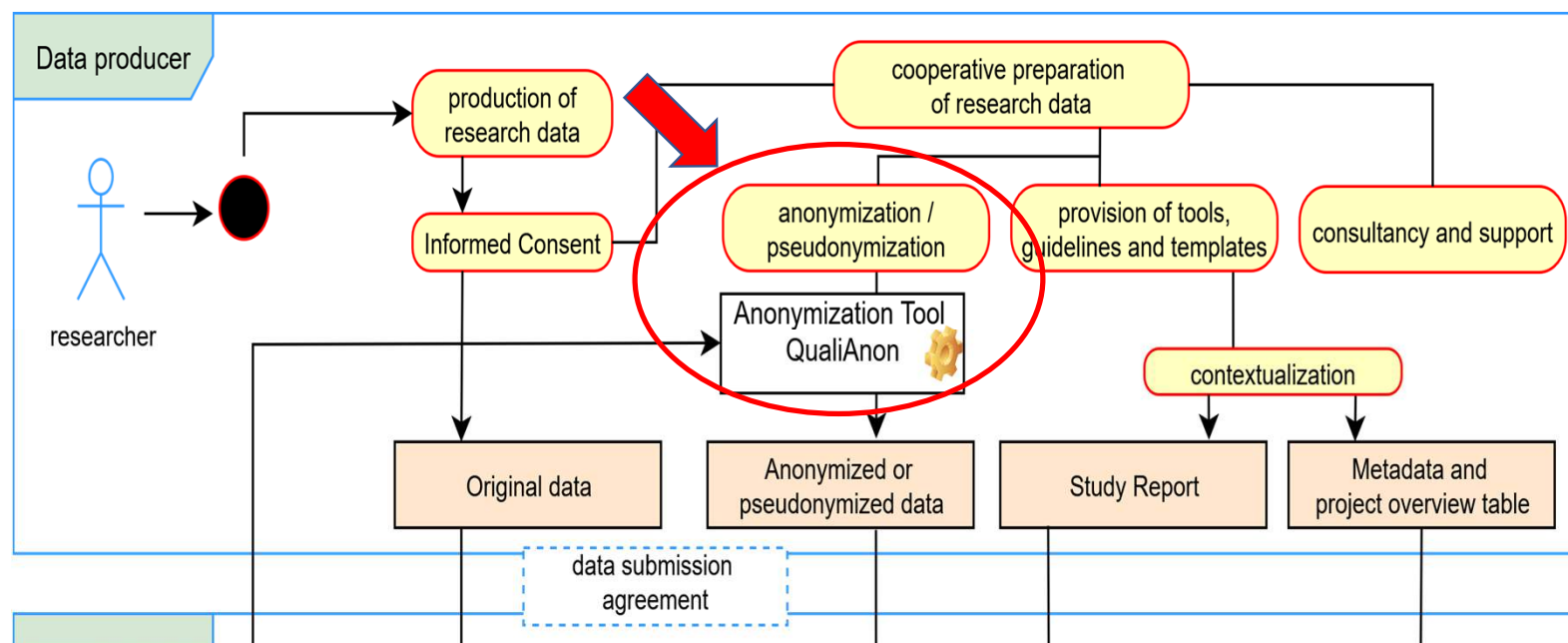
Published: 2021-04-09 • DOI registered: 2021-09-21

[RIS Citation](#) [BIBTeX Citation](#) [Copy Citation](#) [Share](#) [206](#) [63](#) [10](#)

**Abstract:** EN: Transcription of Transect Walks through the mangrove user communities and a science institution engaged in mangrove use. Developed in the context of Rapid Rural Appraisal methods for quick data gathering in community development (Chambers 2012, Pelto 2016:77), the method comprises of a systematical walk through the sample area accompanied by one or more knowledgeable people of the zone (Mukherjee 1997:52). Every object of interest was discussed and explained.  
ES: Transcripciones de Transect Walks en los comunidades usando los manglares y una institución científica dedicado en el uso de los manglares. Desarrollado en el contexto de Rap Rural Appraisal methods por ganar datos rapidamente en el desarrollo de comunidades (Chambers 2012, Pelto 2016: 77), este metodo comprende de un camino sistemático por la área de investigación, acompañado por una o mas personas informados de la región (Mukherjee 1997: 52). Cada objeto de interés fue discutido y explicado.

**Study report:** Brooks, Anne-Katrin (2021): Mangroves and Meaning-Making: A mutual relationship over time? Ethnographic Data. Study Report. Universität Bremen, 17 pp, <https://doi.org/10.26092/ELIB/1071>

## Workflow Part 1 – „Cooperative Data Preparation“



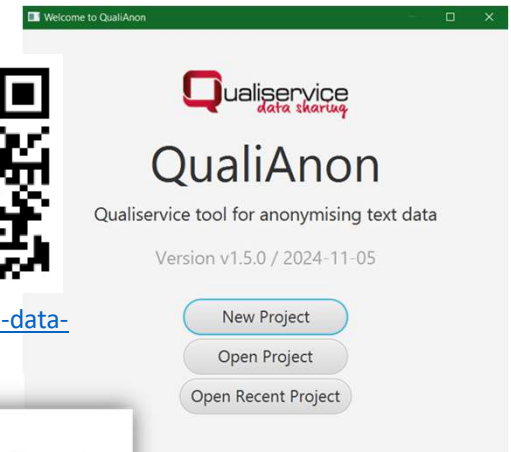
# Workflow Part 1 – „Cooperative Data Preparation“

## Flexible Anonymisation

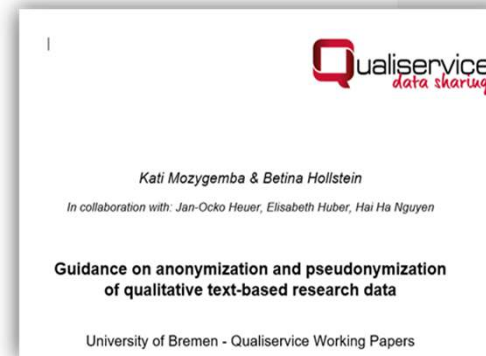
- Qualiservice supports researchers in developing an anonymization concept aiming at keeping the greatest possible re-use value and at the same time protecting individual rights.
- Allows for variously abstracted replacement codes that can be opened and closed depending on the intended use (e.g. onsite or use in teaching)
- The concept is the basis for the QualiAnon-tool (open source) for the anonymisation or pseudonymisation of text data, which is data protection-compliant and developed together with researchers.
- Differentiated replacement schemes and differently abstracted export versions of a text can be created and shared.



<https://github.com/pangaea-data-publisher/qualianon>



<https://www.qualiservice.org/en/the-helpdesk/tools.html>

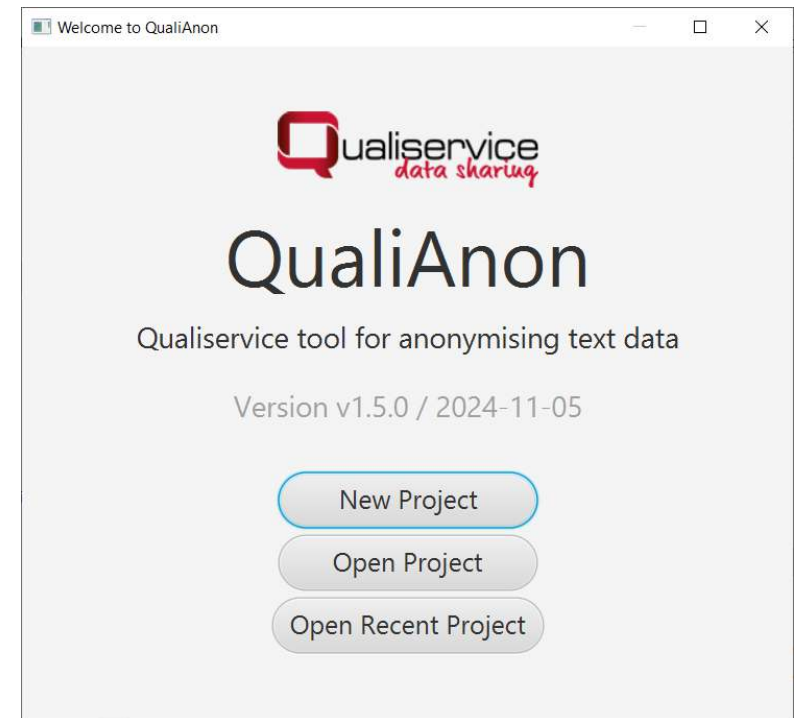


German Version: <https://doi.org/10.26092/elib/2525>

English Version : <https://doi.org/10.26092/elib/4029> (pre-registered)

# Tool for the anonymization of text data

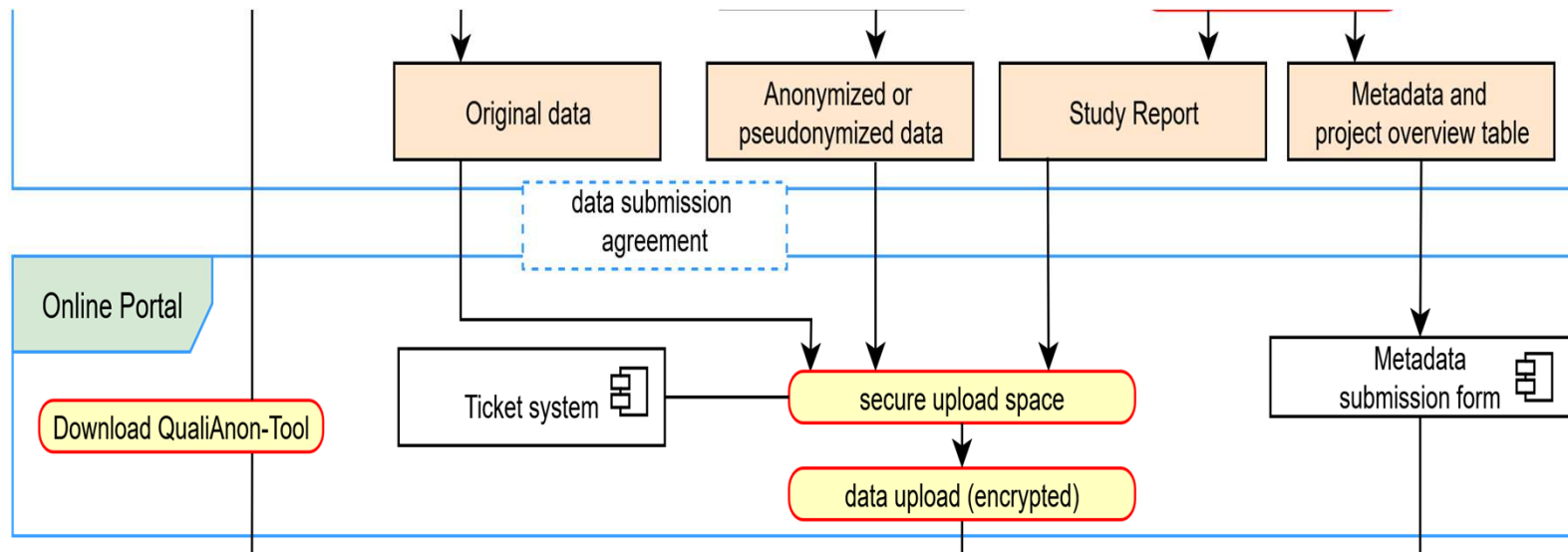
- Marking and replacing sensitive information
- Semi-automatic; control by user(s)
- Documentation of replacements
- Option to use external classification-schemas for replacement
- When exporting: selection of the degree of abstraction
- Separate storage of the respective files
- Creating, sharing and reusing replacement lists
- Open source



Reference: Tom Nicolai, Kati Mozygemba, Susanne Kretzer, Betina Hollstein, Egor Gordeev (2025): QualiAnon - Qualiservice tool for anonymizing text data (version 1.5.0). Qualiservice. University of Bremen. Software available at: <https://github.com/pangaea-data-publisher/qualianon>

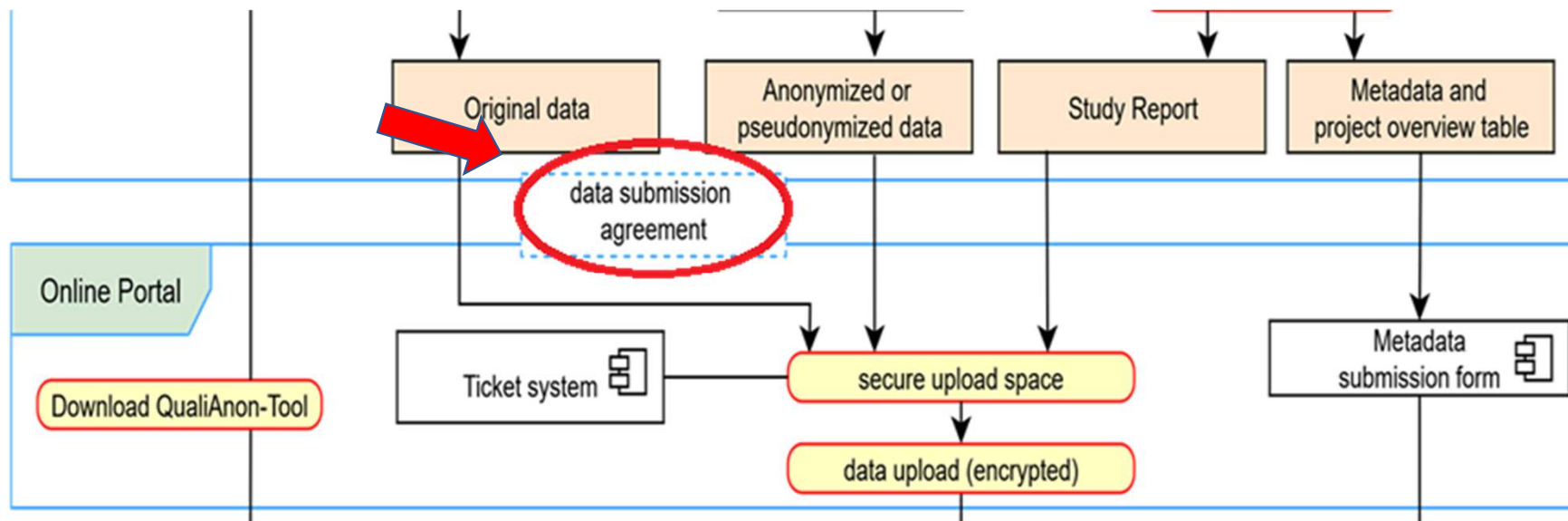
# Workflow for data preparation and data curation at Qualiservice data sharing

## Part 2 – Data submission to RDC



# Workflow for data preparation and data curation at

## Part 2 – Data submission to RDC



Workflow for data preparation and data curation at  Qualiservice  
data sharing

## Part 2 – Data submission based on agreement with data providers

Comprises conditions for data usage rights and scientific re-use

**Individual reuse conditions** for each dataset defined by primary researchers (data providers):

e.g. different purposes (research/secondary analyses vs. academic teaching)

→ Scientific Use File (SUF) and/or Campus Use File (CUF) with different levels of anonymization

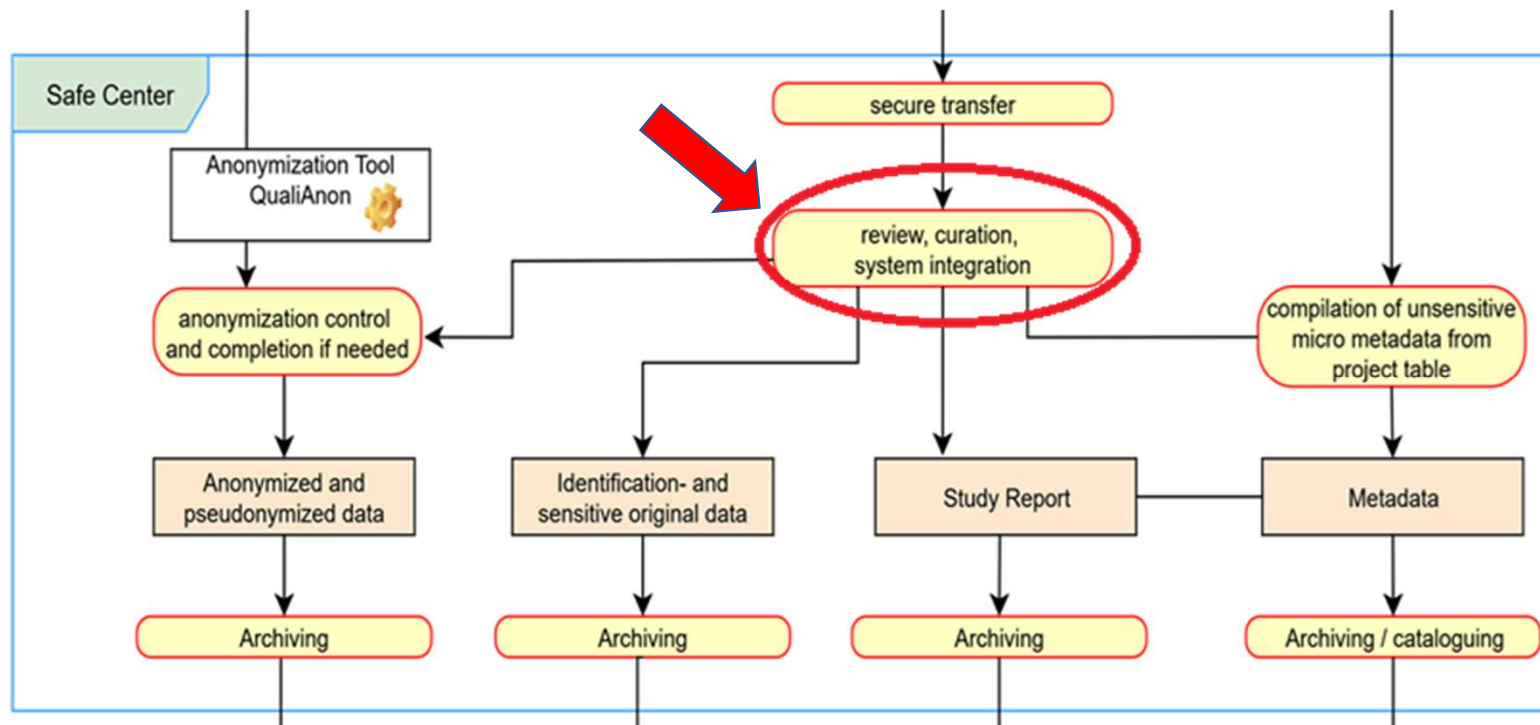
- Define scope of authorized citations (e.g. length; paraphrasing)
- E.g., embargo periods (until project publications finalised; time span protecting interviewees)
- Re-use with/out approval by data providers or information to data providers
- Onsite-Use for sensible documents (transcripts, videos etc.) at Bremen University
- Time-limited periods of scientific re-use related to specific purpose (research or teaching)
- Usage agreement annexed to data submission agreement

→ → **Secure transfer** of (anonymized/pseudonymized) research data via protected upload space



# Workflow for data preparation and data curation at Qualiservice data sharing

## Part 3 – Curation process in the Safe Center



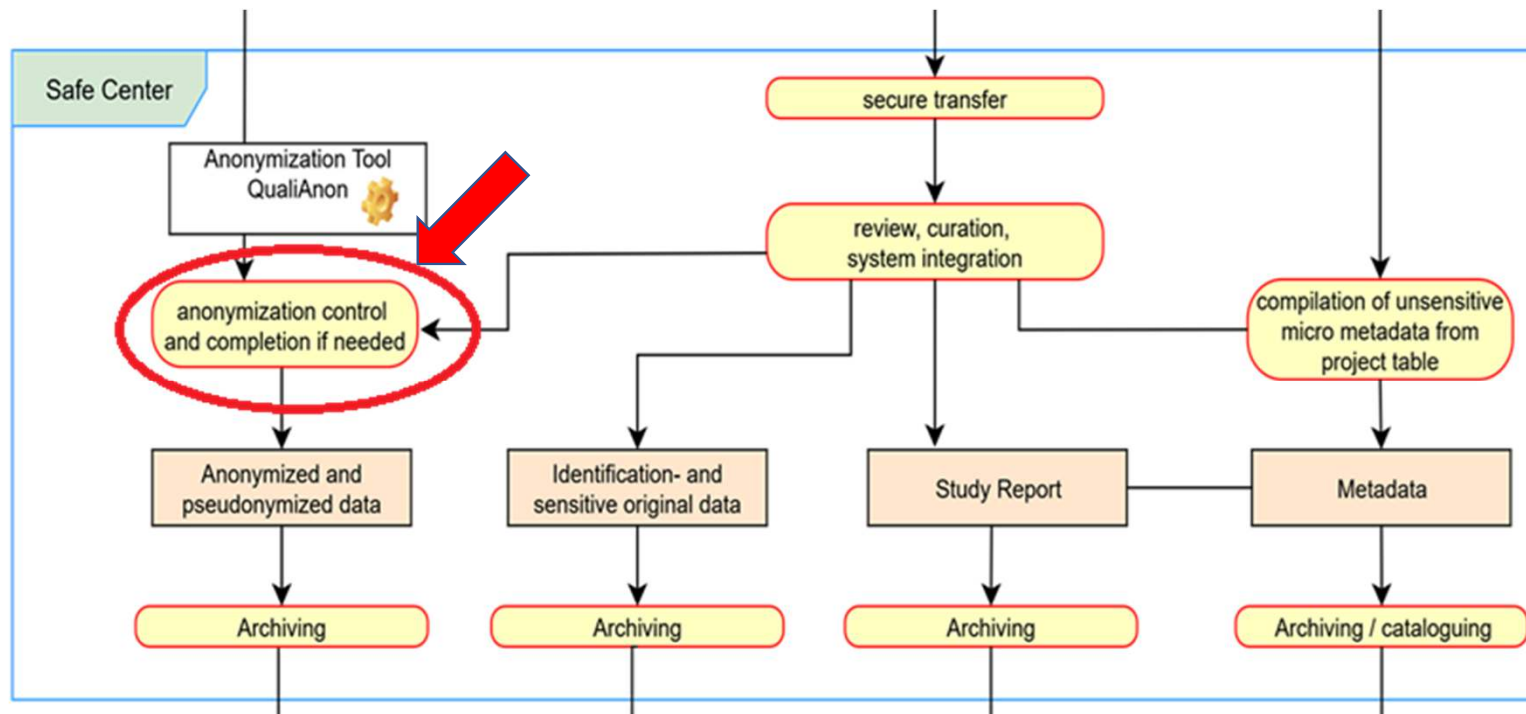
## Part 3 – Review and Curation process in Safe Center

- Transfer of research data and materials to internal drive in the Safe Center
- Completeness checks & sorting of files into curation directories; technical functionality checks
- Review of context materials: study report, interview guidelines, vignettes, other materials
- Check of information about files and sample properties provided in project overview table

[illegible][illegible]

# Workflow for data preparation and data curation at

## Part 3 – Curation process in the Safe Center



# Workflow for data preparation and data curation at

## Part 3 – Curation process in the Safe Center

### **Control of anonymization by domain experts**

- Anonymization concept delivered by data providers → methodic basis, rules
- Use of QualiAnon anonymization tool → reading of transcripts word by word
- Completion of replacements where necessary
- Documentation of all changes in table overview (place of origin/file/row, identified problem or question(s), applied solution, name(s) of curator(s))
- AI Chatbot tool with instructions for curators : currently in implementation

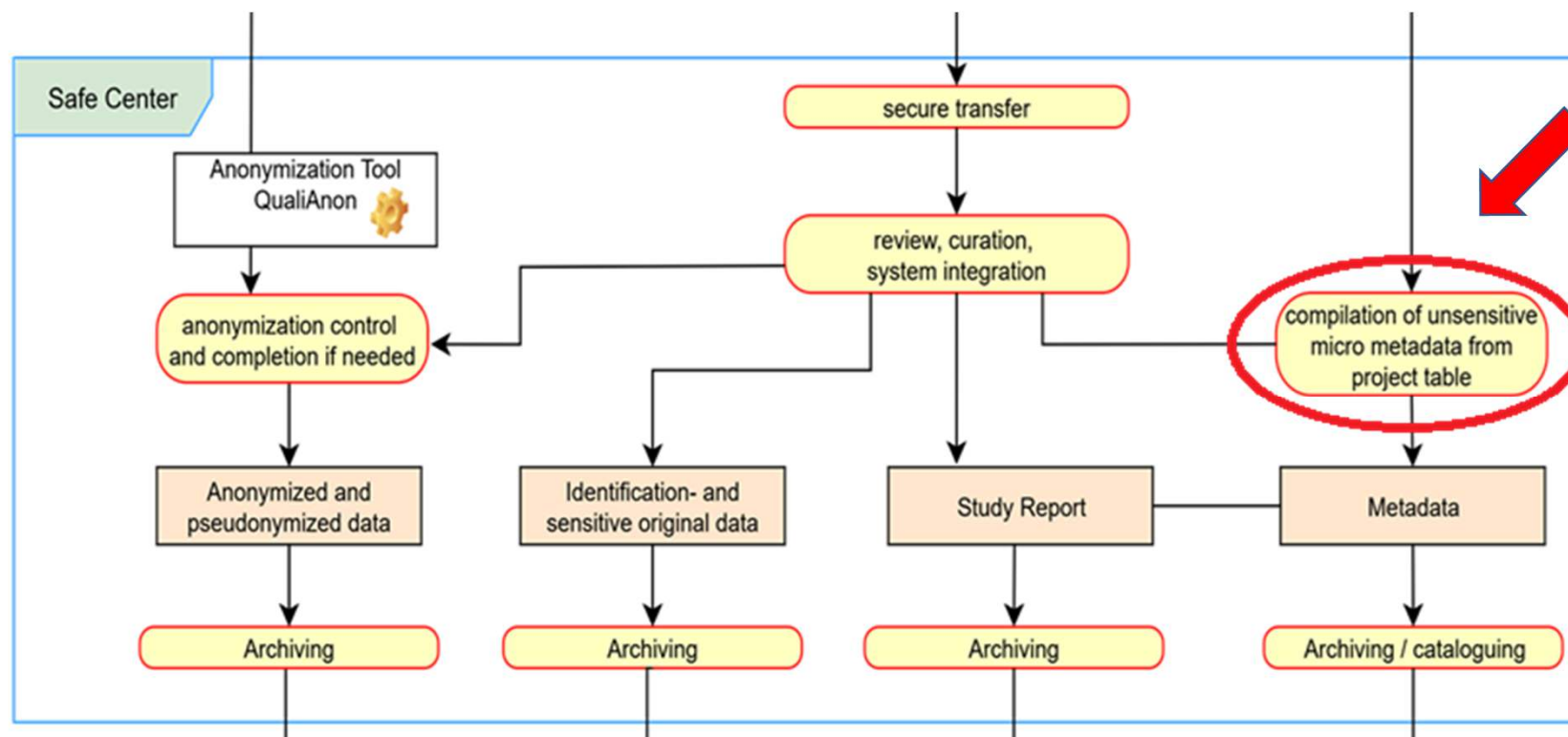
### **Feedback process with data providers**

- Different degrees of anonymization → selection of files for SUF and CUF
- Materials that cannot be anonymized sufficiently to warrant protection of participants without too much loss of scientific relevant information → Onsite use

# Workflow for data preparation and data curation at



## Part 3 – Curation process in Safe center



Workflow for data preparation and data curation at  Qualiservice data sharing

## Teil 3 – Curation process in Safe center: compilation of micro-metadata

Sample properties																
Case	File name	Description			Event duration	Country	City	Region	Situation	Language	Gender	Age	Year of birth	Profession / Occupation	School degree	Marital status
		Case no.	Pseudonym	DC Date												



1	2	3	4	5	6	7	8	9	10	11	12	13	14
Data ID	File name	Data format	Language	DC date	DC Method	Participants No [#]	Source	Event duration	Case ID	Gender	Nation	Work field	Training grad
OASE_FGD-01	OASE_IT_01	Text	eng	2020-12	Focus Group Discussion	7	Workshop	PT2H5M18S	A1	male	Norway	Marine Science	Professor
OASE_FGD-01	OASE_IT_01	Text	eng	2020-12	Focus Group Discussion	7	Survey	PT2H5M18S	A2	female	Croatia	Marine Science	Postdoc
OASE_FGD-01	OASE_IT_01	Text	eng	2020-12	Focus Group Discussion	7	Survey	PT2H5M18S	A3	male	Slovenia	Economics	Postdoc
OASE_FGD-01	OASE_IT_01	Text	eng	2020-12	Focus Group Discussion	7	Survey	PT2H5M18S	A4	male	Scotland	Marine Science	Postdoc
OASE_FGD-01	OASE_IT_01	Text	eng	2020-12	Focus Group Discussion	7	Workshop	PT2H5M18S	A5	male	India	Infomation Science	Postdoc
OASE_FGD-01	OASE_IT_01	Text	eng	2020-12	Focus Group Discussion	7	Survey	PT2H5M18S	A6	male	India	Physics	Professor
OASE_FGD-01	OASE_IT_01	Text	eng	2020-12	Focus Group Discussion	7	Survey	PT2H5M18S	A7	male	Iran	Educational Science	Professor
OASE_FGD-02	OASE_IT_02	Text	eng	2020-12	Focus Group Discussion	8	Survey	PT2H32M56S	B1	male	Russia	Biology	Postdoc
OASE_FGD-02	OASE_IT_02	Text	eng	2020-12	Focus Group Discussion	8	Survey	PT2H32M56S	B2	male	Italy	Biology	Professor
OASE_FGD-02	OASE_IT_02	Text	eng	2020-12	Focus Group Discussion	8	Survey	PT2H32M56S	B3	male	Bahrain	Educational Science	Professor
OASE_FGD-02	OASE_IT_02	Text	eng	2020-12	Focus Group Discussion	8	Workshop	PT2H32M56S	B4	female	France	Sociology	PhD student
OASE_FGD-02	OASE_IT_02	Text	eng	2020-12	Focus Group Discussion	8	Survey	PT2H32M56S	B5	male	Nigeria	Educational Science	PhD student
OASE_FGD-02	OASE_IT_02	Text	eng	2020-12	Focus Group Discussion	8	Survey	PT2H32M56S	B6	male	Portugal	Geology	Professor



Univ  
Bremen

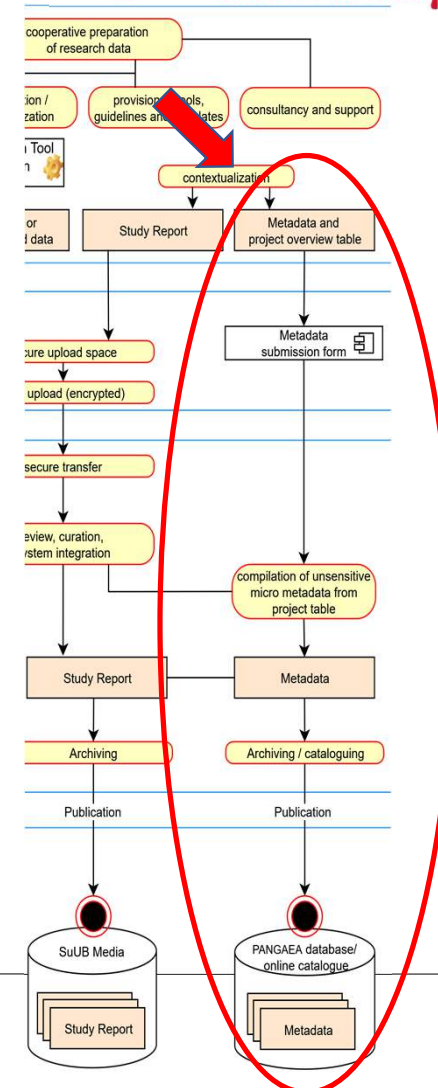
Bremen



# Workflow for data preparation and data curation at



## Part 4 – Metadata (model, cataloguing, output)

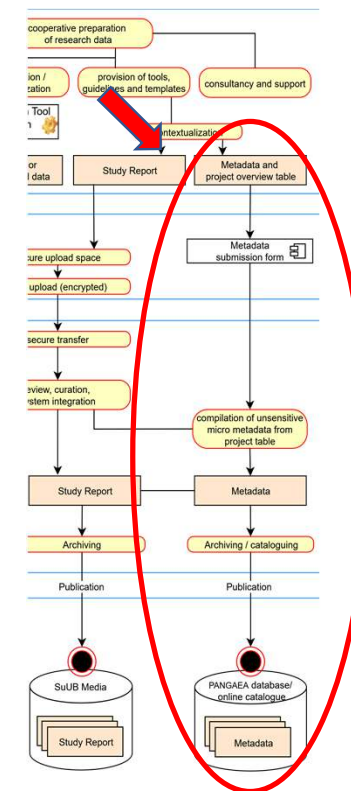


## Part 4 – Metadata

### The Qualiservice Metadata Model

Requirements by designing the Qualiservice metadata schema:

- (Inter)national standards und initiatives: DDI Specifications, DataCite, DCAT, REFI-QDA and QuDEx
- Recording of metadata: data creators know their data better (term suggestions and free text entries) + data curators record it homogeneously in the system
- Product: a machine-readable and FAIR version of the study and data description
- Project networks and collaborative research centres can be recorded as well as individual qualitative projects and various data types, waves of data collection and methods

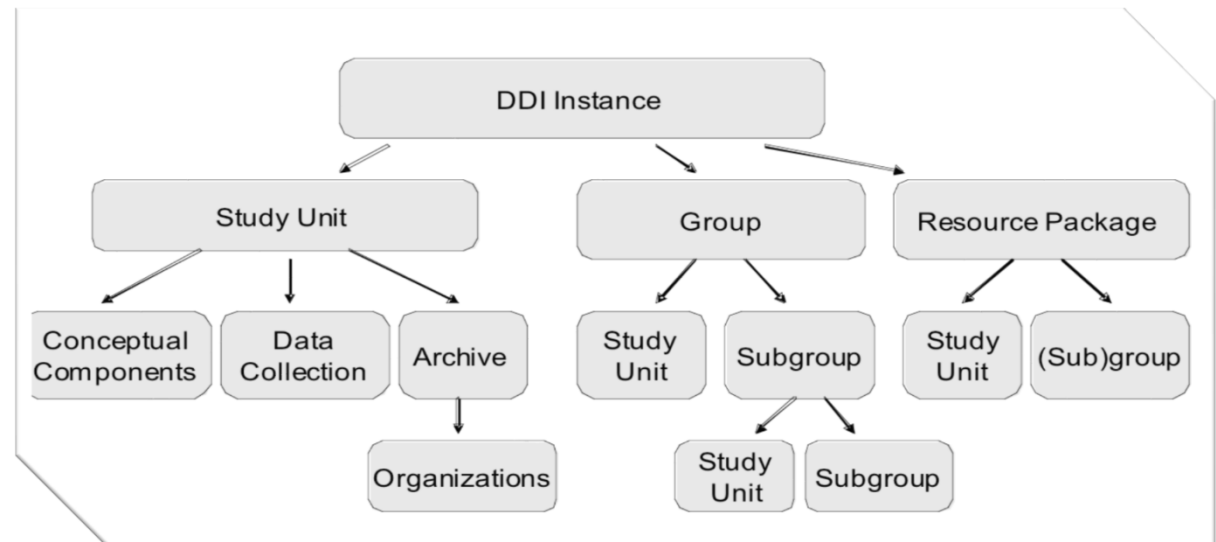




## Part 4 – Metadata

### The Qualiservice Metadata Model

Based on DDI Lifecycle

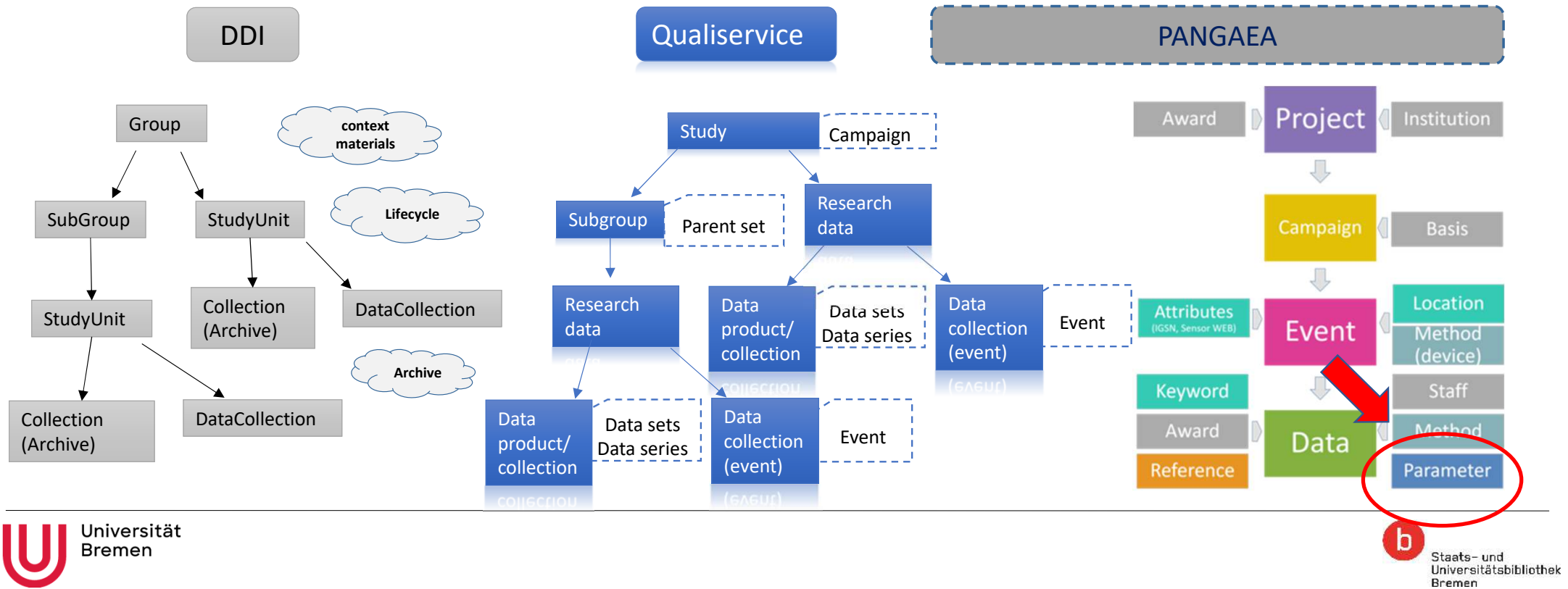


[www.ddialliance.org](http://www.ddialliance.org)

## Part 4 – Metadata

### The Qualiservice Metadata Model

DDI-Profile in the PANGAEA Data Model [https://wiki.pangaea.de/wiki/Qualiservice\\_Data\\_Model](https://wiki.pangaea.de/wiki/Qualiservice_Data_Model)

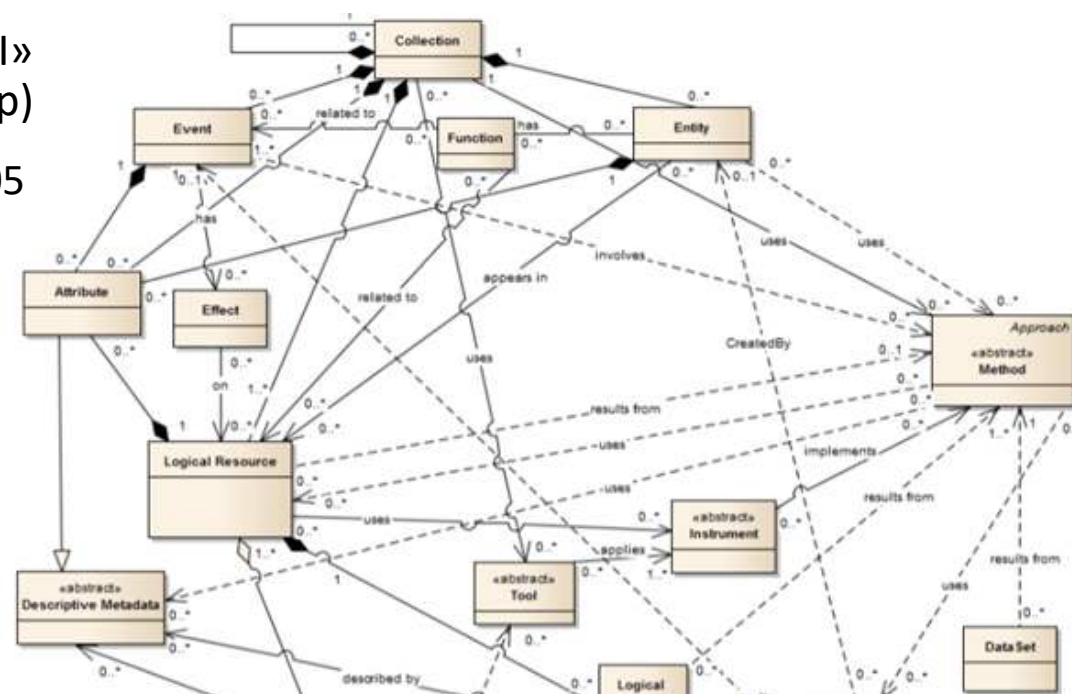


## Part 4 – Metadata

### The Qualiservice Metadata Model

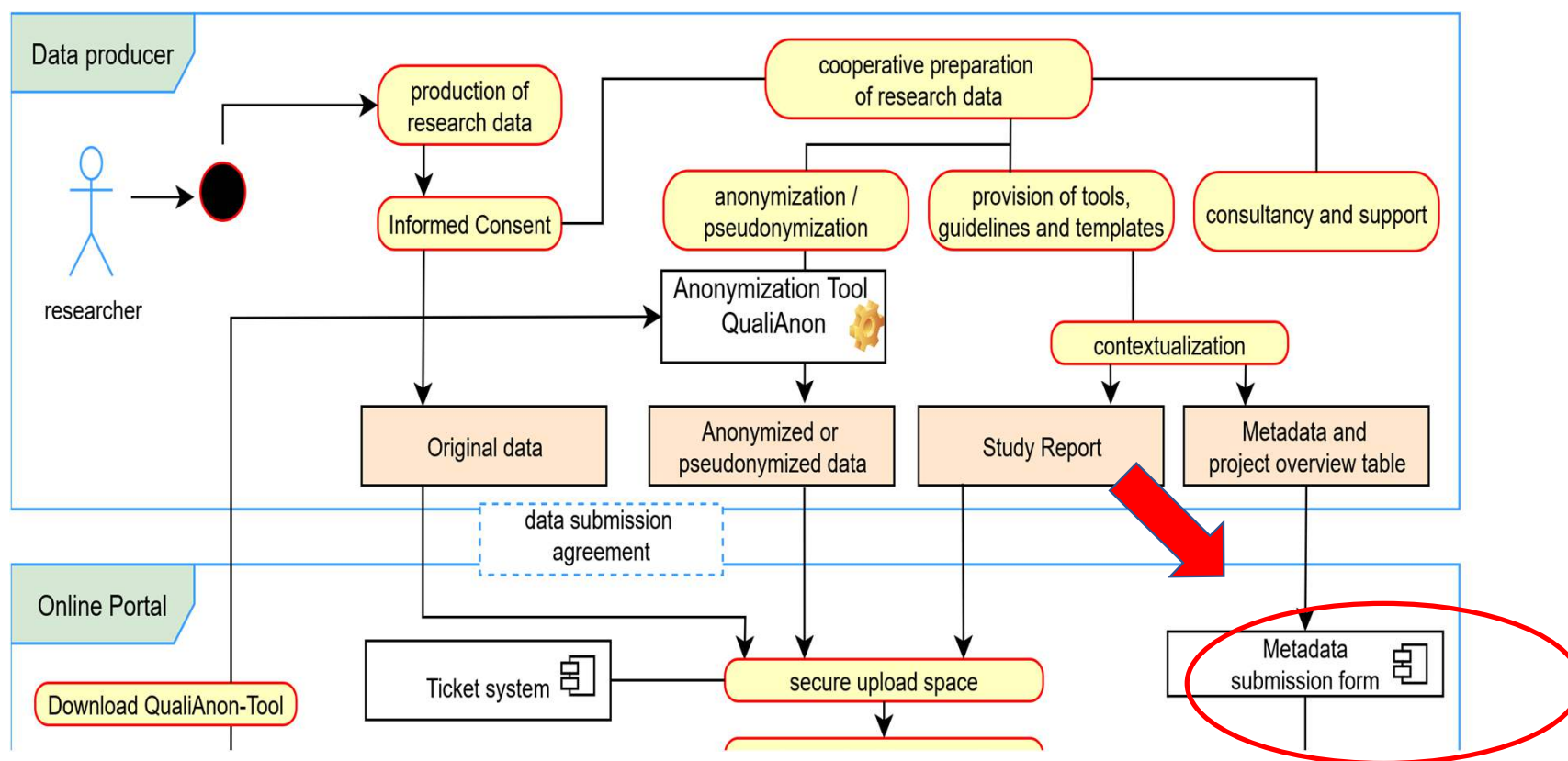
Based on «A Qualitative Data Model for DDI»  
(former DDI Qualitative Data Working Group)

<http://dx.doi.org/10.3886/DDIWorkingPaper05>



## Part 4 – Metadata

### Metadata submission form for data providers



## Part 4 – Metadata

### Metadata submission form for data providers



#### Metadaten zur Studie

##### Titel der Studie ⓘ

Deutsch:

Englisch:

##### Akronym ⓘ

##### Studienleitung ⓘ

Vorname

Nachname

Institution



##### Abstract ⓘ

Deutsch:

Englisch:

## Part 4 – Metadata

### Metadata submission form for data providers

Datenmaterial ⓘ

1. Datenkollektion

Primärdaten

Bitte wählen Sie aus ▼

Bitte wählen Sie aus

Verbale Daten (z.B. Interviews, Fokusgruppen)

Beobachtungen

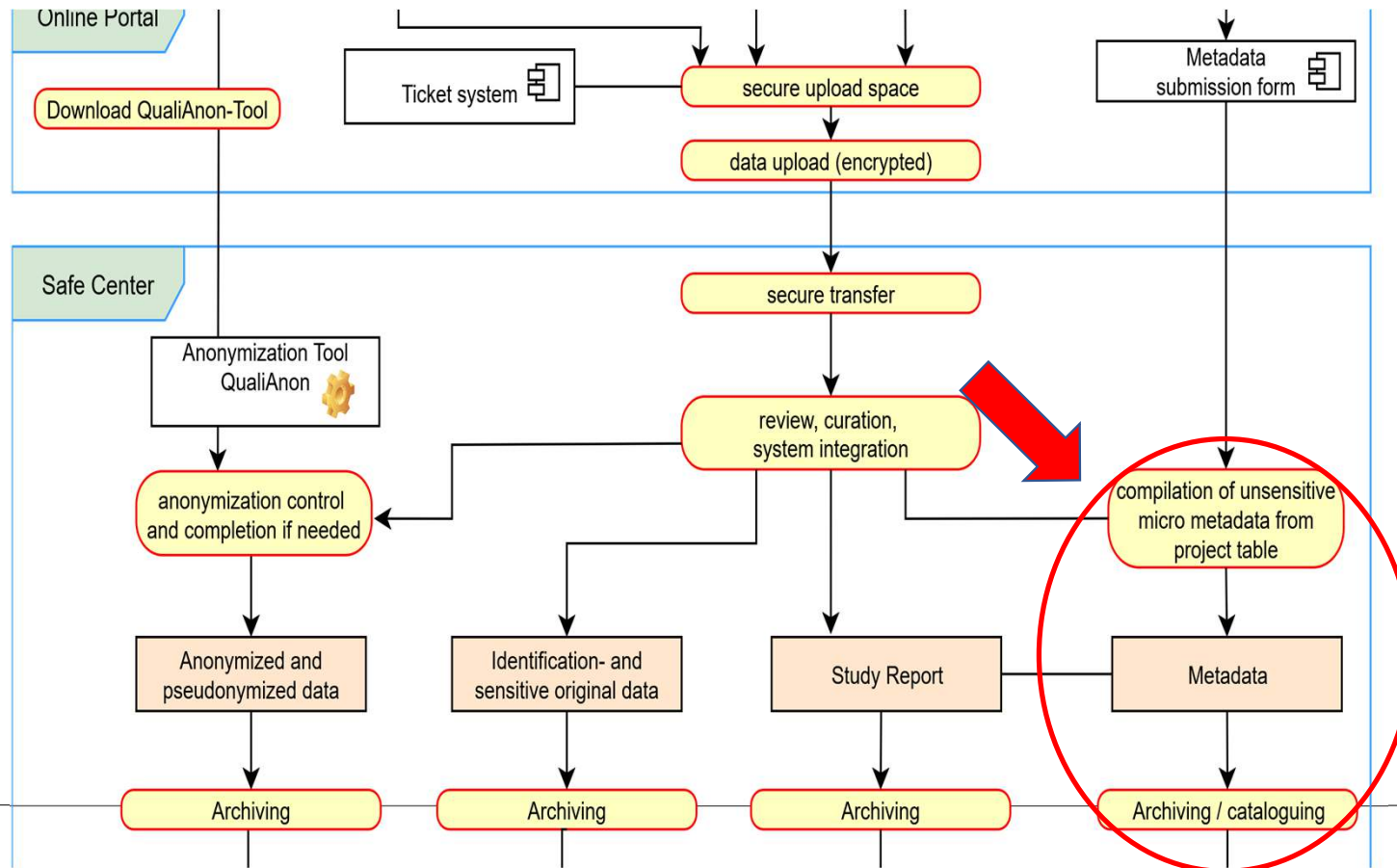
Sammlung von Dokumenten

Weitere Datenkollektionen

The data products or collections

## Part 4 – Metadata

### Metadata in Qualiservice (cataloguing system)



# Part 4 – Metadata

## Metadata in Qualiservice (cataloguing system)

Name \* level: dataset

Abbreviation 0 / 32

Comment Used to classify DDI attributes that can be applied on the dataset level

Description DDI-Mapping: s:StudyUnit or g:Group/g:SubGroup (as round for a parent dataset)  
Datasets sind die Informationen zu den Primärdaten. Man kann mehrere Datasets für eine Studie erfassen (und die in einem Parent Dataset -Welle-gruppieren). In DDI ist ein Dataset eine s:StudyUnit (g:Group und g:SubGroup bundeln alle Datasets einer Studie/Welle zusammen)

Semantic URI

URI https://ddialliance.org

Category classes

Status accepted

Terminology [Data Model E](#)

Related Terms

<input type="checkbox"/>	Relation type	ID	Term name	ID	Term
<input type="checkbox"/>	has broader term	43729	<a href="#">Data Documentation Initiative</a>	20	<a href="#">Dat</a>

[1 entities](#) [Remove All](#) [+ Add Term](#)

Related Reverse Terms

<input type="checkbox"/>	Relation type	ID	Term name	ID	Term
<input type="checkbox"/>	has narrower term	50291	<a href="#">Access</a>	20	<a href="#">Dat</a>
<input type="checkbox"/>	has narrower term	43727	<a href="#">Analysis unit</a>	20	<a href="#">Dat</a>
<input type="checkbox"/>	has narrower term	50378	<a href="#">Call number</a>	20	<a href="#">Dat</a>

PANGAEA Editorial System:  
„DDI-Profile“



## Part 4 – Metadata

### Metadata in Qualiservice (cataloguing system)

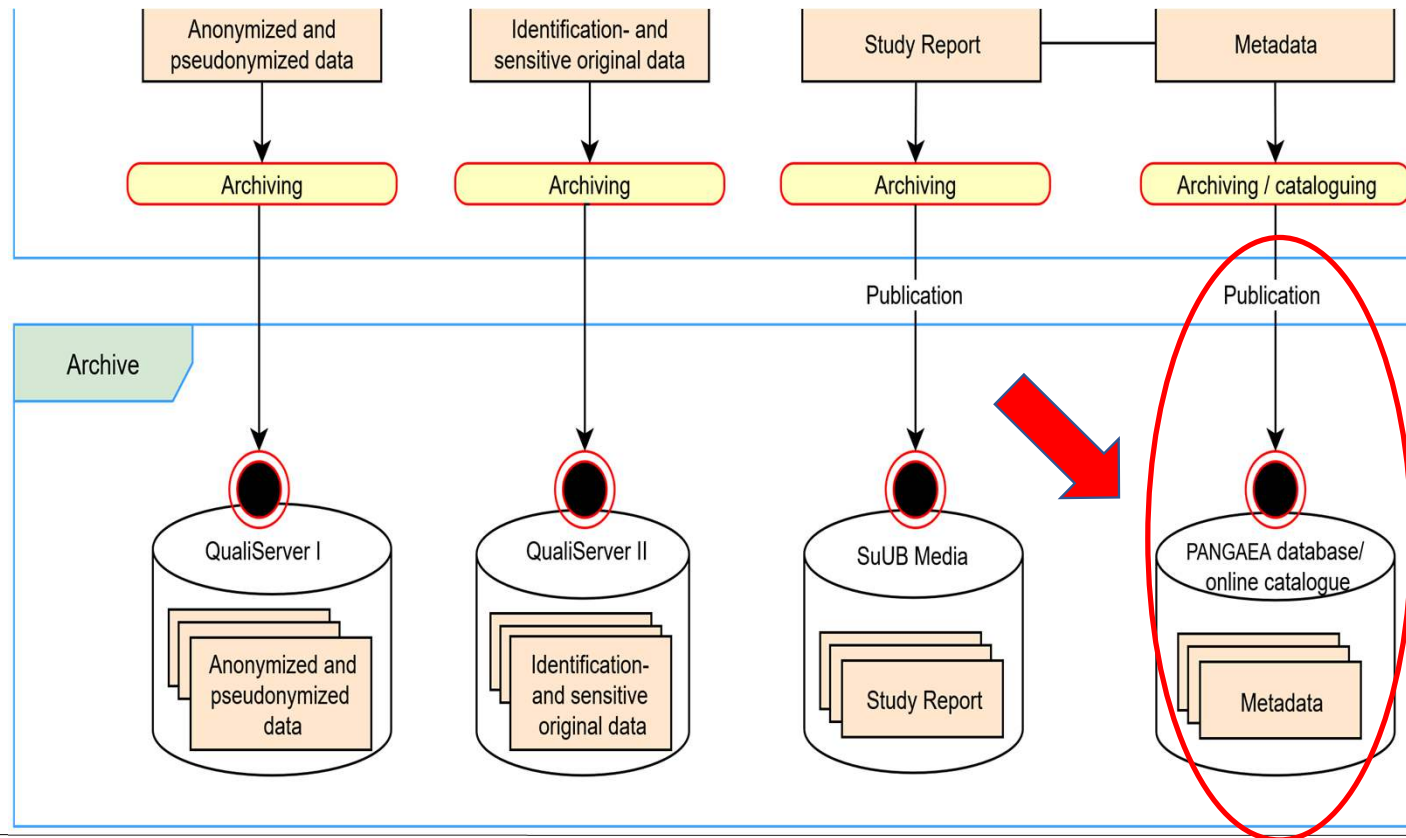
Name *	Analysis unit	Semantic URI	https://ddialliance.o
Abbreviation	0 / 32	URI	https://ddialliance.org/Speci
	Term from DDI Controlled Vocabulary https://www.ddialliance.org/Specification/DDI-CV/AnalysisUnit_1.0.html (urn:ddi-cv:AnalysisUnit)	Category	attributes
Comment	DDI-Mapping: g:Group[/g:SubGroup]/a:StudyUnit/r:AnalysisUnit with attributes @codeListAgencyName="DDI Alliance", @codeListName="AnalysisUnit" and @codeListURN="urn:ddi-cv:AnalysisUnit"	Status	accepted
Description	Forschungsobjekt : Forschungsgegenstand (aus einer kontrollierten Liste). - DDI: The analysis unit describes the entity being analyzed in the data.	Terminology	Data Model Extensio

### Controlled Vocabularies

Related Terms					
<input type="checkbox"/>	Relation type	ID	Term name	ID	Terminolog
<input type="checkbox"/>	has cv term	47438	EventOrProcess	20	Data Mod
<input type="checkbox"/>	has cv term	47434	Family	20	Data Mod
<input type="checkbox"/>	has cv term	47435	Family.HouseholdFamily	20	Data Mod
<input type="checkbox"/>	has cv term	47439	GeographicUnit	20	Data Mod
<input type="checkbox"/>	has cv term	43724	Group	20	Data Mod
<input type="checkbox"/>	has cv term	47436	Household	20	Data Mod
<input type="checkbox"/>	has cv term	47437	HousingUnit	20	Data Mod
<input type="checkbox"/>	has cv term	43725	Individual	20	Data Mod
<input type="checkbox"/>	has broader term	43721	level: dataset	20	Data Mod
<input type="checkbox"/>	has cv term	73445	MediaUnit	20	Data Mod

## Part 4 – Metadata

### Dataset metadata



# Part 4 – Metadata

## Dataset metadata

Citation:	<p>Goerres, Achim; Spies, Dennis C; Mayer, Sabrina J (2020): Das Wahlverhalten der Deutschen mit Migrationshintergrund, qualitative Phase. Transkripte der Fokusgruppeninterviews. PANGAEA, <a href="https://doi.org/10.1594/PANGAEA.919342">https://doi.org/10.1594/PANGAEA.919342</a></p> <p>Always quote citation above when using data! You can download the citation in several formats below.</p> <p> <a href="#">RIS Citation</a> <a href="#">BibTeX Citation</a> <a href="#">Copy Citation</a> <a href="#">Facebook</a> <a href="#">Twitter</a> <a href="#">Open Science</a> </p>
Abstract:	<p>DE: Dieser Datensatz besteht aus den Transkripten von vier Fokusgruppeninterviews der Migrantenwahlstudie. Ziel des Projektes war es, für die Bundestagswahl 2017 die erste deutsche Wahlstudie unter deutschen Staatsbürger/innen mit Migrationshintergrund durchzuführen, d.h. unter solchen Personen, die entweder selbst nach Deutschland immigriert sind oder die mindestens einen Elternteil mit eigener Migrationserfahrung haben. Die Migrantenwahlstudie umfasst eine qualitative und eine quantitative Phase. Ziel der ersten qualitativen Phase (Oktober 2016 bis Juli 2017) war der explorative Zugang zur Themen- und Kandidatenorientierung von Migrant/innen, um die Ergebnisse für eine Publikation sowie die Fragebogenentwicklung der quantitativen Phase zu nutzen: Welche Themenfelder werden als wichtig erachtet? Welche Vorstellung von Links-Rechts gibt es? Welche Kandidateneigenschaften sind besonders relevant? Wie stark ist die Bindung an das Herkunftsland? Als Methode haben wir dabei auf Gruppendiskussionen mit Russlanddeutschen zurückgegriffen, die in Duisburg und Köln durchgeführt wurden. Dabei haben wir mit etwa 5-6 Teilnehmer/innen jeweils knapp zwei Stunden lang diskutiert. Die Forschungsdaten der quantitativen Phase wurden beim Forschungsdatenzentrum GESIS archiviert.</p> <p>EN: This dataset is composed of the transcripts of four focus group interviews for the Immigrant German Election Study. The project aims to conduct the first Immigrant German Election Study for the federal election in 2017, targeting German citizens with an immigrant background, i.e. people who either migrated to Germany themselves (first generation) or have at least one parent who was born in another country (second generation). The Immigrant German Election Study encompasses a qualitative and a quantitative phase. The first qualitative stage of the project (October 2016 until July 2017) explored the issue and candidate orientations of migrants. The results were used for a publication as well as for the development of the questionnaire for the quantitative stage. The core questions are: Which political issues are classified as important to all Germans/all migrants from the same group? What political issues do Germans of immigrant origin perceive as "left" and "right"? What are the identity contents that Germans of migrant origin associate with being German? We used focus group interviews as the research method in the Duisburg/Cologne area that consisted of 5-6 participants each and lasted for about 90 minutes. The research data originating from the quantitative phase have been archived at GESIS Data Archive.</p>
Supplement to:	<p>Goerres, Achim; Mayer, Sabrina J; Spies, Dennis C (2020): Immigrant voters against their will: a focus group analysis of identities, political issues and party allegiances among German resettlers during the 2017 bundestag election campaign. <i>Journal of Ethnic and Migration Studies</i>, 46(7), 1205-1222. <a href="https://doi.org/10.1080/1369183X.2018.1503527">https://doi.org/10.1080/1369183X.2018.1503527</a></p>
Related to:	<p>Goerres, Achim; Spies, Dennis C; Mayer, Sabrina J (2020): Immigrant German Election Study (IMGES). <i>GESIS Data Archive</i>, <a href="https://doi.org/10.4232/1.13544">https://doi.org/10.4232/1.13544</a> (References; quantitative Daten)</p>
Further details:	<p>Goerres, Achim; Spies, Dennis C; Mayer, Sabrina J (2020): Das Wahlverhalten der Deutschen mit Migrationshintergrund - Qualitative Phase : IMGESQ : DFG-Projekt 2016-2020. Bremen: FDZ Qualiservice, 13 pp. <a href="https://doi.org/10.26092/elib/150">https://doi.org/10.26092/elib/150</a> (IsDocumentedBy; Studienreport)</p>
Project(s):	<p>Research Data Center Qualiservice (Qualiservice)</p> <p><a href="#">Additional Funding</a></p>
Coverage:	<p>Date/Time Start: 2017-01-01T00:00:00 * Date/Time End: 2017-06-30T00:00:00</p>
Event(s):	<p>IMGESQ * Date/Time Start: 2017-01-01T00:00:00 * Date/Time End: 2017-06-30T00:00:00 * Instrument: Guidelines.Tight.General * Methodology: DE: Fokusgruppeninterviews mit zwei Moderatoren und standardisierter Befragung (schriftlich, 10 min) vor Beginn; EN: Focus group interviews with two moderators and a standardized questionnaire (written form, 10 mins) prior to the group discussions * Mode of collection: FaceToFace * Responsible: Sabrina J Mayer (76257); Achim Goerres (76093) * Sample size: 22 * Sampling procedure: DE: Aushänge in Supermärkten, Annoncen in Zeitungen, Posts auf Facebook, Aussendung über Mailinglisten, Schneeballverfahren * Location: Germany, North Rhine-Westphalia * Campaign: IMGES (Das Wahlverhalten von Deutschen mit Migrationshintergrund) * Method/Device: DataCollection * Comment: DE: Ziel der ersten qualitativen Phase (Oktober 2016 bis Juli 2017) war der explorative Zugang zur Themen- und Kandidatenorientierung von Migrant/innen, um die Ergebnisse für eine Publikation sowie die Fragebogenentwicklung der quantitativen Phase zu nutzen; EN: The first qualitative stage of the project (October 2016 until July 2017) explored the issue and candidate orientations of migrants. The results were used for a publication as well as for the development of the questionnaire for the quantitative stage.</p>
Domain attribute(s):	<p>Access type: Delivery * Analysis unit: Group * Kind of data: VerbalData.Transcripts * Statement: Upon request by Qualiservice * Study class: SecondaryUse.Research * Sub-universe: DE: Deutsche</p>

## Part 4 – Metadata

### Dataset metadata

#### **FAIR Metadata:**

- PIDs for the dataset and for referencing other resources:
  - Study report: Contextualises the dataset and it is referenced in the metadata. The study report can be searched in full text on the search portal
  - Quantitative data: Qualiservice cooperates with GESIS to jointly present mixed-methods studies → referencing the respective project part via DOI in the metadata so that the study context remains visible.



# Part 4 – Metadata

## Dataset metadata

Citation:	Goerres, Achim; Spies, Dennis C; Mayer, Sabrina J (2020): Das Wahlverhalten der Deutschen mit Migrationshintergrund, qualitative Phase. Transkripte der Fokusgruppeninterviews. PANGAEA, <a href="https://doi.org/10.1594/PANGAEA.919342">https://doi.org/10.1594/PANGAEA.919342</a>
	Always quote citation above when using data! You can download the citation in several formats below.
	<a href="#">RIS Citation</a> <a href="#">BibTeX Citation</a> <a href="#">Copy Citation</a> <a href="#">Facebook</a> <a href="#">Twitter</a> <a href="#">Open Science</a>
Abstract:	<p>DE: Dieser Datensatz besteht aus den Transkripten von vier Fokusgruppeninterviews der Migrantenwahlstudie. Ziel des Projektes war es, für die Bundestagswahl 2017 die erste deutsche Wahlstudie unter deutschen Staatsbürger/innen mit Migrationshintergrund durchzuführen, d.h. unter solchen Personen, die entweder selbst nach Deutschland immigriert sind oder die mindestens einen Elternteil mit eigener Migrationserfahrung haben. Die Migrantenwahlstudie umfasst eine qualitative und eine quantitative Phase. Ziel der ersten qualitativen Phase (Oktober 2016 bis Juli 2017) war der explorative Zugang zur Themen- und Kandidatenorientierung von Migrant/innen, um die Ergebnisse für eine Publikation sowie die Fragebogenentwicklung der quantitativen Phase zu nutzen: Welche Themenfelder werden als wichtig erachtet? Welche Vorstellung von Links-Rechts gibt es? Welche Kandidateneigenschaften sind besonders relevant? Wie stark ist die Bindung an das Herkunftsland? Als Methode haben wir dabei auf Gruppendiskussionen mit Russlanddeutschen zurückgegriffen, die in Duisburg und Köln durchgeführt wurden. Dabei haben wir mit etwa 5-6 Teilnehmer/innen jeweils knapp zwei Stunden lang diskutiert. Die Forschungsdaten der quantitativen Phase wurden beim Forschungsdatenzentrum GESIS archiviert.</p> <p>EN: This dataset is composed of the transcripts of four focus group interviews for the Immigrant German Election Study. The project aims to conduct the first Immigrant German Election Study for the federal election in 2017, targeting German citizens with an immigrant background, i.e. people who either migrated to Germany themselves (first generation) or have at least one parent who was born in another country (second generation). The Immigrant German Election Study encompasses a qualitative and a quantitative phase. The first qualitative stage of the project (October 2016 until July 2017) explored the issue and candidate orientations of migrants. The results were used for a publication as well as for the development of the questionnaire for the quantitative stage. The core questions are: Which political issues are classified as important to all Germans/all migrants from the same group? What political issues do Germans of immigrant origin perceive as "left" and "right"? What are the identity contents that Germans of migrant origin associate with being German? We used focus group interviews as the research method in the Duisburg/Cologne area that consisted of 5-6 participants each and lasted for about 90 minutes. The research data originating from the quantitative phase have been archived at GESIS Data Archive.</p>
Supplement to:	Goerres, Achim; Mayer, Sabrina J; Spies, Dennis C (2020): Immigrant voters against their will: a focus group analysis of identities, political issues and party allegiances among German resettlers during the 2017 bundestag election campaign. <i>Journal of Ethnic and Migration Studies</i> , 46(7), 1205-1222. <a href="https://doi.org/10.1080/1369183X.2018.1503527">https://doi.org/10.1080/1369183X.2018.1503527</a>
Related to:	Goerres, Achim; Spies, Dennis C; Mayer, Sabrina J (2020): Immigrant German Election Study (IMGES). GESIS Data Archive. <a href="https://doi.org/10.4232/1.13544">https://doi.org/10.4232/1.13544</a> (References; quantitative Daten)
Further details:	Goerres, Achim; Spies, Dennis C; Mayer, Sabrina J (2020): Das Wahlverhalten der Deutschen mit Migrationshintergrund - Qualitative Phase : IMGESQ : DFG-Projekt 2016-2020. Bremen: FDZ Qualiservice, 1. Aufl. <a href="https://doi.org/10.26092/elib/150">https://doi.org/10.26092/elib/150</a> (IsDocumentedBy; Studienreport)
Project(s):	Research Data Center Qualiservice (Qualiservice) Additional Funding
Coverage:	Date/Time Start: 2017-01-01T00:00:00 * Date/Time End: 2017-06-30T00:00:00
Event(s):	IMGESQ * Date/Time Start: 2017-01-01T00:00:00 * Date/Time End: 2017-06-30T00:00:00 * Instrument: Guidelines.Tight.General * Methodology: DE: Fokusgruppeninterviews mit zwei Moderatoren und standardisierter Befragung (schriftlich, 10 min) vor Beginn; EN: Focus group interviews with two moderators and a standardized questionnaire (written form, 10 mins) prior to the group discussions * Mode of collection: FaceToFace * Responsible: Sabrina J Mayer (76257); Achim Goerres (76093) * Sample size: 22 * Sampling procedure: DE: Aushänge in Supermärkten, Annoncen in Zeitungen, Posts auf Facebook, Aussendung über Mailinglisten, Schneeballverfahren * Location: Germany, North Rhine-Westphalia * Campaign: IMGES (Das Wahlverhalten von Deutschen mit Migrationshintergrund) * Method/Device: DataCollection * Comment: DE: Ziel der ersten qualitativen Phase (Oktober 2016 bis Juli 2017) war der explorative Zugang zur Themen- und Kandidatenorientierung von Migrant/innen, um die Ergebnisse für eine Publikation sowie die Fragebogenentwicklung der quantitativen Phase zu nutzen; EN: The first qualitative stage of the project (October 2016 until July 2017) explored the issue and candidate orientations of migrants. The results were used for a publication as well as for the development of the questionnaire for the quantitative stage.
Domain attribute(s):	Access type: Delivery * Analysis unit: Group * Kind of data: VerbalData.Transcripts * Statement: Upon request by Qualiservice * Study class: SecondaryUse.Research * Sub-universe: DE: Deutsche

## Part 4 – Metadata

### Dataset metadata

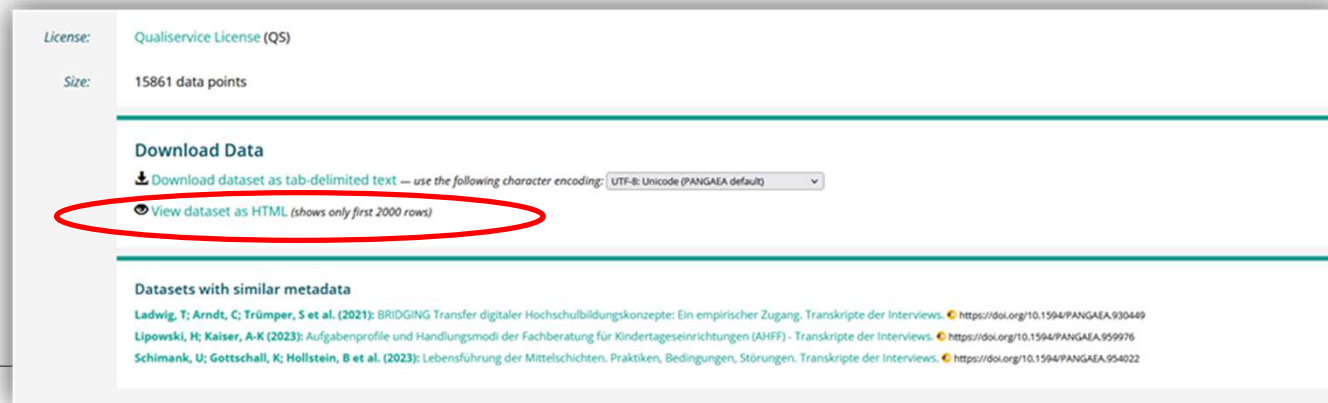
#### **FAIR Metadata:**

- Use of controlled vocabularies for interoperability
- Provenance, license information, and
- Micrometadata providing more granular information at the data object level for reusability

## Part 4 – Metadata

### Micrometadata at Qualiservice

- Non-sensitive information about the case itself (e.g. socio-demographic data),
- Technical information on the data object and the event (duration of the interview, file format, location of the interview etc.),
- Allow an overview of the entire data set at this level of detail,
- Important for assessing the data fit or selecting suitable interviews (as a data set can contain a large number of interviews (over 100 or more))



## Part 4 – Metadata

### Micrometadata at Qualiservice

Parameter(s):

#	Name	Short Name	Unit	Principal Investigator	Method/Device	Comment
1	Data ID	Data ID		Qualiservice Curators Team		
2	File name	File name		Qualiservice Curators Team		ID (Interview-Transkript)
3	General data format	Data format		Qualiservice Curators Team		
4	Data collection date	DC date		Goerres, Achim		Interviewjahr
5	Data collection location	DC location		Goerres, Achim		Interviewort
6	Language	Language		Goerres, Achim		Sprache
7	Number of participants	Participants No #		Goerres, Achim		Anzahl Interviewpartner (female)
8	Number of participants	Participants No #		Goerres, Achim		Anzahl Interviewpartner (male)
9	Age, social sciences	Age	a	Goerres, Achim		Untere Altersgruppe
10	Age, social sciences	Age	a	Goerres, Achim		Höchste Altersgruppe

#### Data

Download dataset as tab-delimited text — use the following character encoding: UTF-8: Unicode (PANGAEA default)

1	2	3	4	5	6	7	8	9	10
Data ID	File name	Data format	DC date	DC location	Language	Participants No [#]	Participants No [#]	Age [a]	Age [a]
(ID (Interview-Transkript))			(Interviewjahr)	(Interviewort)	(Sprache)	(Anzahl Interviewpartner (female))	(Anzahl Interviewpartner (male))	(Untere Altersgruppe)	(Höchste Altersgruppe)
IMGESQ_FG-01	IMGESQ_IT_FG-01	Text	2017-01	Duisburg, North Rhine-Westphalia, Western Germany	deu	3	3	20	49
IMGESQ_FG-02	IMGESQ_IT_FG-02	Text	2017-02	Duisburg, North Rhine-Westphalia, Western Germany	deu	2	3	20	39
IMGESQ_FG-03	IMGESQ_IT_FG-03	Text	2017-03	Koeln, Germany	deu	5	1	60	79
IMGESQ_FG-04	IMGESQ_IT_FG-04	Text	2017-06	Koeln, Germany	deu	4	1	20	29



# Part 4 – Metadata

## Micrometadata at Qualiservice

ID	Name	Abbreviation	Unit	UCUM	Data type	Format
P-182723	General data format	Data format			term	
P-182724	Data ID	Data ID			string	
P-182725	Original data label	Data label			string	
P-182726	Pseudonym	Pseudonym			string	
P-182727	Related data	Rel. data/case			string	
P-182728	Relationship	Relationship			string	
P-182729	Relationship sequence	Relationship seq	#		numeric	#0
P-182730	Date of birth	Birth year			datetime	yyyy

Parameter

#	Name	Short Name	Unit	Principal Investigator	Method/Device	Comment
1	Data ID	Data ID		Qualiservice Curators Team		
2	File name	File name		Qualiservice Curators Team		ID (Interview-Transkript)
3	General data format	Data format		Qualiservice Curators Team		
4	Data collection date	DC date		Goerres, Achim		Interviewjahr
5	Data collection location	DC location		Goerres, Achim		Interviewort
6	Language	Language		Goerres, Achim		Sprache
7	Number of participants	Participants No	#	Goerres, Achim		Anzahl Interviewpartner (female)
8	Number of participants	Participants No	#	Goerres, Achim		Anzahl Interviewpartner (male)
9	Age, social sciences	Age	a	Goerres, Achim		Untere Altersgruppe
10	Age, social sciences	Age	a	Goerres, Achim		Höchste Altersgruppe

# Part 4 – Metadata

## Micrometadata at Qualiservice

### Data

Download dataset as tab-delimited text — use the following character encoding: UTF-8: Unicode (PANGAEA default) ▼

1	2	3	4	5	6	7	8	9	10	11	12	13	14
Case ID	Data ID	File name	Data format (Datenformat)	Content	DC Method	Language	Event	DC date	Event duration	Gender (Geschlecht)	Birth year (Geburtskohorte, min)	Birth year (Geburtskohorte, max)	Occup. status
1	MainLife_01-1-LG_1-226	MainLife_IT-LG_01-1_1-226	Text	Lebensgeschichte	Narration	deu	MainLife_01	2003	PT16M5S	female	1993	1995	keine Angabe
1	MainLife_01-2-LG_1-1256	MainLife_IT-LG_01-2_1-1256	Text	Lebensgeschichte	Narration	deu	MainLife_01	2003	PT14M33S	female	1993	1995	keine Angabe
1	MainLife_02-LG_1-980	MainLife_IT-LG_02_1-980	Text	Lebensgeschichte	Narration	deu	MainLife_02	2007	PT11M93S	female	1993	1995	Schule
1	MainLife_03-LG_1-590	MainLife_IT-LG_03_1-590	Text	Lebensgeschichte	Narration	deu	MainLife_03	2011	PT9M07S	female	1993	1995	keine Angabe
1	MainLife_04-LG_1-141	MainLife_IT-LG_04_1-141	Text	Lebensgeschichte	Narration	deu	MainLife_04	2015	PT12M38S	female	1993	1995	Keine Berufstätigkeit
1	MainLife_04-ZM_1	MainLife_IT-ZM_04_1	Text	Zusatzerzählung Mutter	Narratives Interview	deu	MainLife_04	2015	PT2M32S	female	1993	1995	Keine Berufstätigkeit
1	MainLife_04-ZV_1	MainLife_IT-ZV_04_1	Text	Zusatzerzählung Vater	Narratives Interview	deu	MainLife_04	2015	PT2M28S	female	1993	1995	Keine Berufstätigkeit
1	MainLife_04-ZP_1	MainLife_IT-ZP_04_1	Text	Zusatzerzählung Persönlichkeit	Narratives Interview	deu	MainLife_04	2015	PT1M56S	female	1993	1995	Keine Berufstätigkeit
1	MainLife_04-ZW_1	MainLife_IT-ZW_04_1	Text	Zusatzerzählung Werte	Narratives Interview	deu	MainLife_04	2015	PT1M55S	female	1993	1995	Keine Berufstätigkeit
2	MainLife_01-1-LG_2-1046	MainLife_IT-LG_01-1_2-1046	Text	Lebensgeschichte	Narration	deu	MainLife_01	2003	PT9M67S	female	1993	1995	keine Angabe
2	MainLife_01-2-LG_2-1297	MainLife_IT-LG_01-2_2-1297	Text	Lebensgeschichte	Narration	deu	MainLife_01	2003	PT9M45S	female	1993	1995	keine Angabe
2	MainLife_02-LG_2-465	MainLife_IT-LG_02_2-465	Text	Lebensgeschichte	Narration	deu	MainLife_02	2007	PT14M46S	female	1993	1995	Schule
2	MainLife_03-LG_2-131	MainLife_IT-LG_03_2-131	Text	Lebensgeschichte	Narration	deu	MainLife_03	2011	PT10M05S	female	1993	1995	Schule
2	MainLife_04-LG_2-1088	MainLife_IT-LG_04_2-1088	Text	Lebensgeschichte	Narration	deu	MainLife_04	2015	PT9M47S	female	1993	1995	Berufstätigkeit

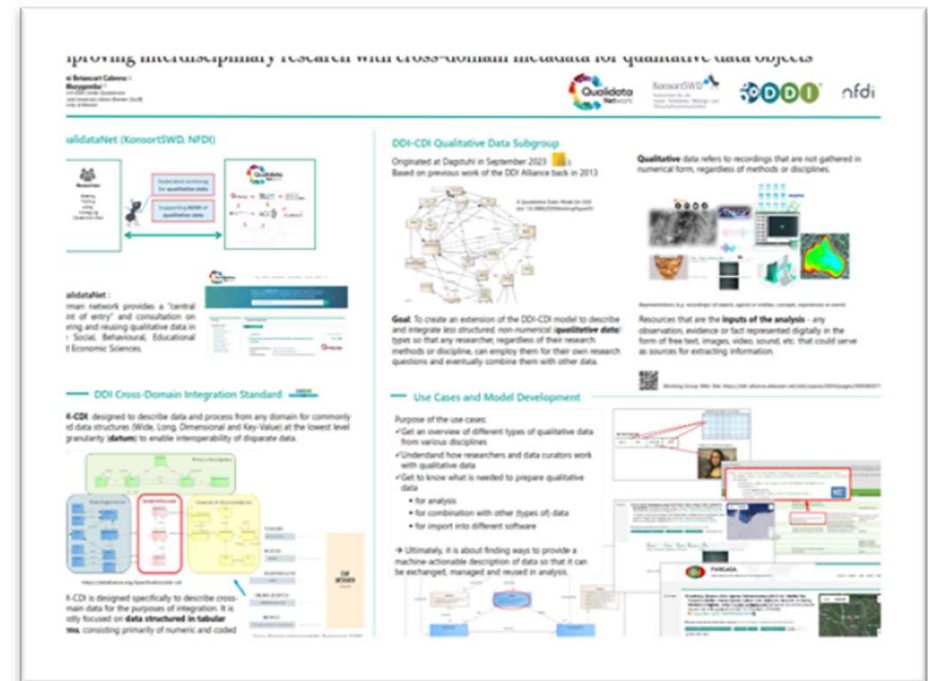
## Part 4 – Metadata

### Metadata: Current (inter)national collaborations (QualidataNet)



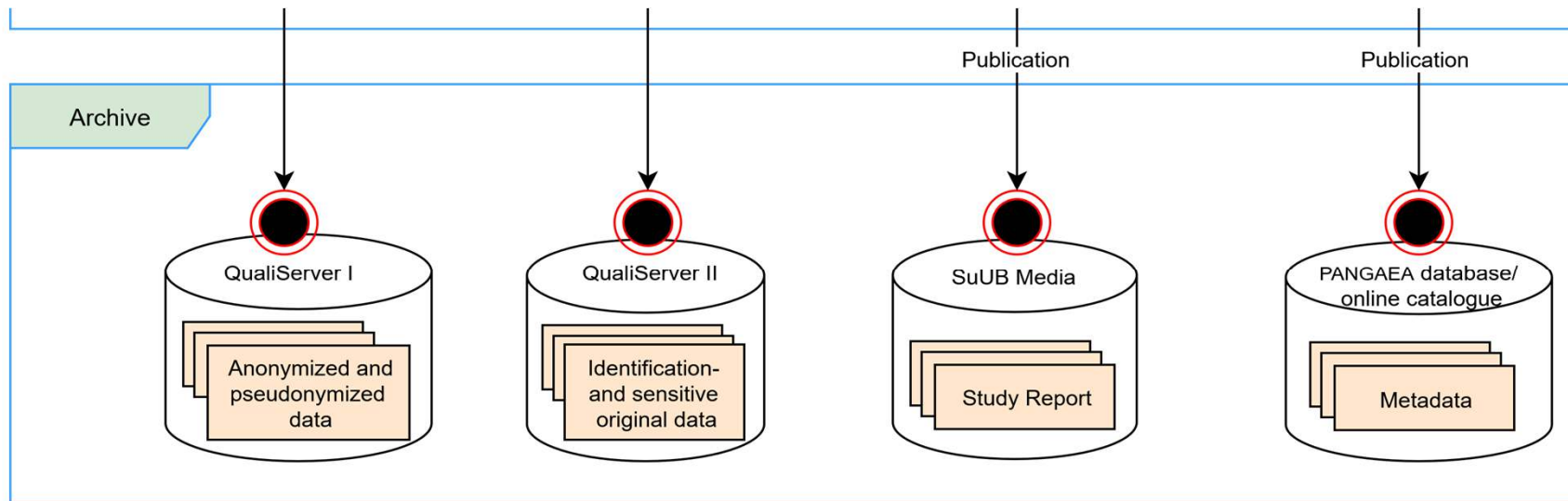
<https://doi.org/10.5281/zenodo.14039150>

- QualiTerm (sampling, collection, analysis processing methods) developed by QualidataNet – Network for qualitative data <https://www.qualidatanet.com/en/>
- Metadata model development: DDI-CDI Qualitative Data Subgroup (cross-domain integration of quantitative and qualitative data)
- New [DDI Qualitative Data Working Group](#)



# Workflow for data preparation and data curation at

## Part 5 – Archive



Secure hosting of research data and materials on separate servers

operated by Bremen university with a range of technical-organisatory measures (TOM)

# Workflow for data preparation and data curation at



## Part 5 – Archive

→ online catalogue output based on metadata records

Online Search Portal

<https://www.qualiservice.org/de/qsearch.html>

→ **Free text search:**

Fulltext search  
in Study reports  
and Metadata

or

→ **Browsing:**

Method,  
Location, Author,  
Study (Acronym),  
Publication year

The screenshot displays the Qualiservice Search Portal interface. On the left, a blue sidebar contains filter categories: Method, Location, Author, Study, and Publication year, each with a list of options and counts. The main area features a search bar at the top, followed by a 'Temporal extent' filter. Below these are navigation links (PREV, 1, 2, 3, 4, 5, NEXT) and a list of search results, each with a 'Show more' button. A QR code is located in the bottom right corner of the interface.

**Qualiservice Search Portal**

Filter by...

**Method**  
Interview, Leitfadengestütztes Interview (12)  
Interview, Experteninterview (10)  
Interview, Problemzentriertes Interview (6)  
Interview, Biographisches Interview, Autobiographisches Interview (4)  
Interview, Ethnographisches Interview (teilnehmende Beobachtung) (4)  
Simulation, Simulation einer Kommunikationssituation (4)  
Beobachtung, Teilnehmende Beobachtung (3)  
Interview, Fokusgruppeninterview (3)

**Location**  
Germany (11)  
Berlin, Germany (4)  
Ecuador (4)  
Köln, Germany (4)  
Bremen, Germany (3)  
Ankara, Turkey (1)  
Beijing, China (1)  
Frankfurt am Main, Hesse, Southern Germany (1)

**Author**  
Broer, Irene (4)  
Brooks, Anne-Katrin (4)  
Sommer, Ilka (4)  
Weiß, Anja (4)  
Aruin, Sergej (2)  
Davidov, Jonathan (2)  
Franke, Ulrich (2)  
Hollstein, Betina (2)

**Study**  
GLOPRO (4)  
MAMM (4)  
MeWiKo (4)  
AEDEUS (2)  
CONAV (2)  
AVuM (1)  
AaZ (1)  
Autospiri (1)

**Publication year**  
■ unpublished (16)  
■ 2025 (3)  
■ 2024 (8)

Search for metadata of datasets, study reports (full-text search), etc.

**Temporal extent**  
from to

<< PREV | 1 | 2 | 3 | 4 | 5 | NEXT >>

1. Broer, Irene (2021): Medien und wissenschaftliche Kommunikation: Redaktionelle Prozesse der Vermittlung wissenschaftlicher Exp Germany. Ethnographische Forschungsdaten  
Show more
2. Weiß, Anja; Sommer, Ilka; Chen, Wei; Liu, Tao; Guo, Fan; Liu, Wenting (2021): Globalizing medical knowledge and practise. Doctor-patie university hospital in Beijing (PRChina). Transcripts, translation, audiovisual and context material  
Show more
3. Heinz, Walter R; Witzel, Andreas; Bogun, Roland; Helling, Vera; Mönnich, Ingo (2022): Statuspassagen in die Erwerbstätigkeit: Berufsbiographien bei der Integration in das Beschäftigungssystem (Statuspassagen an der "zweiten Schwelle" II) (SPE). Transkripte der Int  
Show more
4. Lessenich, Stephan (2022): Altern als Zukunft. Transkripte der Interviews  
Show more
5. Ladwig, Tina; Arndt, Christiane; Trümper, Stefanie; Köllner, Gitta; Figura, Lisa (2021): BRIDGING Transfer digitaler Hochschulbildungs Transkripte der Interviews  
Show more
6. Krämer, Steffen; Otto, Isabell: Digitale Öffentlichkeiten und ambivalente Teilhabe (KON\_F06). Qualitative Social Media Daten  
Show more
7. Gruber, Martin (2024): Traditional Beekeeping and Honey Hunting in Central Cameroon. Audiovisual Material, Video Footage  
Show more
8. Haubner, Tine; Laufenberg, Mike; Boemke, Laura (2025): Gesellschaft selber machen? Informelle Ökonomien und soziale Teilhabe in ländl der Interviews  
Show more
9. Schimank, Uwe; Kumkar, Nils Christian (2024): Wie hängen Work Logics, Vorstellungen gesellschaftlil Transkripte der Gruppendiskussionen  
Show more
10. Kewes, Andreas; Haas, Benjamin (2024): Vierter Engagementbericht der Bundesregierung (VEB). Transkrip  
Show more

<< PREV | 1 | 2 | 3 | 4 | 5 | NEXT >>

<https://www.qualiservice.org/de/qsearch.html>



For further questions please contact:



**Web:**

<https://www.qualiservice.org>

**Mail:**

[info@qualiservice.org](mailto:info@qualiservice.org)

