

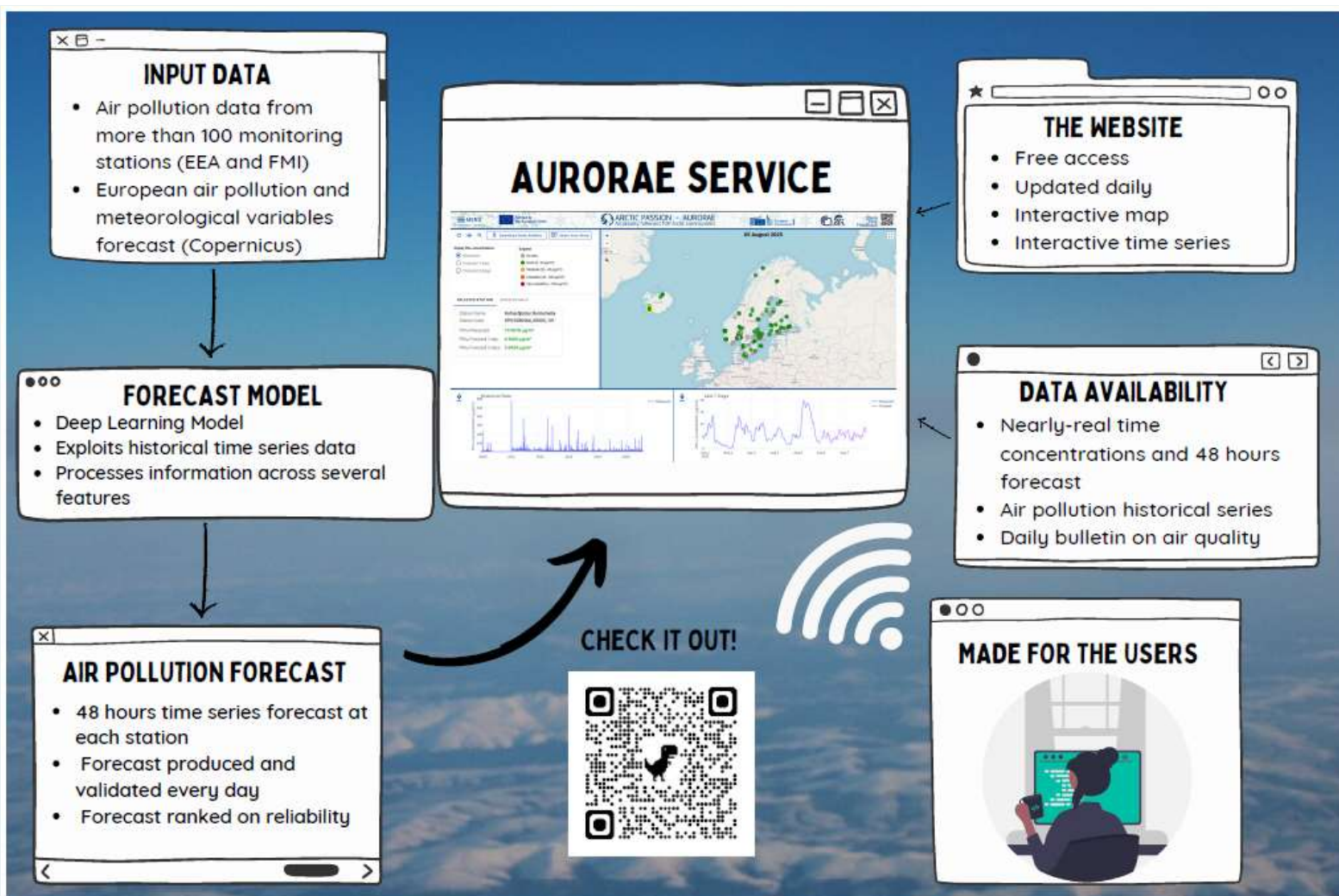
Air Quality Forecast for Arctic Communities Service (AURORAE)

I.Crotti¹, A.Cuzzucoli², D.De Marchi¹, E.Ramalli¹, A.Pasini², S.Dobricic¹

¹European Commission, Joint Research Centre, Ispra, Italy

²Institute of Atmospheric Pollution Research, National Research Council, Roma, Italy

Contacts : ilaria.crotti@ec.europa.eu, sdan.dobricic@ec.europa.eu, alicecuzzucoli@cnr.it



AIR POLLUTION FORECAST IN THE ARCTIC

- **Particulate matter (PM) concentrations forecasted by Copernicus in the European Arctic appear to less accurately fit monitoring station observations compared to the rest of Europe**

A NOVEL ARTIFICIAL INTELLIGENCE APPROACH

- **The 48 hours forecast is performed with deep learning architectures at monitoring station geographical locations**

A SERVICE MADE FOR THE USERS

- The **AURORAE service website is an easy-to-use interactive map where forecasted and near-real time concentrations are displayed for each station and updated at daily frequency**
- Provides **accessible forecasts to local communities that can support decisions on pollution reduction and prevention**

SHARE YOUR FEEDBACK!

