

# Lossy compression formats

**Image Processing & Analysis for Life Scientist**

Olivier Burri, Romain Guiet & Arne Seitz

# Lossy compression formats

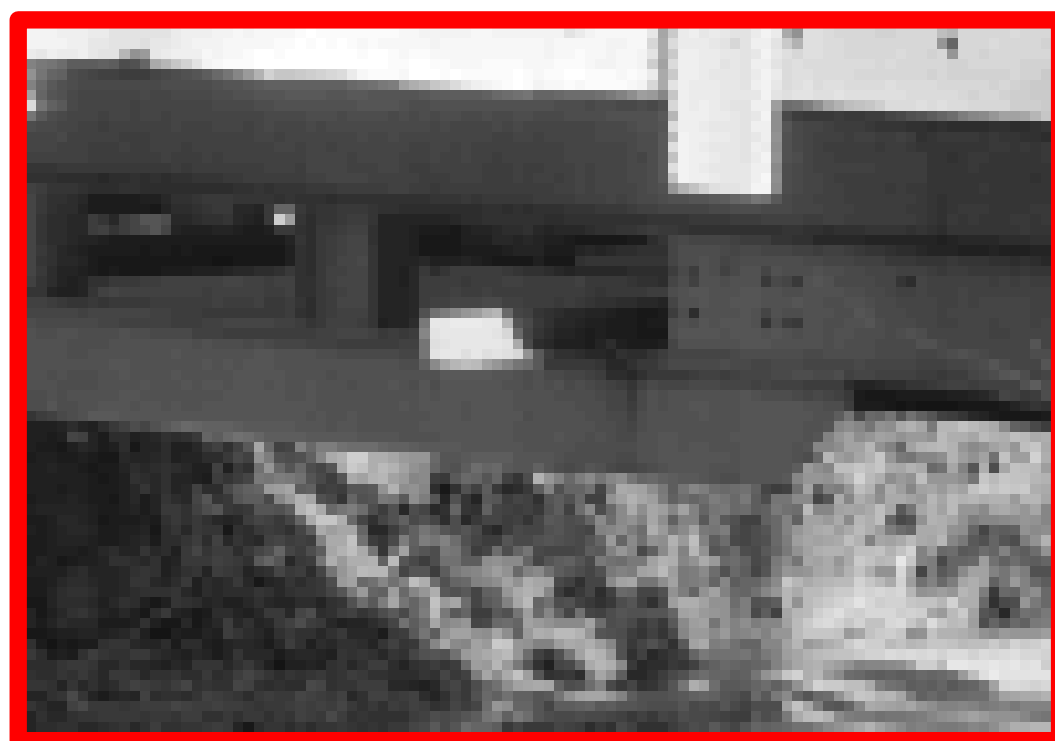
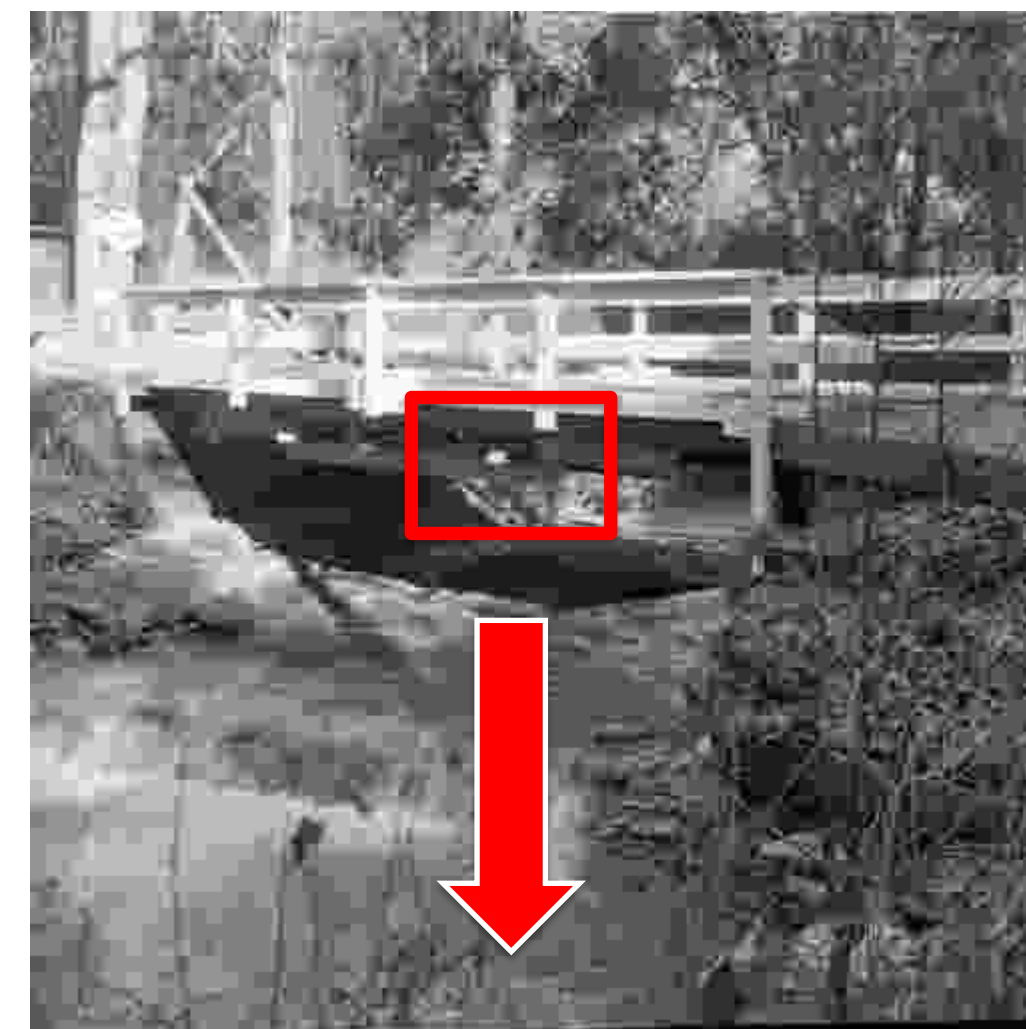
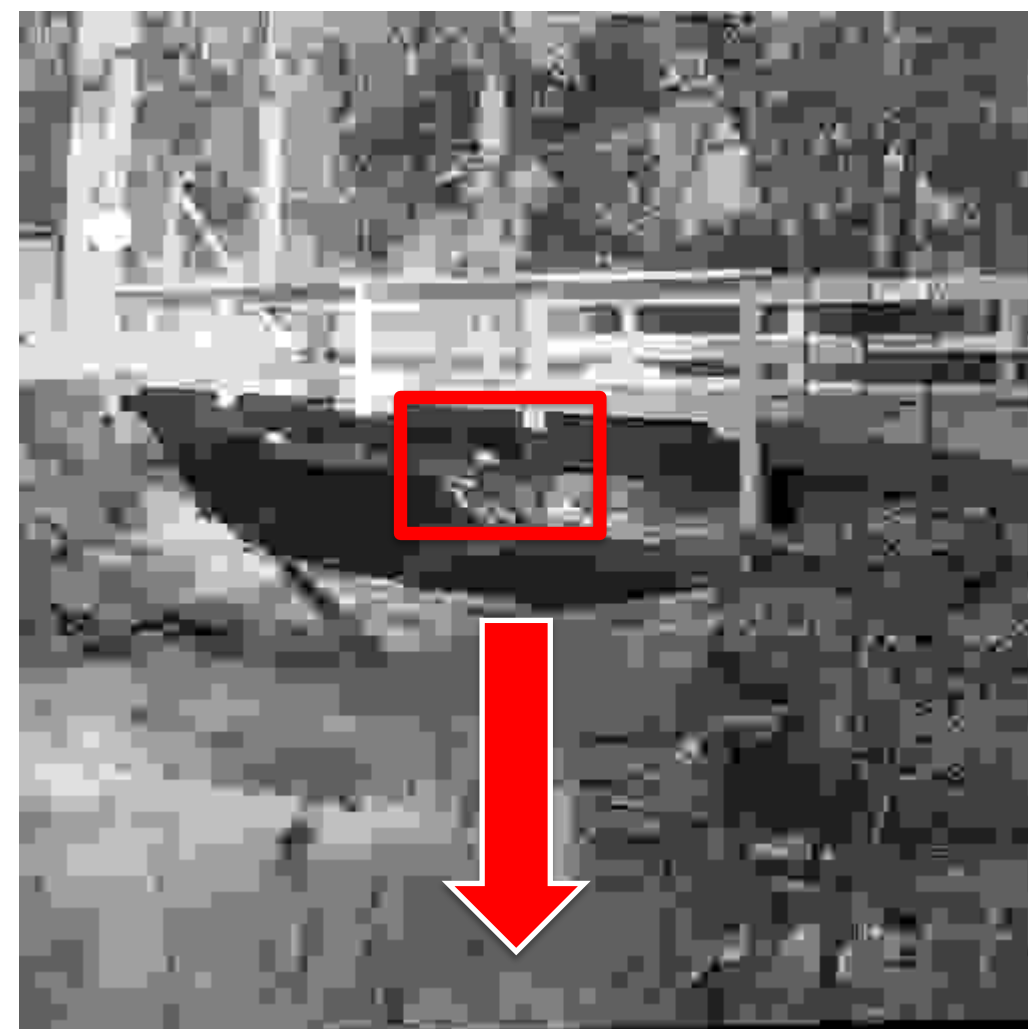
The image on this slide was saved using the jpeg compression algorithm with a varying quality parameter. The images are shown in the following slides:

1. Scroll through the following slides, ideally back and forth.
2. Pay attention to the changes in the image.
3. Pay attention to the file size (given below the image).
4. Which structures are disappearing, when the quality parameter is decreasing?





# Jpeg compression



Original  
Size: 257 kB

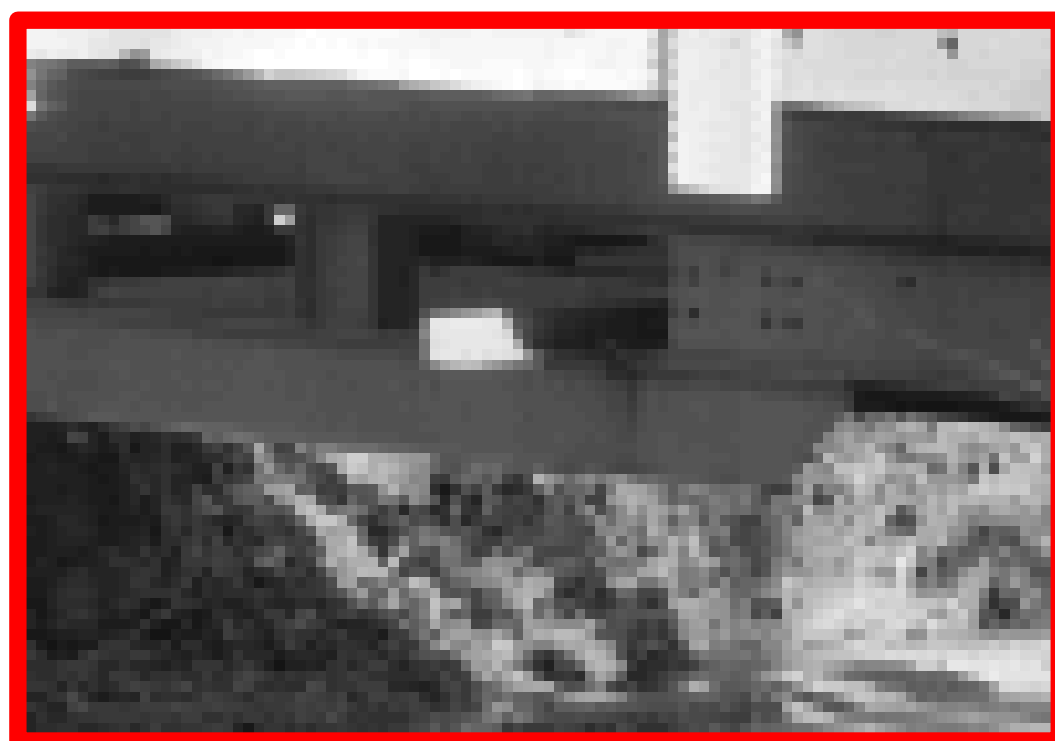
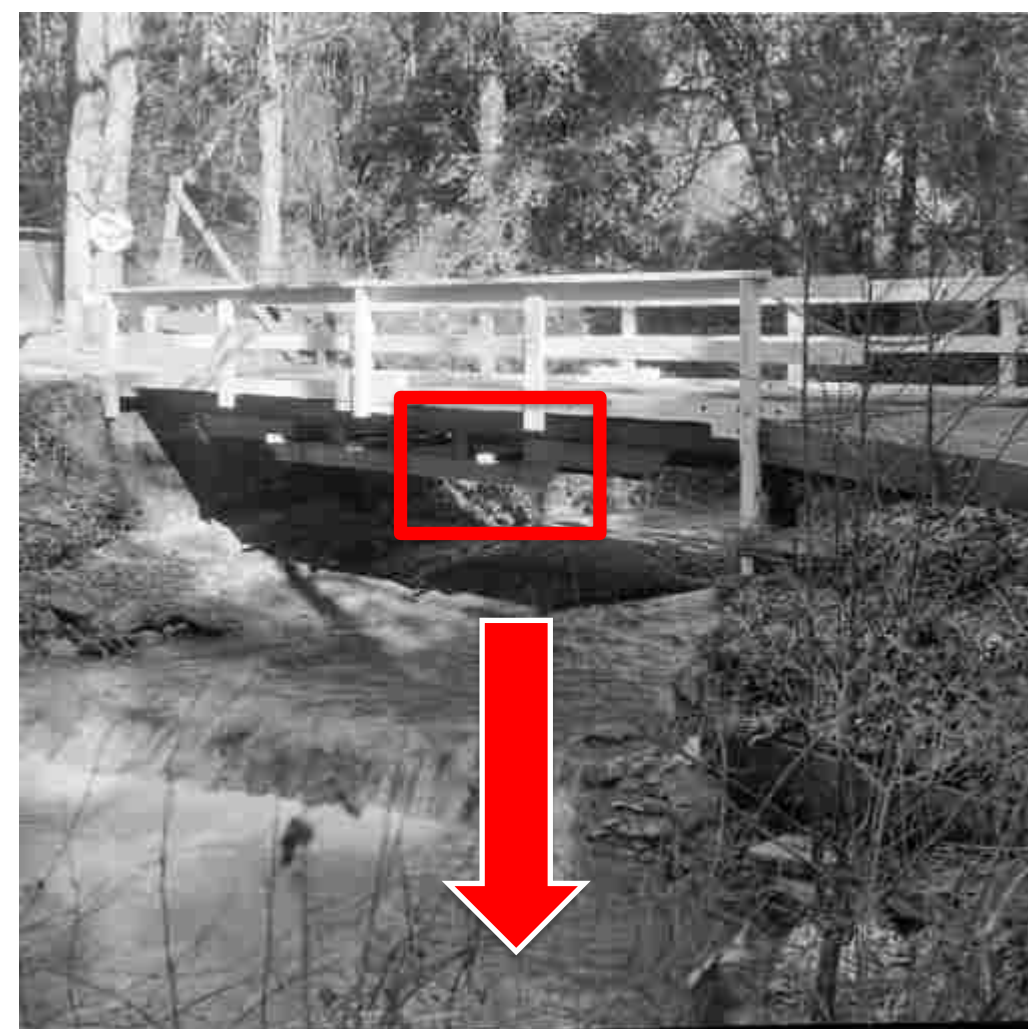
Quality: 5%  
Size: 5 kB

Quality: 10%  
Size: 5 kB

Quality 15%  
Size: 14 kB



# Jpeg compression



Original  
Size: 257 kB

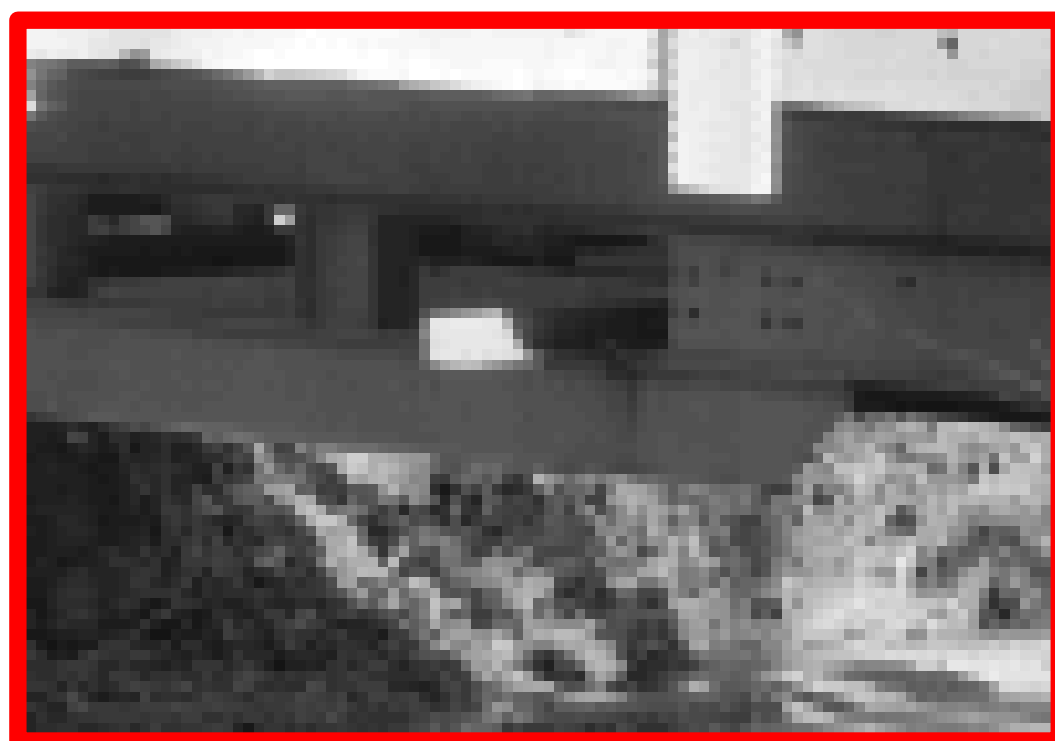
Quality: 20%  
Size: 18 kB

Quality: 25%  
Size: 23 kB

Quality 30%  
Size: 26 kB



# Jpeg compression



Original  
Size: 257 kB

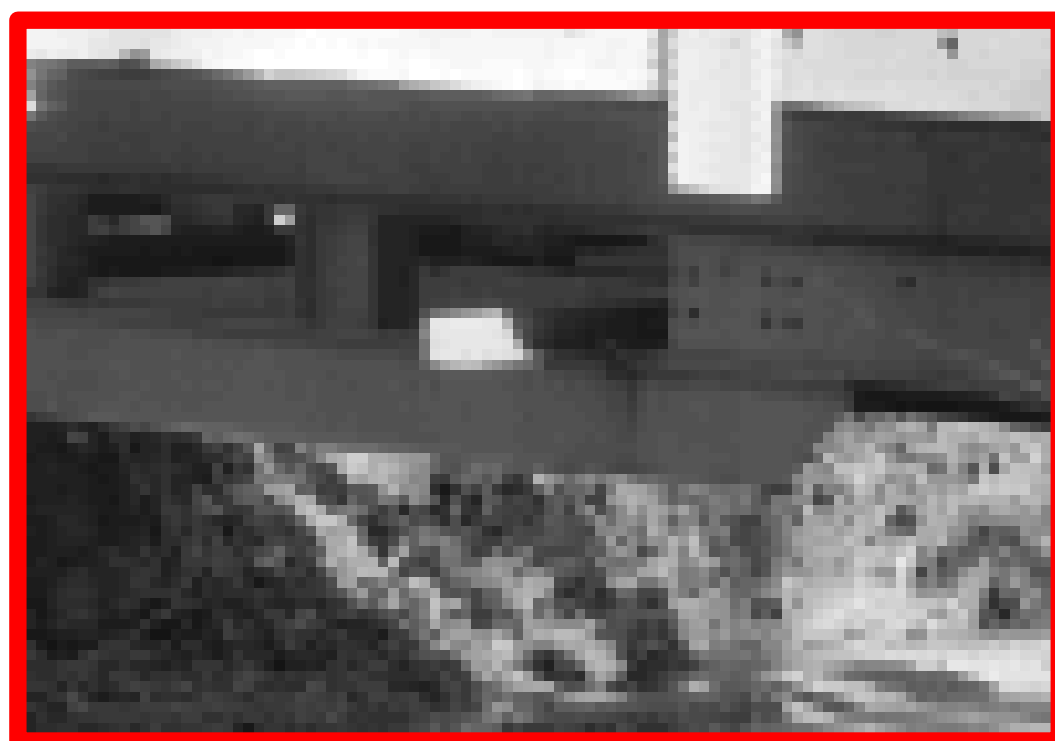
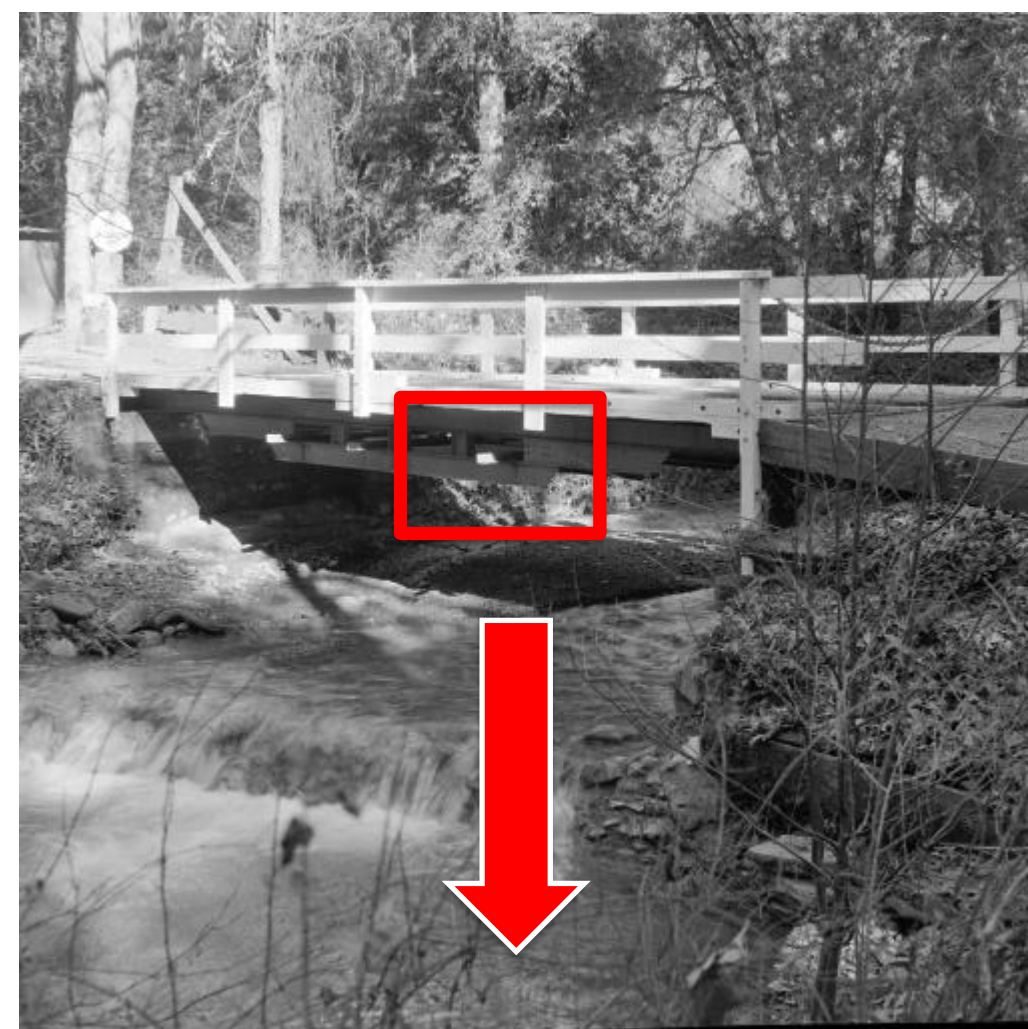
Quality: 40%  
Size: 38 kB

Quality: 50%  
Size: 44 kB

Quality 60%  
Size: 51 kB



# Jpeg compression



Original  
Size: 257 kB

Quality: 70%  
Size: 62 kB

Quality: 80%  
Size: 83 kB

Quality 90%  
Size: 141 kB