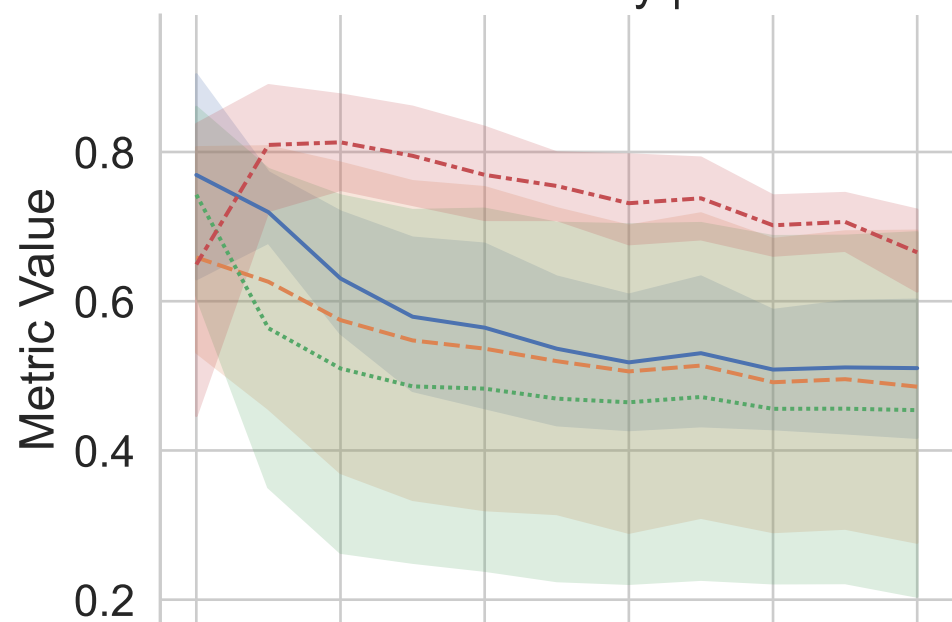
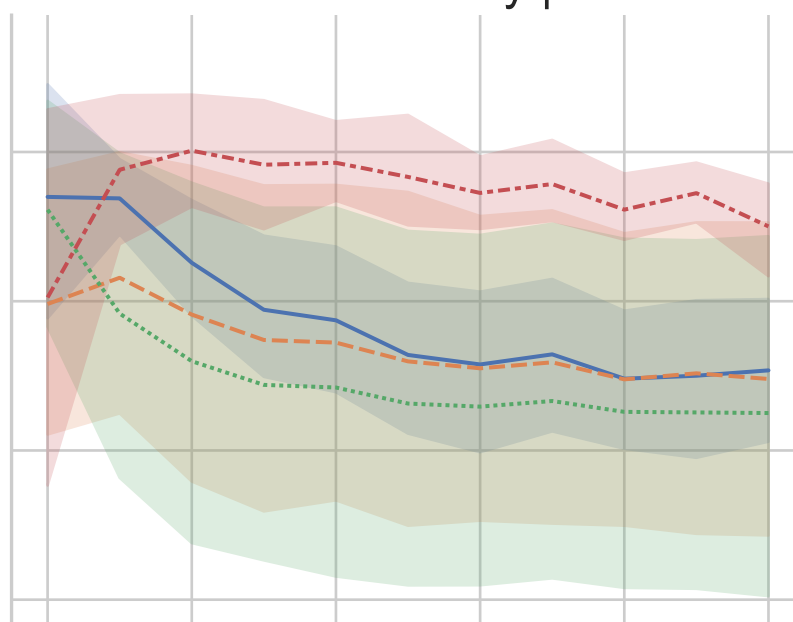


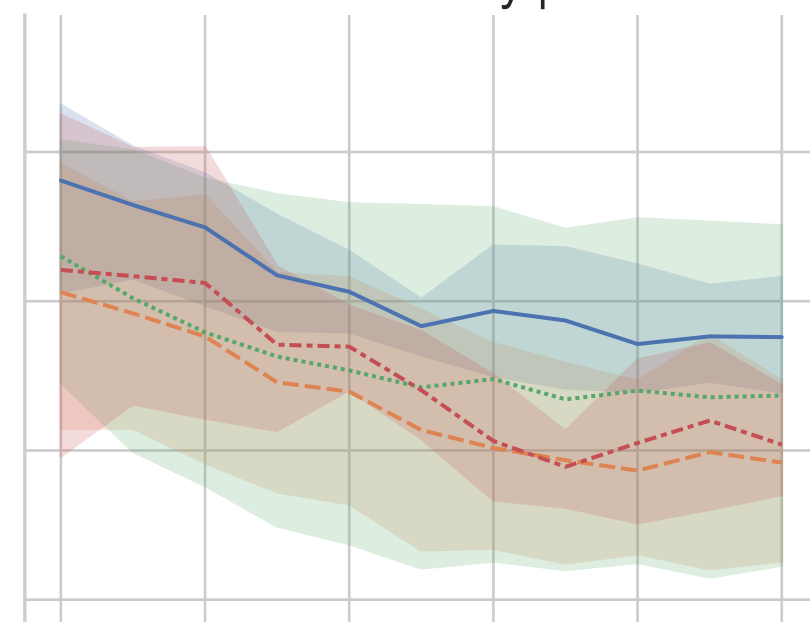
Statistical Parity | XGB



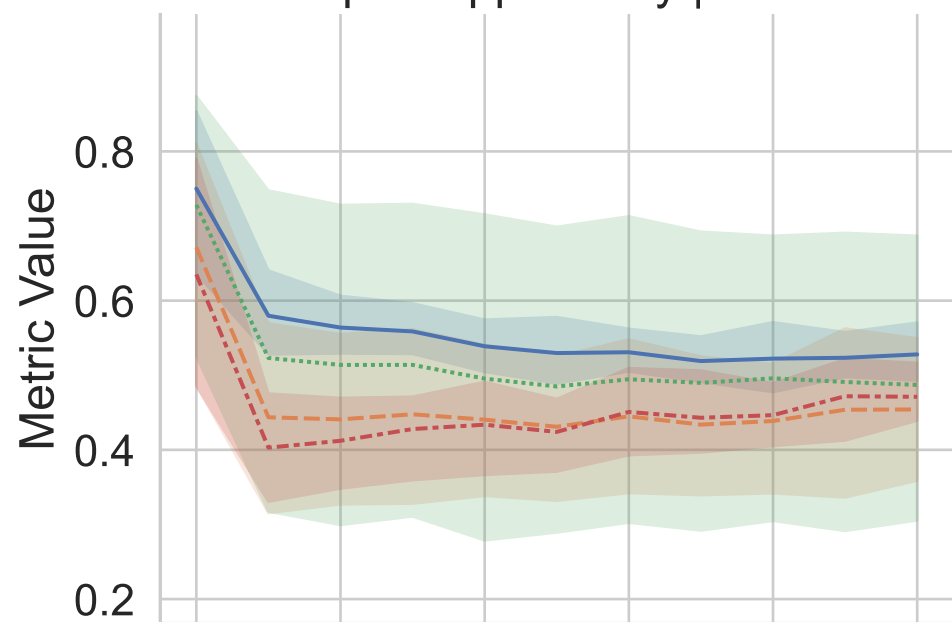
Statistical Parity | RF



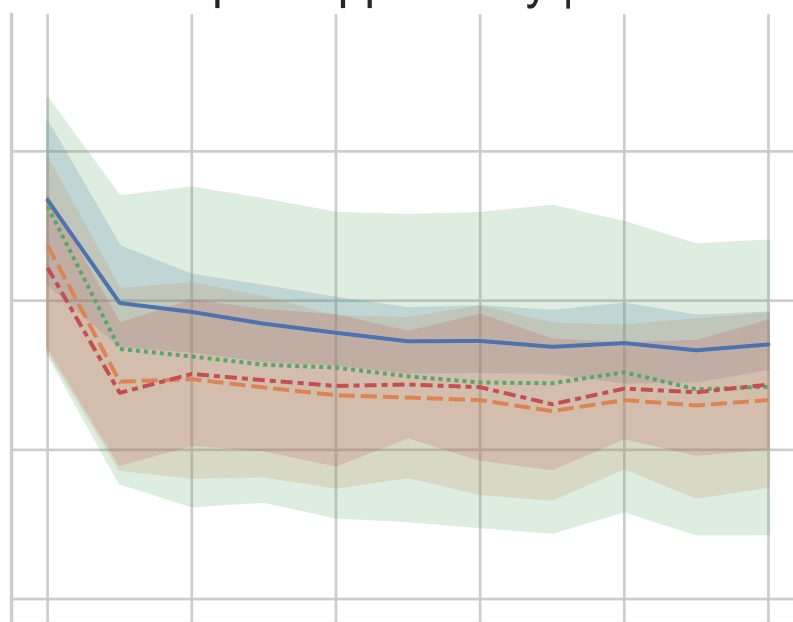
Statistical Parity | MLP



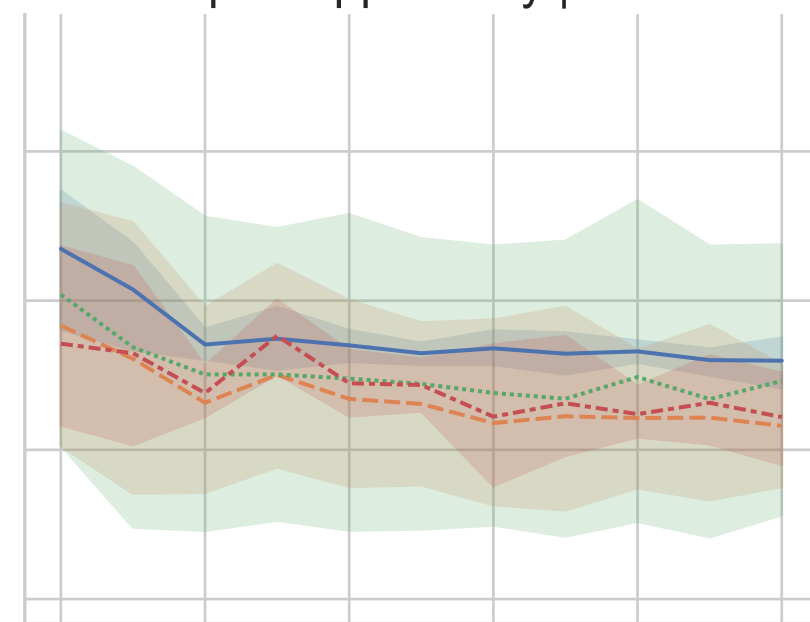
Equal Opportunity | XGB



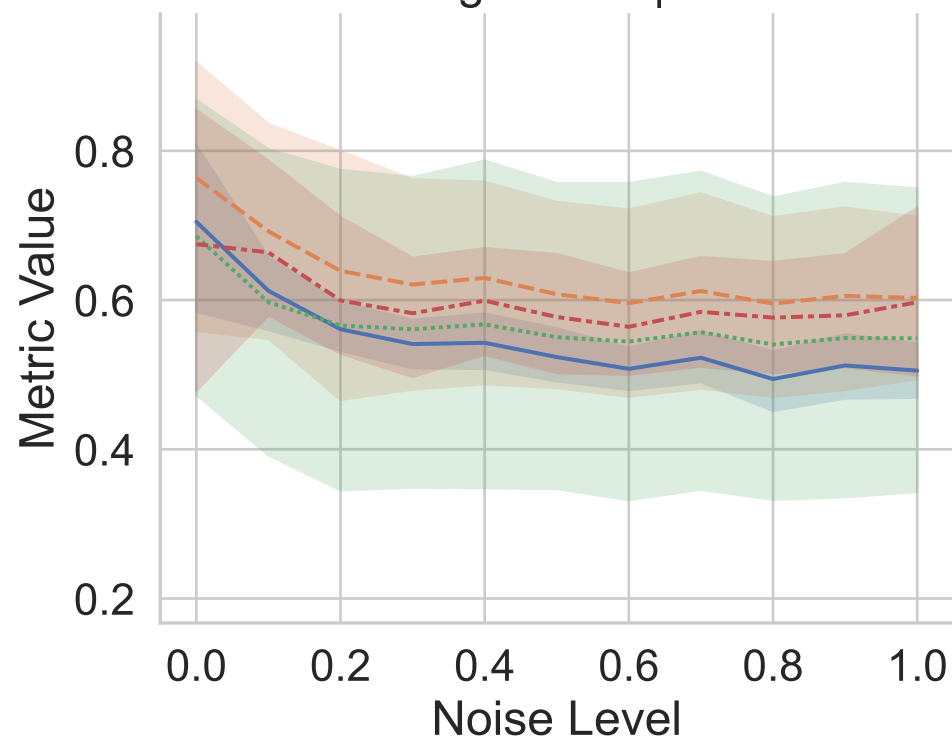
Equal Opportunity | RF



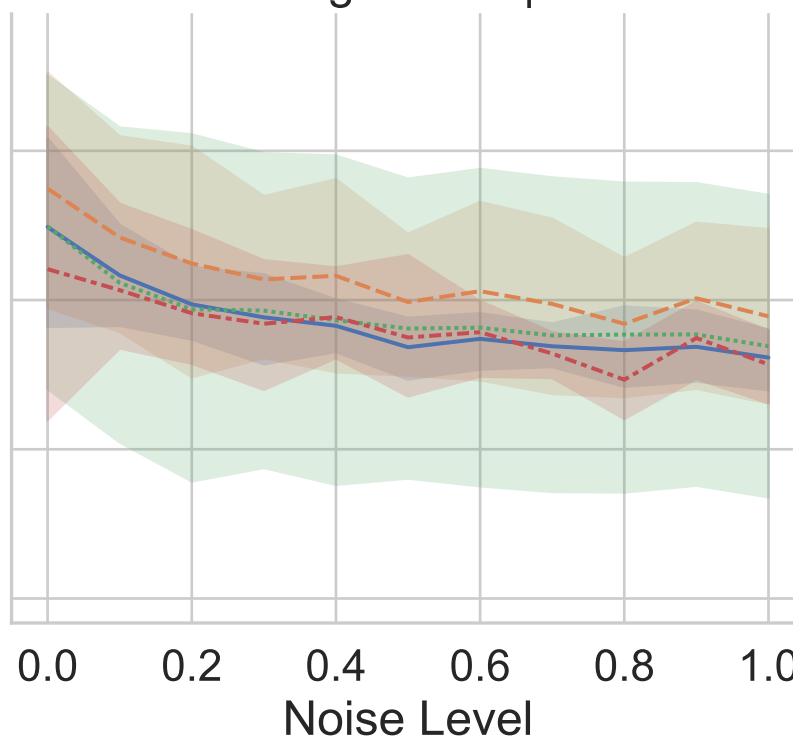
Equal Opportunity | MLP



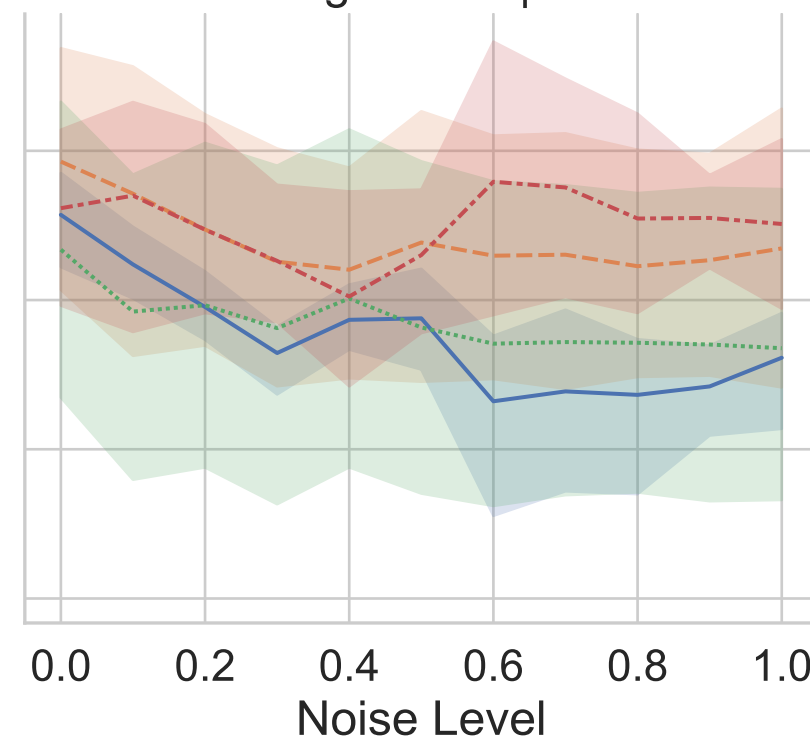
Average Odds | XGB



Average Odds | RF



Average Odds | MLP



Metric

— Accuracy

- - F1

... Precision

- - - Recall