

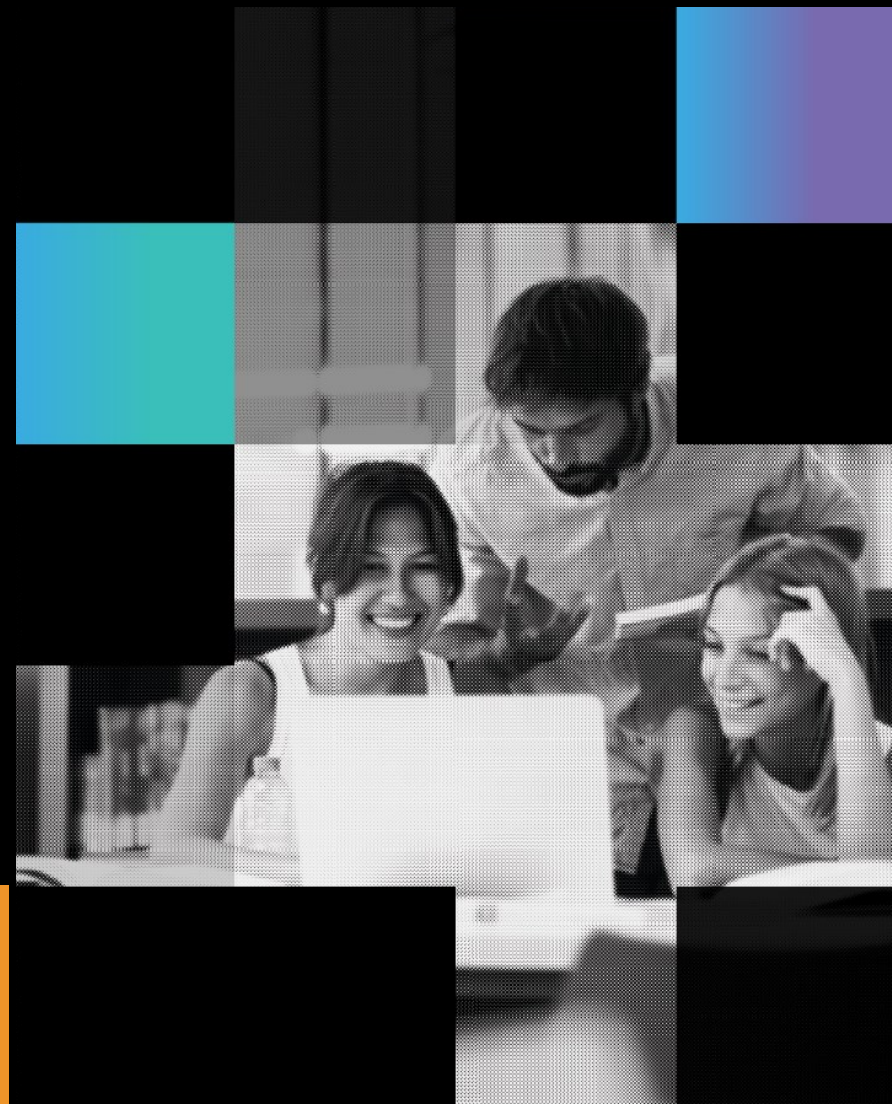


Tecnologia para  
o conhecimento

# FCCN

— serviços digitais fct

 <sup>fct</sup>  
ptcris



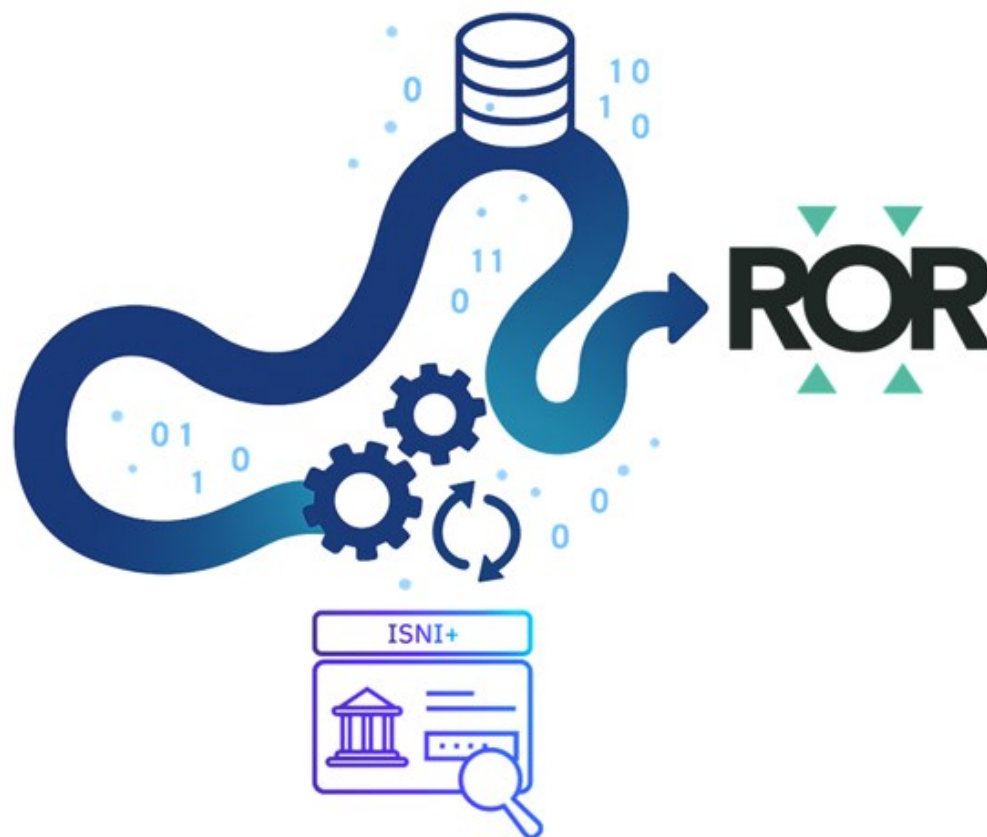


Tecnologia para  
o conhecimento

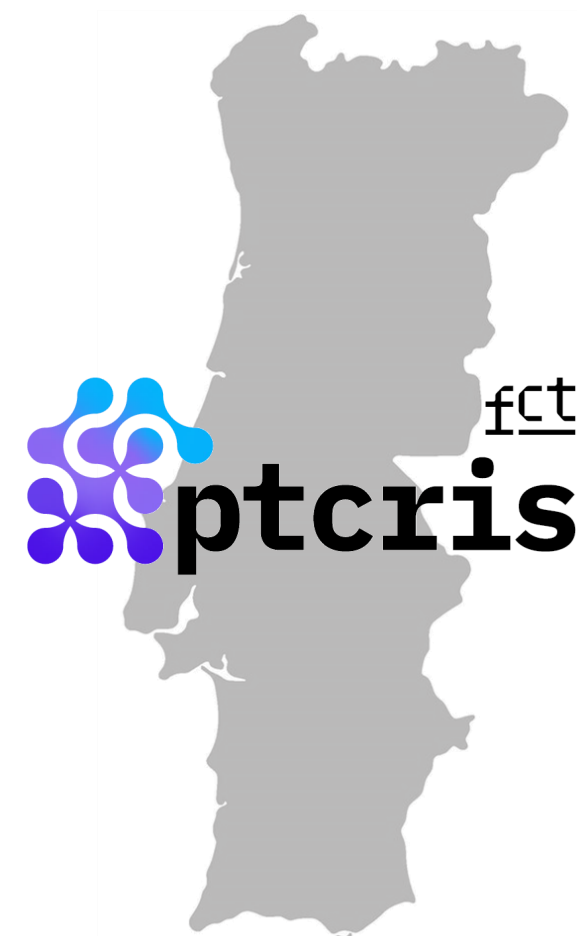


# Organizational Identifiers in the Portuguese Scientific Ecosystem: The Transition from ISNI+ to ROR

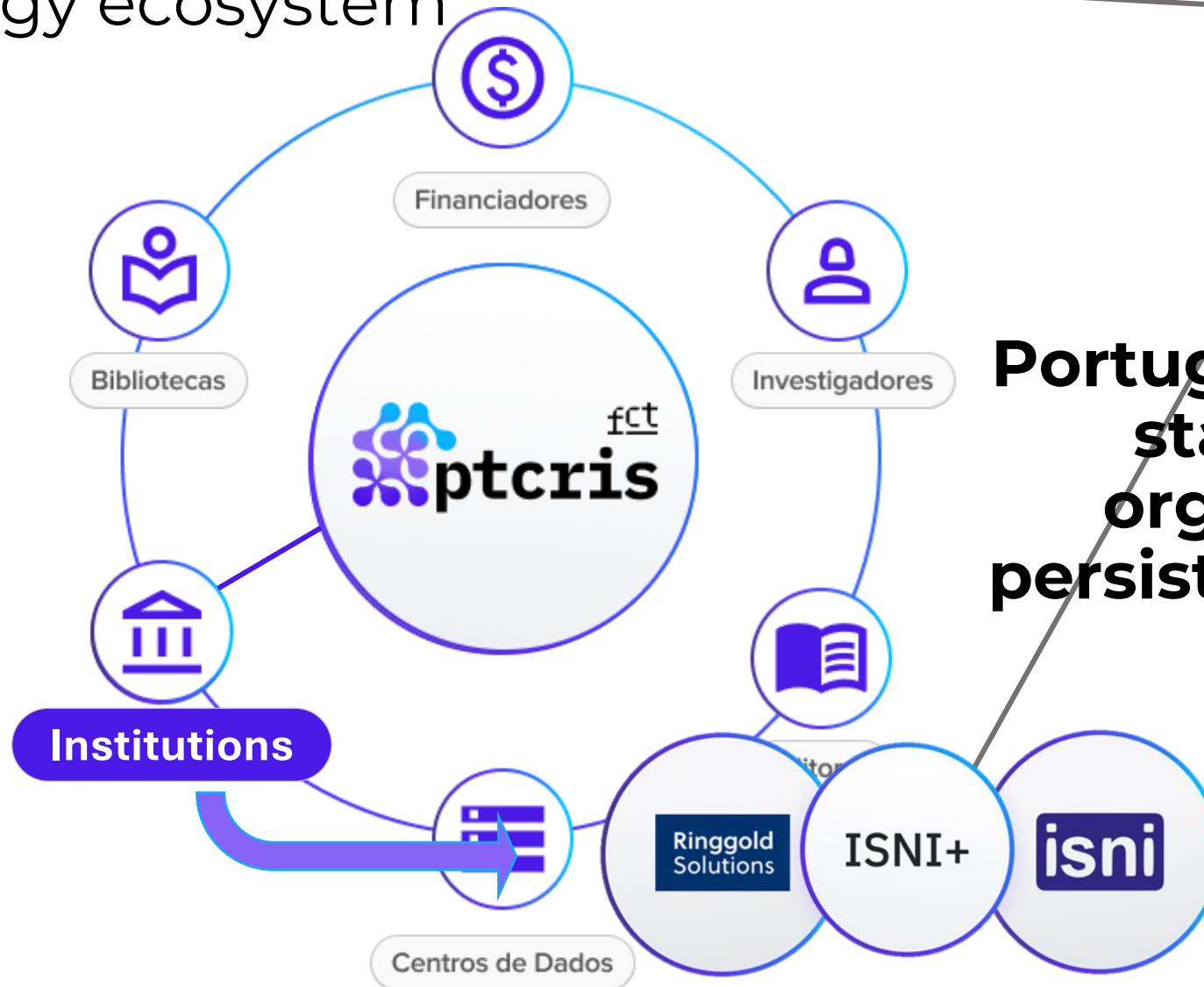
Diagnosis  
and  
Future



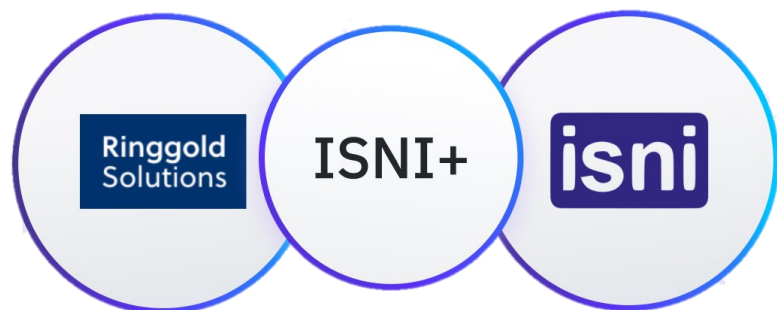
# Open Science and the role of PTCRIS



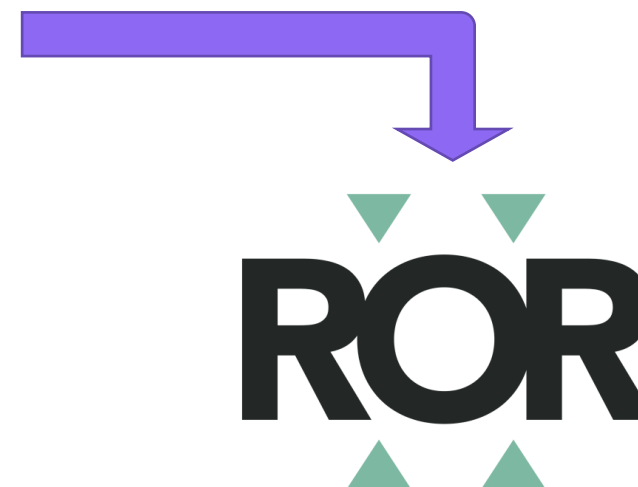
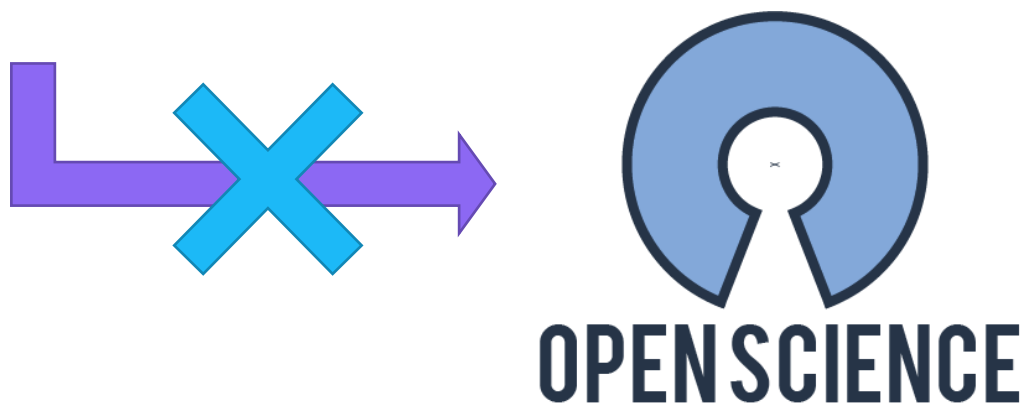
# Portuguese Science and Technology ecosystem



**Portuguese adopted  
standard for  
organizations'  
persistent identifiers  
(PIDs)**



Proprietary and comercial  
infrastructure

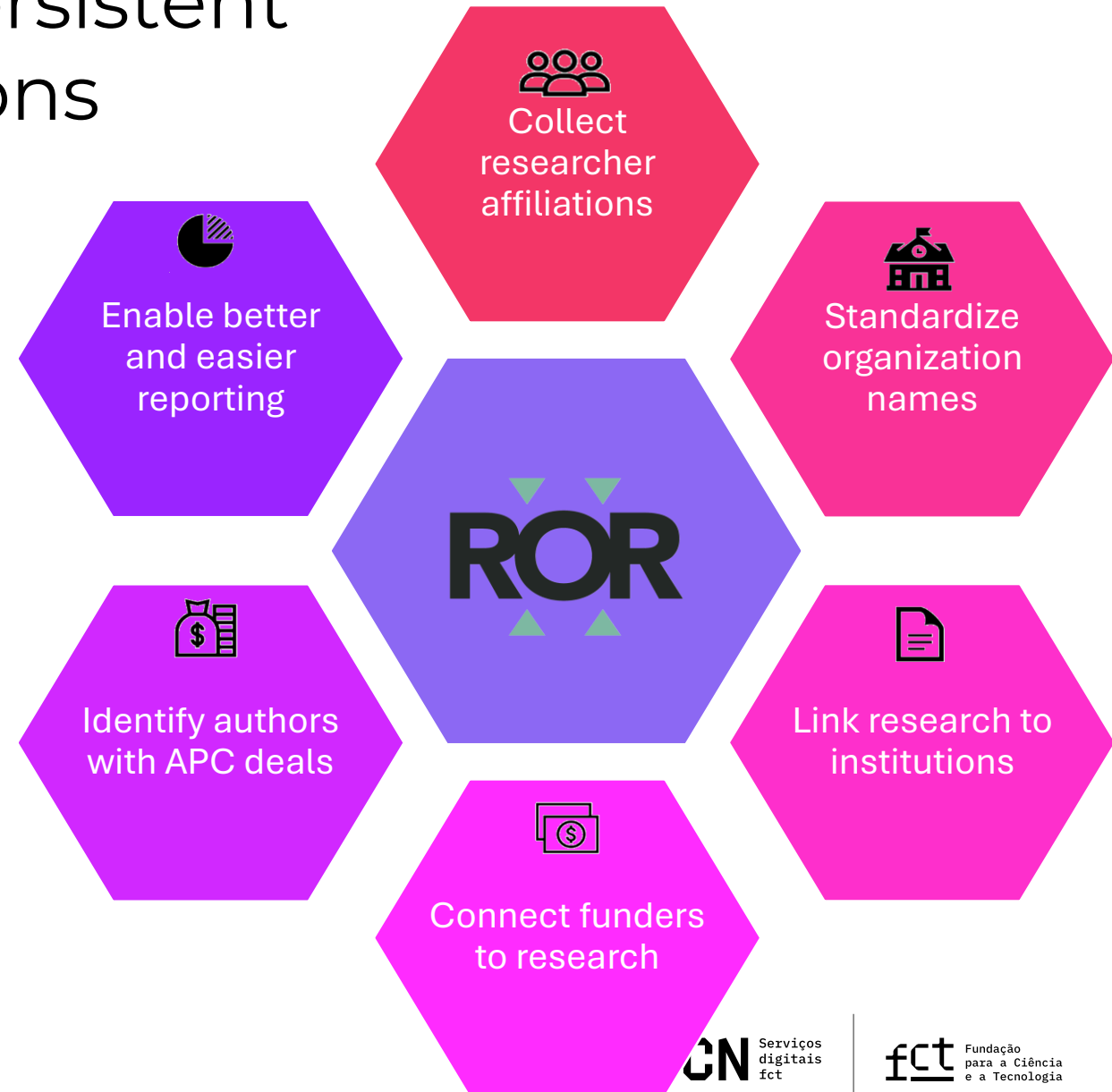


Community-driven  
Open registry

# ROR: global, community-led registry of open persistent identifiers for organizations

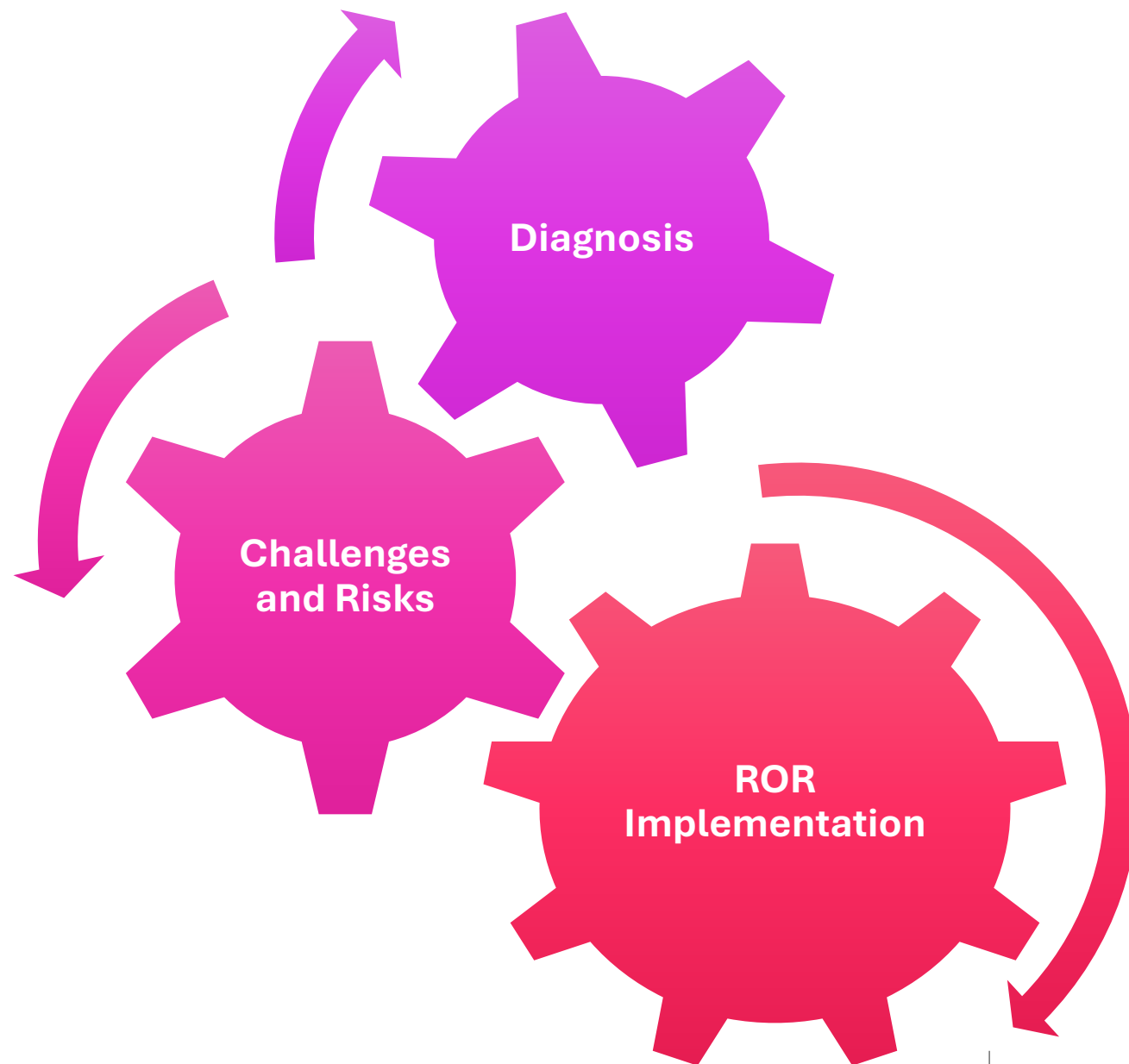


- Non-comercial registry (CC0)
- Community-driven initiative (DataCite, California Digital Library, CrossRef)
- More than **116.000** organization registries (v1.65: [10.5281/zenodo.15343380](https://doi.org/10.5281/zenodo.15343380))
- Integrators: DataCite, CrossRef, ORCID, OpenAlex, Zenodo, Web of Science



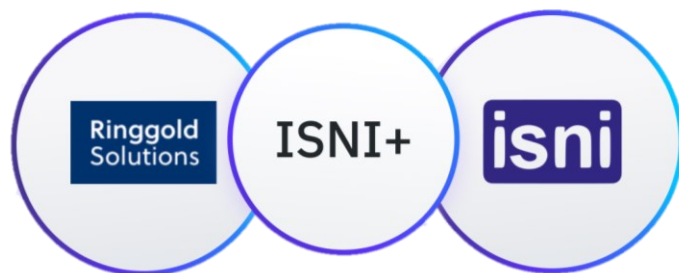


# ISNI+2ROR Transition Plan

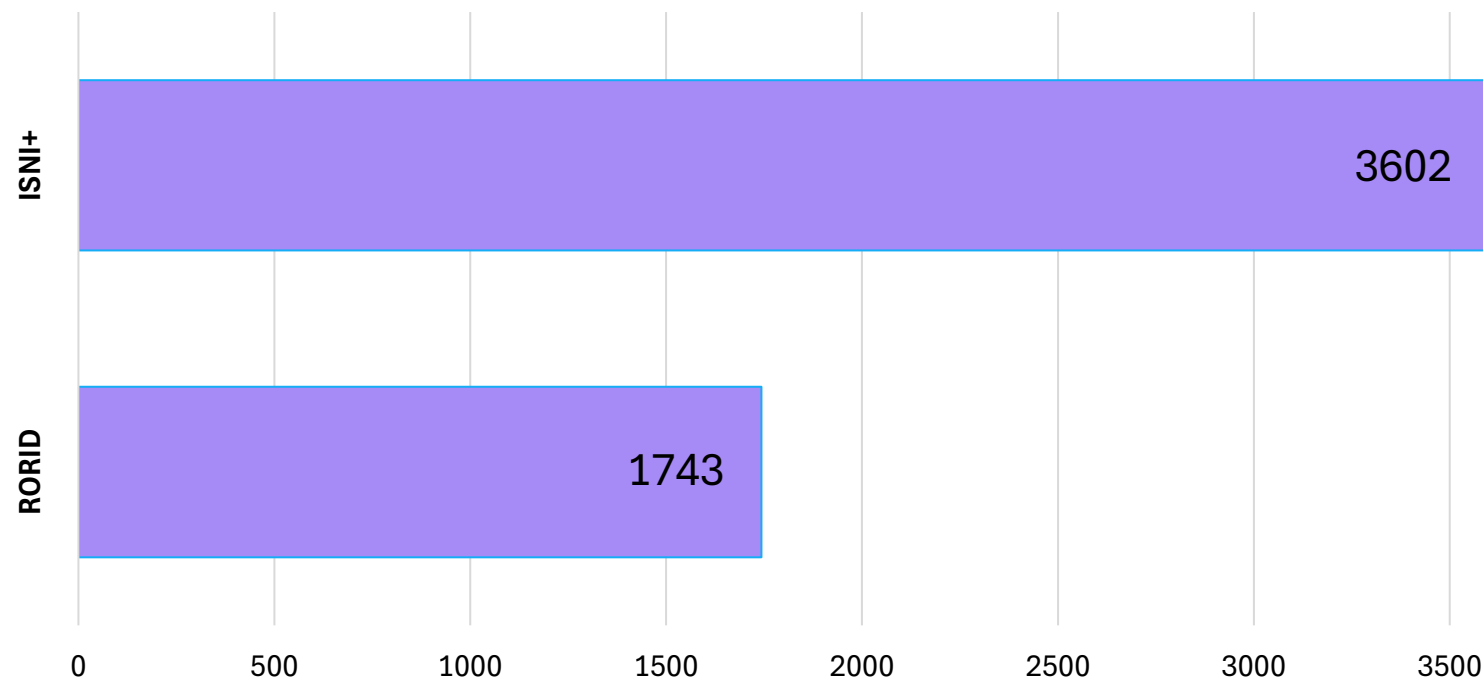




# Assessment of ROR representativeness in Portugal



Representation of Portuguese organizations on  
ISNI+ and ROR systems

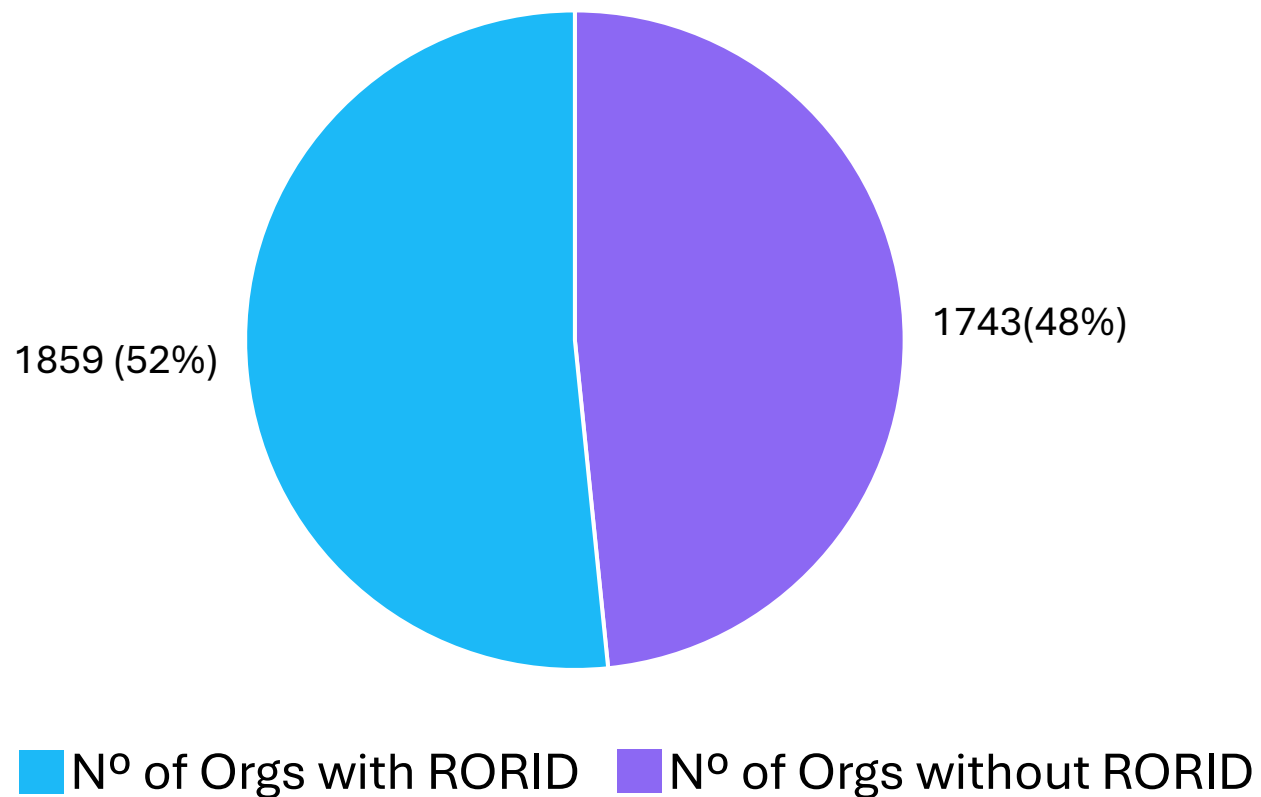






# Assessment of ROR representativeness in Portugal

Number of Portuguese organizations with RORID



More than **180**  
records with  
metadata  
inconsistencies:





# Incorrect designation: name and acronym

 <https://ror.org/050w2g362>

**Inovamais**

**Name and acronym to be considered:**

- Innovation Services SA, INOVA+

## ORGANIZATION TYPES

Company

## LOCATIONS

Matosinhos Municipality (GeoNames ID [2737824](#)), Portugal

## WEBSITE

<http://inovamais.eu/en/>

## OTHER IDENTIFIERS

GRID grid.9116.f

For organizations located in Matosinhos, a registry inconsistently uses two designations for the same location:

- Matosinhos
- Matosinhos Municipality

Some record data is not displayed in this view. [See JSON view for full record data](#)

Record last modified 2024-12-11. Is there an issue with the data on this record? [Suggest a change](#)



# Incorrect or invalid URLs

 <https://ror.org/01mvsby80>

## Agencia de Inovacao

### ORGANIZATION TYPES

Funder, Other

### OTHER NAMES

#### Acronyms

ANI

#### Labels

Agência Nacional de Inovação (pt)

### LOCATIONS

Porto (GeoNames ID [2735943](#)), Portugal

### WEBSITE

<http://www.adi.pt/>

### Correct URL:

- [www.ani.pt](http://www.ani.pt)

### OTHER IDENTIFIERS

GRID [grid.423753.4](#)

Crossref Funder ID [501100007434](#)

Some record data is not displayed in this view. [See JSON view for full record data](#)

Record last modified 2024-12-11. Is there an issue with the data on this record? [Suggest a change](#)

# Incorrect location

 <https://ror.org/01fqijt38>

## Instituto Nacional de Investigação Agrária e Veterinária

### ORGANIZATION TYPES

Facility, Funder

### OTHER NAMES

Acronyms

INIAV

### RELATIONSHIPS

#### Child Organizations

Estação Nacional de Fruticultura Vieira Natividade

Some record data is not displayed in this view. [See JSON view for full record data](#)

Record last modified 2025-04-28. Is there an issue with the data on this record? [Suggest a change](#)

### LOCATIONS

Lisbon (GeoNames ID [2267057](#)), Portugal

### WEBSITE

<https://www.inia.vpt>

### OTHER IDENTIFIERS

GRID [grid.420943.8](#)

ISNI [0000 0001 0190 2100](#)

Crossref Funder ID [100017256](#)

### Location in ISNI+:

- Oeiras, Portugal



# Loss of hierarchical structure

 <https://ror.org/046ggxs83>

## Instituto Dom Luiz

### ORGANIZATION TYPES

Facility, Funder

### LOCATIONS

Lisbon (GeoNames ID [2267057](#)), Portugal

### WEBSITE

<http://idl.campus.ciencias.ulisboa.pt>

### OTHER IDENTIFIERS

ISNI [0000 0004 0475 6243](#)

Crossref Funder ID [501100011656](#)

Wikidata [Q105169349](#)

### RELATIONSHIPS

Parent Organizations

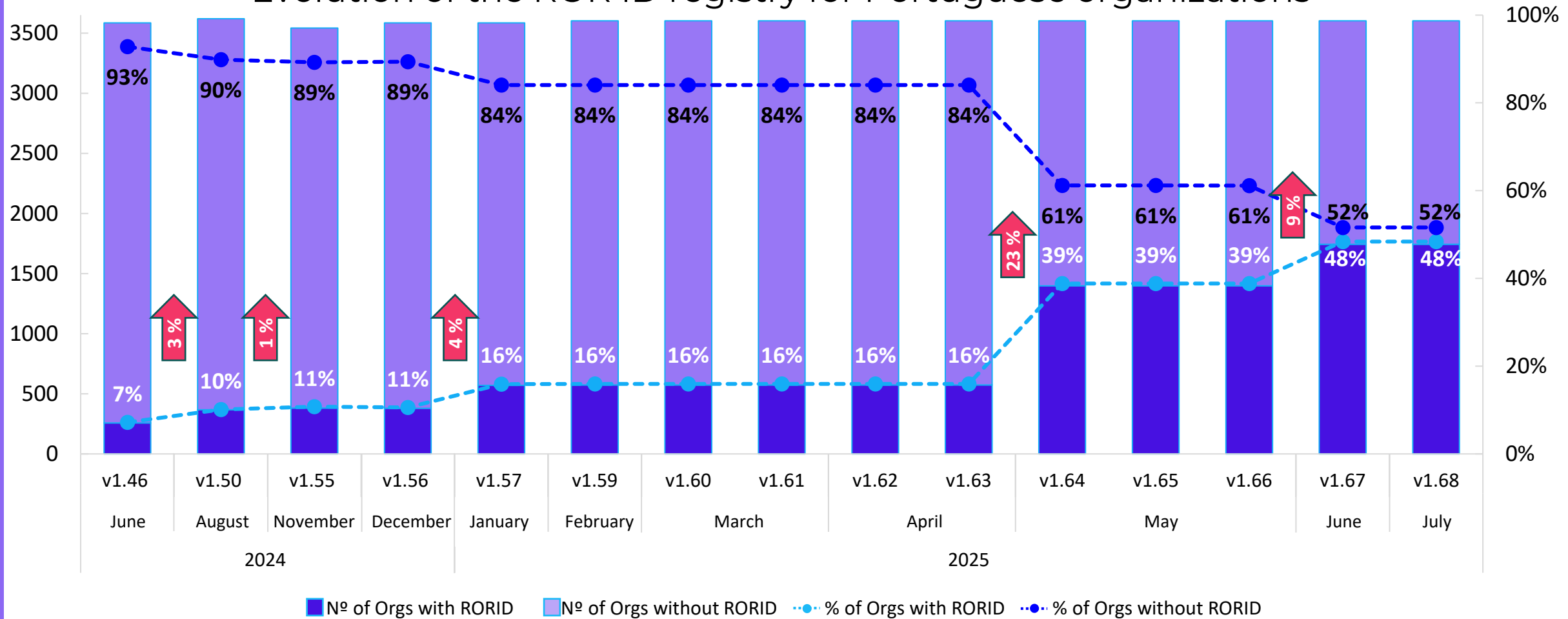
[University of Lisbon](#)

### Missing Level 2 Parent Organization:

- Universidade de Lisboa: Faculdade de Ciências (ISNI 0000 0004 0385 4247)

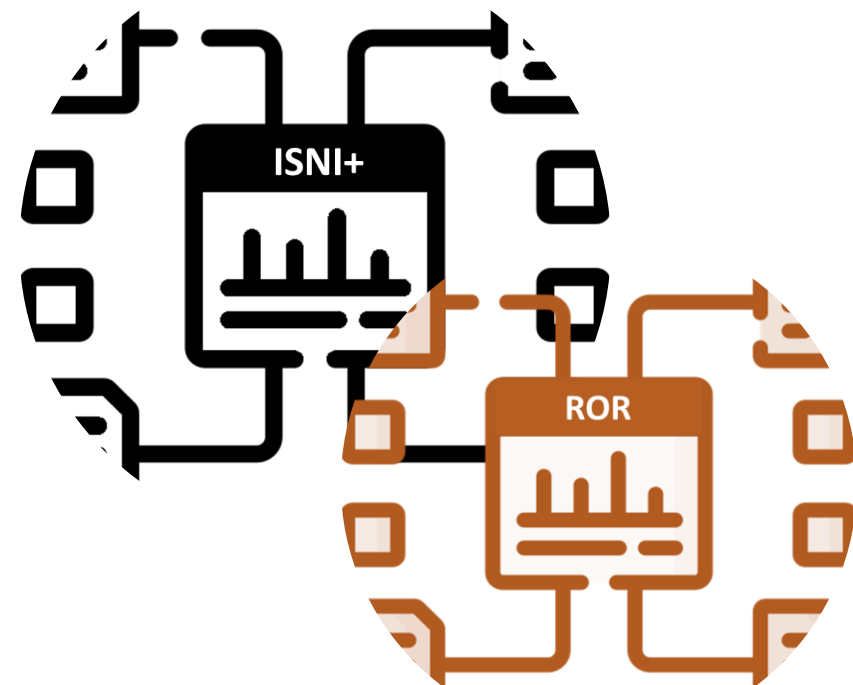


## Evolution of the ROR ID registry for Portuguese organizations





# Impact and Risk assessment



Evaluation of the compatibility of the ISNI+ and ROR data model



Evaluation of the transition impact on PTCRIS services:

- **CIÊNCIAVITAE;**
- SciPROJ;
- Indicadores Institucionais





# Indicadores Institucionais: A practical example of transition challenges

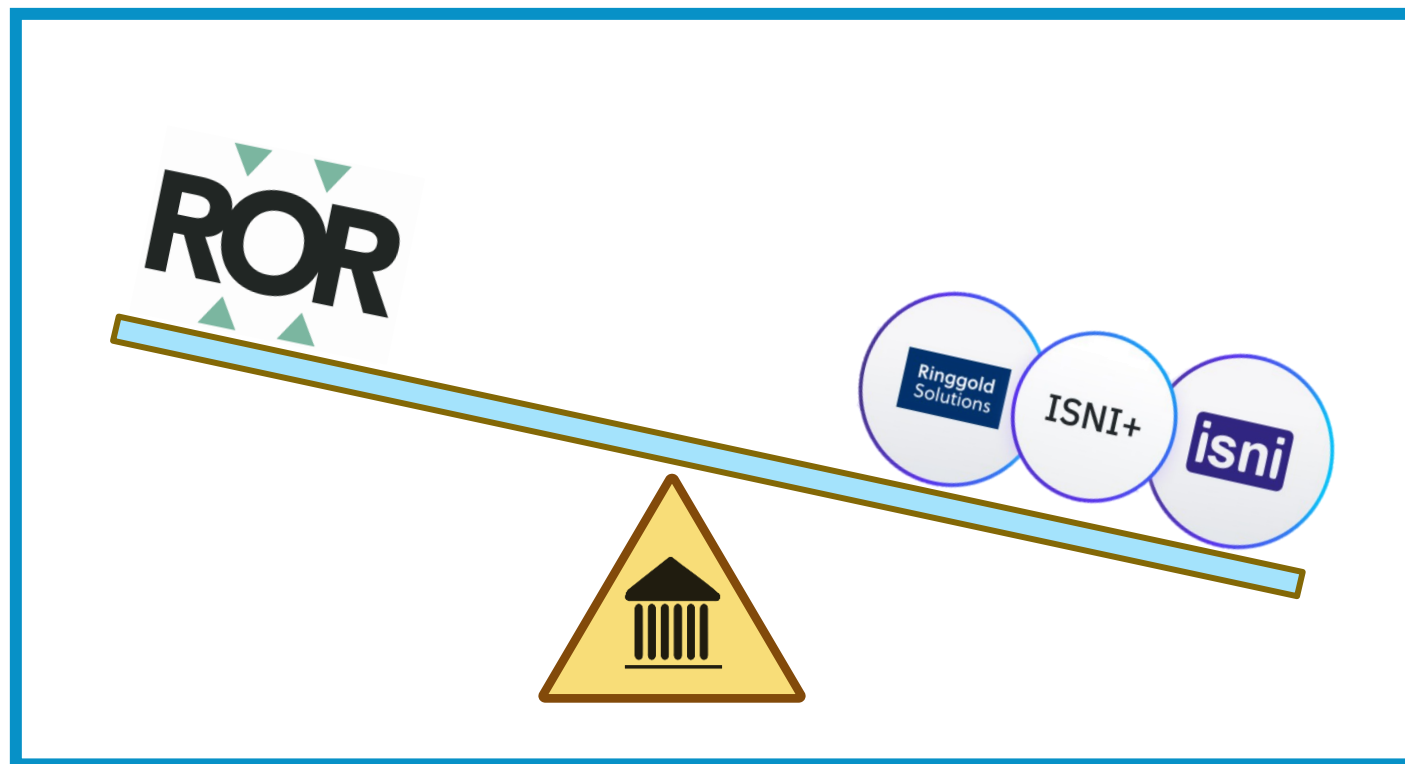


**68**

Subscribers

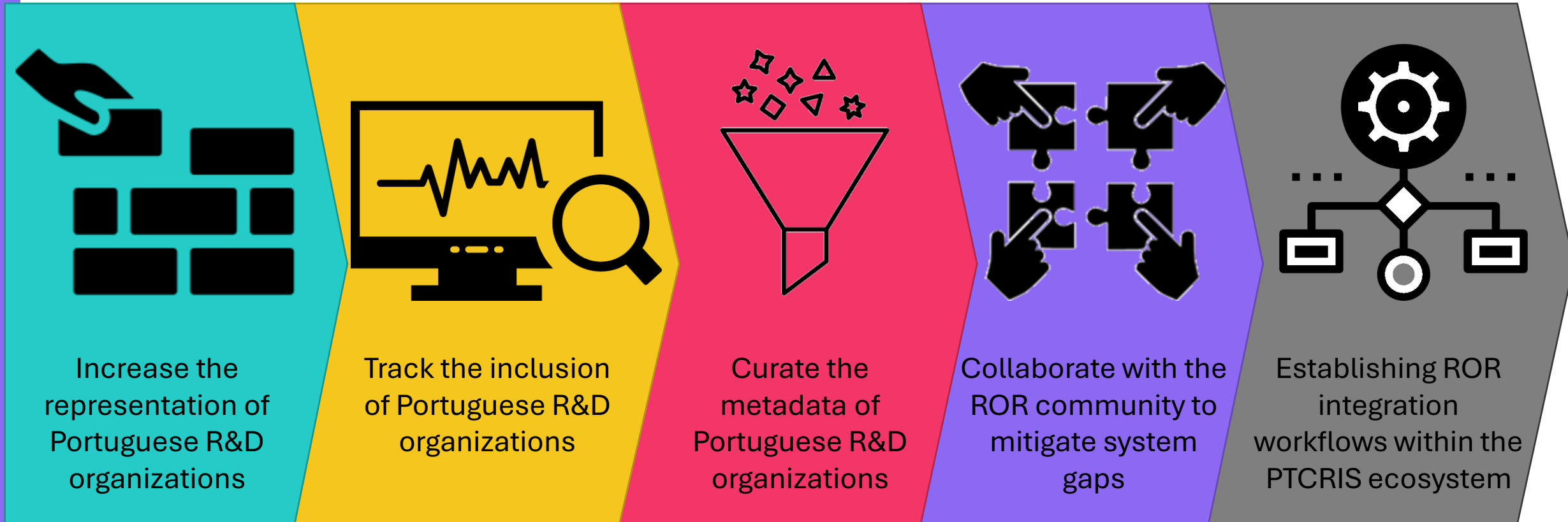
**22**  
(32%)  
without RORID

**46**  
(68%)  
with RORID





# Step by step integration of ROR into PTCRIS ecosystem





# Thank you.

**Sara Dias**

sara.dias@fccn.pt

 C41A-6CA5-4D84

 0000-0003-1768-1562

