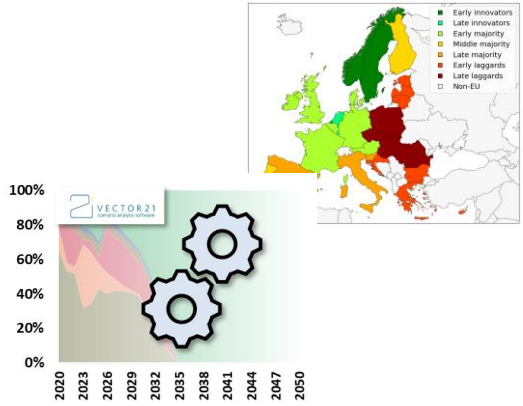
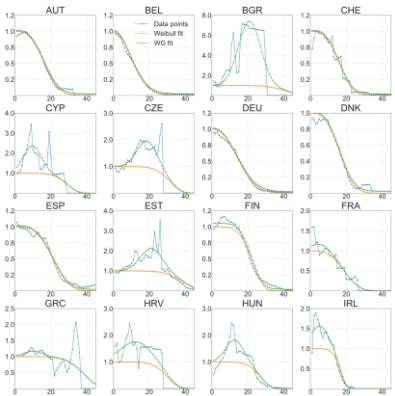


Simulated new vehicle registrations



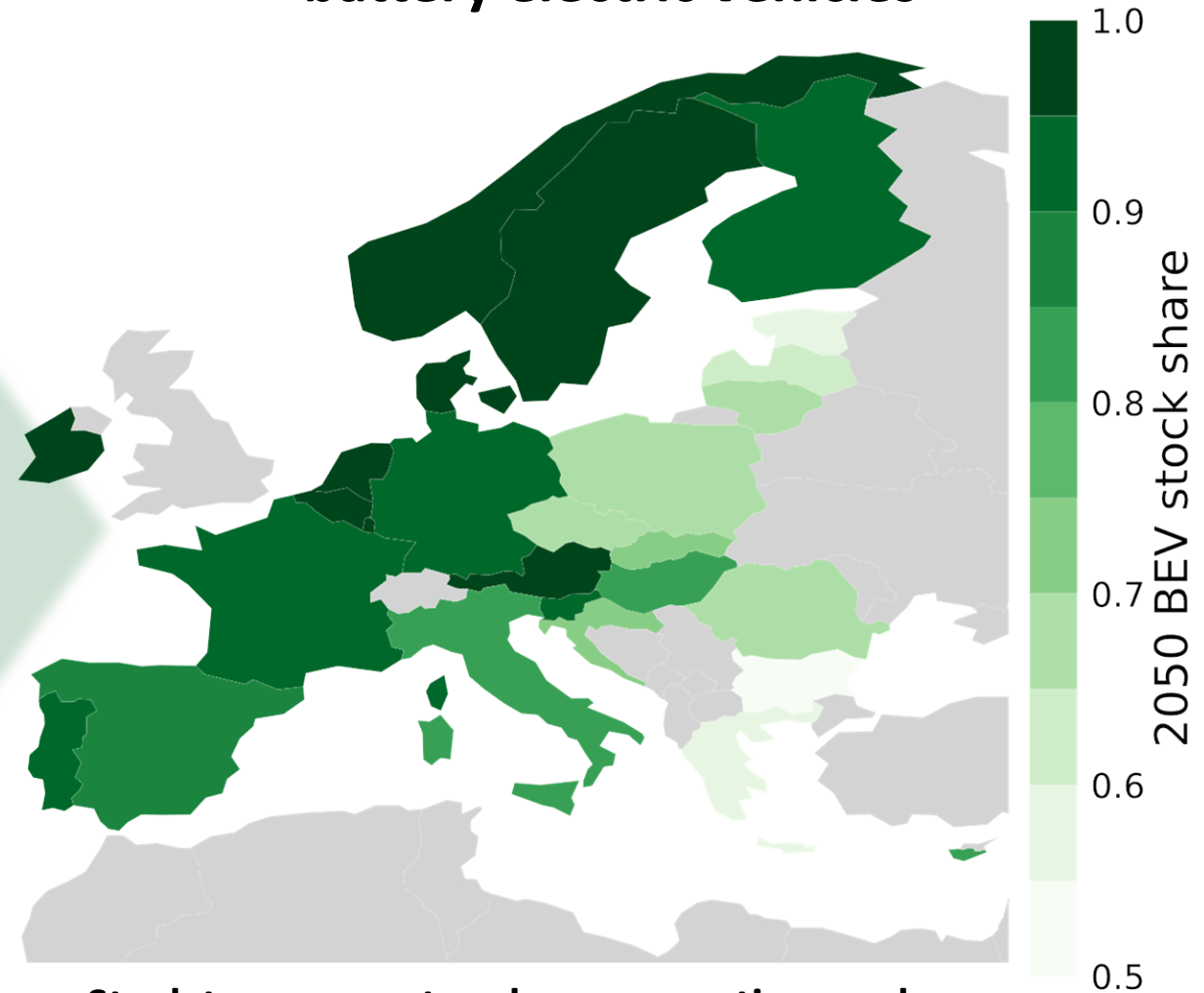
+

Cumulative survival probability (CSP) curves



A modular approach consisting in a clustering and utility maximization model plus country-specific CSP curves allows to estimate the BEV fleet composition for all EU member states individually.

Development of the European fleet of battery electric vehicles



- Stock turnover rates change over time and have a strong effect in future BEV stock shares
- Significantly different levels of passenger car fleet electrification across EU Member States