

with a dark dash above it near the base : secondaries pinkish brown, paler towards the base.

♀. Like the male in all respects.

Expanse, ♂ 44, ♀ 46 mm.

The types from Dinawa are in my collection ; the species flies in August.

Leucania cryptargyria, sp. n.

♂. Head pale rufous brown ; collar pale purplish brown, with four dark lines horizontally across ; patagiæ reddish brown, tinged with grey ; abdomen pale ochreous brown ; palpi pale purplish brown, pale ochreous internally ; legs pale ochreous brown, striped with reddish ; spines black at the base ; mid legs with tibiæ fringed with long pale hair ; an abdominal tuft of longish black hair at the base. Primaries pale ochreous brown, tinged with reddish in the cell and up to the apex, to which point the darker area tapers gradually ; costa broadly whitish grey ; a double postmedial row of black points ; termen slightly clouded ; the veins are more or less irrorated with black scales and the inner marginal area has a patch of similar-coloured scales : secondaries warm brown, slightly pinkish, with the costa and inner margin paler. Fringes pale pinkish, outer half white. Under surface : both wings uniform lustrous metallic silver, with a blackish spot on the costa a third from the apex.

Expanse 48 mm.

The type is in my collection from Dinawa.

XX.—On a new Vole from Kashmir.

By J. LEWIS BONHOTE, M.A.

THE collection of voles sent home from Kashmir by Col. A. E. Ward contains three specimens of a most interesting new species allied to *Microtus nivalis*, for which I propose the name

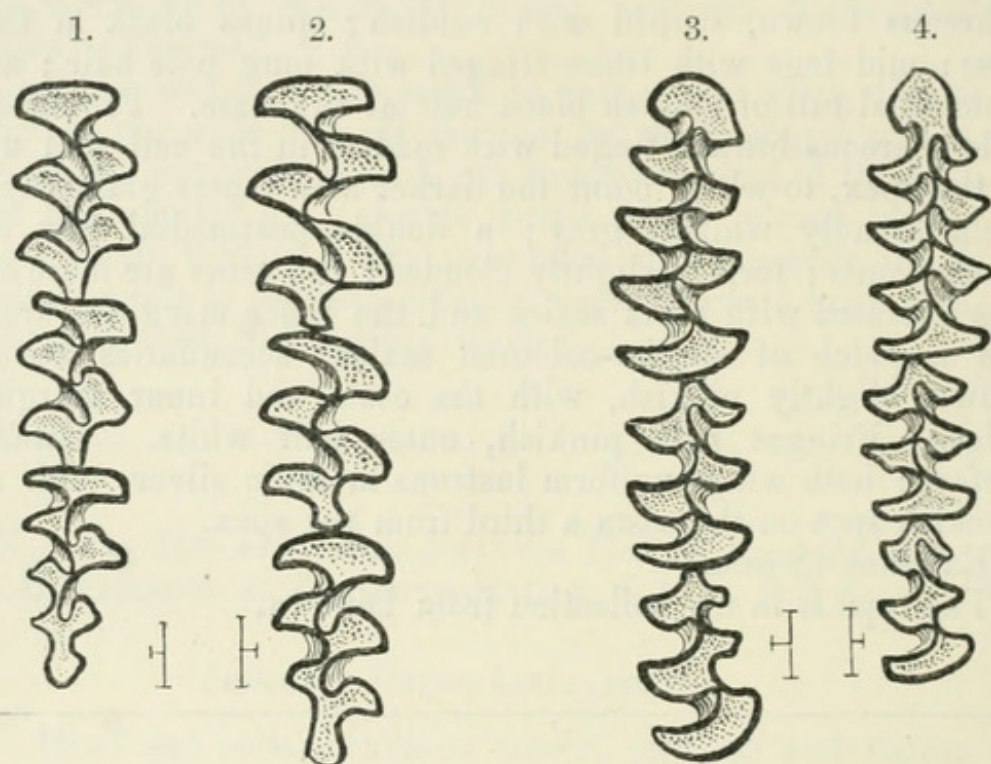
Microtus imitator, sp. n.

Differs externally from *M. nivalis* only in its smaller size and slightly browner coloration.

General colour above grizzled greyish brown, each hair being dark at its base, with a light subterminal portion and a

black tip; interspersed among these are longer pure black hairs. The colour is deepest across the back and paler on the flanks and cheeks. Underparts whitish, tinged with yellow; hairs with dark bases. Feet greyish. Tail long and bicolor, brown above, white below. Ears moderate, rounded, and clothed with short hairs similar in colour to the upper parts.

The skull is slightly smaller and flatter than in true *nivalis*, but the brain-case is rather more rounded at the sides. The auditory bullæ smaller, less elongate, and well rounded, thus slightly compressing the basioccipital.



1. Upper right (*imitator*). 2. Upper right (*nivalis*). 3. Lower right (*nivalis*). 4. Lower right (*imitator*).

Teeth generally resembling those of *M. nivalis*, with two important exceptions. In the species under consideration the spaces are rather narrower and smaller than in *nivalis*, the third molar of the upper jaw has four external angles instead of three, and the posterior lobe of the same tooth has a slight constriction on its inner edge, tending to form a fourth interior angle. In the lower jaw the anterior arrow-shaped head of the first molar is not symmetrical, but is elongated on its external side to form an oblong rounded space; a tendency towards this shape is found, so Dr. Forsyth Major tells me, in a specimen of *nivalis* from Mount Hermon, but

is never found among the western forms. The anterior external space of the third lower molar is similarly modified.

Dimensions. Head and body 105 mm.; tail 45; hind foot 15; ear 12.

Skull. Length of palate 12 mm.; length of nasals 8; length of molar series 6; width of brain-case above posterior roots of zygomata 13.

Hab. Tullian, Kashmir. Alt. 11,000 feet.

Type. B.M. 5. 1. 5. 12. ♂ ad. Tullian, Kashmir. Collected by Col. A. E. Ward, 14th July, 1903.

In outward appearance, as well as in skull-characters, this vole is undoubtedly allied to *M. nivalis* of Europe, which, however, has not hitherto been found east of the Caucasus; so that its discovery in Kashmir forms a considerable eastward extension of this group. Its smaller size, slightly browner coloration, and dental characters enable it to be distinguished easily from the typical *nivalis*.

XXI.—*A new Ficalbia from West Africa.*

By F. V. THEOBALD, M.A.

Ficalbia nigripes, sp. n.

Head black. Thorax pale bright yellowish brown, with two parallel dark lines behind. Abdomen deep brown, with narrow pale basal bands. Legs, antennæ, palpi, and proboscis deep blackish brown. Wings with pale scaled veins and with deep brown costa.

♂. Head clothed with flat deep black scales and black upright forked scales. Antennæ deep blackish brown, with paler dusky bands and deep brown plume-hairs. Proboscis deep blackish brown, swollen apically; palpi small, deep brown.

Thorax pale brown, clothed with long, narrow, curved, pale, dull yellowish scales, except for two parallel bare lines, and with two broad lines of long, narrow, curved, black scales on each side of the bare space in front of the scutellum and extending past it; two rows of long black bristles and numerous black ones over the roots of the wings; scutellum clothed with flat black scales and with brown border-bristles; metanotum deep brown; pleuræ pale ochreous.

Abdomen deep blackish brown, with white basal bands and brown lateral hairs.



Bonhote, J. Lewis. 1905. "XX.—On a new Vole from Kashmir." *The Annals and magazine of natural history; zoology, botany, and geology* 15, 197–199.

<https://doi.org/10.1080/03745480509442822>.

View This Item Online: <https://www.biodiversitylibrary.org/item/63423>

DOI: <https://doi.org/10.1080/03745480509442822>

Permalink: <https://www.biodiversitylibrary.org/partpdf/59240>

Holding Institution

University of Toronto - Gerstein Science Information Centre

Sponsored by

University of Toronto

Copyright & Reuse

Copyright Status: NOT_IN_COPYRIGHT

This document was created from content at the **Biodiversity Heritage Library**, the world's largest open access digital library for biodiversity literature and archives. Visit BHL at <https://www.biodiversitylibrary.org>.