

# Drilling through USGS Library Materials for GIS Nuggets

Emily C. Wild, Librarian (Physical Scientist)

ESRI Federal GIS, February 24-25, 2016, Washington, D.C.



# USGS Geospatial Materials

- How long has the USGS been involved in GIS? [Since about 1970](#)
- Examples: Digital Line Graph (DLG) and Digital Elevation Model (DEM)
- Early datasets/reports: [Pre-USGS](#), [Spirit Leveling](#), DDS-01 (1991) NURE

## Instruction/outreach: how to use USGS products & find bibliographic materials

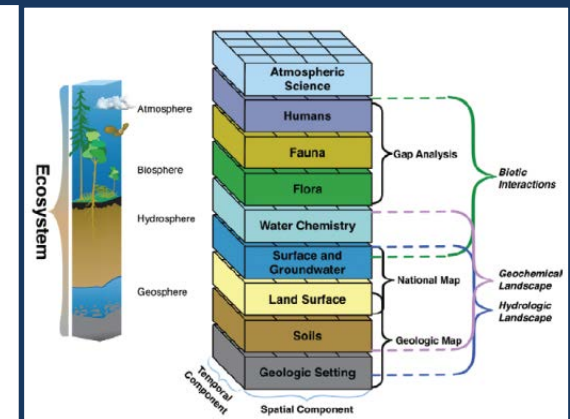
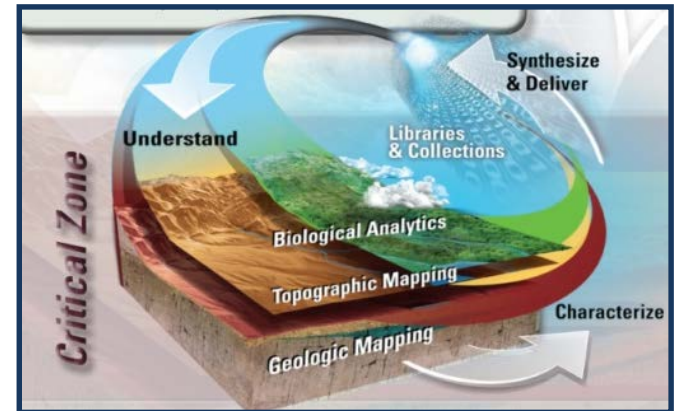
1. GIS is used: To make report figures, for analysis, create maps, & datasets
2. Pre-USGS and USGS = 1867-present
3. National & International = 1500's-present
4. [Public Access to USGS Scientific Research](#)

### USGS Core Science Systems:

[http://www.usgs.gov/core\\_science\\_systems/](http://www.usgs.gov/core_science_systems/)

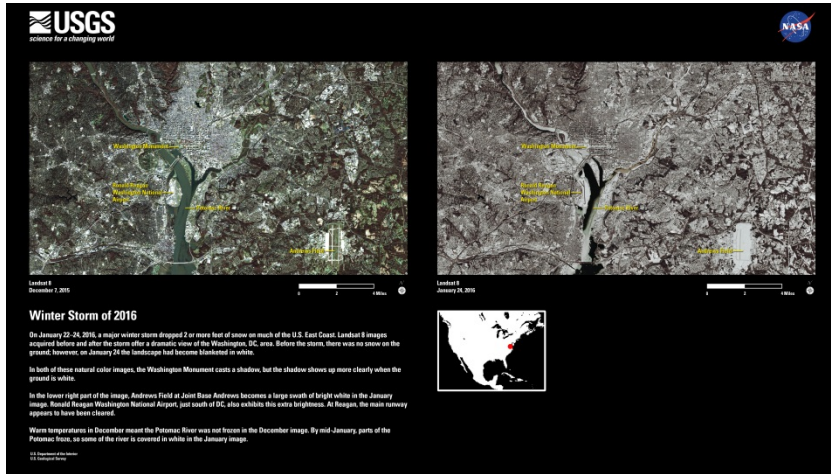
#### National Programs

- [Core Science Analytics, Synthesis, & Libraries](#)
- [Libraries](#)
- [Geological & Geophysical Data Preservation](#)
- [Geospatial](#)
- [Geologic Mapping](#)

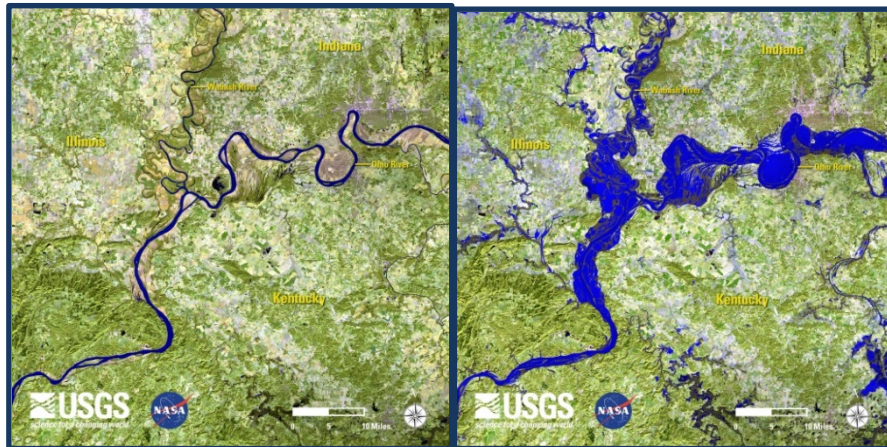




# USGS Geospatial Materials



Landsat 8, December 7, 2015 and January 24, 2016  
Winter Storm of 2016, Washington, D.C.



Landsat 8, December 8, 2015 and January 1, 2016  
New Year's Flooding in the Midwest

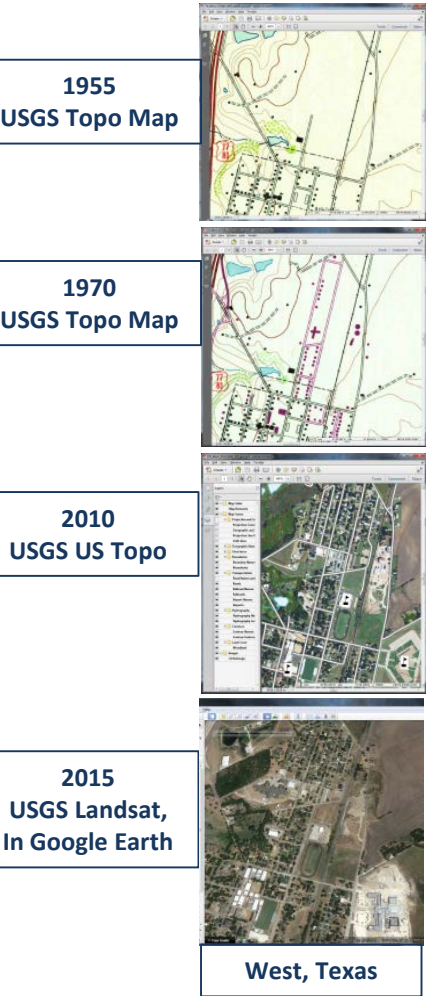
[Folios of the Geologic Atlas \(1892-1945\)](#)

[National Geologic Map Database](#)

[Mines & Minerals Database](#)



USGS data/maps usable in Google Earth  
D.C. Geologic Folios, [MRDS](#), [GQ-1748](#)



- Library Inquiries within the USGS

- Emergency Response: Earthquakes, Floods, Droughts, Water Quality, Mines, Energy, Human Health, Wildlife Health
- Research of Science on Earth (Land, Ocean) and other Planets: Subjects = Biology, Geology, Geography, & Water

- **Library Inquiries from Federal Government**

- Disasters: Explosions, Chemical Spills, Floods, Health
- Scientific Research: Local, State, National, International
- Legal: Disasters, Names, Land, Water, Oil, Gas, Minerals
- USGS Data Referenced in Legislation & Legislative Hearings

- **Library Inquiries from Industry & Communities**

- Land-Use Change: Hazards, Permitting, Zoning, Preservation
- Legal: Names, Land, Water, Oil, Gas, Minerals, Disasters
- To Understand the Science: Local, Regional, National, World

Ex: Induced Earthquakes, Toxic Substances, Produced Waters





NURE Collection,  
Microfiche Maps

# USGS Library: Finding & Using Materials

- USGS Library Classification: (1) Subjects , and (2) Geographic Area
- **Print Publications Indexes**: USGS, USBM, USAEC, States, Countries  
Ex: USGS B-222, USBM 1910-1960, Bibliography & Index of Colorado Geology, 1875 to 1975, USGS reports for Kingdom of Saudi Arabia

- Online Library Catalogs: Worldcat, USGS, Library of Congress  
[ USGS Libraries on OCLC codes for ILL = GIS, GID, GIM, GIG, FZU ]

- USGS Library's Public Access to Online Content:

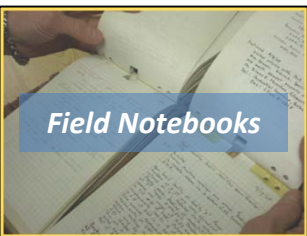
Citation Indexes & Full Text : Ex. AAPG Datapages , GeoScienceWorld , Lyell

- Library of Congress: Classification , Subject Headings
- **Materials: Journals, Field Guides, Guidebooks, CDs, Historical Photos (10% online) & Field Records, Restricted/Classified/OUO, Declassified**
- USGS staff publish in USGS series & Non-USGS series (Journals & Books)

Percentages of USGS authored publications that were published as USGS series :  
2014 = 38% ; 2005 = 36% ; 1995 = 63% ; 1985 = 62% ; 1975 = 77% ; 1965 = 88% ;  
1955 = 86% ; 1945 = 80% ; 1935 = 55% ; 1925 = 96% ; 1915 = 98% ; 1905 = 90% ;  
1895 = 79% ; and, 1885 = 100%



US Topo, Geopdf



Field Notebooks



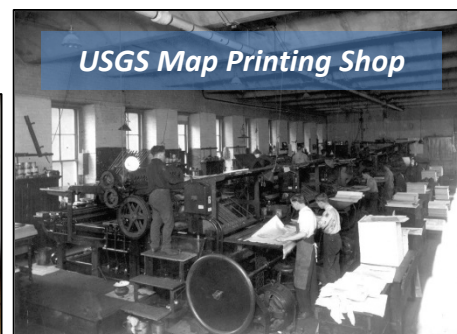
GIS Publications



GIS Data on CDs



USGS Publication Indexes



USGS Map Printing Shop



USGS Library, 1917



Manatee Surveys



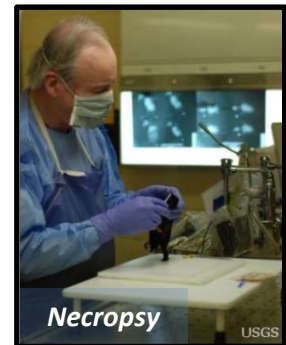
2015 Nepal Earthquake



Spider Unit, GPS



Oso Landslide



Necropsy



# USGS Geospatial Sources

- ❖ [ScienceBase Catalog](#)
- ❖ [The National Map](#) & [Long-Term Archive](#)
- ❖ [The National Atlas, 1997-2014, 260 Datasets](#)
- ❖ [Emergency Operations Portal](#)
- ❖ [USGS-ESRI Historical Topographic Map Explorer](#)
- ❖ [National Geologic Map Database](#)
- ❖ [Publications Warehouse](#)
- ❖ [Geographic Names \(GNIS\)](#) (History, Legislation)
- ❖ [Mineral Resources](#) (Ex. [Mines & Minerals](#) )
- ❖ [National Oil & Gas](#) ; [Worldwide Petroleum](#)
- ❖ [Wildlife Mortality \(WHISPers\)](#)
- ❖ [Active and Historical Wildfires \(GeoMAC\)](#)

## Site Specific Geospatial Sources for Disaster Events:

- ❖ \* [2010 Deepwater Horizon](#)
- ❖ \* 2011 Japan = [Earthquake](#) ; [Fukushima Dai-ichi](#)
- ❖ \* [2011 M5.8 Virginia Earthquake](#)
- ❖ \* [2013 M2.1 Explosion – 1km NNE of West, Texas](#)
- ❖ \* [2015 Gold King Mine Release](#)
- ❖ \* 2015 Nepal Earthquake Posters: [April](#) & [May](#)



Deepwater Horizon



Fukushima Dai-ichi



Virginia Earthquake



Sampling, Gold King Mine Release



# Thank You!

For more information: ASK USGS!

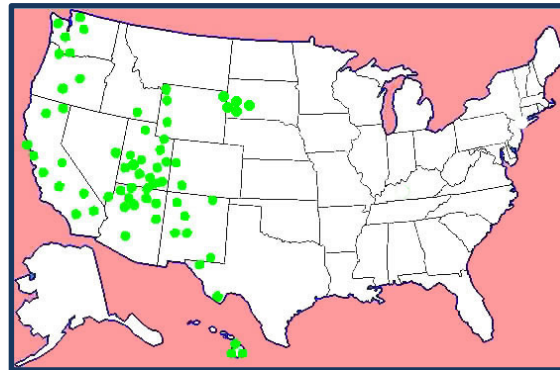
1-888-ASK-USGS or <http://answers.usgs.gov/>

Ask-A-Librarian: [http://library.usgs.gov/ext\\_request.html](http://library.usgs.gov/ext_request.html)

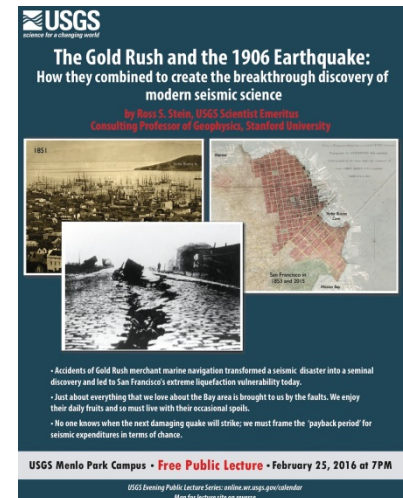


Oblique aerial view of the eruption of May 18, 1980, which sent volcanic ash, steam, water, and debris to a height of 60,000 feet.

Emily C. Wild, Librarian (Physical Scientist)  
U.S. Geological Survey Library, Denver, Colorado  
303-236-1003 or [ecwild@usgs.gov](mailto:ecwild@usgs.gov)  
<https://profile.usgs.gov/ecwild>



Geology of National Parks,  
3D and Photographic Tours



USGS Online Lectures

