



The Mariner's Mirror

Publication details, including instructions for authors and subscription information:

<http://www.tandfonline.com/loi/rmir20>

THE IDENTIFICATION OF MODELS OF MEN-OF-WAR

Gregory Robinson & R. C. Andreson

Published online: 22 Mar 2013.

To cite this article: Gregory Robinson & R. C. Andreson (1913) THE IDENTIFICATION OF MODELS OF MEN-OF-WAR, *The Mariner's Mirror*, 3:1, 18-19, DOI: [10.1080/00253359.1913.10654660](https://doi.org/10.1080/00253359.1913.10654660)

To link to this article: <http://dx.doi.org/10.1080/00253359.1913.10654660>

PLEASE SCROLL DOWN FOR ARTICLE

Taylor & Francis makes every effort to ensure the accuracy of all the information (the "Content") contained in the publications on our platform. However, Taylor & Francis, our agents, and our licensors make no representations or warranties whatsoever as to the accuracy, completeness, or suitability for any purpose of the Content. Any opinions and views expressed in this publication are the opinions and views of the authors, and are not the views of or endorsed by Taylor & Francis. The accuracy of the Content should not be relied upon and should be independently verified with primary sources of information. Taylor and Francis shall not be liable for any losses, actions, claims, proceedings, demands, costs, expenses, damages, and other liabilities whatsoever or howsoever caused arising directly or indirectly in connection with, in relation to or arising out of the use of the Content.

This article may be used for research, teaching, and private study purposes. Any substantial or systematic reproduction, redistribution, reselling, loan,

sub-licensing, systematic supply, or distribution in any form to anyone is expressly forbidden. Terms & Conditions of access and use can be found at <http://www.tandfonline.com/page/terms-and-conditions>

THE IDENTIFICATION OF MODELS OF MEN-OF-WAR.

BY GREGORY ROBINSON AND R. C. ANDERSON.

VII.

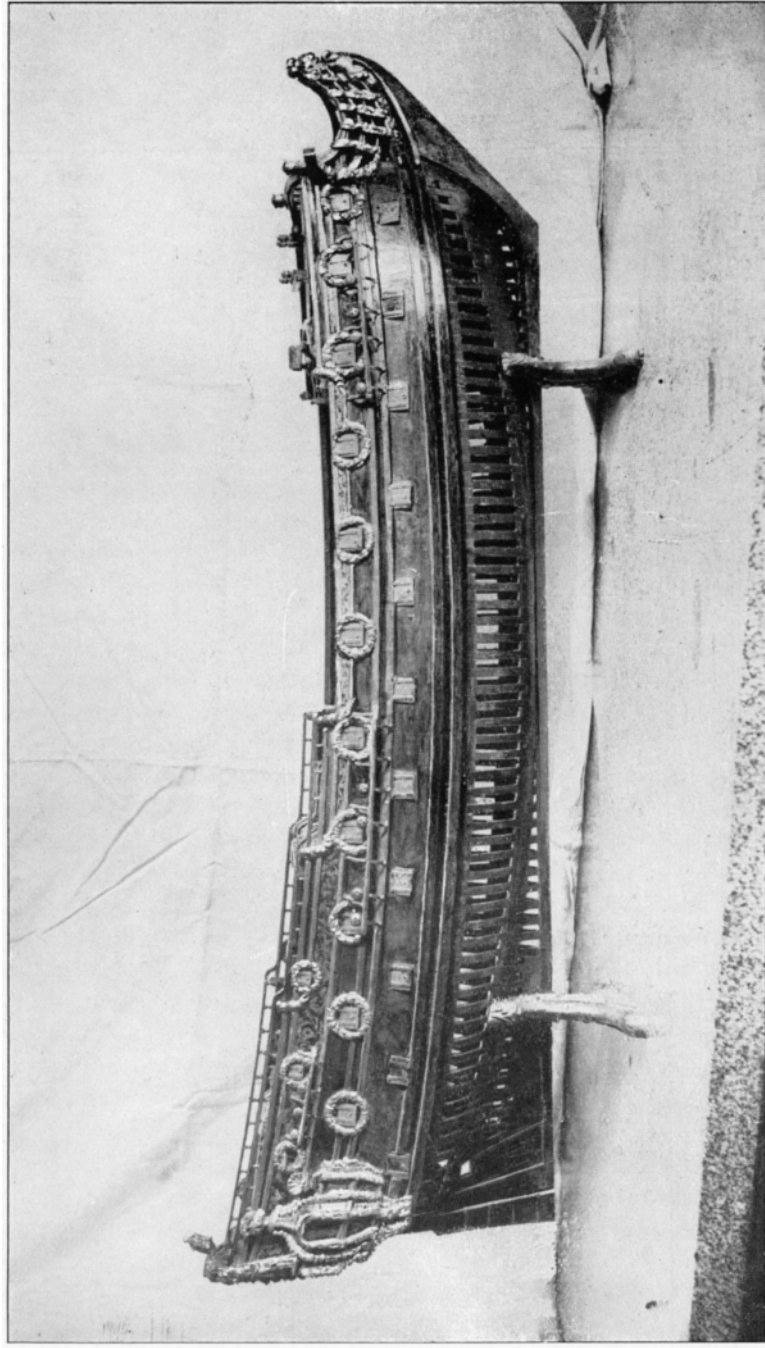
THE photographs accompanying this article give broadside and stern views of one of three very well-preserved models, heir-looms in the family of Mr. Frederick Morrice, of Brampton Hall, Suffolk. One of the two others, a small ten-gun ship of Queen Anne's reign, will be considered in a later article ; the third is a typical early Georgian 60-gun ship, exactly like one of the two so-called " 50 gun ships of 1701 " at Greenwich, being even attached to the same peculiar " plank on edge " type of stand.

The model has, as can be seen, a total of 50 broadside ports, 22 on the lower, 22 on the upper and 6 on the quarter deck, while on its stern, on the panels between the two rows of windows, is the date 1682, and on the panel above the rudder-head the letters C.R. ; the Royal Arms, too, are those of the Stuarts.

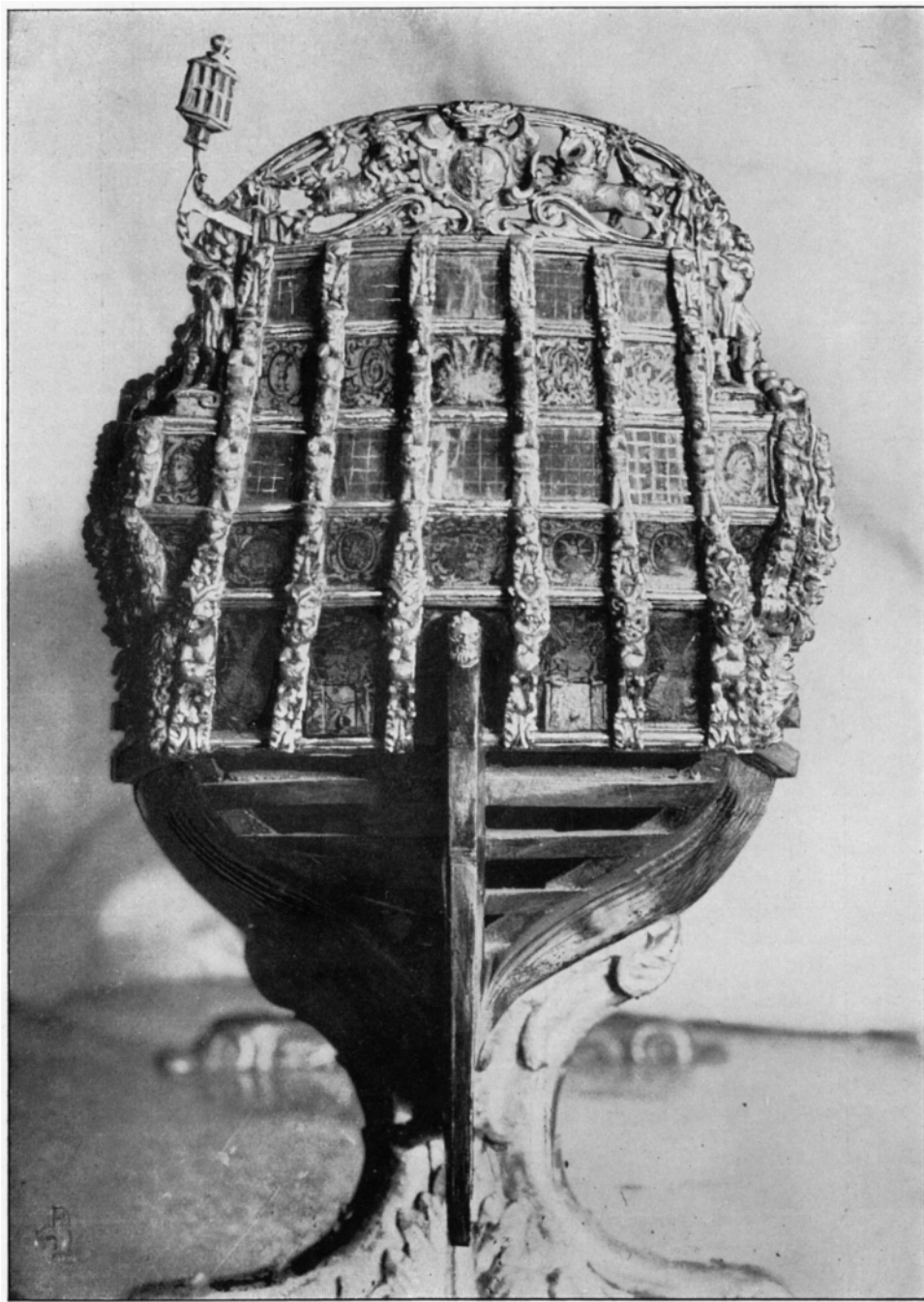
These points fix the model as that of some ship of not more than 50 guns built in or near 1682, at any rate in the last few years of the reign of Charles II. An examination of the lists shows that there are only three ships, which satisfy these conditions, the *Mordaunt* and *Tiger* of 1681, and the *Bonadventure* of 1683. The *Mordaunt* has already been identified in our second article as the original of one of the *Mercury* models, differing in many respects from that under discussion. There remain, therefore, the *Tiger* 46, built by Betts at Portsmouth, and the *Bonadventure* 48, built by Shish at Deptford.

The information with regard to these two ships in the various lists is somewhat confusing ; most of them continue to give the dimensions of the two original ships in spite of several rebuildings.

Two authorities, however, the Admiralty Register and a list, probably Pepysian in origin, printed in the first volume of the



H.M.S. "BONADVENTURE."



Naval Chronicle, give together a pretty clear idea of their various transformations. The following extracts are accordingly given from these two sources :—

<i>Admiralty Register.</i>							
	Gun Deck.	Keel.	Beam.	Depth.	Date.	Builder.	Yard.
<i>Tiger</i>	123'8"	99'0"	29'0"	12'0"	1681	Shish.	Deptford.
	—	—	32'10"	13'6"	1681	d°.	d°.
	124'8½"	103'6"	33'4½"	13'9"	1702	Wells.	Rotherhithe.
<i>Bonadventure</i> .	124'10"	102'0"	31'10"	12'6"	1663	Pett.	Chatham.
	—	—	32'5½"	12'4½"	—	—	—
	125'5"	102'5"	33'1½"	12'5"	1699	Harding.	Deptford.
<i>Naval Chronicle.</i>							
<i>Tiger</i>	—	99'0"	29'4"	12'0"	1647	Pett.	Deptford.
	—	104'0"	32'8"	13'8"	1681	Shish.	Deptford.
<i>Bonadventure</i> .	—	102'9"	29'6"	12'4"	1649	—	—
	—	102'9"	30'8"	12'4"	1663	Pett.	Chatham.
	—	102'6"	32'2"	12'4"	1683	Betts.	Portsmouth.

The first entry under the name *Tiger* in the *Admiralty Register* credits her with having been built and rebuilt in the same year by the same builder at the same yard; undoubtedly the first figures are really those of the 1647 ship, built by Peter Pett. In the *Naval Chronicle* list the 1649 *Bonadventure* has in the last two columns the signs d° d° which would lead one to suppose that she was built by Johnson at Deptford like the *Assistance*, her predecessor in the list; all other accounts, however, agree that though built at Deptford it was by Peter Pett.

We can now turn to a consideration of the dimensions of the model. They are as follows :—

Beam (outside *planking*), 8.4 in.; gun deck, 32.6 in.; keel ("touch"), 26.8 in.; keel ("harping"— $\frac{3}{5}$ B.), 27.0 in.; depth, 3.2 in.

Assuming for the moment that the figures in the second list are correct, and taking beam as our standard dimension, we find that a scale of $\frac{1}{46.7}$ is required for the *Tiger* and $\frac{1}{46}$ for the *Bonadventure*. With these scales we get the following results:

Scale.	Beam.	Gun deck.	Keel (T.)	Keel (H.)	Depth.
$\frac{1}{46.7}$	32'7 ft.	126'8 ft.	104'2 ft.	105'0 ft.	12'5 ft.
$\frac{1}{46}$	32'3 ft.	124'9 ft.	102'7 ft.	103'5 ft.	12'3 ft.

As far as keel-length goes there is little to choose between the two ships, but the gun deck and depth values, especially the latter, make it certain that the *Bonadventure* and not the *Tiger* is the ship represented by this model.