

# Data Stewardship and the German RDM Landscape

Fellowship of the Data, April 1 2025, Jena  
Benjamin Slowig (FDM-SH & CAU Kiel)

# Key Questions



- What is a Data Steward?
- What roles and tasks can a Data Steward take on?
- How is the German RDM landscape structured?

# What is a Data Steward?



- Individuals or roles that support researchers (and others) in:
  - creation, management, quality assurance, protection, sustainable use of research data and other aspects
- Distinction between generic (or central) data stewards and embedded (or decentralized) data stewards
- Their roles and tasks varies in different areas and contexts

# What roles and tasks can a Data Steward take on?



- They accompany others through the various phases of the data life cycle
- They often provide training and advice
- Their roles and tasks may overlap with other roles (e. g. data managers, data curators, data scientists)

# RDM: infrastructure and tasks



## Legal contact points

Needs assessment and requirements management

## Science management

Advice on handling research data

Establishment of RDM offers & structures at the institution

Support with the creation of a data management plan

Legal advice and orientation

## RDM contact points

Referral to internal and external services

Information events and awareness-raising

Training for different target groups

Availability of and advice on hardware and software solutions

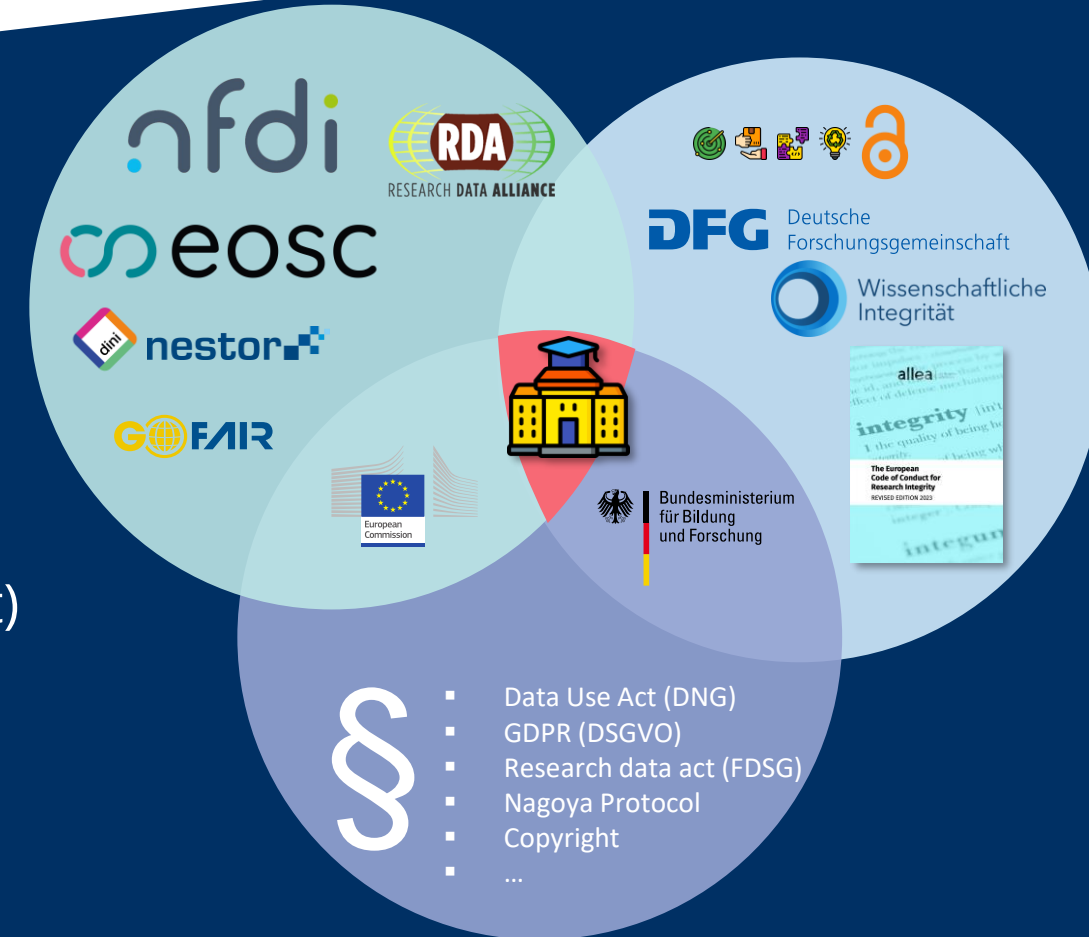
Networking and trend scouting

## Library

## IT / data center

# How is the German RDM landscape structured?

- Local institutions, stakeholder and regulations
- Regional stakeholders and regulations (e. g. federal state initiatives for RDM)
- National stakeholders and regulations (e. g. NFDI, DINI/nestor, DFG: Code of Conduct)
- International stakeholders and regulations (e. g. EOSC, EU: GDPR)



# Links & Bibliography



## Links:

- German information platform on RDM: forschungsdaten.info (english pages): <https://forschungsdaten.info/english-pages/>
- Mailing list of the German RDM community: <https://www.listserv.dfn.de/sympa/info/forschungsdaten>
- German-wide Sub-Working Group for RDM trainers (UAG Schulungen/Fortbildungen der DINI/nestor AG Forschungsdaten): [https://www.forschungsdaten.org/index.php/UAG\\_Schulungen/Fortbildungen](https://www.forschungsdaten.org/index.php/UAG_Schulungen/Fortbildungen)
- The Turing Way Community. The Turing Way handbook for reproducible, ethical and collaborative research: <https://book.the-turing-way.org/collaboration/research-infrastructure-roles/data-steward>

## Bibliography:

- Biernacka, K. et al. (2024). Train-the-Trainer Concept on Research Data Management. V5.1. <https://doi.org/10.5281/zenodo.13927614>.
- Cremer, F. et al. (2015). Embedded Data Manager. Integriertes Forschungsdatenmanagement: Praxis, Perspektiven und Potentiale. <http://doi.org/10.1515/bfp-2015-0006>.
- Curdt, C. et al. (2021). Data Stewardship im Forschungsdatenmanagement. Rollen, Aufgabenprofile, Einsatzgebiete. Überblick: 11. DINI/nestor Workshop, 16. und 17.11.2020. <http://doi.org/10.17192/bfdm.2021.3.8347>.
- Seidlmayer, E. et al. (2023). Forschung unterstützen - Empfehlungen für Data Stewardship an akademischen Forschungsinstitutionen. Ergebnisse des Projektes DataStew. <https://doi.org/10.4126/FRL01-006441397>.
- Verheul, I. et al. (2019). Data Stewardship on the map. A study of tasks and roles in Dutch research institutes. <https://doi.org/10.5281/zenodo.2669150>.