

Child Wellbeing Research and Policy Community



Irena Vipavc Brvar, CESSDA/UL-ADP
Giulio Ecchia, University of Bologna

Child Wellbeing: Longitudinal Evidence for Research and Policy in Europe [conference]
Zagreb, 5 March 2025



This project has received
funding from the European
Union's Horizon 2020
research and innovation
programme under grant
agreement No 101008589



Contribution

Text based on past reports and presentations by:

- Orla Doyle, University College Dublin – Transnational Access Visits
- Ksenija Perković, ZRS Koper – Communication and Marketing
- Irena Vipavc Brvar, CESSDA/UL-ADP – Training and Outreach
- Guilio Ecchia, University of Bologna – GUIDE Network Development

Supporting researchers with secondary use of data



Designed by [Freepik](#)

Visits

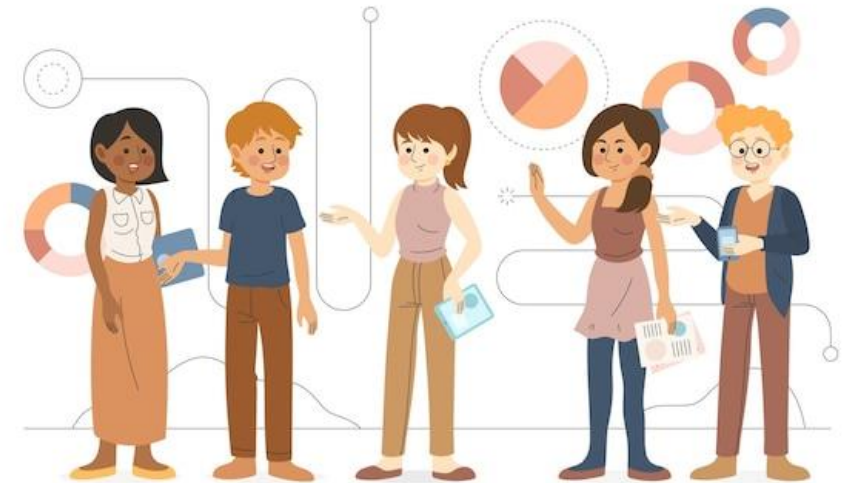
Training

Outreach

Communication

Objectives of Transnational Access Visits

- Facilitate **access to existing international birth cohort** and cross-sectional **survey data**.
- Support **transnational** (physical) **access visits to research infrastructures** (RI) relevant to **child wellbeing**.
 - Complex data require experienced researchers to support users -> access to DATA & PERSONNEL
- The new skills and competencies gained from the visits will **enhance current research** and **create new opportunities for future research**, for both the visitor and host.



Designed by [Freepik](#)

Setting the grounds for TAV

- Designing policy document detailing the **terms and conditions of the visits**.
- Designing **application procedures** and **application form**.
- Developing **procedures** & systems for **managing & reviewing applications**.
- Forming **panel of reviewers** (including internal & external reviewers)
- **Managing applications** received & reviewer allocation, including applicants scores
- Distributing **outcomes** of the review process to host institutions & applicants

....

Communication:

- Webpage about the calls and presenting partners (videos)
- Promotion of each call via several project' and partners' social media channels, newsletter etc.

TA Visits: Practical Issues

- TA visits can be between **1 and 3 weeks** in length.
- Each hosting institution has been **assigned a set number of weeks**, based on their size and activity.
- Each hosting institution **holds their own budget** and is responsible for coordinating and supervising the visits.
- Visits covered by bursaries of **€1,250 per week** (travel, accommodation and subsistence).
- Shorter visits can be supplemented by follow-up virtual visits to minimise costs and facilitate access for those with limited capacity to travel.
- Encourage **simultaneous visits** of multiple researchers at each host institution to facilitate efficient orientation and training and to promote further networking.

Hosting institutions and data

35 PM for support

Hosting institution	Research Infrastructure (RI)	Visits (unit of access-2 weeks)
MMU / Centre for Longitudinal Studies	Children's Worlds; IPPR Tax-benefit Model; National Child Development Survey; British Cohort Study; Millennium Cohort Study; Next Steps	30
KNAW NIDI	Generation and Gender Programme	30
UESSEX / ISER	British Household Panel Survey; Understanding Society; Cross-National Equivalent Files; German Socio-Economic Panel Study; The UK Data Service	24
UCD	Children's School Lives; Growing Up in Ireland	20
CentERdata	Longitudinal Internet studies for the Social Sciences	10
ECSW	Survey of Health, Aging and Retirement in Europe	20
INED	Etude Longitudinale Francaise depuis l'Enfance	10
IPSOS	EU Kids On-line	10



Role of the Host Institution

- **Make a staff member** available to orientate the visitor to the institution and datasets
- **Provide a workspace and computer**
- Provide details on **physical access requirements** (especially where there are secure data environments)
- **Invite visitors** to attend any events or relevant meetings organised during their stay which are relevant
- **Liaise with the visitor on their proposed project** to ensure the innovativeness of the topic and to avoid overlap with other researchers and explore potential collaboration opportunities.

TAV Update

Since Jan 2022 (Calls 1-6):

- **196** applications have been received
- **189** applications were eligible
- **139** awards have been made (*avg. per call 23 / avg. acceptance rate 72%*)
- **90 visits** have taken place (& 39 due to take place)
- **51 blog posts** have been published.

TAV Visitors on Tour!



Country of Home Institution of successful applications	N	%
UK	23	17%
Ireland	21	15%
Spain	20	14%
Germany	13	9%
Croatia	11	8%
Italy	8	6%
Slovenia	6	4%
Serbia	4	3%
Finland	3	2%
Lithuania	3	2%
Canada	2	1%
Luxembourg	2	1%
Moldova	2	1%
Norway	2	1%
Poland	2	1%
Romania	2	1%
The Netherlands	2	1%
Turkey	2	1%
Armenia	1	1%
Belgium	1	1%
Bulgaria	1	1%
Czech Republic	1	1%
Estonia	1	1%
France	1	1%
Israel	1	1%
Latvia	1	1%
North Macedonia	1	1%
Portugal	1	1%
Switzerland	1	1%
Total	139	100%

TAV Applications by Country

Applications received from 32 countries.

We did not received applications from:

Cyprus, Faroe Islands, Georgia, Greece, Iceland, Malta, Montenegro, Slovakia, Sweden, Tunisia.

Weeks used: 286 (308 available).

Main Benefits

What were the main benefits you gained from your transnational access visit?	%
--	---

Access to new data sources	89%
----------------------------	-----

Practical research experience	72%
-------------------------------	-----

Built professional networks	67%
-----------------------------	-----

Exposed to new ideas or perspectives	56%
--------------------------------------	-----

Enhanced technical skills or research methodologies	44%
---	-----

Gained confidence in academic presentations	14%
---	-----

Concrete outputs (conference presentation, potential publication)	2%
---	----

N	57
----------	-----------

From Evaluation survey

Research Outcomes

Activities undertaken during visits:

- acquisition of data
- data analysis
- data harmonization
- meetings with senior researchers
- seminar attendance and presentations
- preparing funding proposal
- preparing conference presentations
- networking
- planning future collaborations

There is a demand for using longitudinal data on child and young well-being among researchers.

- 6 academic papers e.g. *Journal of Public Health, Early Human Development*
- 5 poster presentations e.g. European Academy of Child Disability Conference
- 15 conference presentations e.g. 19th European Congress of Psychology, Population Association of America annual conference
- Work in progress
 - Book development
 - Papers under preparation
 - Papers under review
 - Collaborative efforts

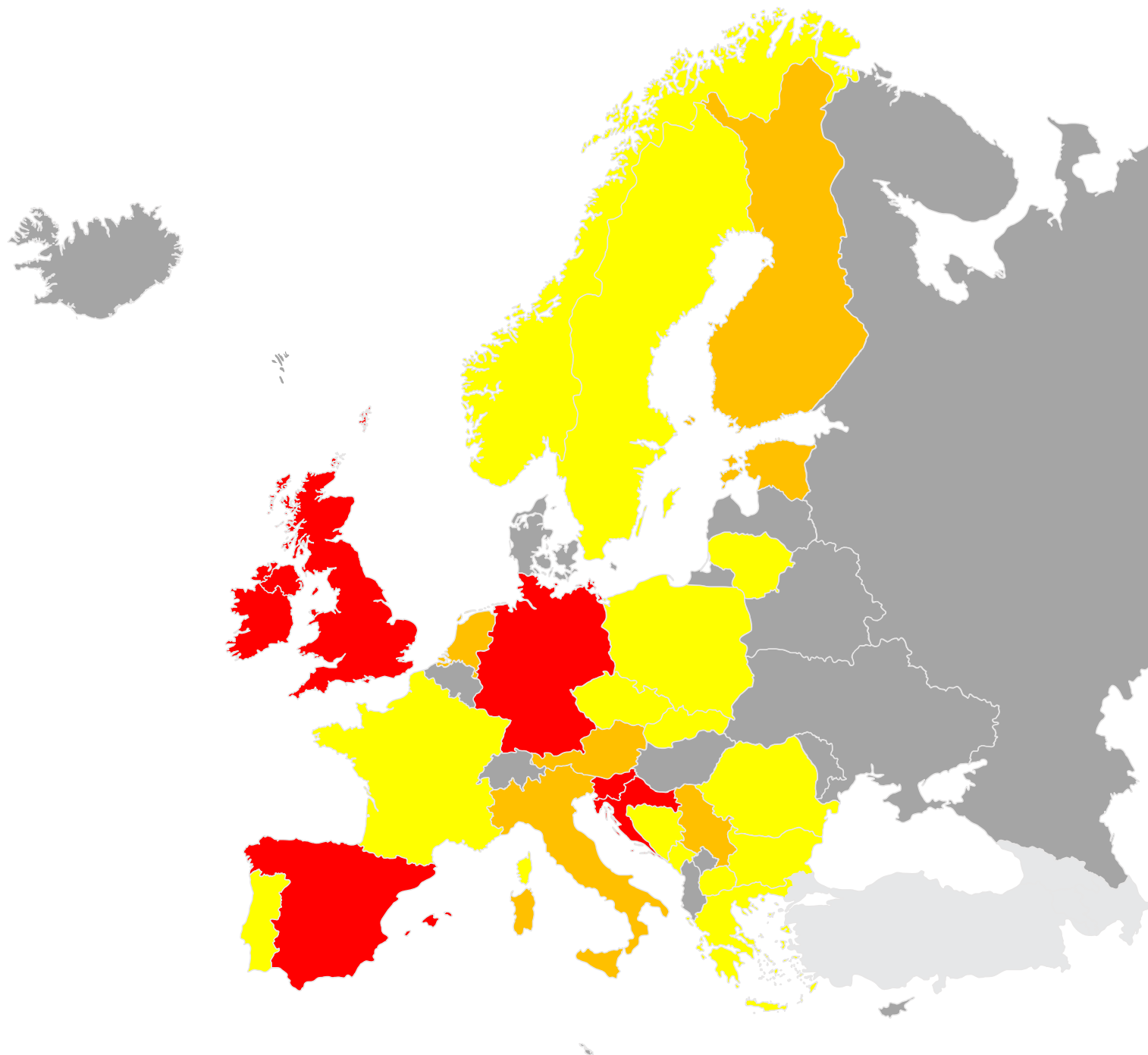
Training & Outreach activities

Provide secondary users **knowledge and skills necessary to analyse data** and better understand the methodology of comparative survey research.

Introduce datasets and services available through awareness raising webinars that will help researchers decide upon their future visits.

Activities:

- Pitch events & videos
- Training on Data Management
- Interactive training statistical courses (3+1)
- Summer schools (3)
- Training for non-scientific, national stakeholders



Participation of training and outreach events
per country (2022-2024)

	15 - 43
	7-10
	2 - 5
	None

[Source of the map template](#)

PITCH Online Events

26th Jan | [1st Transnational Access Visits Pitch](#) – presenting European Centre, IPSOS and University College Dublin

2nd Feb | [2nd Transnational Access Visits Pitch](#) – presenting Centerdata, INED and University of Essex

31 Aug | [3rd Transnational Access Visits Pitch](#) – presenting Manchester Metropolitan University, Netherlands Interdisciplinary Demographic Institute, University of Essex and Centerdata

Presentations and videos materials available at <https://www.coordinate-network.eu/event-materials>

Duration: 1 h

	present/registered	Video Videos
TAV1	42/64	121
TAV2	41/54	80
TAV3	36/74	106

Status: Feb 9th, 2025

Short promotional videos

All videos are listed at <https://www.coordinate-network.eu/transnational-visits>

	Video views
Centerdata , Netherlands: Longitudinal Internet Studies for the Social Sciences (LISS)	<i>data not available</i>
European Centre , Austria: Survey of Health, Ageing and Retirements in Europe (SHARE)	194
Institut National d'Études Démographiques , France: Etude Longitudinale Française depuis l'Enfance (ELFE)	162
IPSOS , Germany: EU Kids Online (EUKO)	229
Manchester Metropolitan University , UK: Children's Worlds (ISCWEB), National Child Development Study (NCDS), British Cohort Study (BCS70), Millennium Cohort Study (MCS), Next Steps (LSYPE), IPPR Tax-benefit Module	144
Netherlands Interdisciplinary Demographic Institute , Netherlands: Generations and Gender programme (GGP)	149
University College Dublin , Ireland: Growing up in Ireland (GUI) & Children's School Lives (CSL)	207
University of Essex , UK: British Household Panel Survey (BHPS), Understanding Society (UKHLS) and UK Data Service (UKDS)	140



Training on Data Management (Ljubljana)

- **Data Management Planning in general** (Sonja Bezjak and Irena Vipavc Brvar, ADP)
- **Legal grounds for processing personal data** (Marianne Høgetveit Myhren, Sikt)
- **Processing personal data: Hands-on** (Marianne Høgetveit Myhren, Sikt)
- **Challenges in doing research with migrant children** (Mateja Sedmak, Science and Research Centre Koper)
- **GUIDE pilot survey: Example of the data management plan and content of child and parental consent** (Toni Babarović, Institute of Social Sciences Ivo Pilar, Zagreb)
- **Data discovery, Longitudinal and secondary data: lecture and hands-on** (ADP)
- **Update your DMP** (ADP)

Present / registered	Gender distribution	Downloads
30/43	26 F, 4 M	5 files: 139 views, 127 downloads



Status: Feb 9th, 2025

Duration: 1,5 day
5 bursaries



Interactive training statistical courses (Zagreb)

	Duration	Present/ registered	Gender distribution	Bursaries	Downloads
Basics of the R programming language – data wrangling and data visualization, 2022	1,5 days	22/33	21 F, 1 M	5	<i>data not available (COORDINATE Page + GitHub)</i>
Modelling change: A gentle introduction to cross-lagged and latent growth curve approach, 2023	2 days	25/56	22 F, 3 M	17	252
Lecture on Methodological and Analytical Aspects of Longitudinal Research, Online, 2023	1h 15	61/96	43 F, 18 M	/	39+29 video views, 52 presentation downloads
How to Access and Compare Data from Different Sources, 2024	1 day + conf	20/83	10 F, 10 M	17	<i>data not available (just published)</i>

Status: Feb 9th, 2025



Summer schools

	Present/ registered	Gender distribution	Bursaries	Views/ Downloads
Essex, 2022	17/21	11F, 6M	16	16/54
Bamberg, 2023	31/42	/	20	22/10
Barcelona, 2023	24/54	18F, 6M	14	35/35

Status: Feb 9th, 2025

Duration: 5 days

zenodo

Summer Schools



Source: <https://doi.org/10.5281/zenodo.10721677>

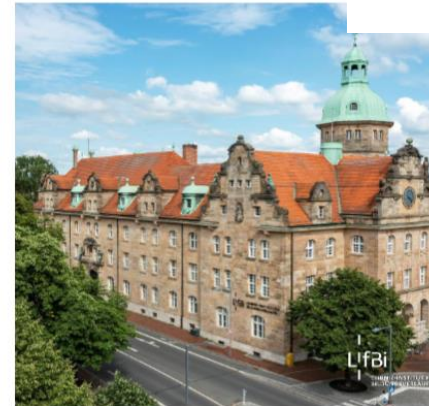
WELCOME

2nd COORDINATE Summer School

Analysis of Data from the
German National Educational
Panel Study

July 10-14, 2023 | LfBi, Bamberg | Germany

DOI: 10.5281/ZENODO.10072565



Source: <https://doi.org/10.5281/zenodo.10072565>

Introduction to life course research and sequence analysis

Exploring youth trajectories with the Catalan Youth Survey Dataset

3rd COORDINATE Summer School
Barcelona, June 2024

Alejandro González-Heras, Joan Miquel Verd, Mireia Bolibar

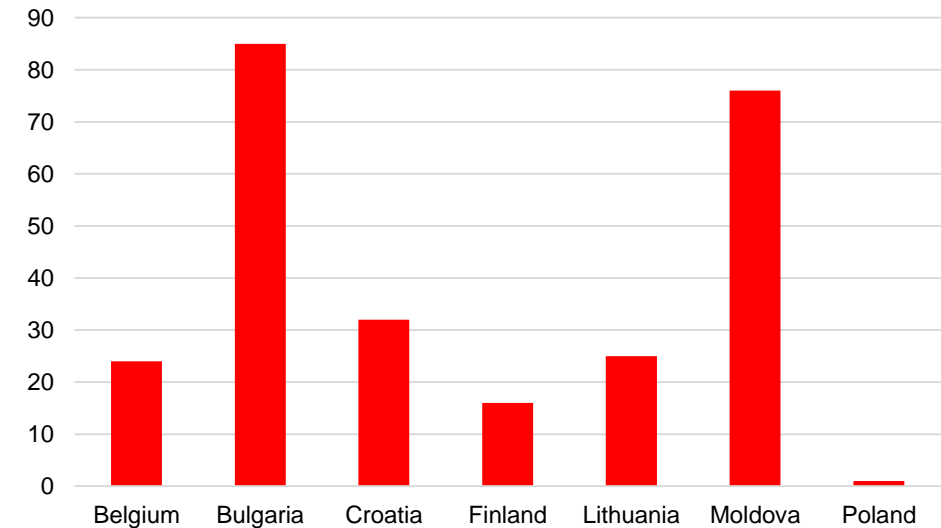
Source:

<https://doi.org/10.5281/zenodo.14825864>



Training for non-scientific, national stakeholders

	# of attendees	Gender distribution	Views/ Downloads
Main workshop, Netherlands	7	5 F, 2 M	37/51
Belgium (3 events)	24	16 F, 8 M	19/14
Bulgaria (2 events)	85	70 F, 15 M	32/35
Croatia (3 events)	32	30 F, 2 M	25/30
Finland (2 events)	16	6 F, 10 M	16/8+21/15
Moldova (3 events)	76	21 F, 1 M (54 no data)	Not published
Lithuania (4 events)	76	74 F, 2 M	35/36



Status: Feb 9th, 2025

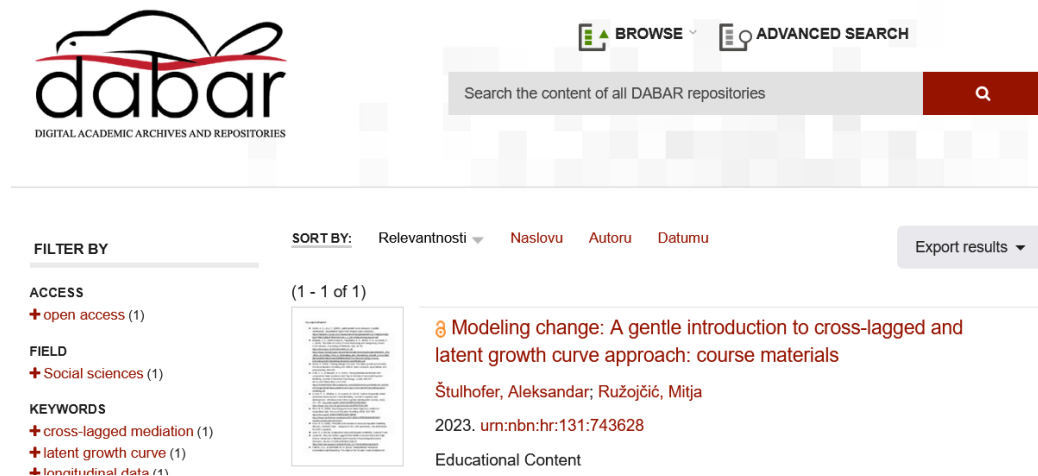
Centrally, very labour intensive.
Reserve enough time for networking.

Module 3

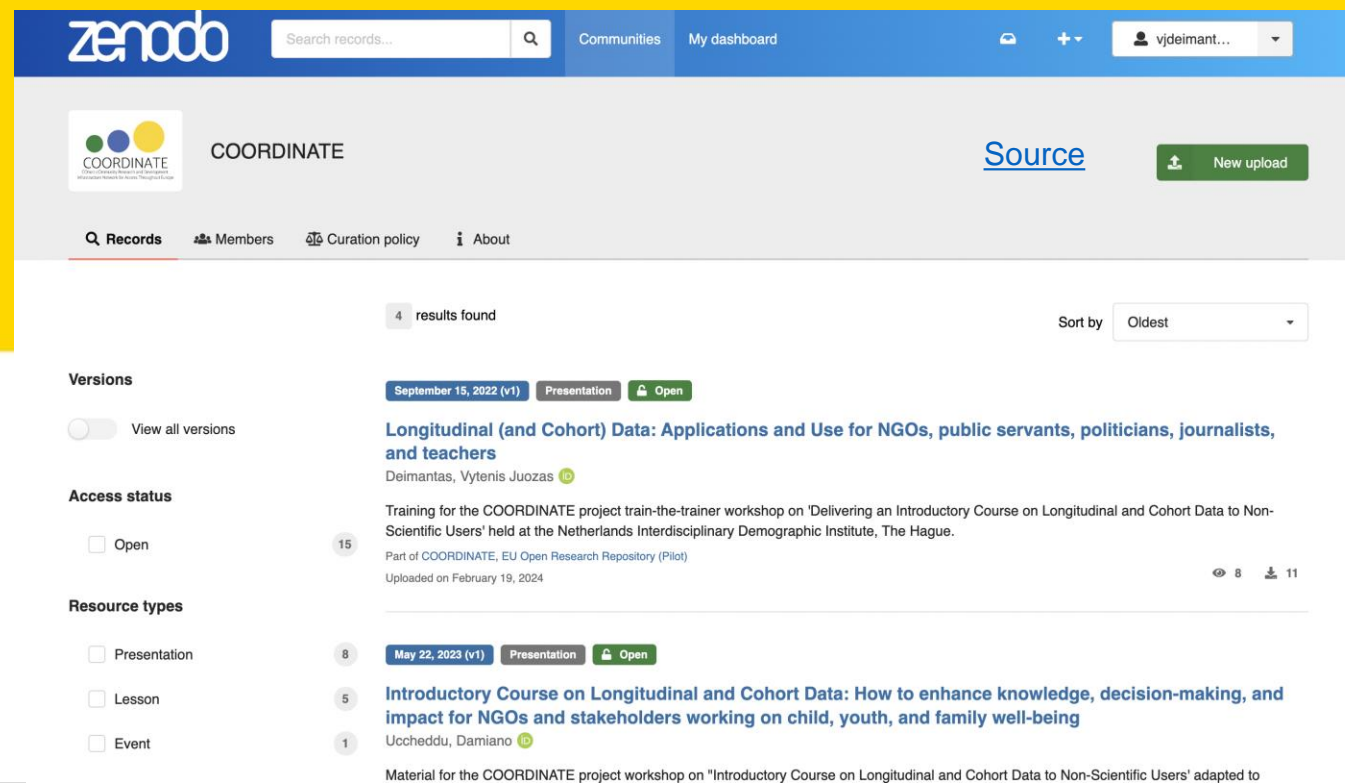
What questions longitudinal data can help answer better than other types of data?

Publication of materials

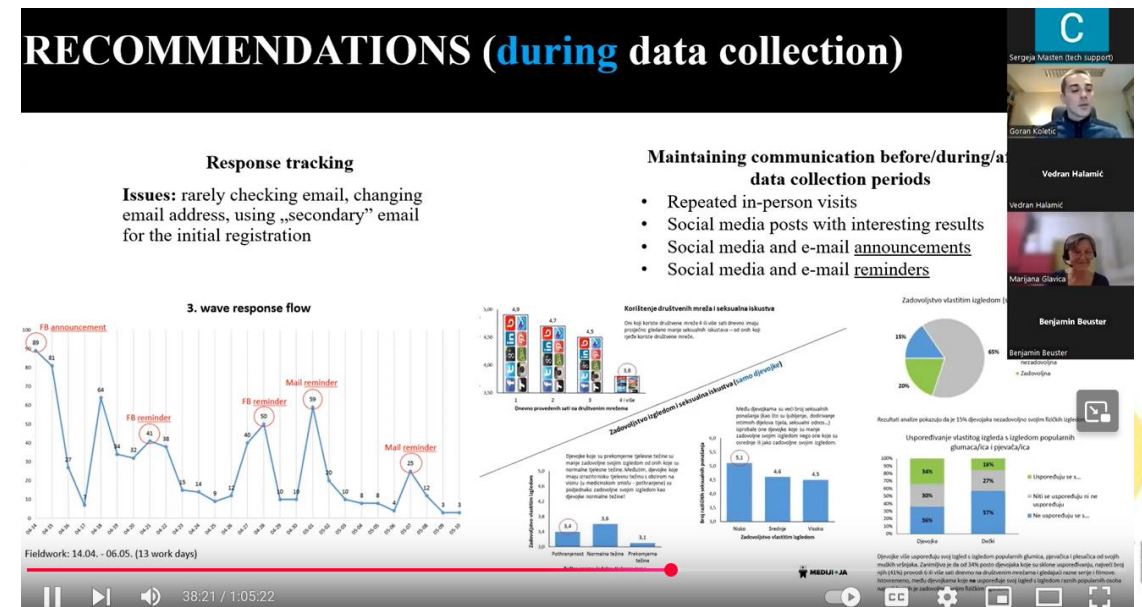
Materials from training events were published in repositories: [COORDINATE Zenodo community](#) or Croatian [Digital Academic Archives and Repositories](#) (DABAR), while videos are on [COORDINATE's YouTube channel](#).



[Source](#)



[Source](#)



Project Impact Summary

 Events Delivered Online: 4

 Short Videos Created: 7

 Summer Schools Held: 3

 Workshops for Researchers: 4

 Train-the-Trainer + National Workshops: 1 TtT + 17

 Budget: 160.000 € +  ~ 23 PM + OH

 Participants Engaged: 623

 Materials Viewed: 625

 Materials Downloaded: 775

Recommendations for Future Projects

1. Expand Training **Accessibility**
 - a. Develop **also online** and **hybrid training formats** to reach a broader audience, especially researchers from underrepresented regions.
 - b. Offer **self-paced e-learning modules** covering essential statistical and methodological skills.
2. Strengthen Interdisciplinary **Collaboration**
 - a. Encourage **partnerships between universities, policy makers** and non-governmental organizations to ensure that training is aligned with practical needs.
 - b. Organize **thematic workshops** that focus on cross-disciplinary applications of longitudinal research.
3. Enhance **Data Literacy** and Application
 - a. Provide hands-on training **on data integration, visualization** and advanced analytics.
 - b. Develop data access guides and **best practices for secondary** analysis to ensure ethical and efficient use of datasets.

Recommendations for Future Projects

4. Increase **Inclusivity and Diversity**

- a. When selecting participants, ensure a **regional balance** in order to guarantee a fair representation of different backgrounds.
- b. Provide language support and **localized materials** to improve accessibility for non-English speaking researchers.
- c. Reach out to **non-academic data users** to maximize the impact of the data assets.

5. Sustainability and **Capacity Building**

- a. Establish a **mentoring program** to support early-career researchers in applying longitudinal methods.
- b. Create open-access training resources to enable **continuous learning** beyond the project duration.

6. Monitoring and **Evaluation** for Continuous Engagement

Conduct post-training impact assessments to measure the effectiveness of training initiatives.

Collect long-term feedback from former participants to improve future training programs.

Involve the training participants in other (project) activities and monitor the impact of the training on engagement.



WEBSITE

- Serves as the primary access point/central hub for all public project-related resources
- Ensures visibility and long-term accessibility of project outputs



Additional events and promotional activities

- **Introduction video**
- 2 Events for engaging **policymakers** - online
- **Conference** Growing up in digital Europe: evidence for child wellbeing policy making - Florence
- **Conference** Child and Youth Wellbeing: Longitudinal evidence for Research and Policy – University of Essex
- 2 **webinars** on child centred approach
- Final COORDINATE and GUIDE **conference** - Zagreb

Blogs

- 81 blogs written and published on the website
- Authors:
 - TAV participants
 - Summer School participants
 - Project partners

BLOG



Apr 12

World Happiness: how are children and young people?

The World Happiness Report 2024 has found that life satisfaction gradually drops from childhood through adolescence into adulthood. In...



Apr 8

Two weeks research stay at UCD Dublin

During my research visit to University College Dublin (UCD) funded by the TAV Coordinate project, I worked on my project, titled "The...



Mar 27

Research visit to NIDI – exploring new research opportunities and perspectives

My name is Antonela Čižmešija and I am a teaching assistant at the Faculty of Organization and Informatics at the University of Zagreb. I...



Mar 26

Three-week research visit to the Netherlands Interdisciplinary Institute of...

My name is Grigoraș Ecaterina, PhD in sociology, and I work as a senior scientific researcher at the Center for Demographic Research of...



Feb 13

Reflection on Two Memorable Weeks in Vienna and Investigating Retrospective...

I am a researcher, scholar, cultural practitioner, creative thinker, interdisciplinary artist, and poet. Furthermore, I hold the position...



Feb 12

9.25 Workshop on Utilizing SHARE Data in Academic Research and Policy

Workshop on Utilizing SHARE Data in Academic Research and Policy-Making in Helsinki, Finland On 25th September 2023, a follow-up to the...

Newsletters

- **16 Newsletters** were published on the COORDINATE website and further disseminated through a monthly recap email campaign
- A range of topics covered, including the launch of the TAV, findings from the GUIDE Pilot Studies across different countries, ethical considerations in child wellbeing research, organised international events, and policy engagement efforts



ged in the way that children's role
ter extent. Within the child-centred
ctors, cocreators of their own and social
integral to research, activities and
ntered research is a research approach
pectives, experiences, and voices, and
the research process. This approach
ncerns, and aspirations, and to inform
ng and rights. It also reveals perspectives

pper organized free online webinar on
of child-centered approach in the
policy makers and practitioners and
community of researchers working
et it is feasible to engage children
It highlights the importance of
participants and research advisors.



NEWSLETTER

ISSUE 9 / APRIL 2024

INSIGHTS FROM THE GUIDE PILOT SURVEY: LESSONS LEARNED IN FRANCE

As part of the preparations for the full-scale [GUIDE](#) survey, a pilot survey was conducted in France and four other countries (Croatia, Finland, Ireland and Slovenia). The study was funded as part of the Horizon 2020 [COORDINATE](#) project. [The French National Institute of Demography \(INED\)](#) led and supervised the survey, while the fieldwork was carried out by the KANTAR agency. The study comprised approximately 750 interviews with parents and children and took place between 30 March and 23 May 2023.



SELECTION OF THE SAMPLE

The target sample included 8 years-old children and their parents or caregivers as well as parents/caregivers of newborns. Two main sampling methods were used: 1) recruitment in public places such as schools or kindergartens and 2) snowballing. One of the main sampling criteria was to consider the regional diversity of France and to include both urban and rural populations in the survey.

FIELDWORK AND METHODOLOGY

The interviewer training was the first step in the implementation of the French GUIDE pilot survey. The training took place in March 2023 and 51 interviewers participated. The interviews were conducted face-to-face, i.e. in CAPI (Computer Assisted Personal Interview) mode. The survey participants received a flyer prepared by the INED team containing all the basic information about the objectives and protocol of the survey.



SCIENTIFIC COMMUNITY

- LinkedIn and Zenodo
- Child Wellbeing Variable Database
- Safeguarding Manual

Paula Sergeant · Dec 15, 2023 · 1 min read

COORDINATE Project launch Safeguarding Manual



Research with children and young people faces additional ethical challenges compared to research with adults. Beyond securing parental consent and making sure that children provide informed consent, researchers must also receive adequate training before conducting fieldwork. There is always a possibility that research conducted with children uncovers some safeguarding issues.

COORDINATE Project has produced this useful Safeguarding Manual on how to notice and address issues related to child protection in research contexts.

Read the manual here:



Safeguarding manual.pdf
Download PDF · 4.15MB



STAY CONNECTED



To subscribe to the COORDINATE scientific community network and get updates, please join our **LinkedIn group**:

Subscribe to our LinkedIn group

Database

How to use

Harmonisation

Child Wellbeing Variable Database



Cohort Study Scientific Network

Private Listed

139 members

SCIENTIFIC COMMUNITY

Scientific Publications links on the website



Youth Advisory Boards (YABs): The Case of the Growing up in Digital Europe (GUIDE) Study

Authors: Klea Ramaj, Gary Pollock

[LINK TO PUBLICATION](#)



Harmonising Variables on Child Wellbeing

Authors: Insa Bechert, Scott Milligan

[LINK TO PDF](#)



Polycrisis and Child Wellbeing: Future Avenues Across Europe

Authors: Klea Ramaj, Gary Pollock

[LINK TO PDF](#)

[LINK TO THE WEBSITE](#)



Population heterogeneity in developmental trajectories of internalising and externalising mental health symptoms in childhood: differential effects of parenting styles

Authors: Ioannis Katsantonis, Jennifer E. Symonds

[LINK TO PUBLICATION](#)



Current Findings and Policy Concepts Concerning School-Related Health and Well-Being in Finland – School Burnout and Engagement

Author: Katariina Salmela-Aro

[LINK TO PUBLICATION](#)



Adverse childhood experiences and multimorbidity in adulthood: Findings from the Survey of Health, Ageing and Retirement in Europe (SHARE)

Authors: Sonya Deschênes, Elaine Lowry, Cassandra Simmons, Esme Elsdén, Christina Koretsidou, Amy McInerney & Ricardo Rodrigues

[LINK TO PUBLICATION](#)

POLICY MAKERS

Policy briefs

Event for policymakers in November: Growing Up in Digital Europe (25th November 2021)

Event for policymakers in January: Growing Up in Digital Europe (17th January 2022)



GUIDE / EuroCohort policy briefs

EuroCohort Policy impact case studies

EuroCohort Policy impact case studies



[Policy impact case study 1: British Cohort Study 1970](#)

[Policy impact case study 2: European Social Survey](#)

[Policy impact case study 3: Germany's National Education Panel Study](#)

[Policy impact case study 4: Young Lives](#)

[Policy impact case study 5: Millennium Cohort Study](#)

MYWEB Policy brief 1



[Croatia](#)

[Estonia](#)

[Georgia](#)

[Germany](#)

[Greece](#)

[Hungary](#)

[Latvia](#)

[Portugal](#)

[Slovakia](#)

[Spain \(castellano\)](#)

[Spain \(catalan\)](#)

[United Kingdom](#)

MYWEB Policy brief 2



[Croatia](#)

[Estonia](#)

[Georgia](#)

[Germany](#)

[Greece](#)

[Hungary](#)

[Latvia](#)

[Portugal](#)

[Slovakia](#)

[Spain \(castellano\)](#)

[Spain \(catalan\)](#)

[United Kingdom](#)

COORDINATE to GUIDE

COORDINATE's work serves as a strong foundation for future research and for the GUIDE research infrastructure. Our recommendation for GUIDE include:

Strengthening GUIDE's Visibility & Stakeholder Engagement

- Engaged policymakers, researchers, and institutions, raising awareness of GUIDE's mission.
- Built strong relationships with the European research community and policymakers.
- Published research findings, policy briefs, and newsletters to highlight the importance of longitudinal data, ensuring an informed and engaged audience.

Ensuring Long-term Access to COORDINATE Outputs

- COORDINATE's website and Zenodo community functions as a central repository, enabling GUIDE to reuse and expand on existing materials.
- A permanent link on GUIDE's website will ensure continued access to COORDINATE's outputs.

This approach ensures that GUIDE builds upon COORDINATE's achievements while maintaining accessibility and engagement with stakeholders.

Networking

1. Foster an **integrated European scientific community** to help deepen the knowledge and capacity for the use of international birth cohort panel survey data, which focus on child and youth wellbeing;
2. Foster the **scientific and technical expertise and operational capacity** required for implementing the GUIDE survey across Europe;
3. Foster **long-term sustainability of GUIDE** research infrastructure by establishing appropriate links with government and research organizations, 3rd sector organizations, and stakeholders involved in national and European policy development networks and funding bodies.

Mapping

The extensive mapping of the European scientific community involved in children and young adults well-being allowed

- to gather contacts and identify the first national nodes in the GUIDE scientific network;
- to evaluate national needs in terms of training and capacity building in targeted events, workshops and webinars.

The mapping template divided stakeholders and potential members of the GUIDE community network in 4 groups:

1. **Academics/scientists** (with a focus on PhD Programs);
2. **Institutions/organizations**;
3. **Policy-makers**;
4. **Funding/investment bodies**

Mapping

1. The mapping exercise has produced a list of **3066 contacts in 44 countries**. There are now 2005 contacts for countries inside the project consortium (COORDINATE and GUIDE) corresponding to 65% of the total, and 1026 contacts outside the consortium corresponding to 34% of the total. The remaining 1% contacts concerns International Organizations.
2. Scientists and researchers represent 42% of the total, 13% are the contacts of PhD programs. The mapping produced contacts of policy-makers (24%), 661 contacts of institutions/organizations (22%) and 380 (12%) of funding bodies.

Scientific Community Networking

Research Infrastructures and Cluster of Longitudinal Surveys (ESS, SHARE, GGP, GUIDE)

ICCRI 2022 (Brno, October 2022)

ICCRI 2024 (Brisbane, December 2024)

Towards a life-cycle approach (European and global)

Scientific Community Networking

Research community on longitudinal surveys and well-being

ESRA (various years)

COORDINATE International conference (UNICEF Innocenti, Florence, October 2023)

OECD World forum on Well-Being (Rome, November 2024)

COORDINATE Scientific Community Network Online Site

The network has been set up as a group on LinkedIn, which will be regularly updated with content generated from the COORDINATE project, including materials, outputs, briefing papers, blog posts and announcements about events, webinars, and summer schools.

This will also be a space to share any other relevant information and ideas, discussing the latest research and trends in child and youth wellbeing, survey research, and data access.

The network is intended to exist beyond the COORDINATE project and the management of the group will be taken over in the future by the GUIDEPREP project and eventually by the GUIDE research infrastructure.

GUIDE Partner Forum Member Package

GUIDE Partner Forum Member Package, a dedicated online section in the project area presenting a suite of tools and training resources aimed to support the Guide partner Members to engage and embed in national networks.

Policy briefings

Policy briefings to illustrate the potential impact of the RI for researchers and other stakeholders

Survey-based briefings

- Describe realised policy impacts from specific national surveys
- Describe policy impacts in the areas of: [children's rights](#); shaping [childcare and educational services](#); [parental leave](#) (specifically [paternity leave](#)); [children's health](#) and [inequalities in health and well-being](#).

Country	Survey	Policy Impacts
Australia	Growing Up in Australia: Longitudinal Study of Australian Children (LSAC)	3
Canada	Quebec Longitudinal Study of Child Development	2
France	Growing up in France: Etude Longitudinale Francaise depuis l'Enfance (ELFE)	3

Policy briefings

Thematic briefings

- Describe where longitudinal data and RIs have influenced (or could influence) policy in a particular area.
 - Evidence across multiple countries & surveys (3 countries/surveys each brief)
- COVID
 - Longitudinal surveys had “COVID waves”
 - Existing RIs **indispensable** because **necessary** to gather data quickly and when it was not feasible to contact a new sample
- Digital
 - Concerns about “digital” have evolved with technology: from exposure to screen time to exposure to content and networks via social media
 - Longitudinal survey RIs **invaluable** to keep track of rapidly evolving trends
- In both cases, utility of data would be enhanced by **pan-European comparability**

Business Plan

- Business plan for the GUIDE research infrastructure
- Business canvas model as a reference model
- Benefits and Costs
- Stakeholders' engagement
- European perspective and national context

Business Plan/Costing exercise

- Comprehensive cost estimate for the Countries participating in GUIDE.
- Survey design and costs
- Heterogeneity
- Flexibility
- Multimode/mixed modes
- Sustainability.

Thank you



Questions?



This project has received
funding from the European
Union's Horizon 2020
research and innovation
programme under grant
agreement No 101008589



Classification of countries participating in GUIDE

Group	Country
High-cost/Large	Belgium, France, United Kingdom, Germany
High-cost/Small	Austria, Finland, Ireland, Luxembourg, Norway
Medium-cost/Large	Greece, Italy, Portugal, Spain
Medium-cost/Small	Slovenia, Malta, Estonia
Low-cost/Large	Hungary
Low-cost/Small	Croatia, Latvia, Slovakia

Thank you



Questions?



This project has received
funding from the European
Union's Horizon 2020
research and innovation
programme under grant
agreement No 101008589