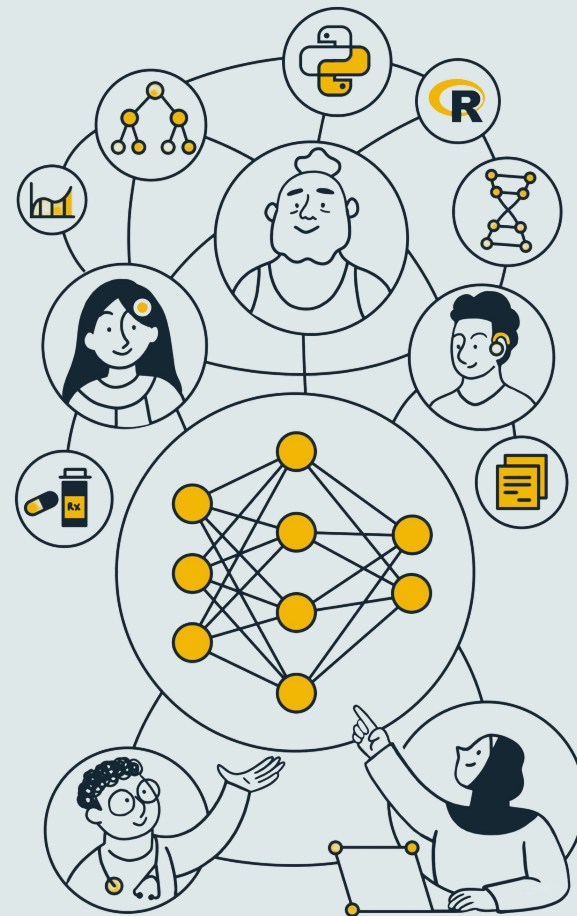


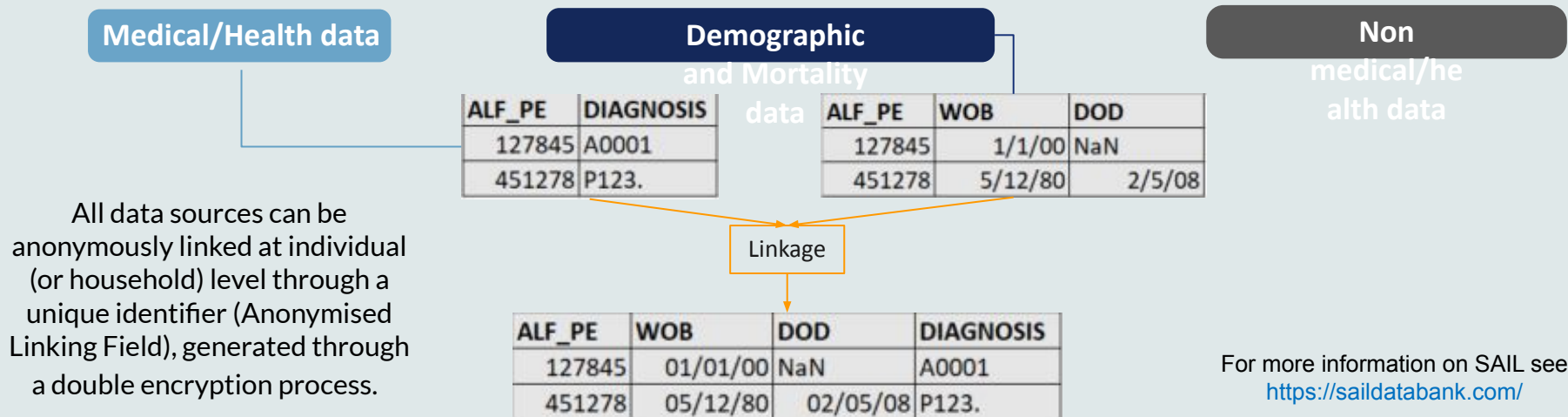
Roberta Chiovoloni, 23/11/2023



AI for Multiple Long-term Conditions Research Support Facility



The Secure Anonymised Information Linkage (SAIL) Databank is a Trusted Research Environment (TRE) which contains anonymised individual-level, population-scale, routinely-collected linkable demographic, health, administrative and socioeconomic data across multiple data sources.

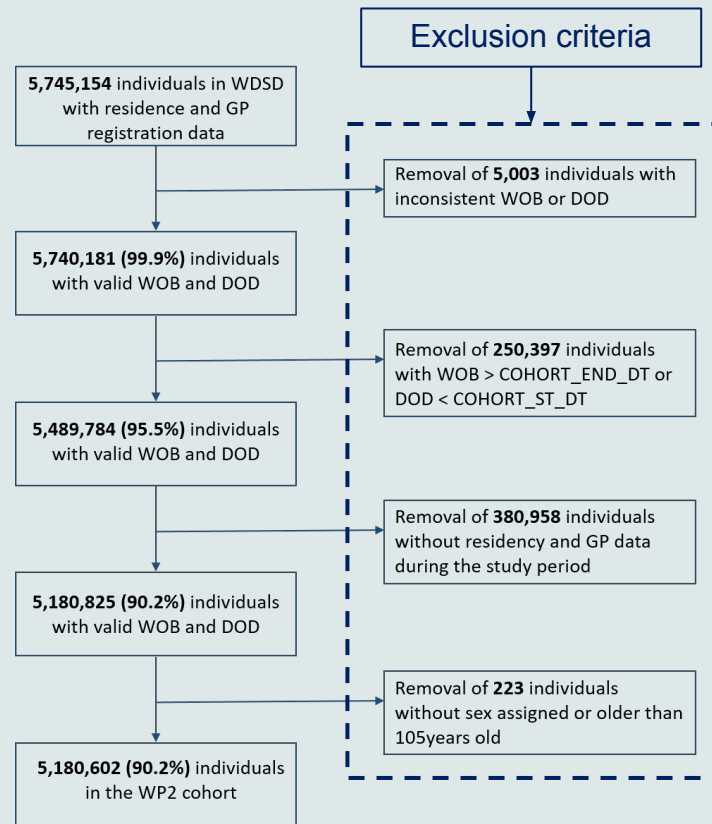


SAIL MELD-B COHORT CURATION

SMC is an *open longitudinal* population cohort including all people resident in Wales and registered with a Welsh general practice (GP) between 1st Jan 2000 and 31st Dec 2022.

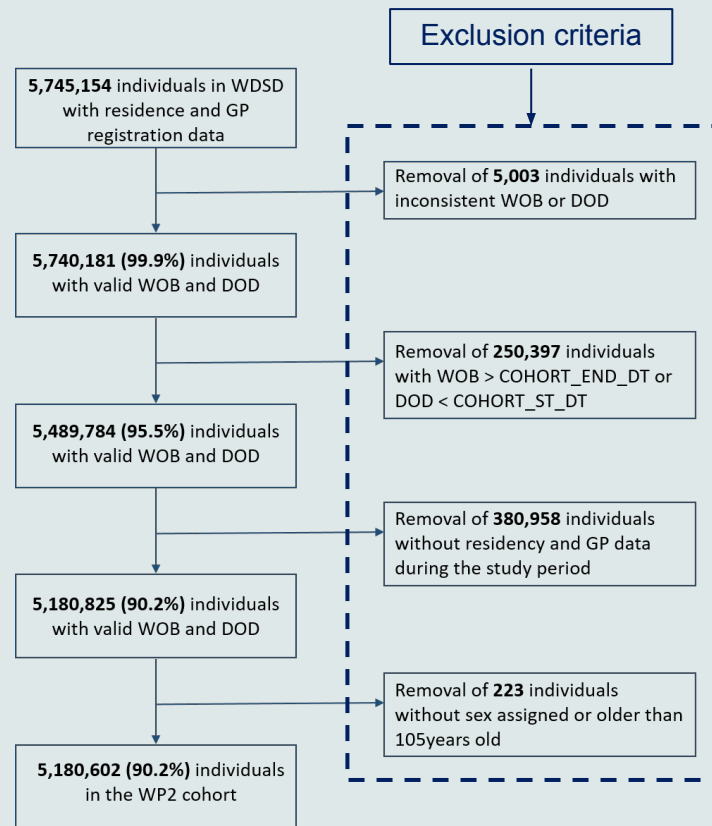
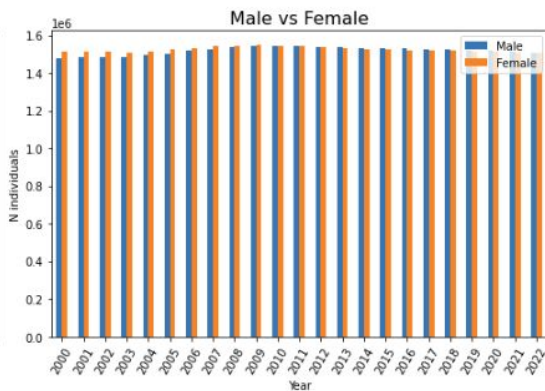
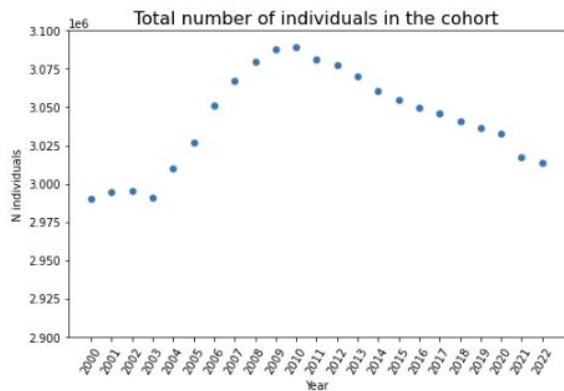
Cohort censorship:

1. Death
2. Loss to follow up
3. Study endpoint



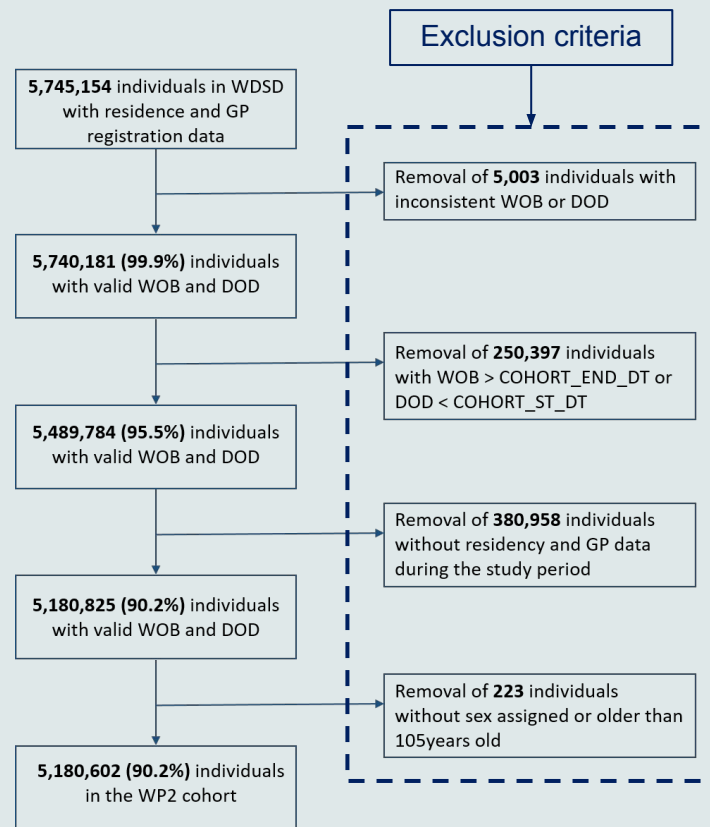
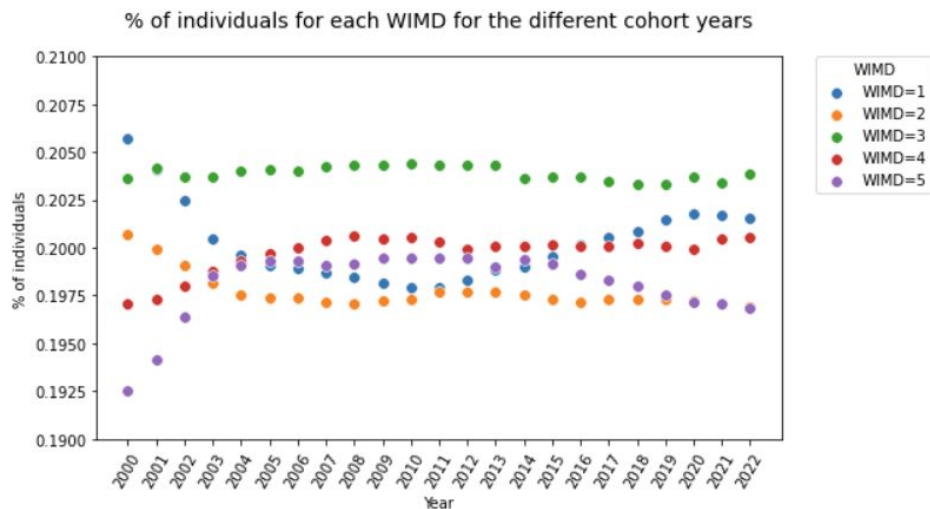
SAIL MELD-B COHORT CURATION

SMC is an *open longitudinal* population cohort including all people resident in Wales and registered with a Welsh general practice (GP) between 1st Jan 2000 and 31st Dec 2022.



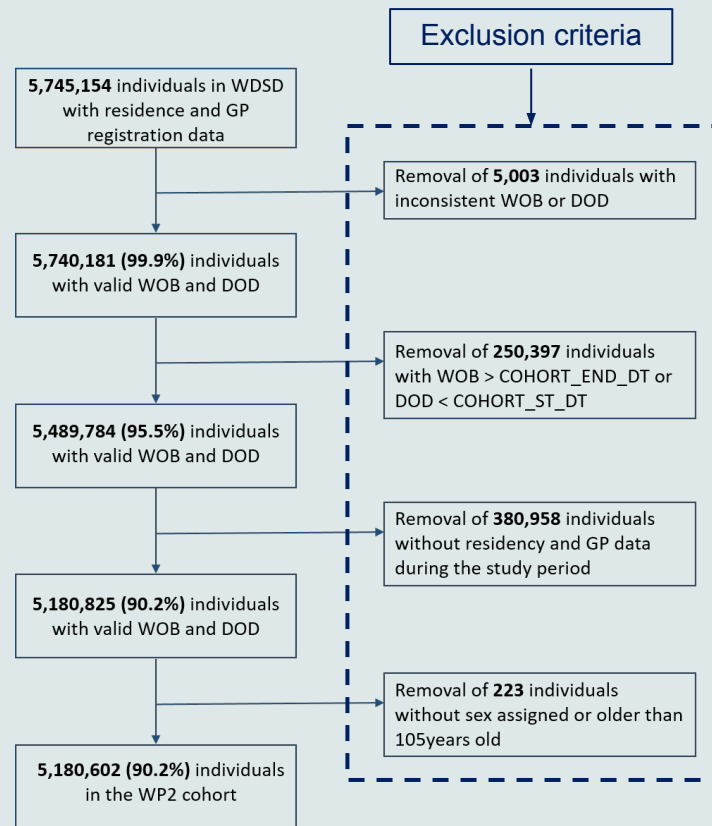
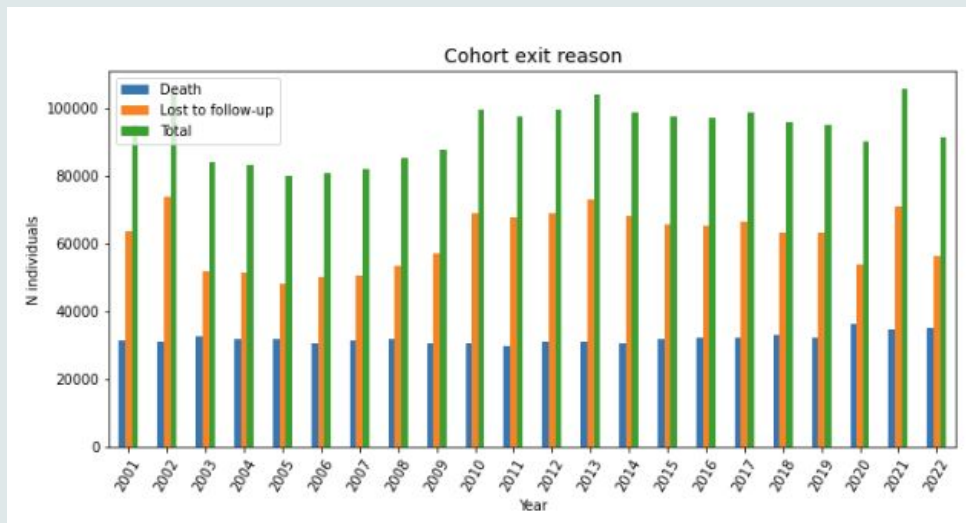
SAIL MELD-B COHORT CURATION

SMC is an *open longitudinal* population cohort including all people resident in Wales and registered with a Welsh general practice (GP) between 1st Jan 2000 and 31st Dec 2022.



SAIL MELD-B COHORT CURATION

SMC is an *open longitudinal* population cohort including all people resident in Wales and registered with a Welsh general practice (GP) between 1st Jan 2000 and 31st Dec 2022.



To identify all relevant events recorded in the various data source, we linked individuals in SMC to all available demographic, health, administrative and socioeconomic data sources



This allows retrieval of all available and required information (such as diagnosis, hospital appointments, ...) for each individual in the SMC .

