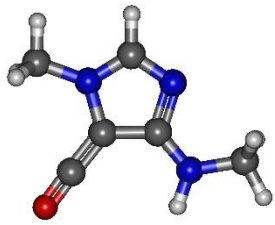
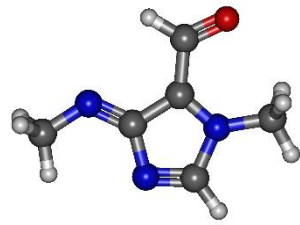


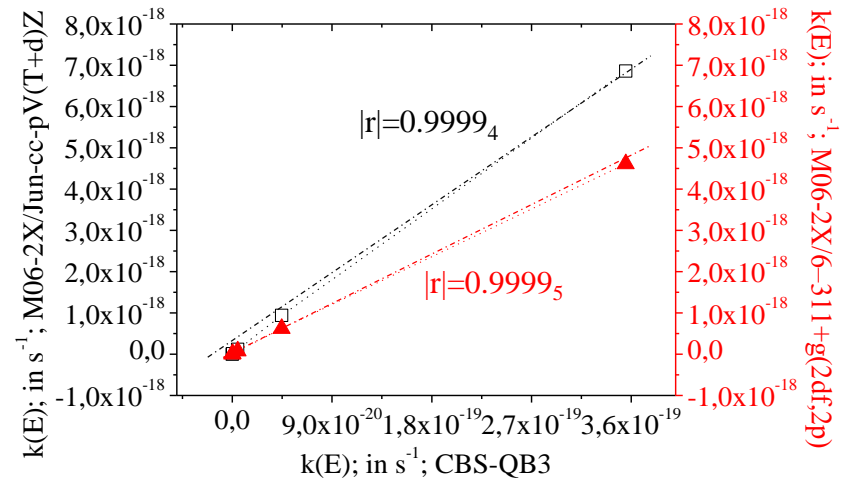
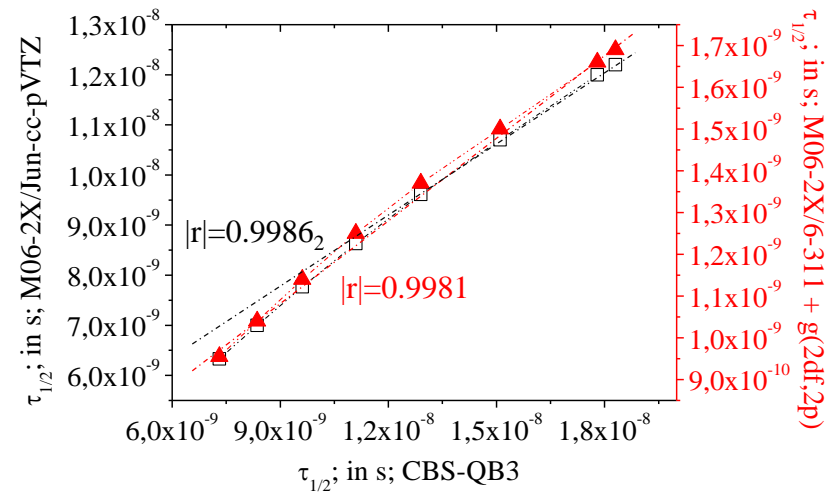
CAFF_138a



CAFF_138b

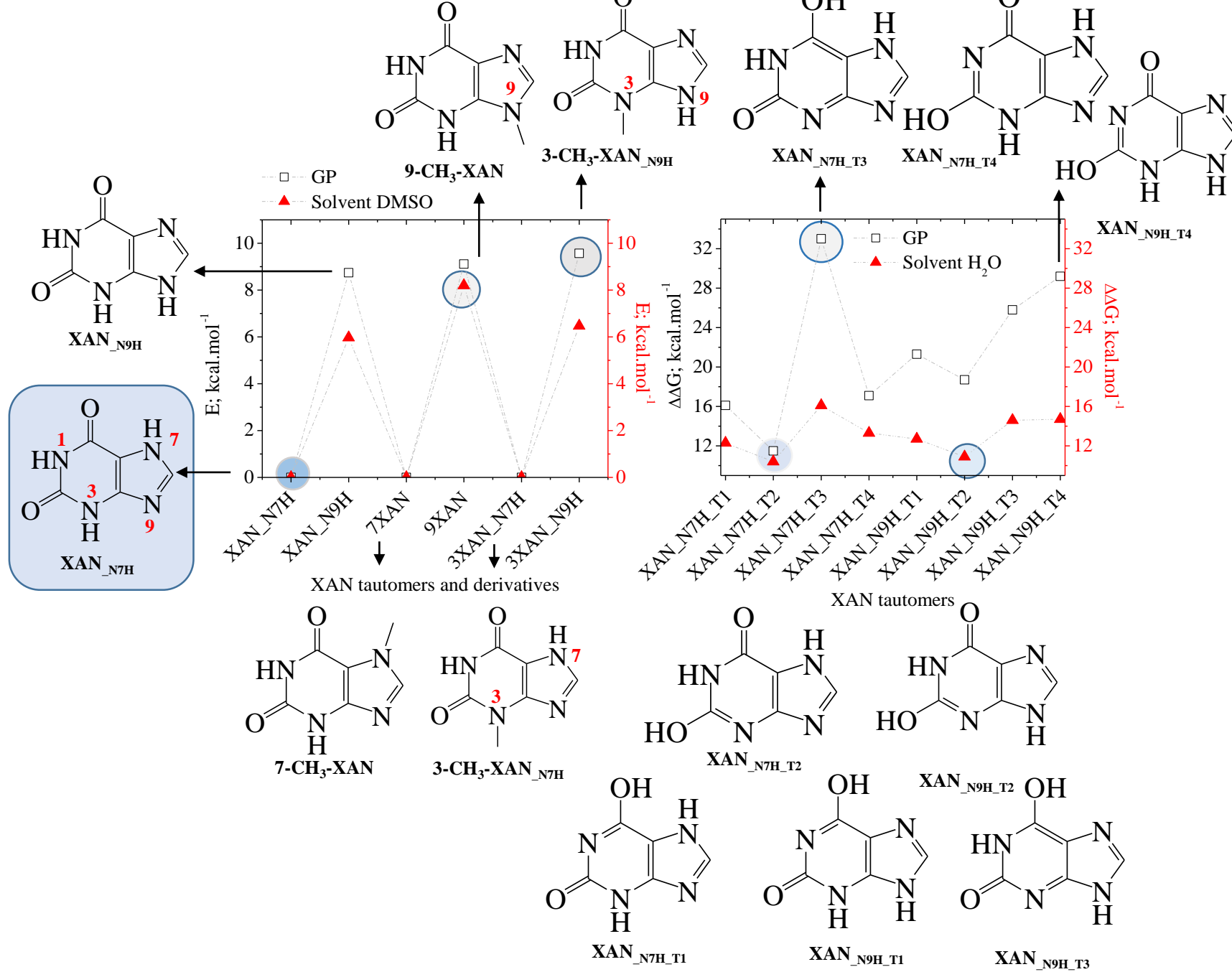


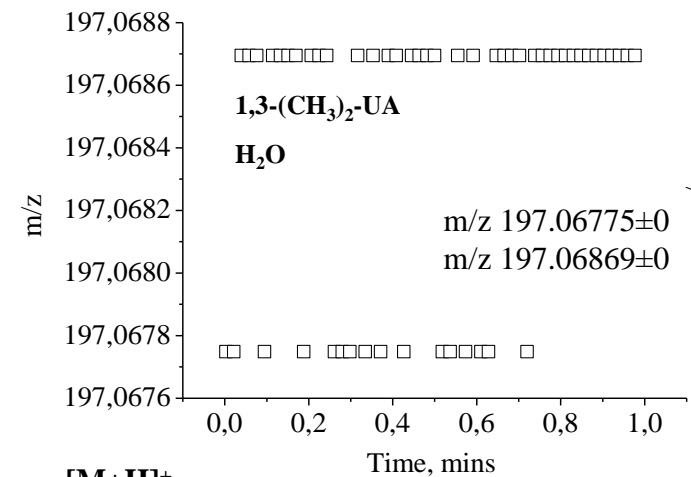
CAFF_138c



$$k(E) = \left(\frac{E - E_0}{E} \right) \times \frac{\prod_{i=1}^n \nu_i^0}{\prod_{i=1}^n \nu_i^s}$$

$$\Omega = \frac{\sqrt{18 \times \pi}}{16} \times \frac{z \times e}{\sqrt{k_B \times T}} \times \sqrt{\frac{1}{m_I} + \frac{1}{m_B}} \times \frac{t_d \times E}{L} \times \frac{760}{P} \times \frac{T}{273.2} \times \frac{1}{N}$$

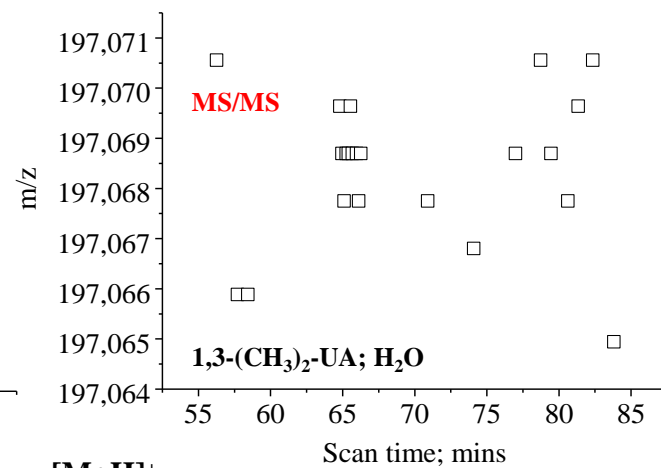




[M+H]⁺

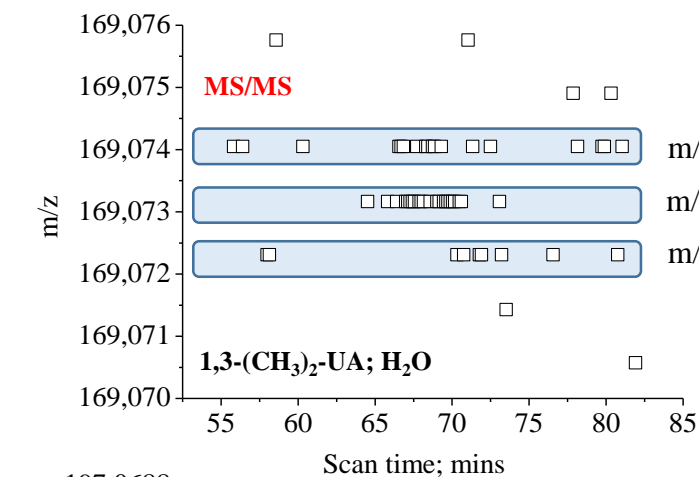
m/z **197.0684₁**; $sd(yEr\pm) = 4.36022 \cdot 10^{-4}$;

$se(yEr\pm) = 5.9335 \cdot 10^{-5}$



[M+H]⁺

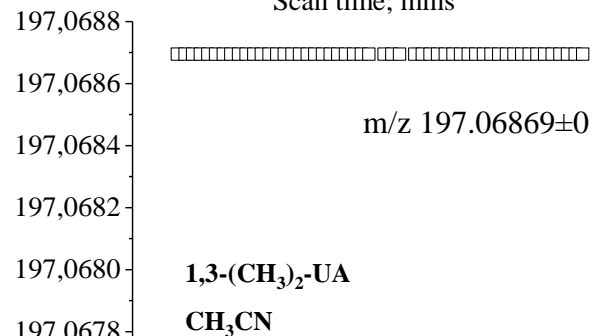
m/z **197.0684₄**±0.00151



m/z 169.07405±0

m/z 169.07317±0

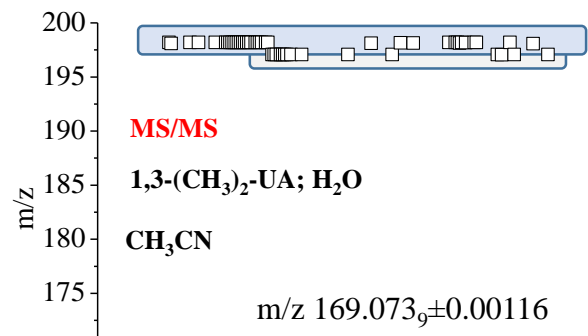
m/z 169.07231±0



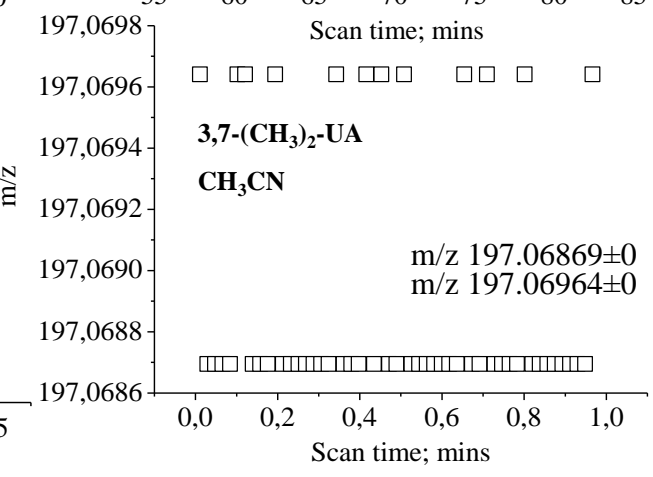
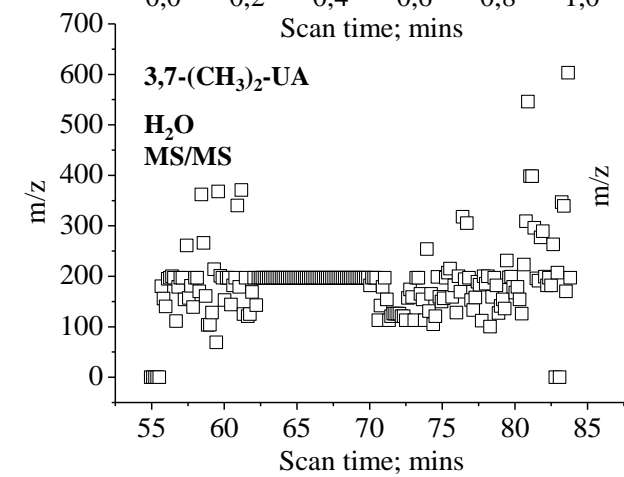
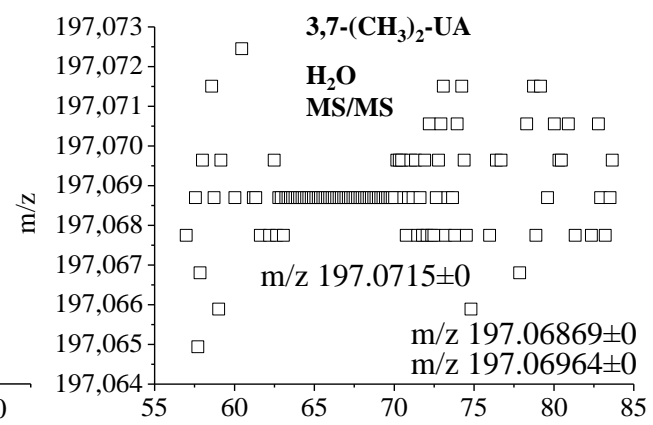
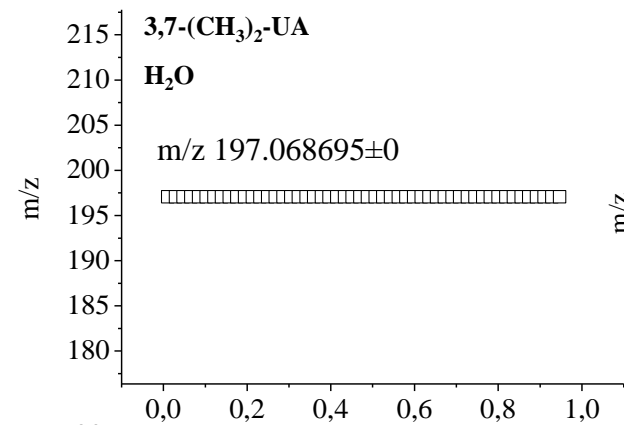
m/z 197.06869±0

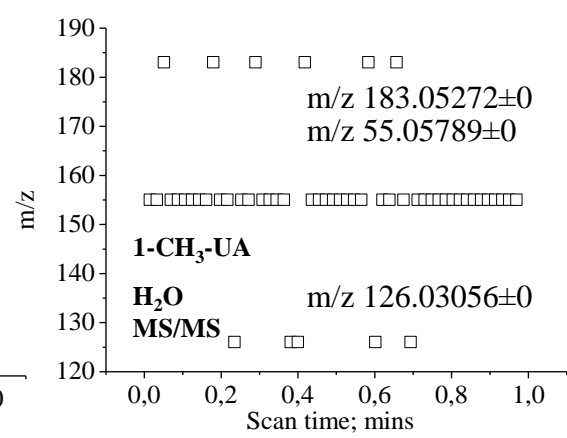
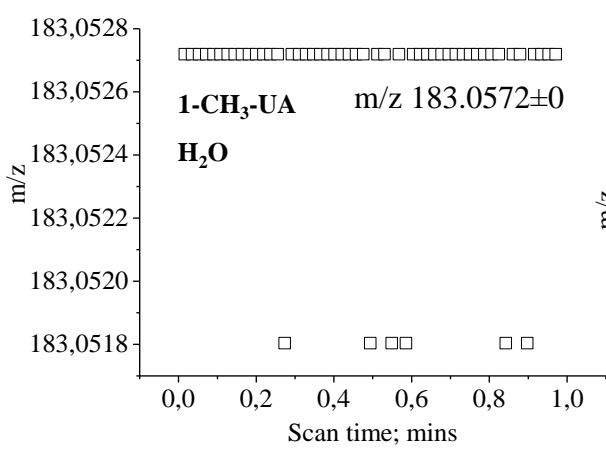
m/z 198.17₉₉₂±0.01866

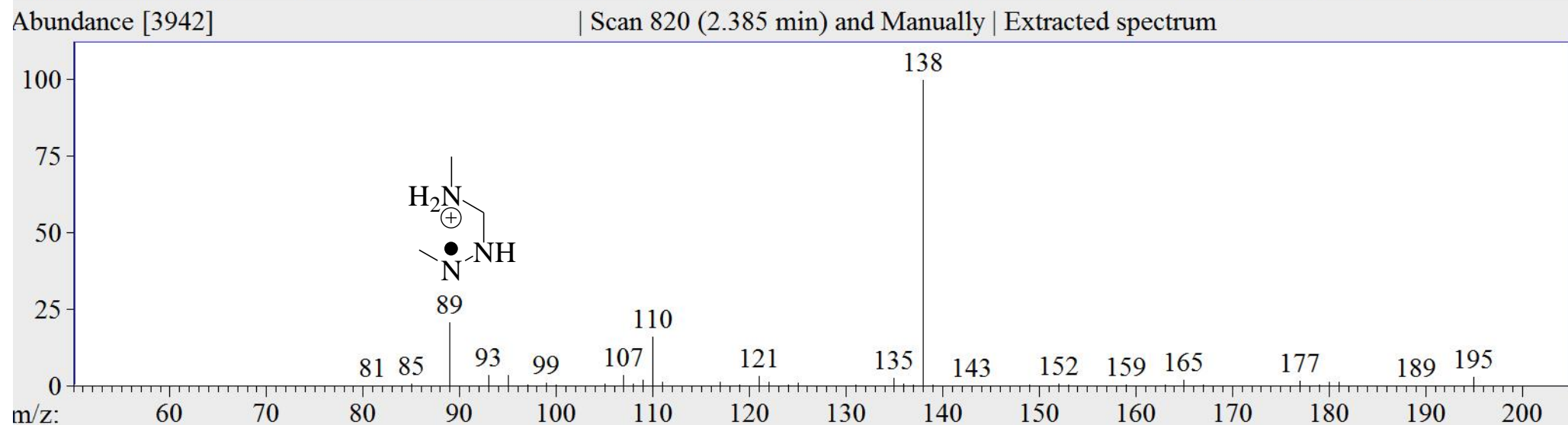
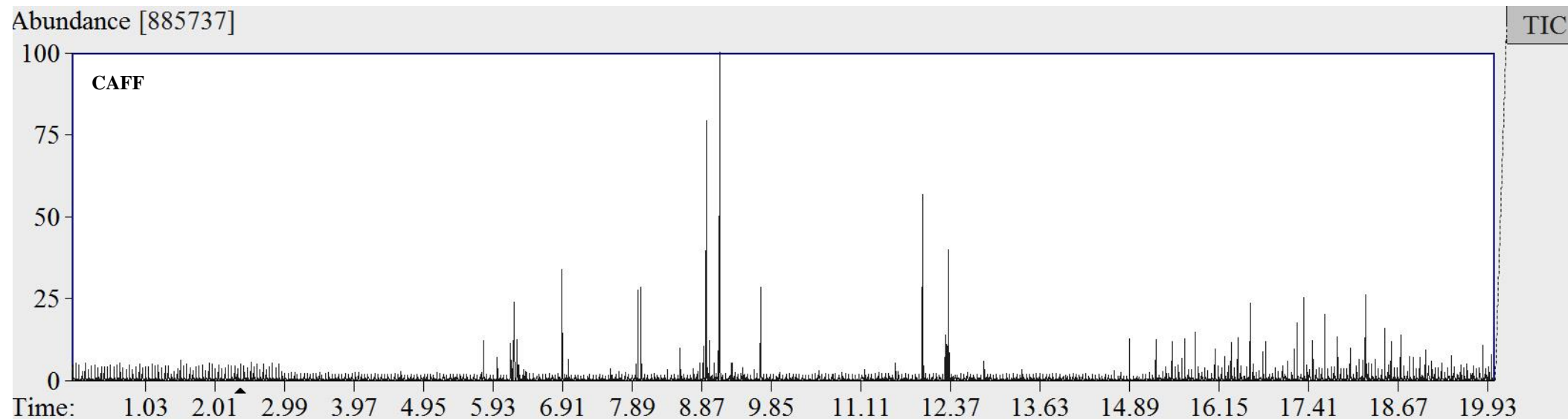
m/z 197.068₂₅±0.00221

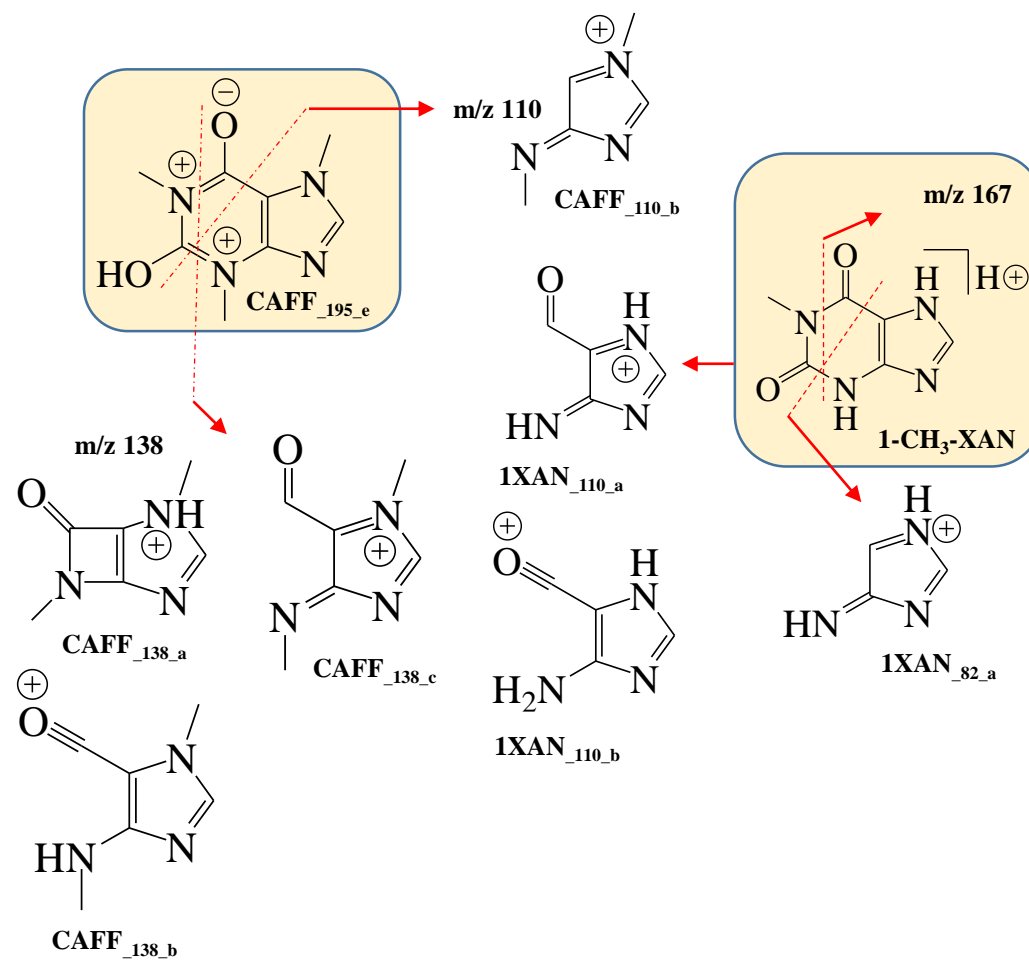


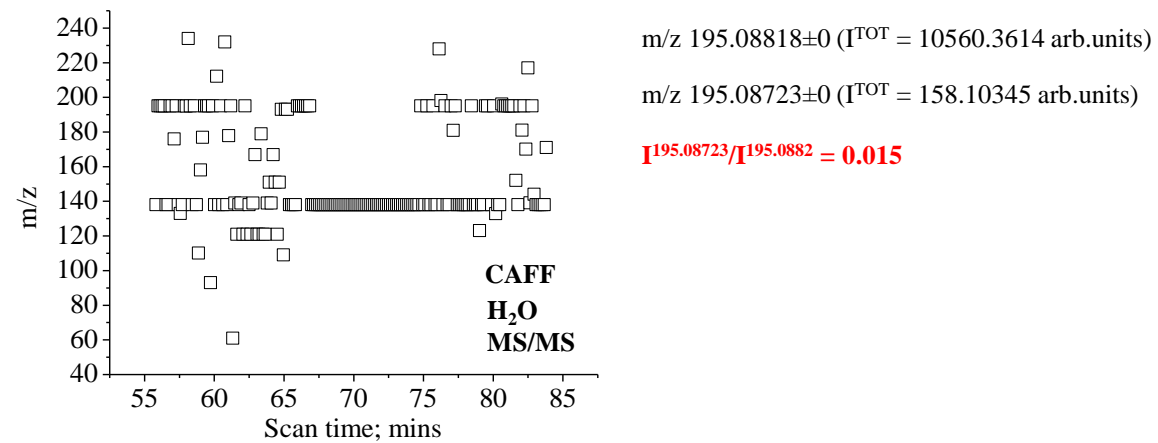
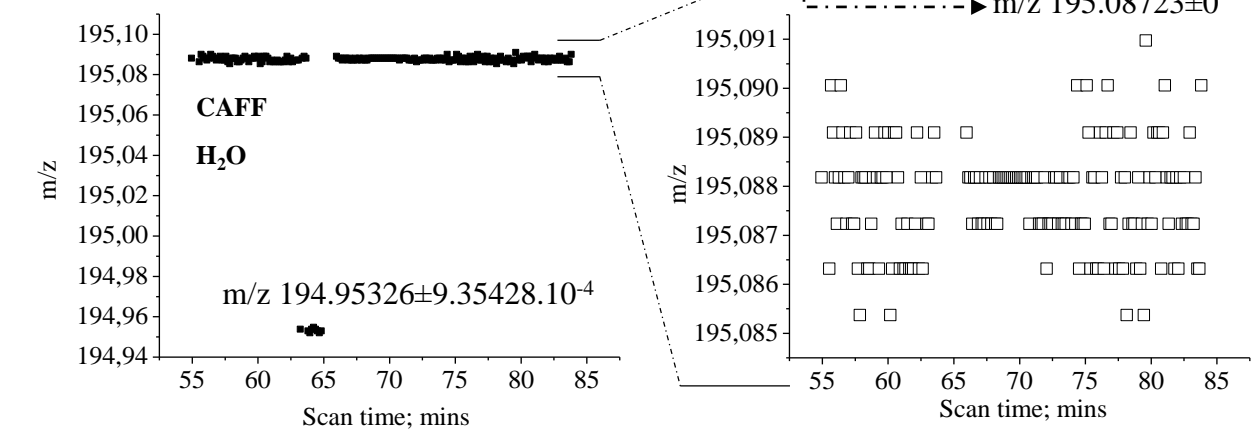
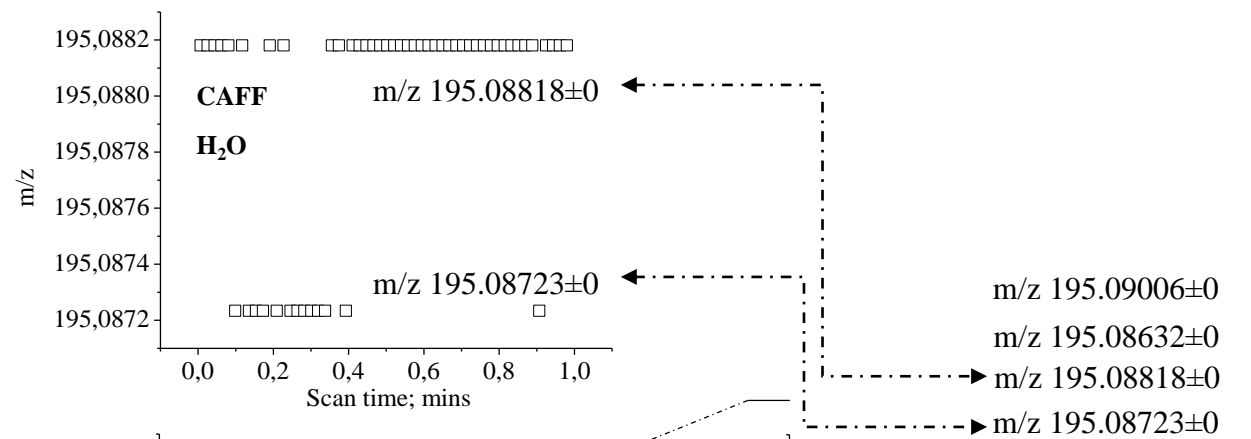
m/z 169.073₉±0.00116

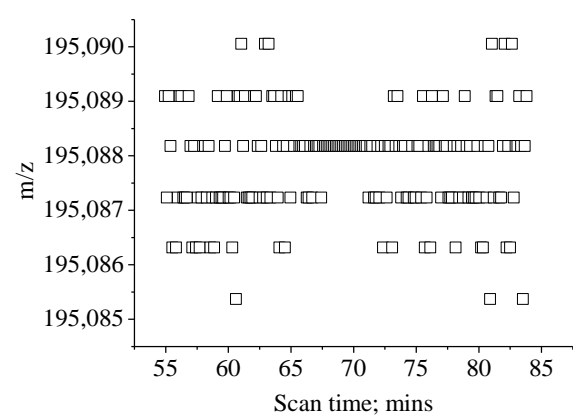
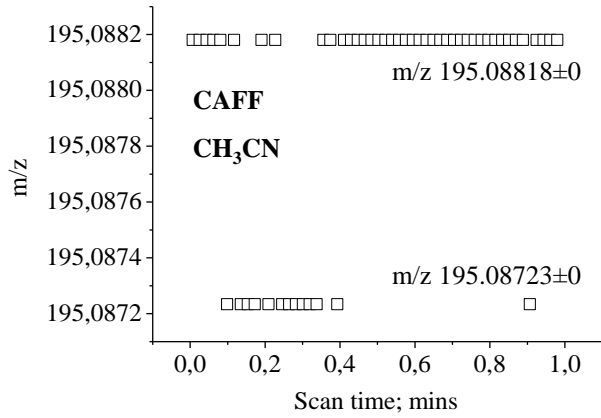








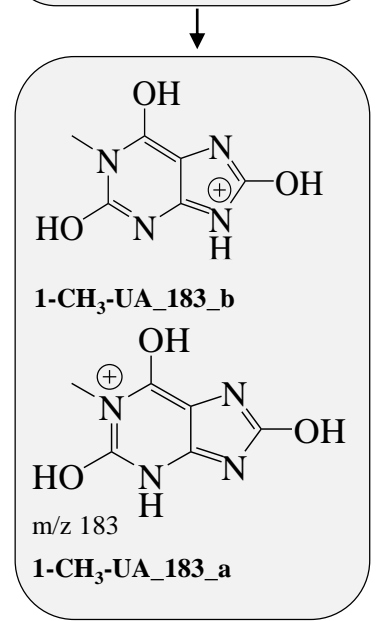
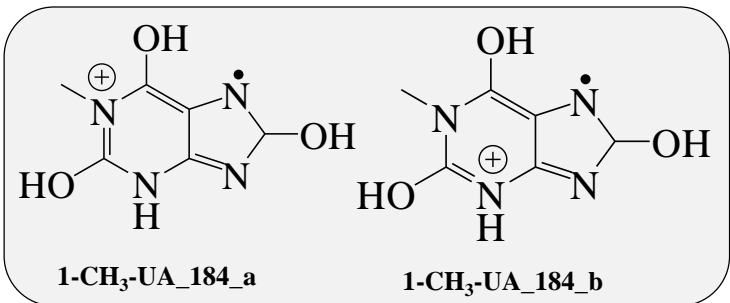
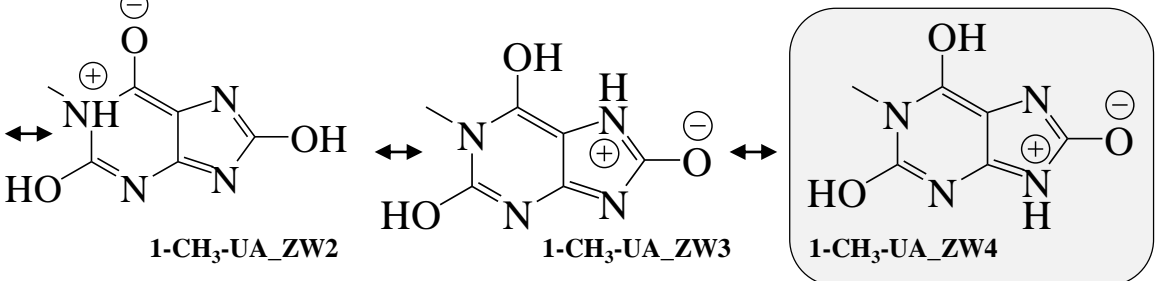
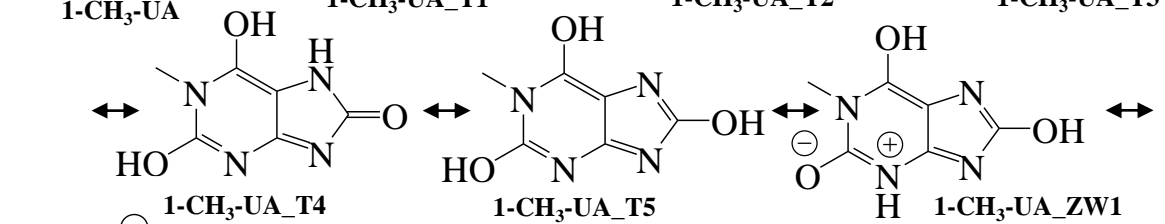
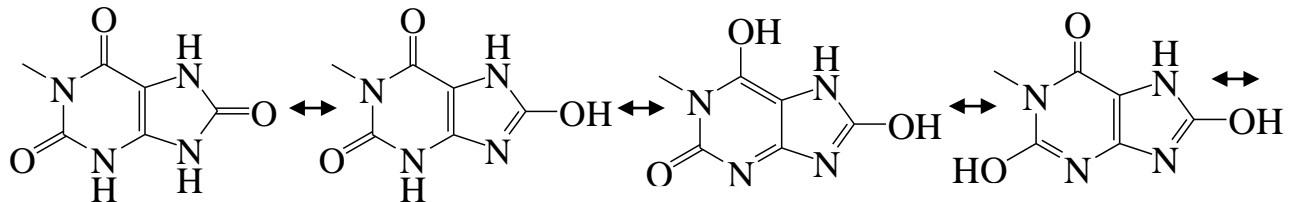


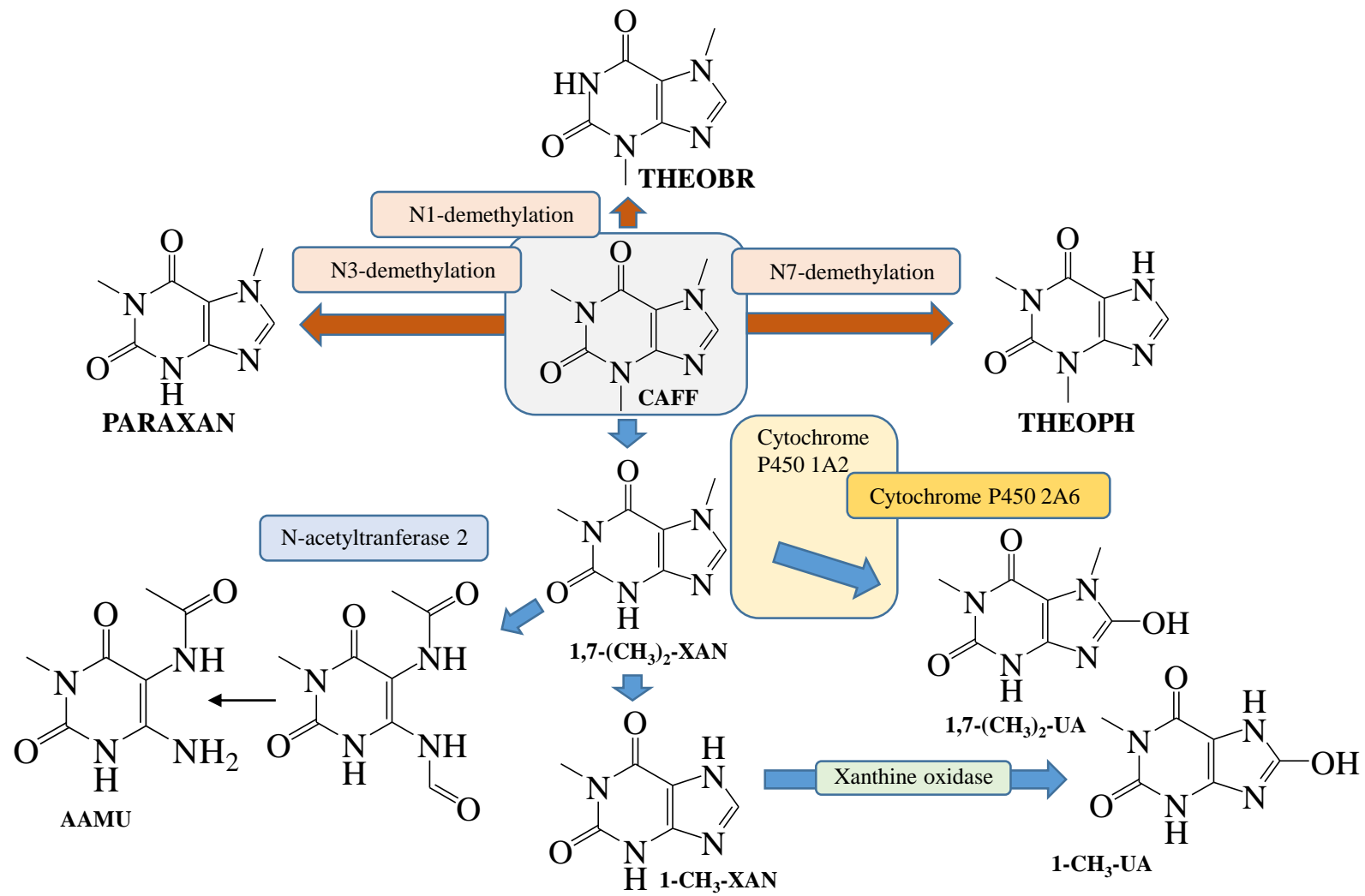


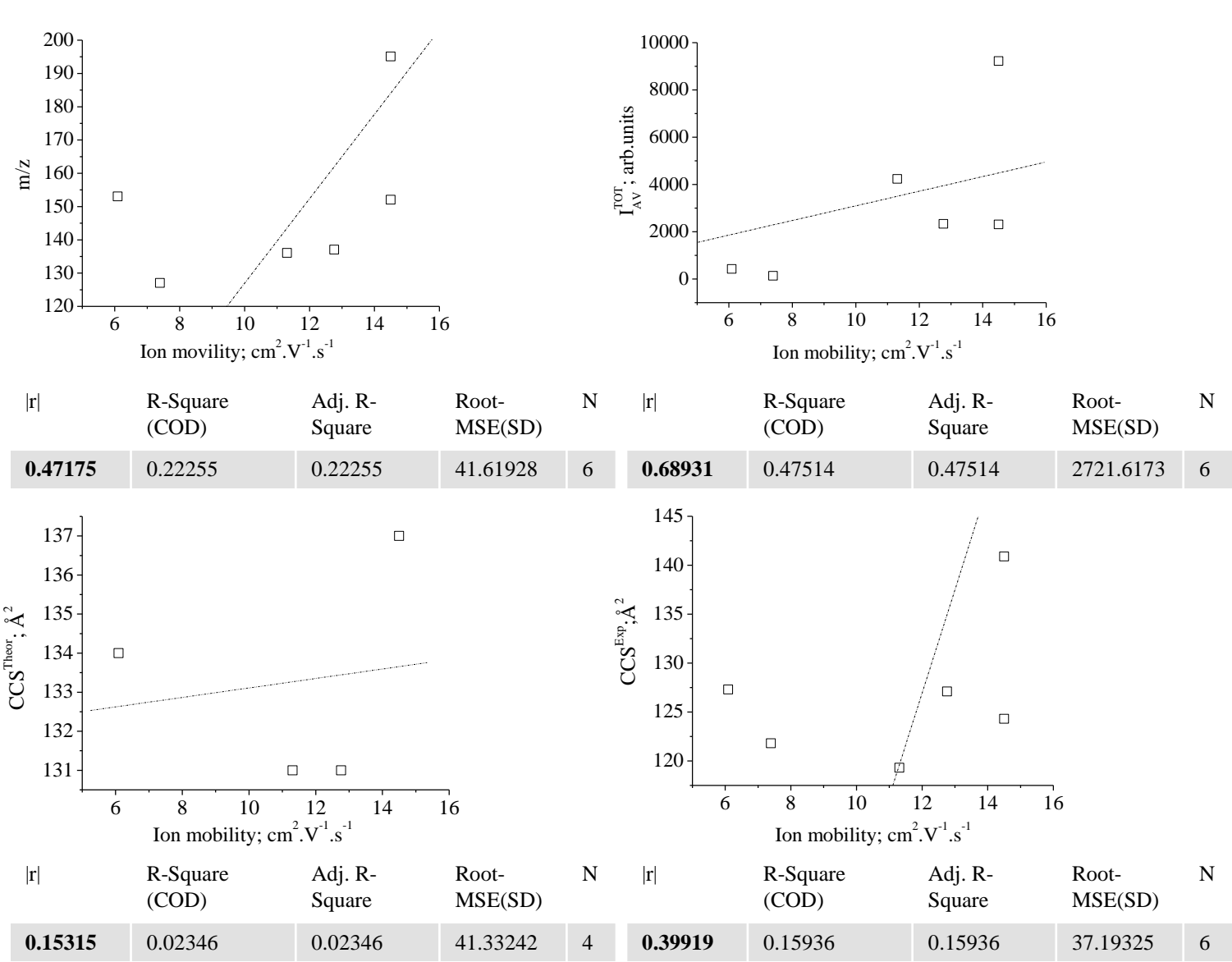
m/z 195.08818±0 ($I^{\text{TOT}} = 12403.59027$ arb.units)

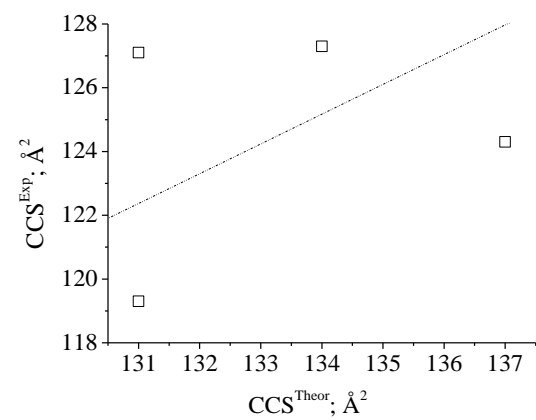
m/z 195.08723±0 ($I^{\text{TOT}} = 459.27083$ arb.units)

$I^{195.08723}/I^{195.0882} = 0.037$

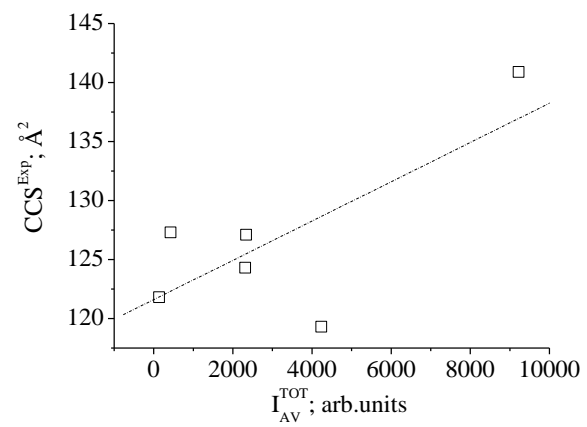




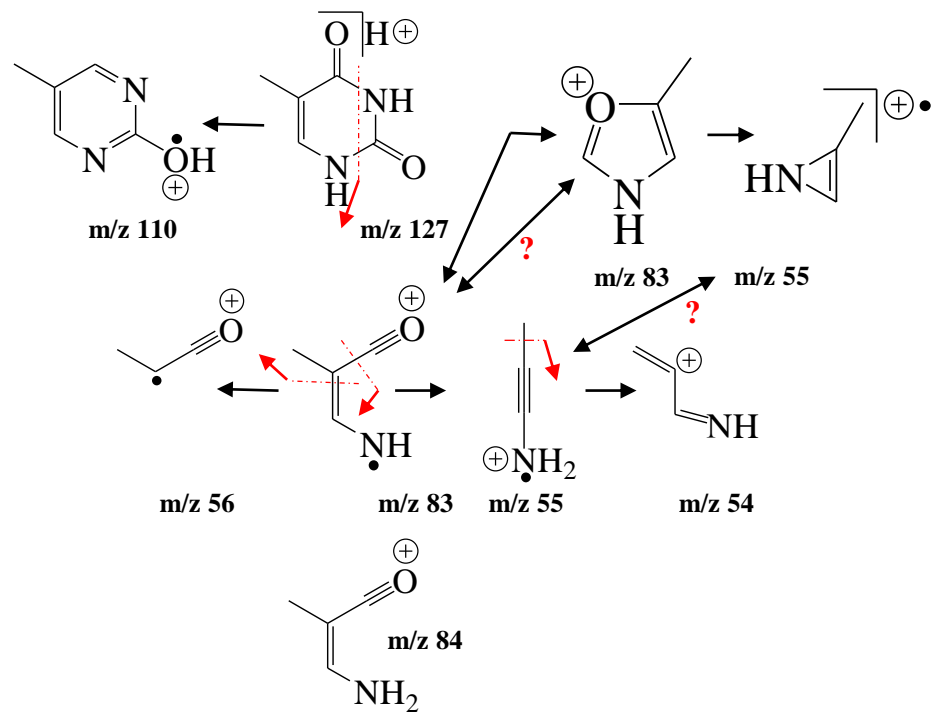
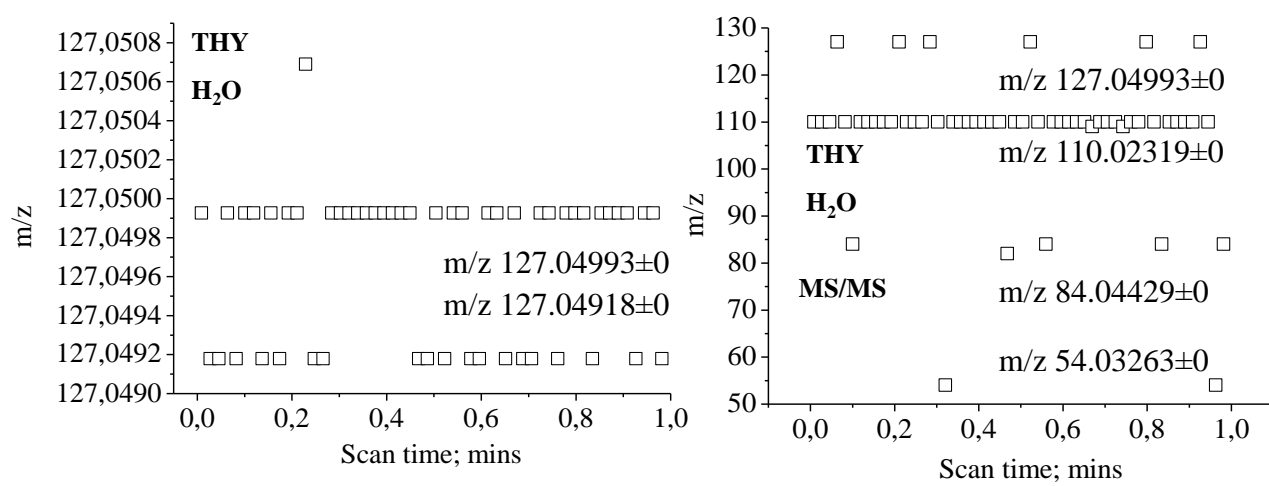


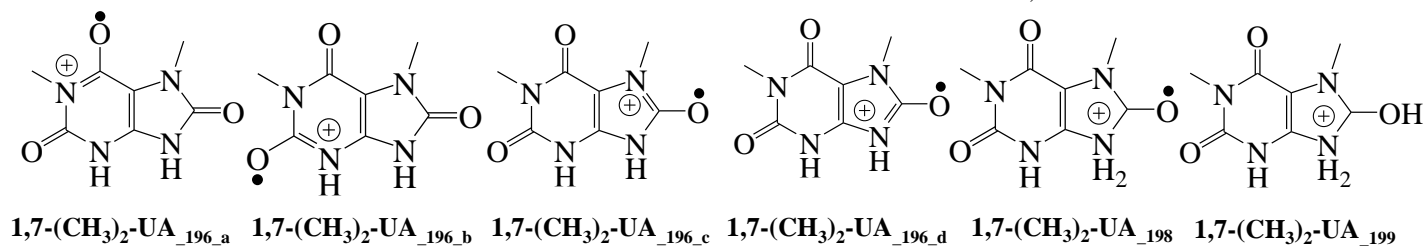
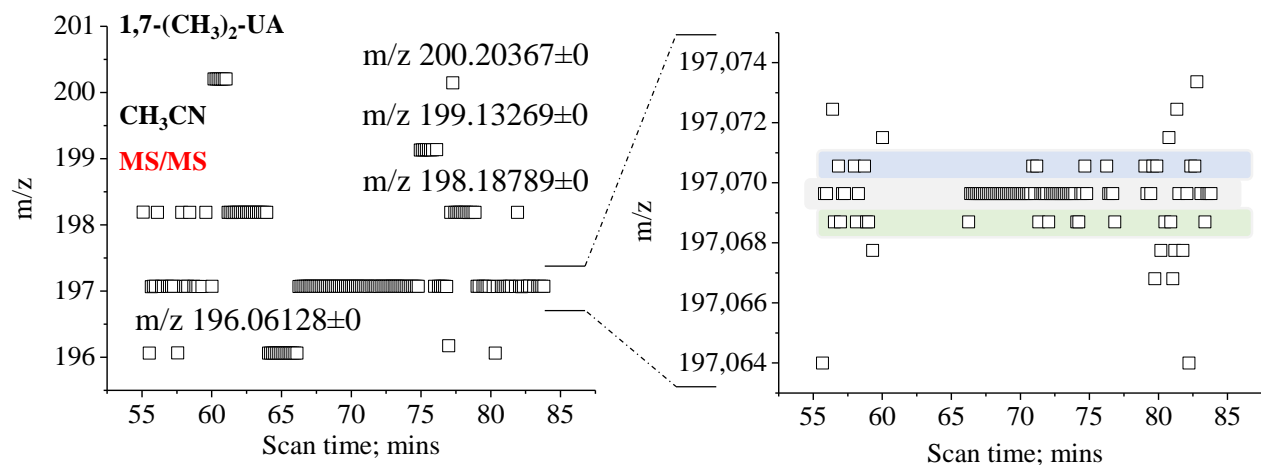
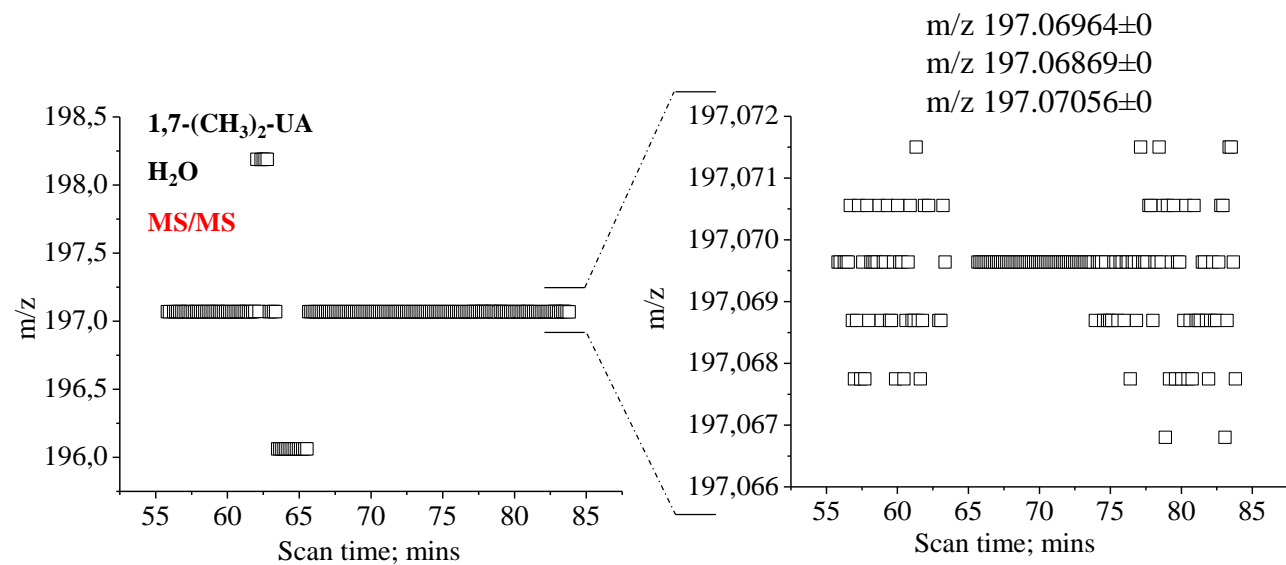


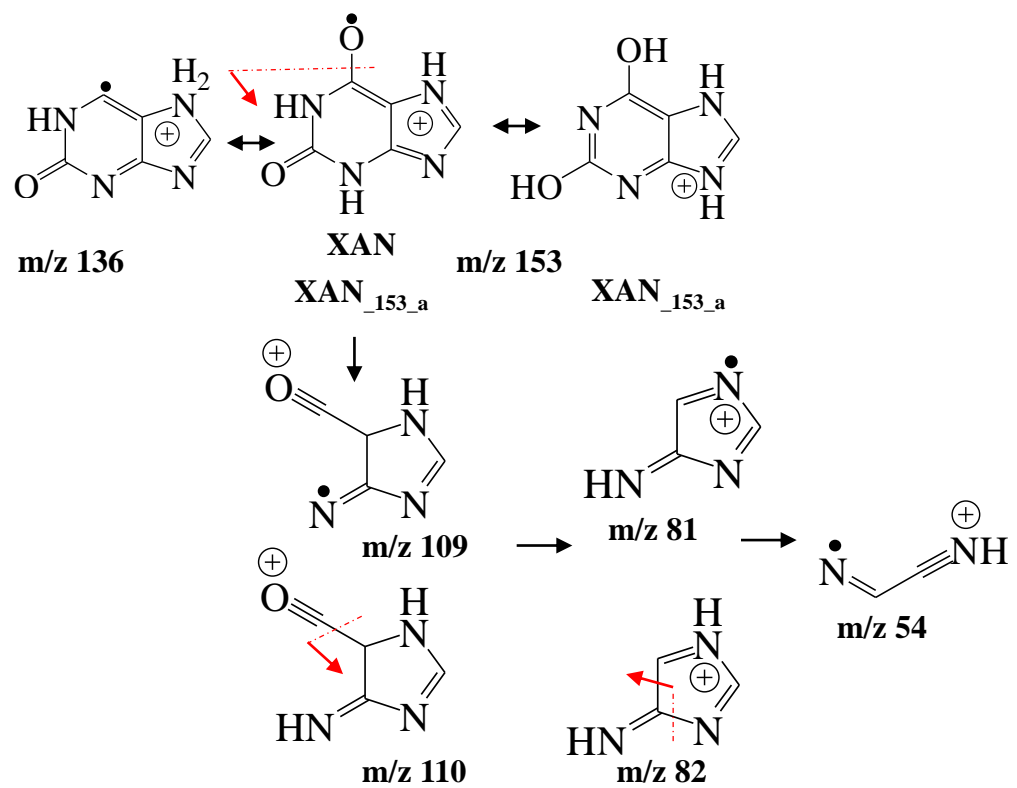
r	R-Square (COD)	Adj. R-Square	Root-MSE(SD)	N
0.22417	0.05025	0.05025	4.07547	4

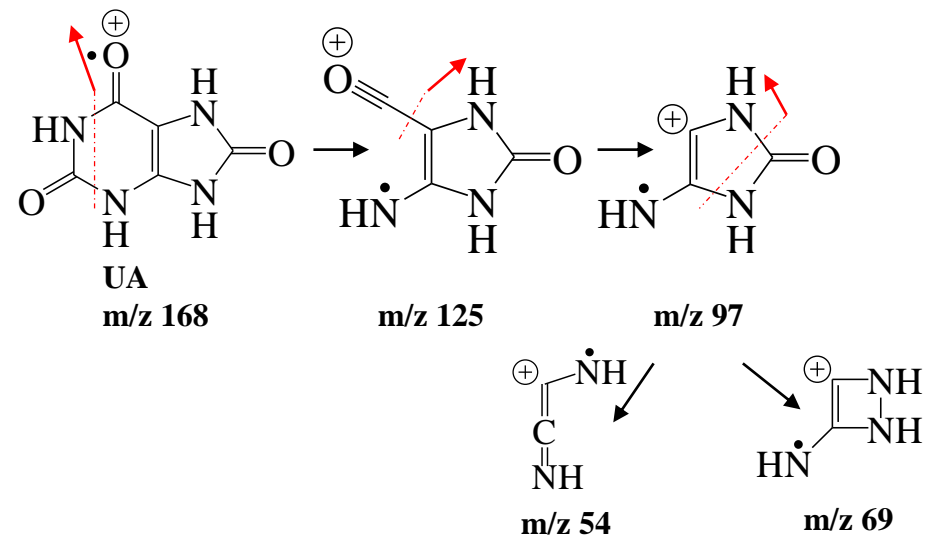


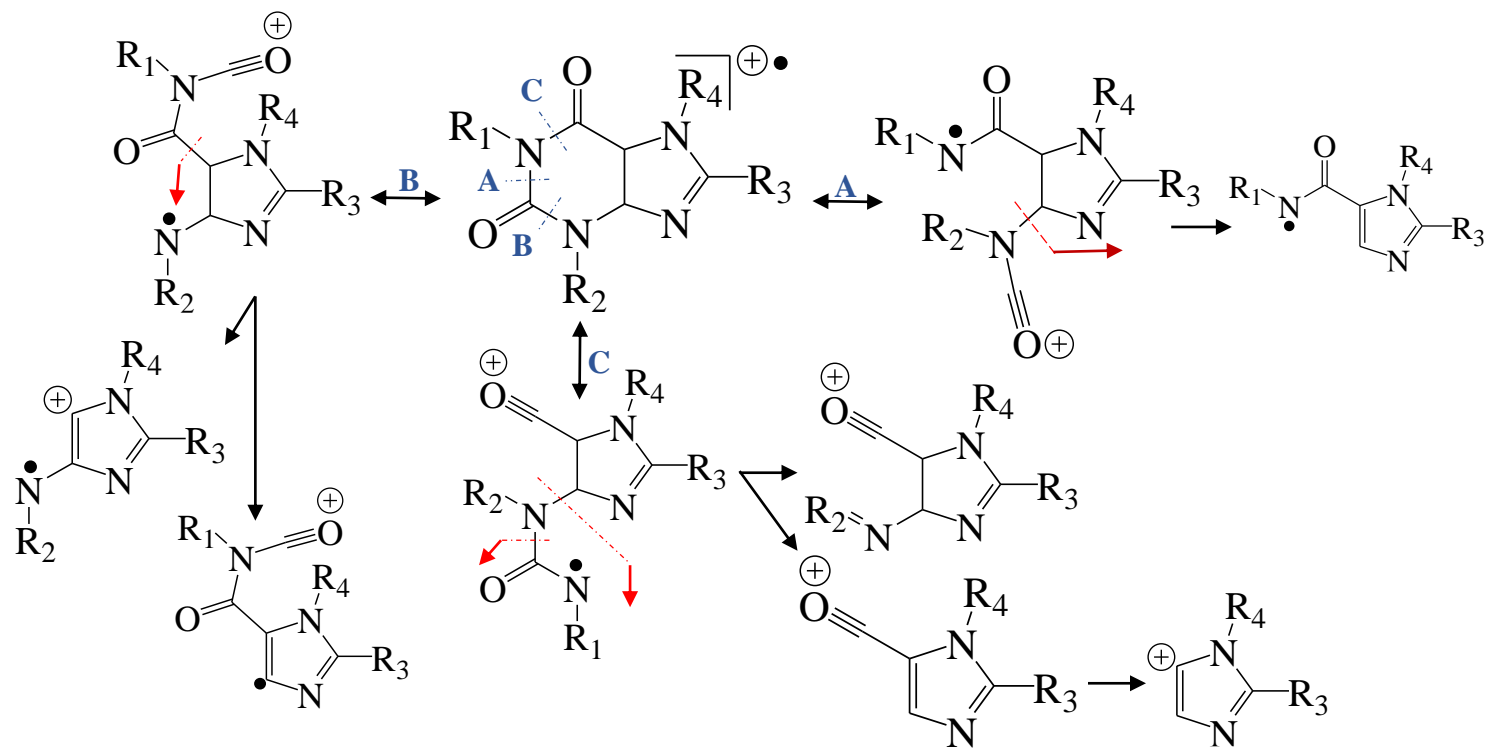
r	R-Square (COD)	Adj. R-Square	Root-MSE(SD)	N
0.73475	0.53985	0.53985	93.41506	6

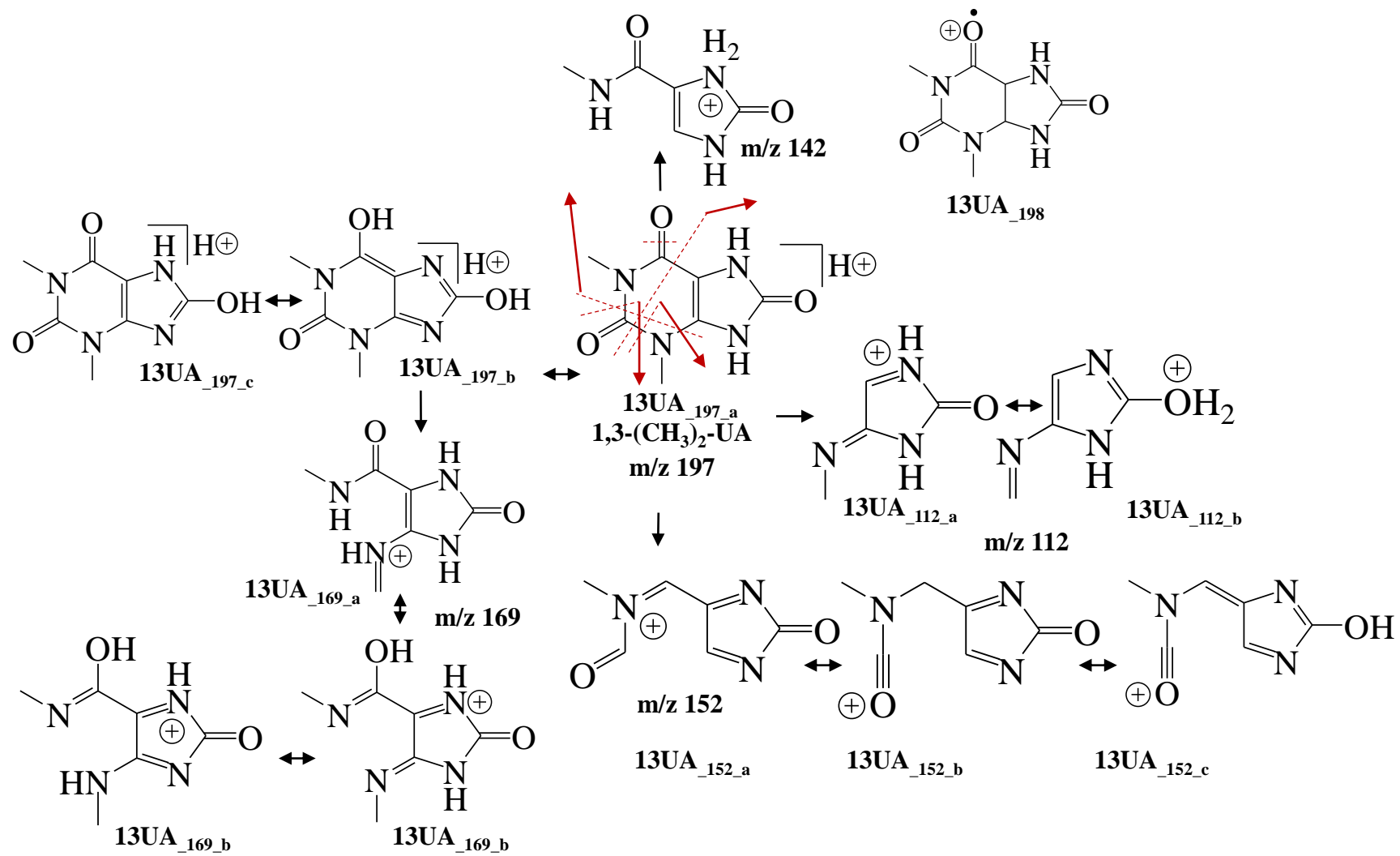


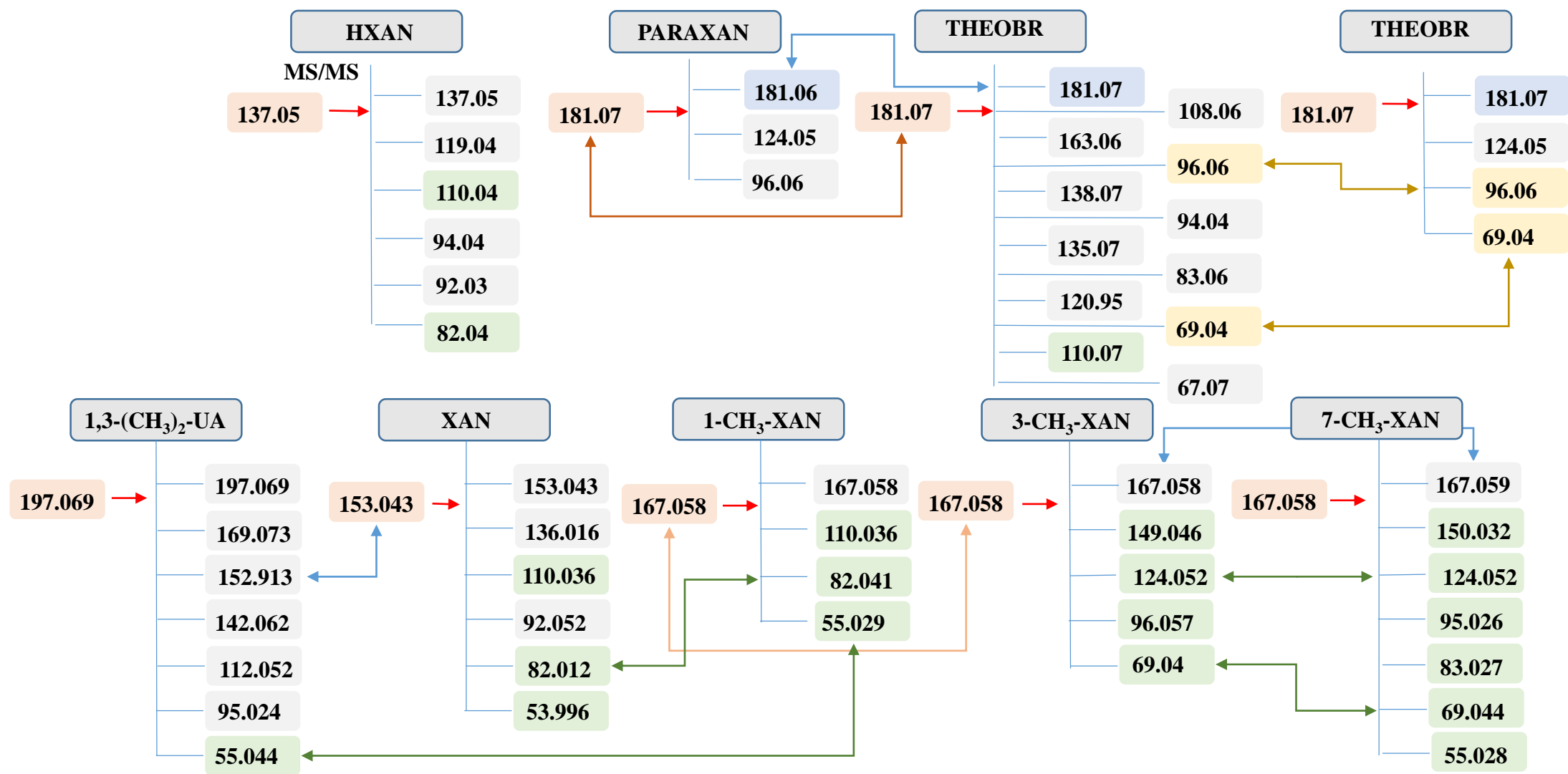


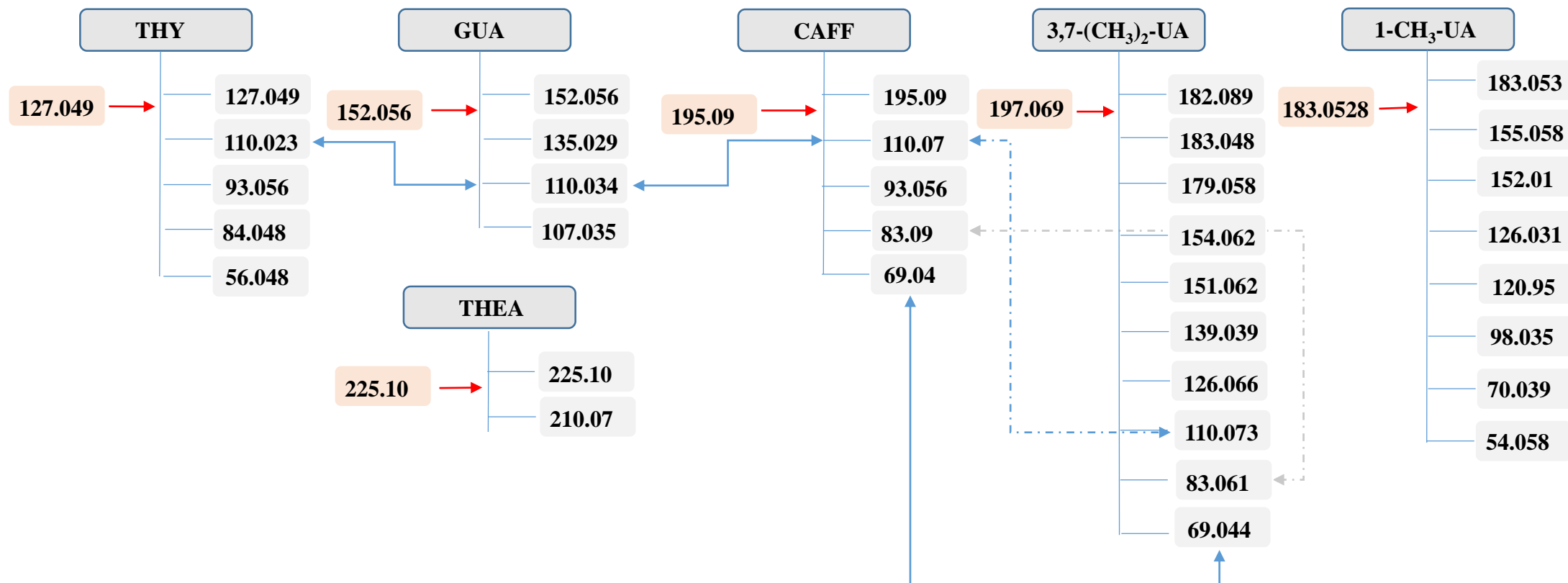


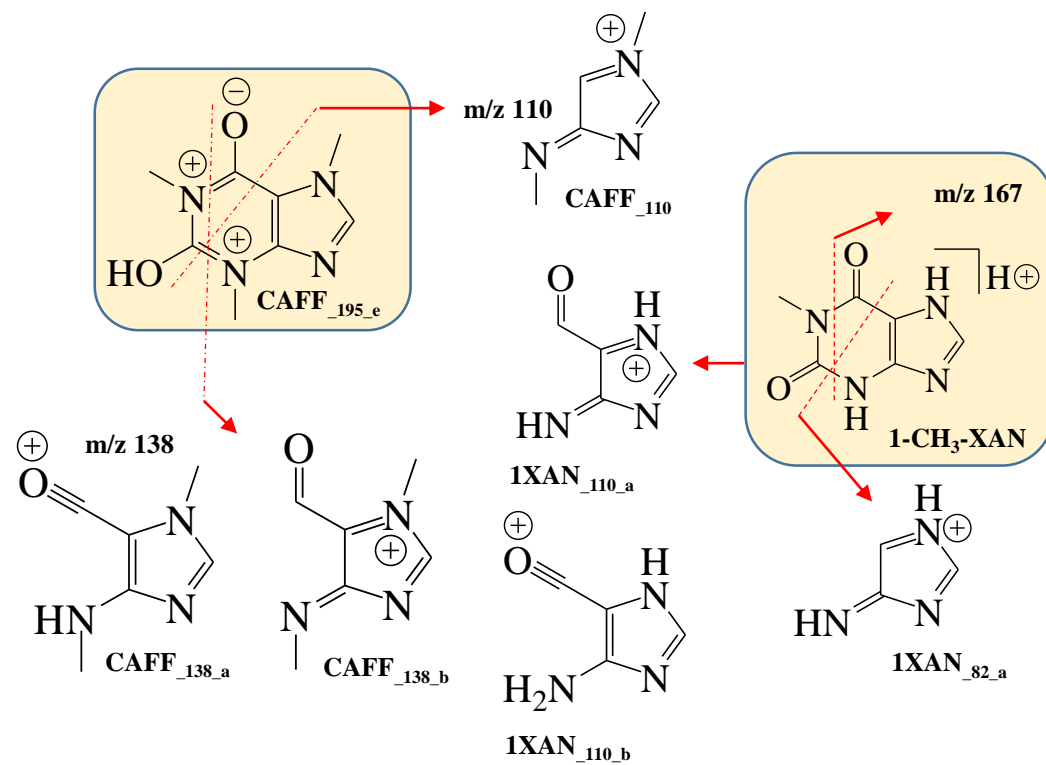


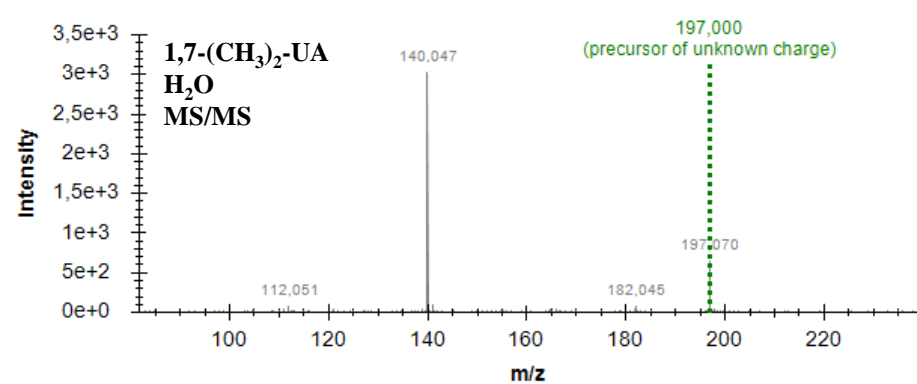
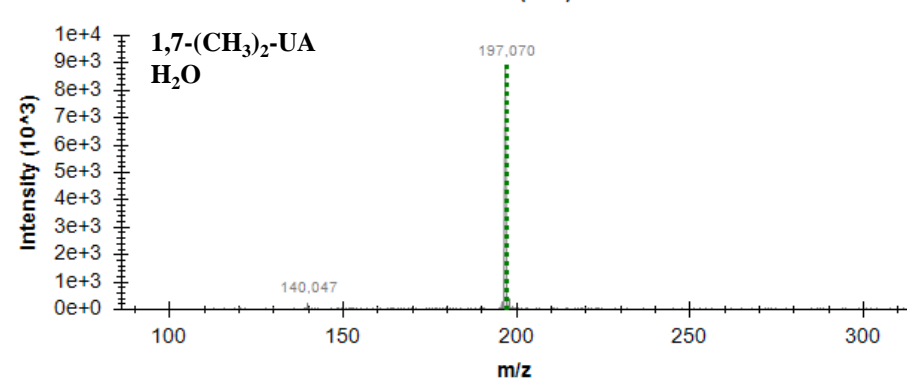
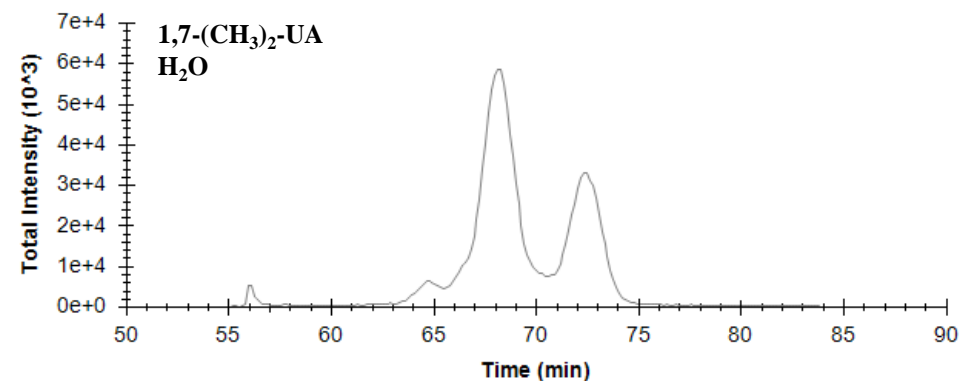
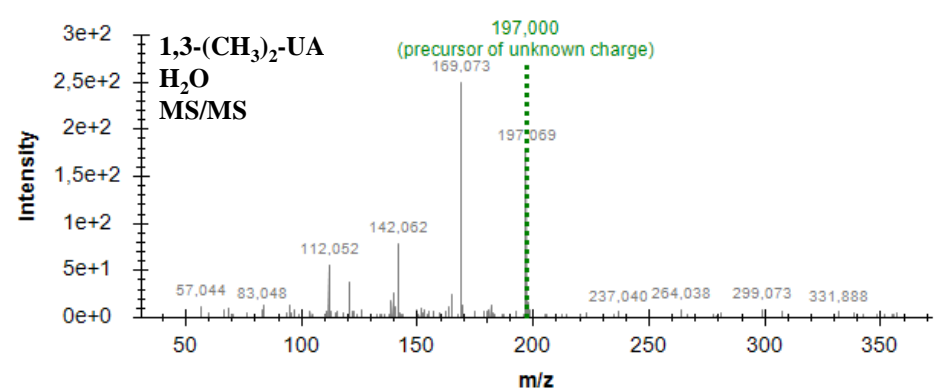
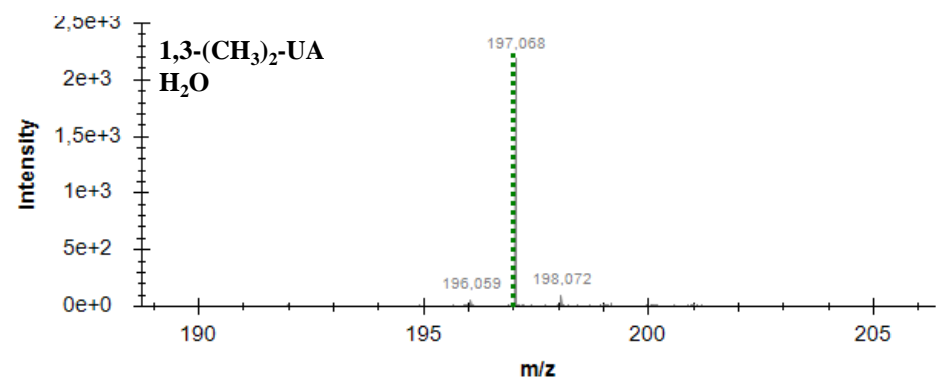
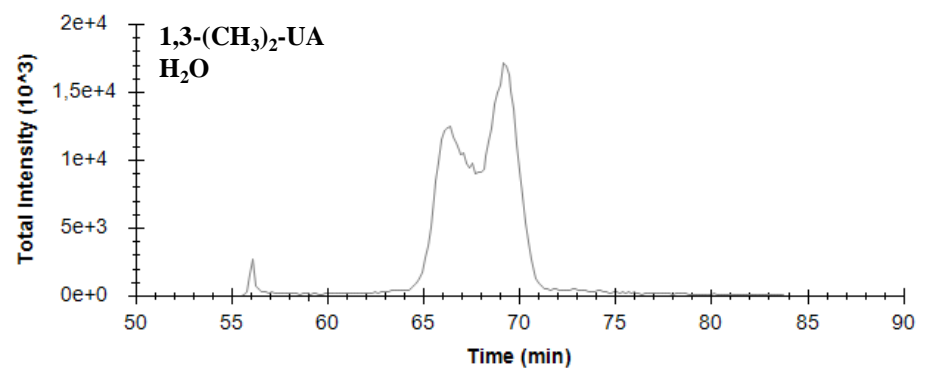


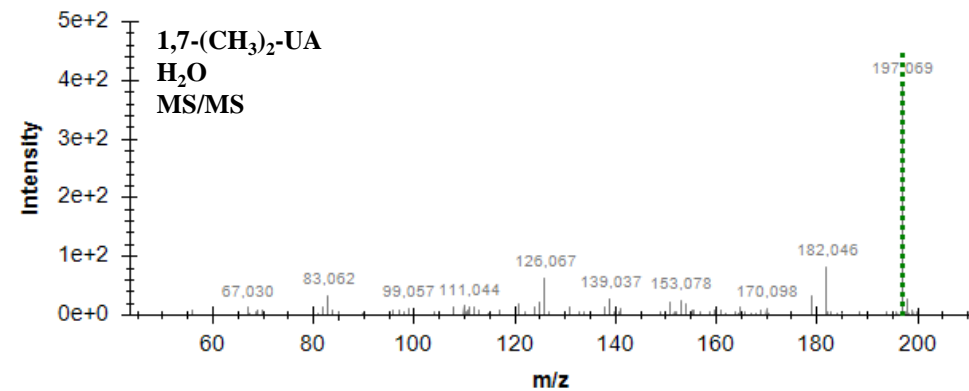
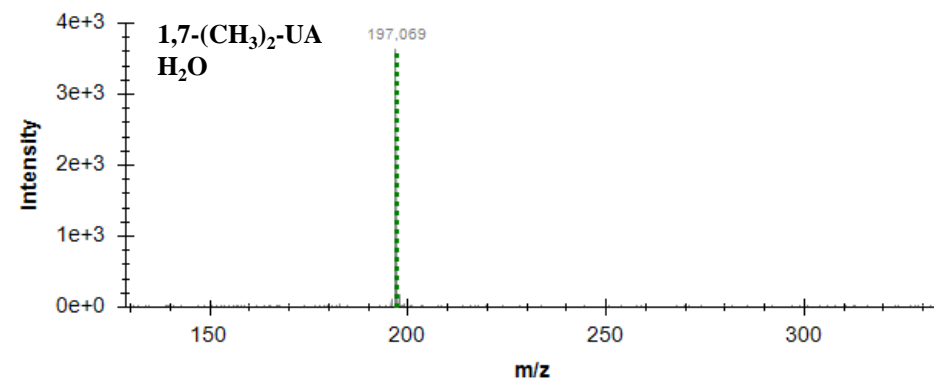
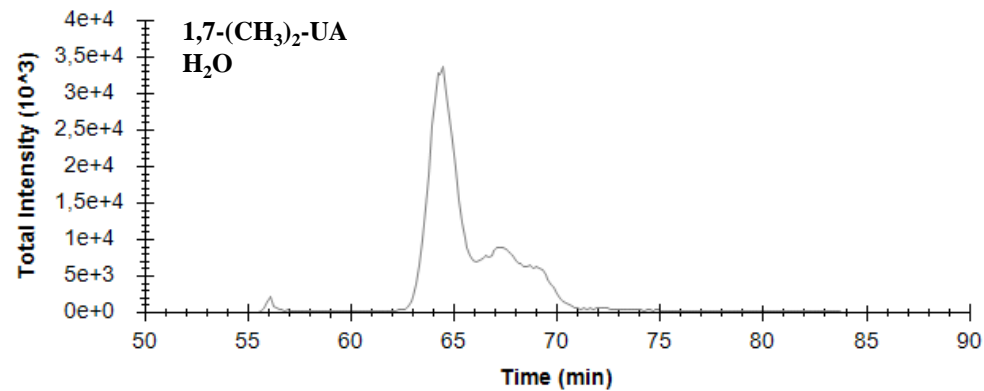
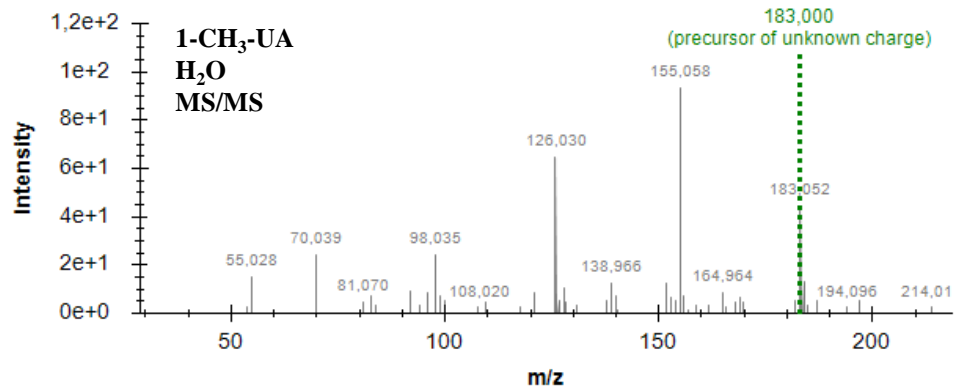
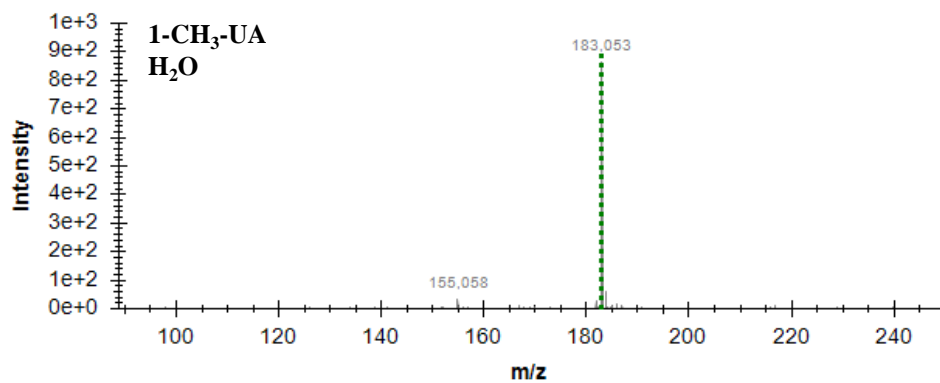
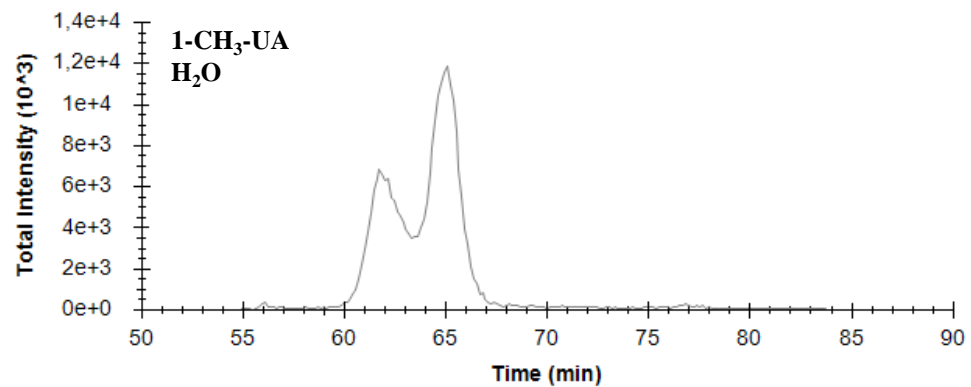


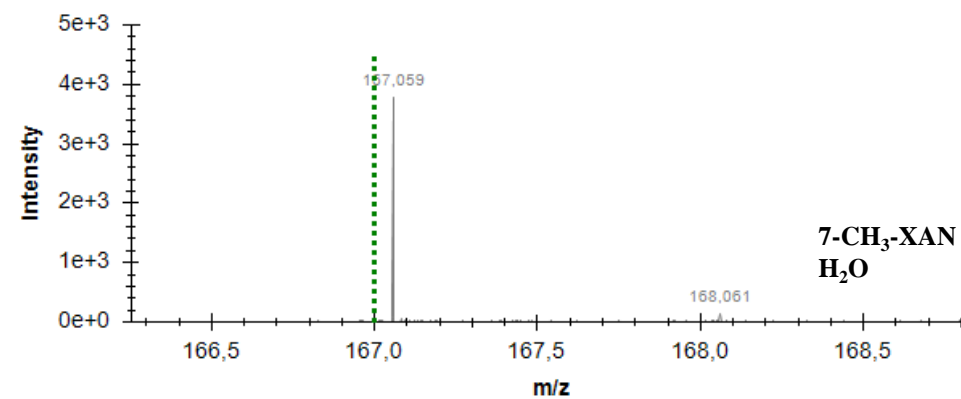
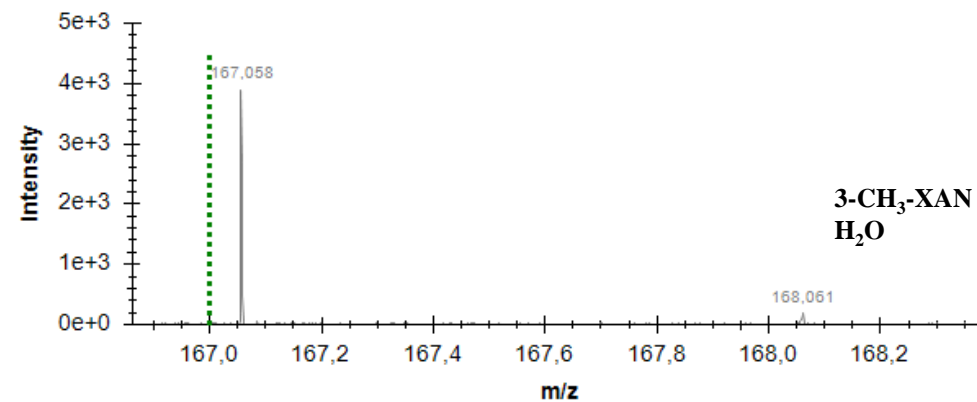
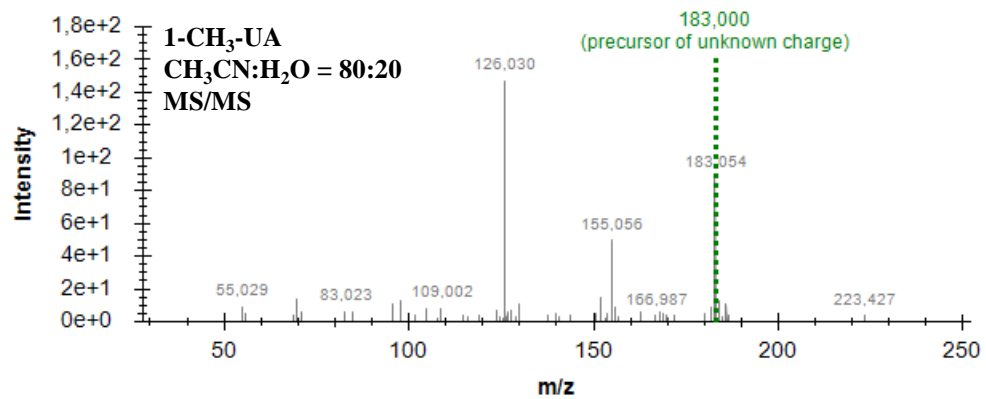
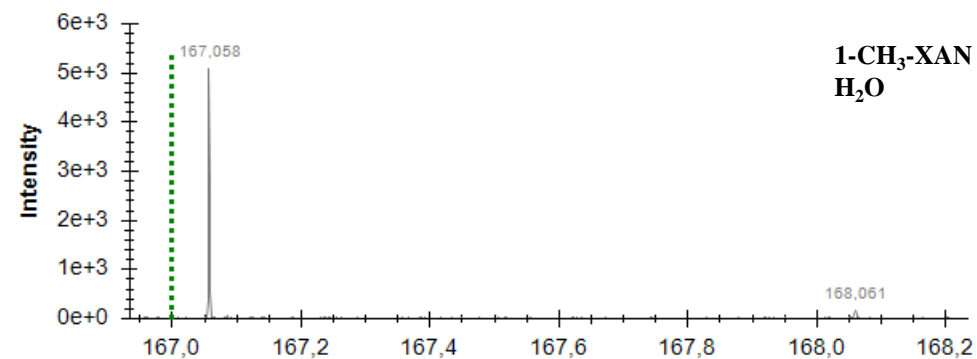
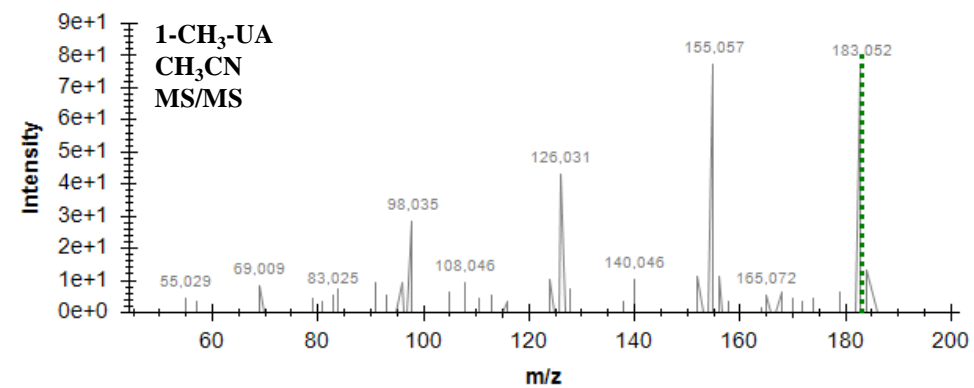


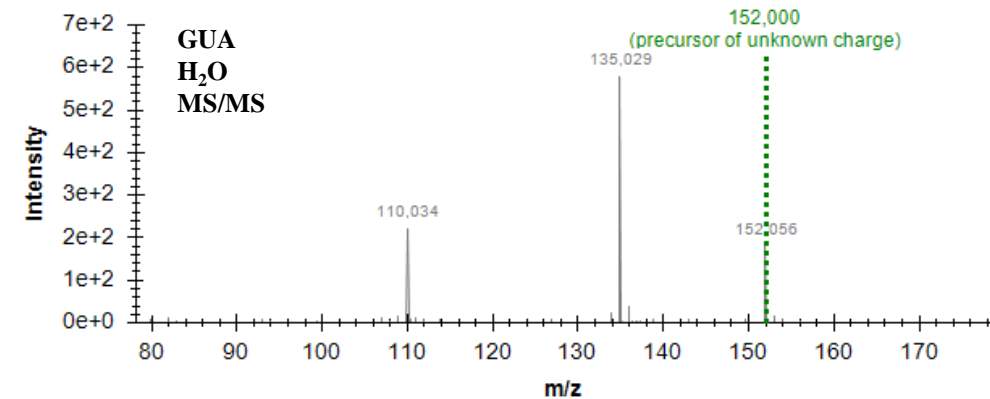
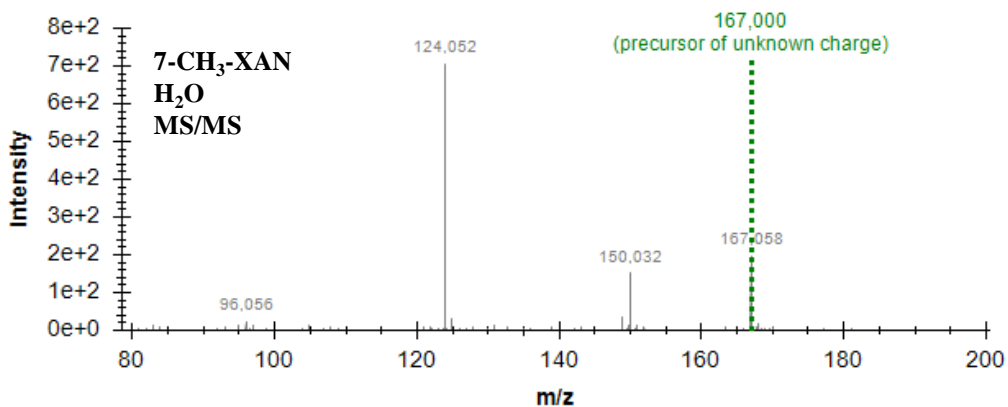
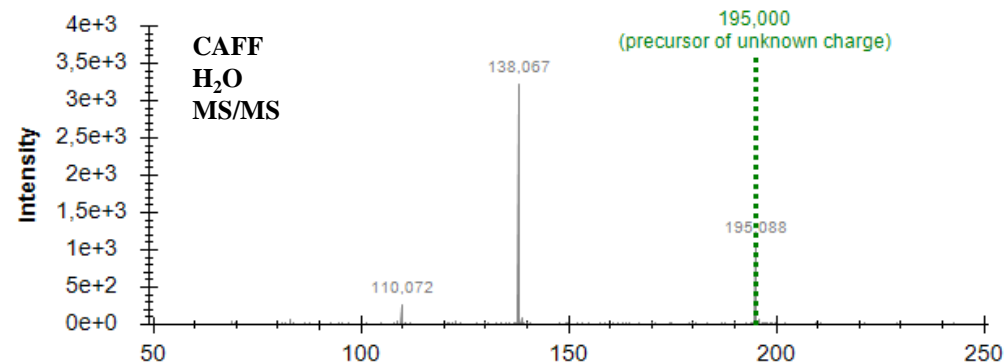
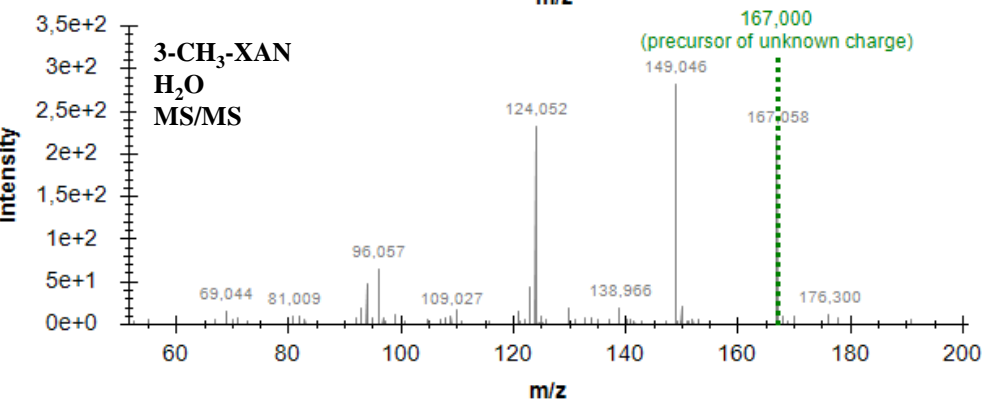
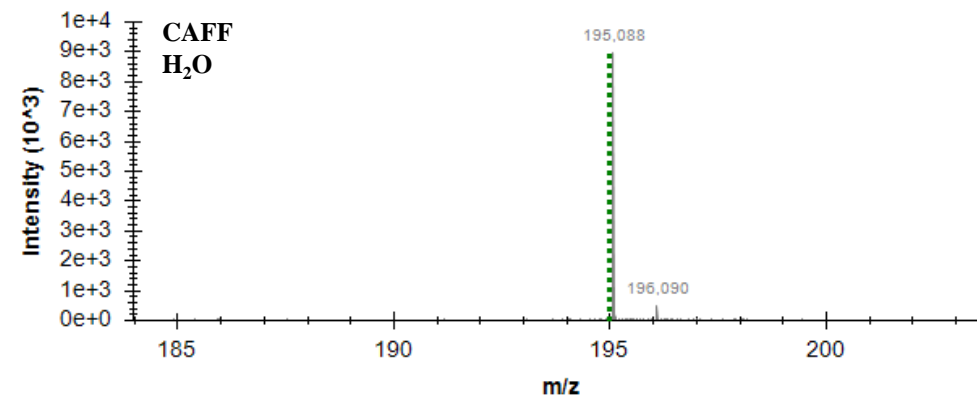
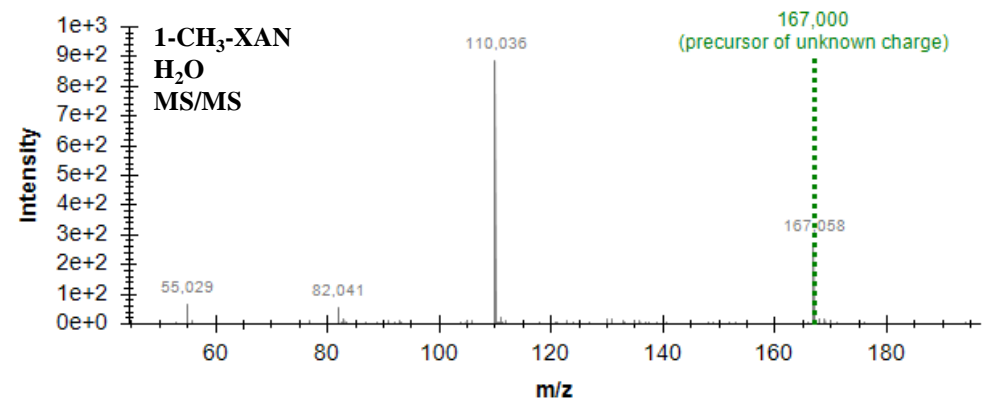


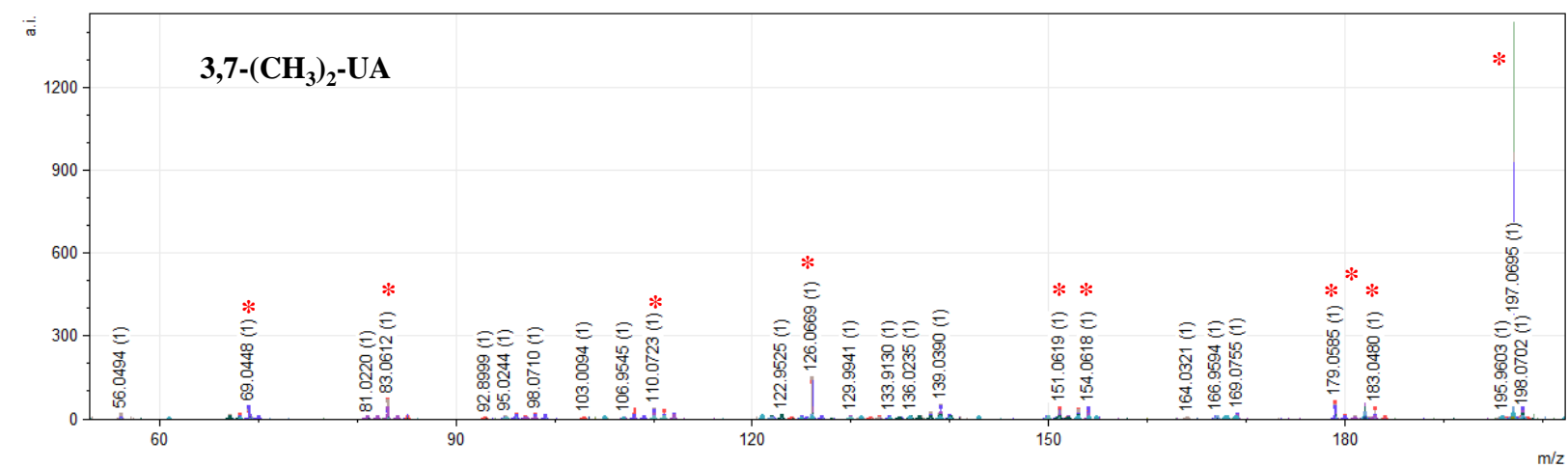
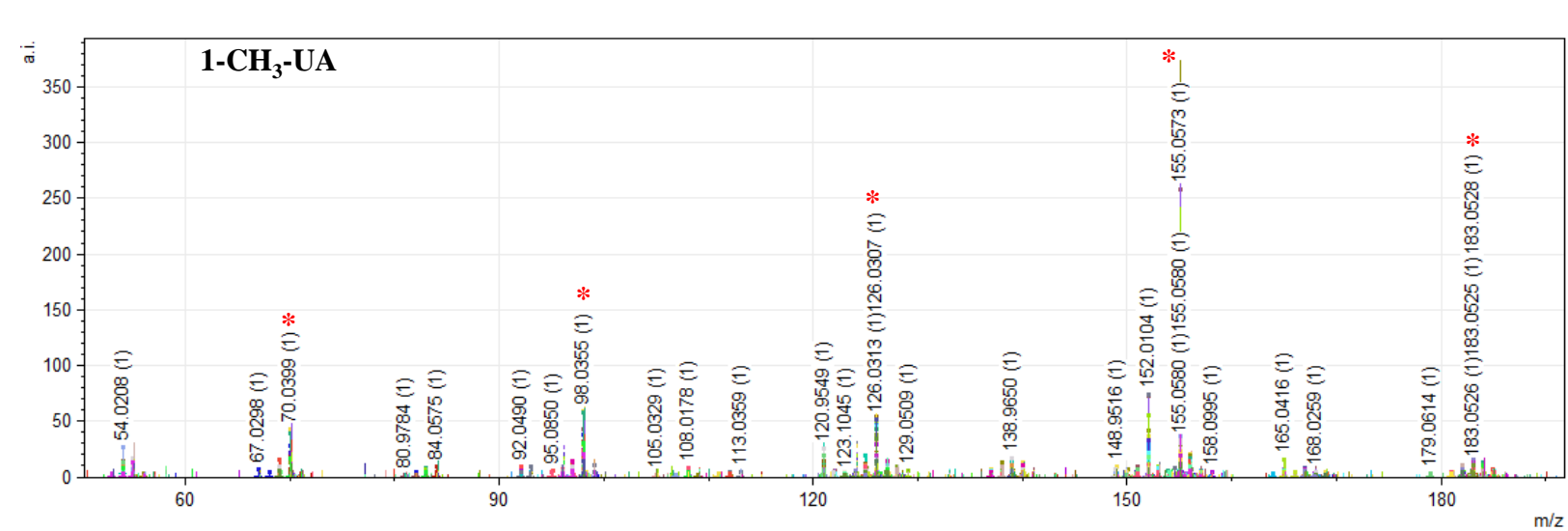


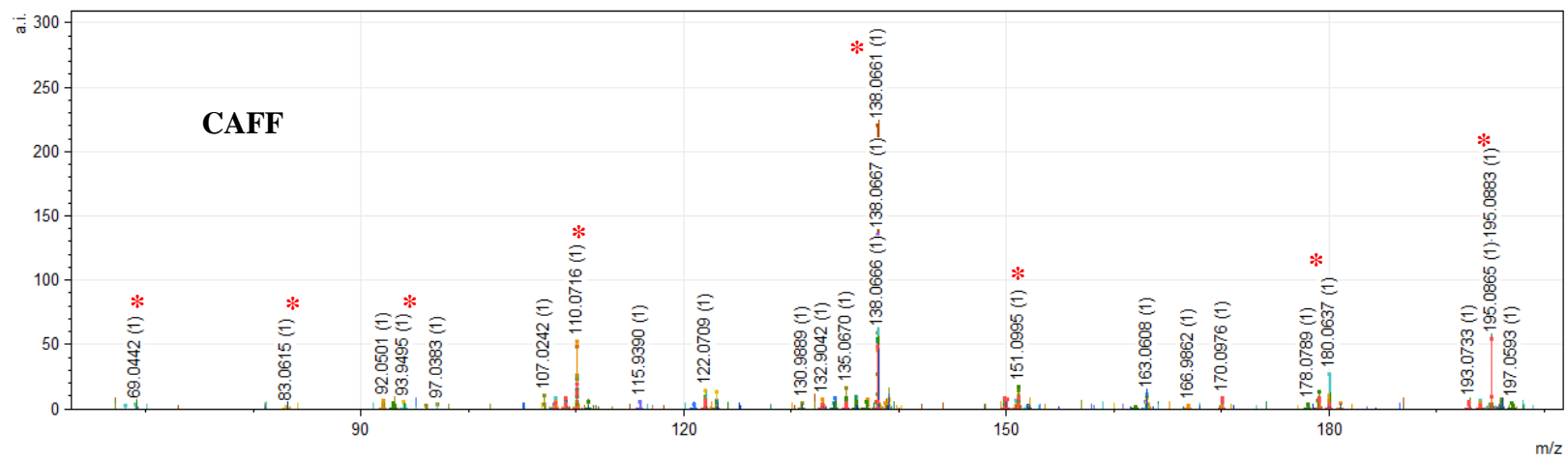


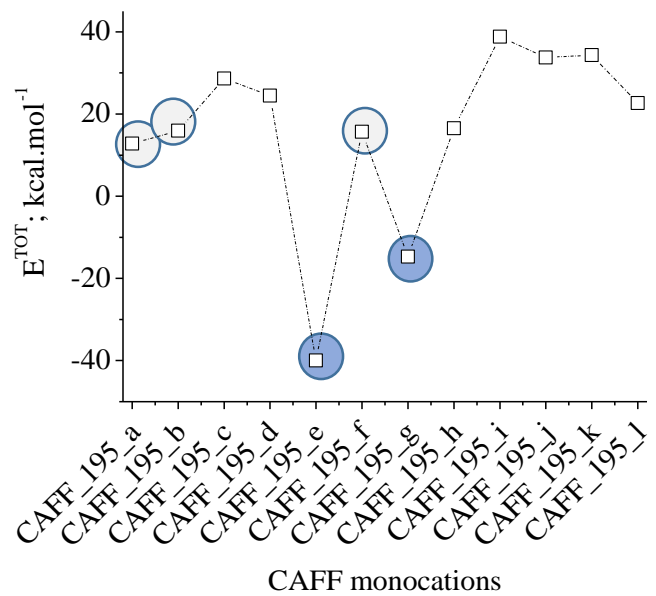
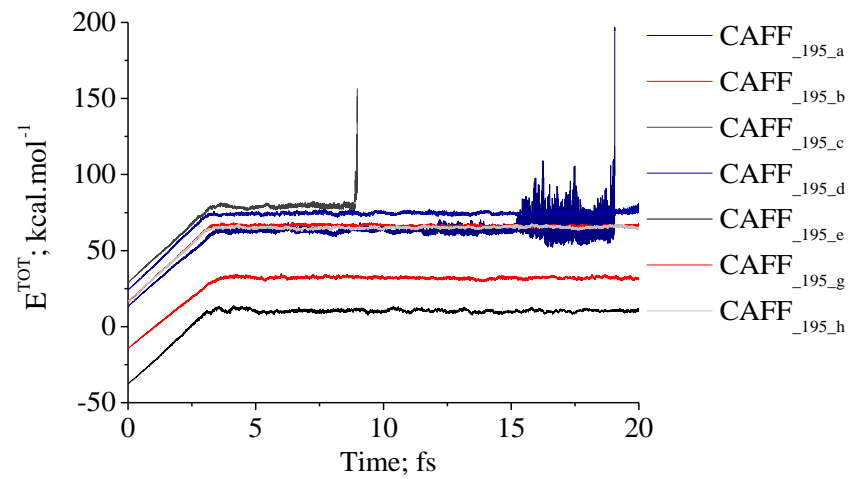


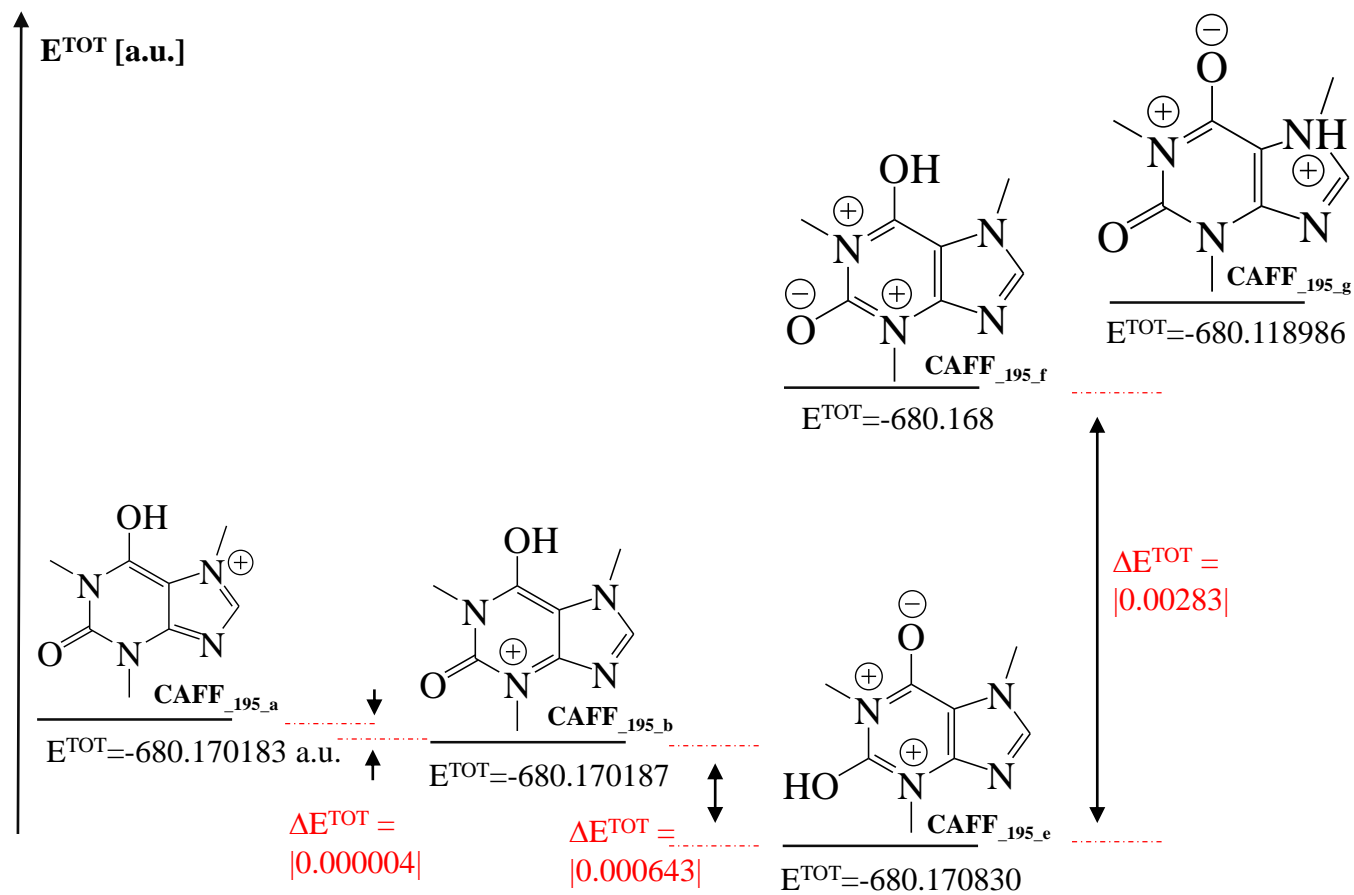
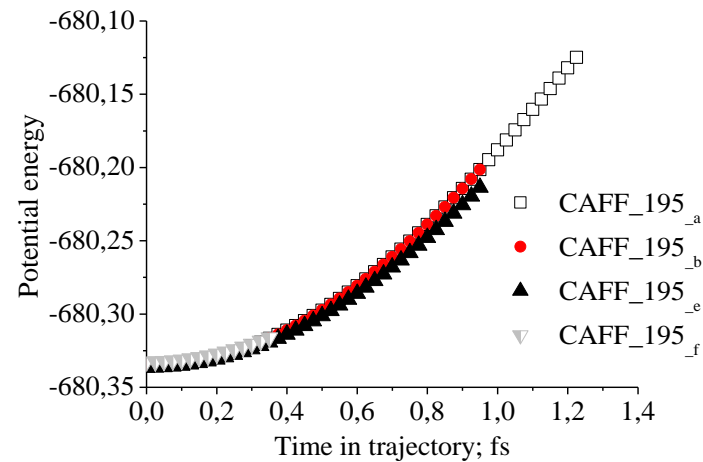
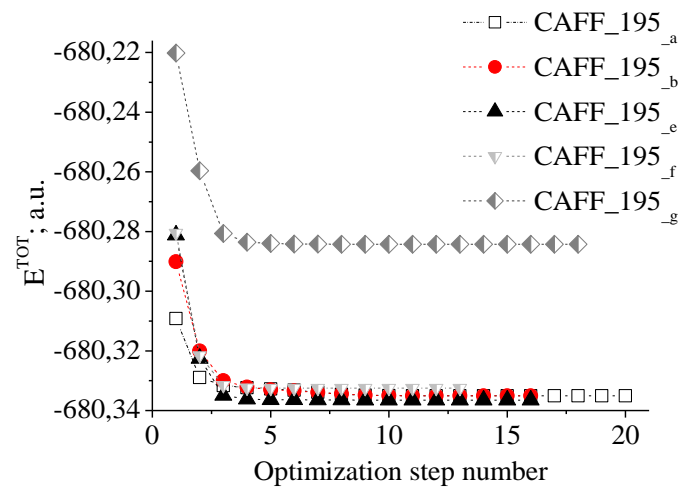


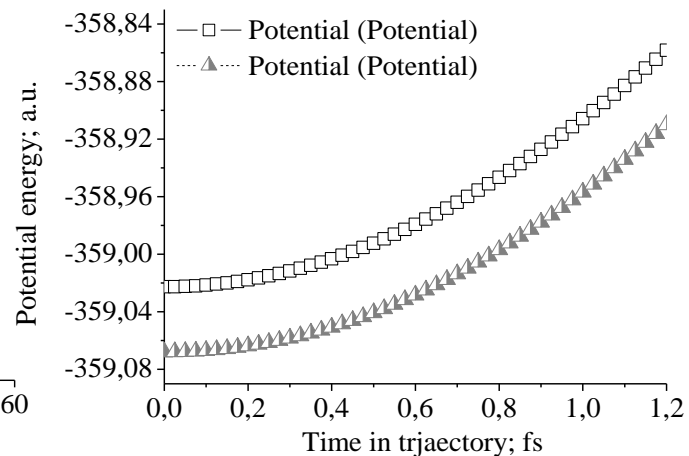
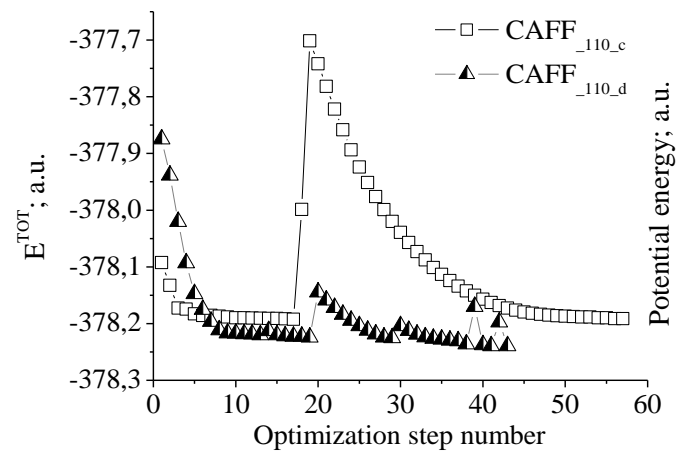
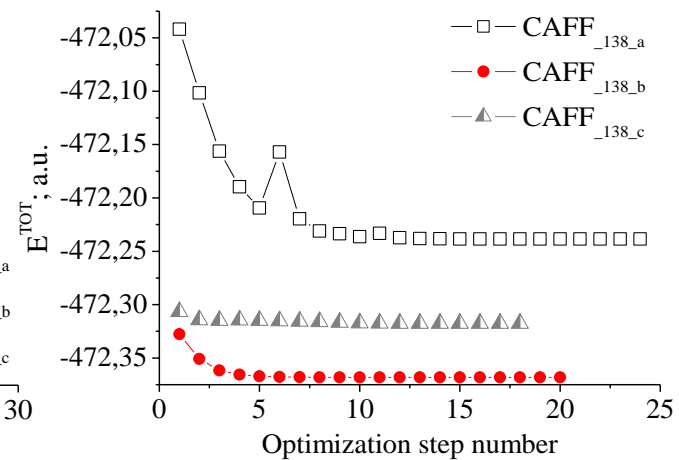
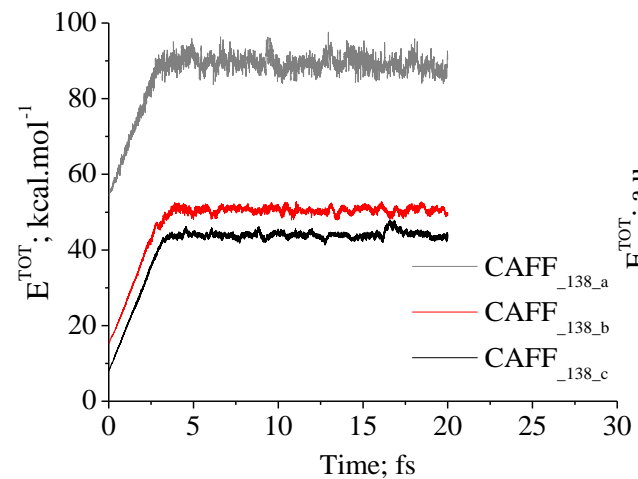


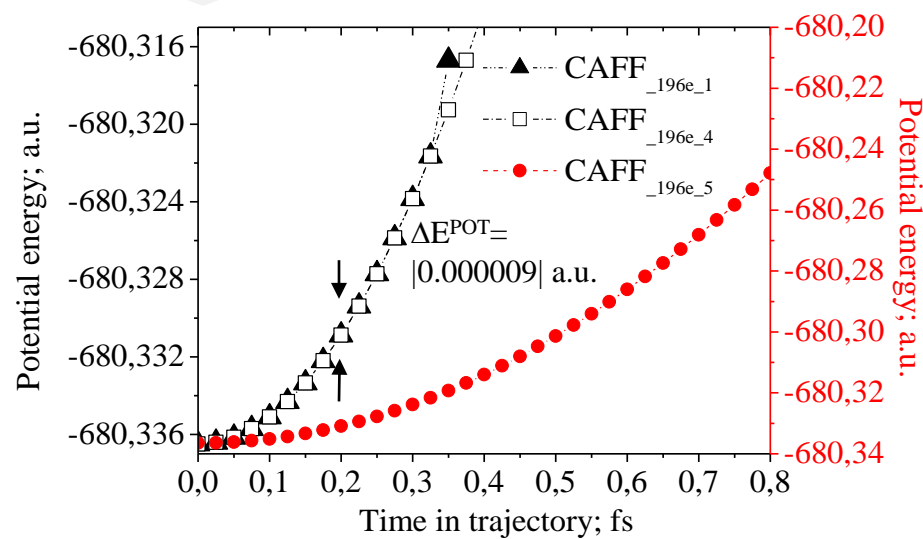
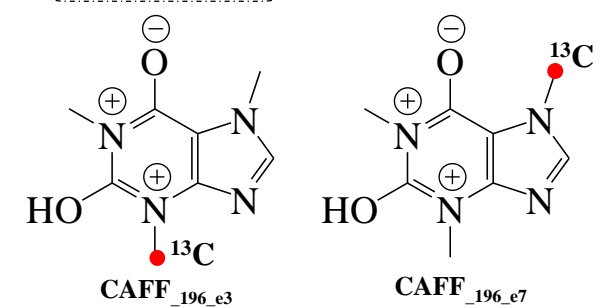
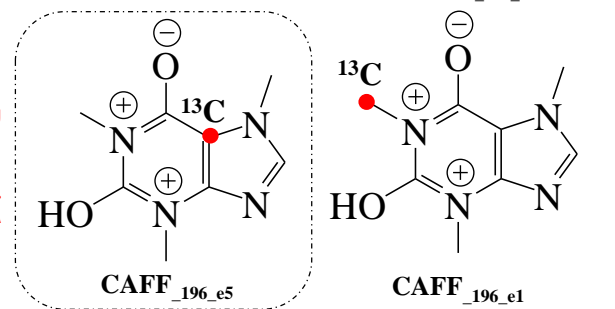
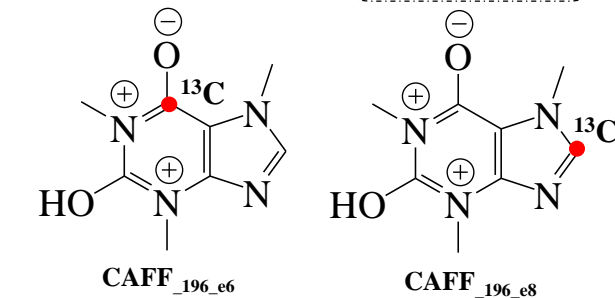
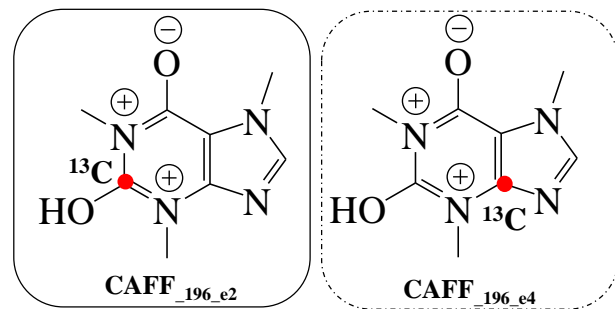
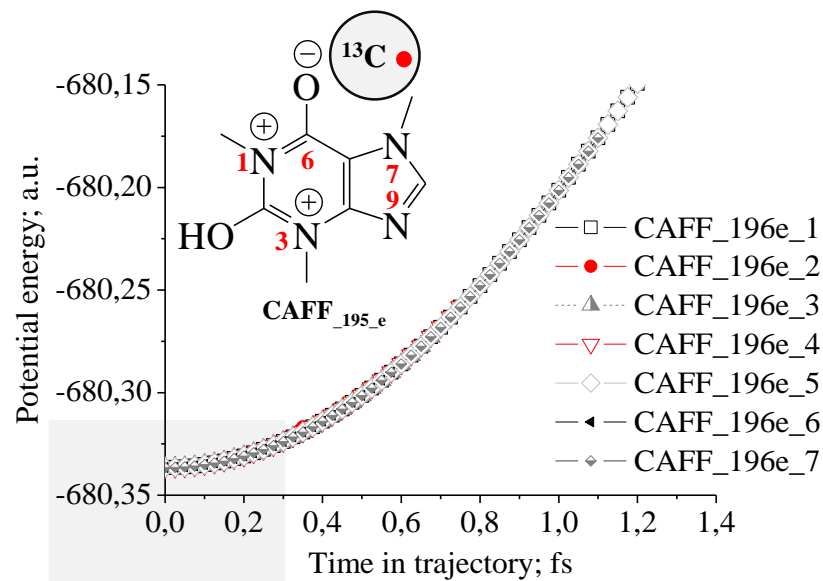


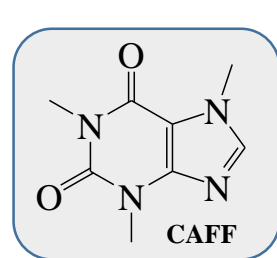
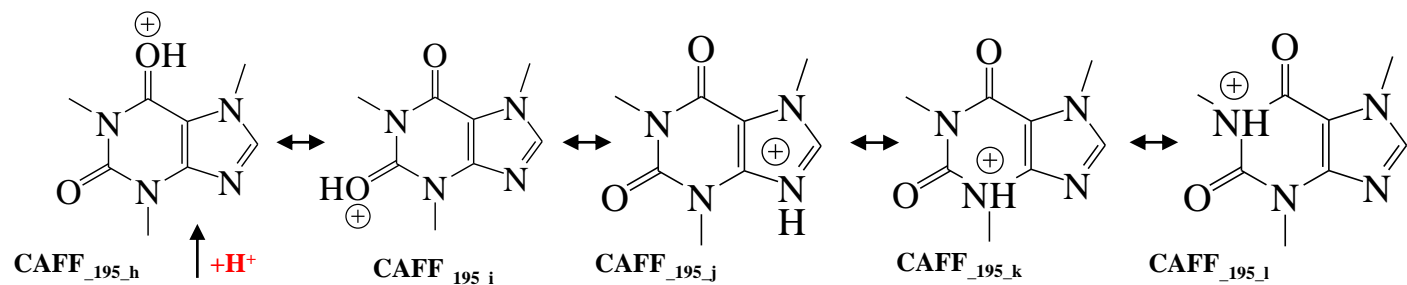




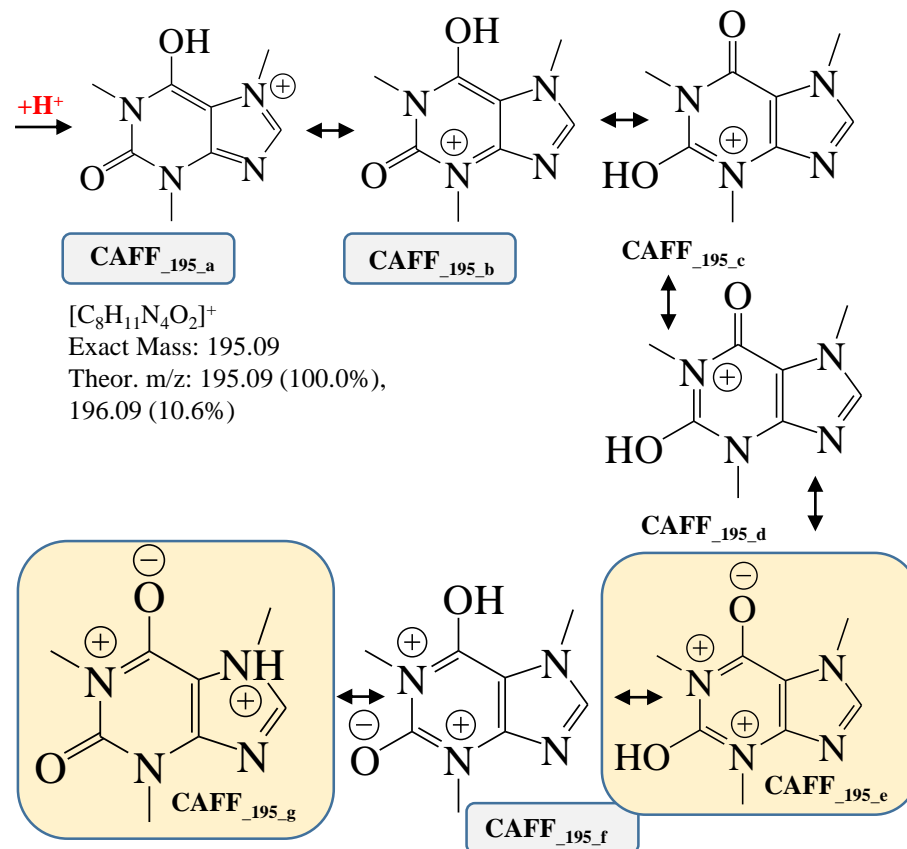
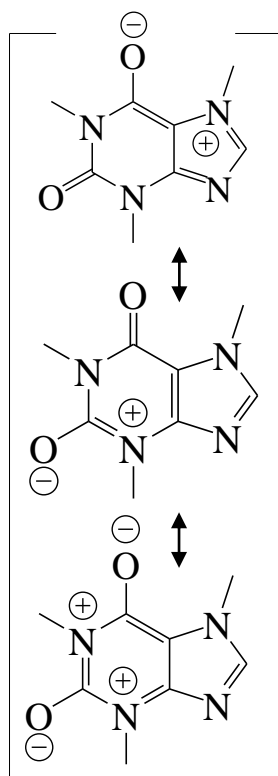








$[\text{C}_8\text{H}_{10}\text{N}_4\text{O}_2]^0$
 Exact Mass: 194.08
 Theor. m/y: 194.08 (100.0%),
 195.08 (10.5%)



$[\text{C}_8\text{H}_{11}\text{N}_4\text{O}_2]^+$
 Exact Mass: 195.09
 Theor. m/z: 195.09 (100.0%),
 196.09 (10.6%)