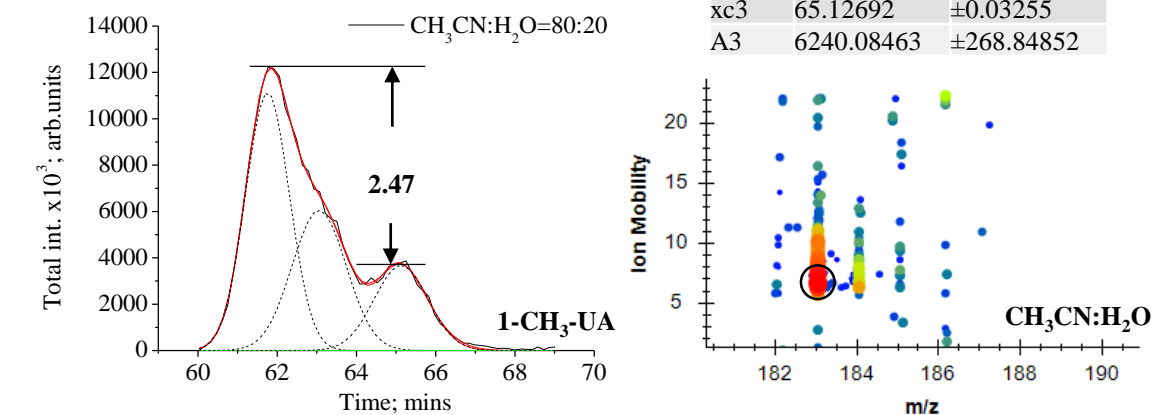
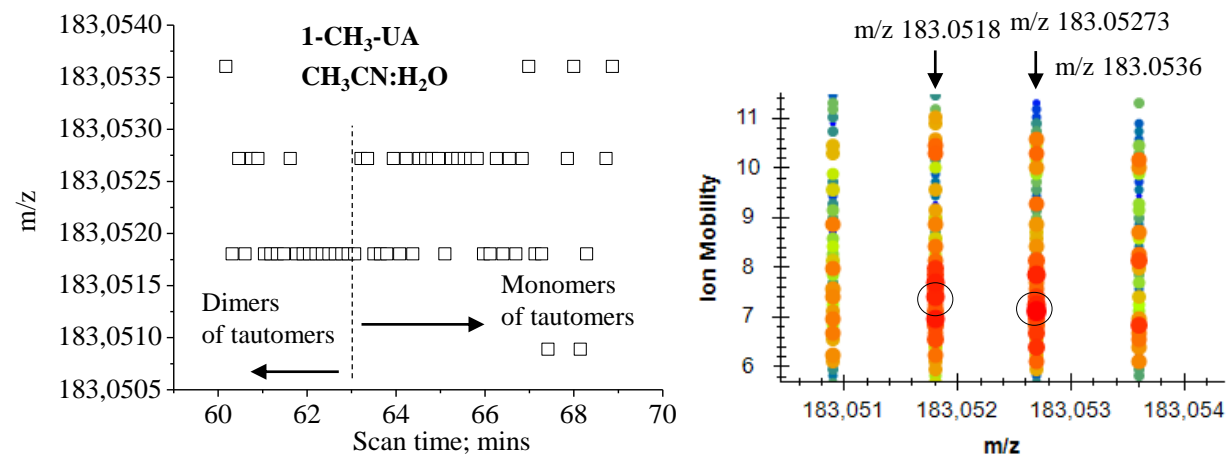
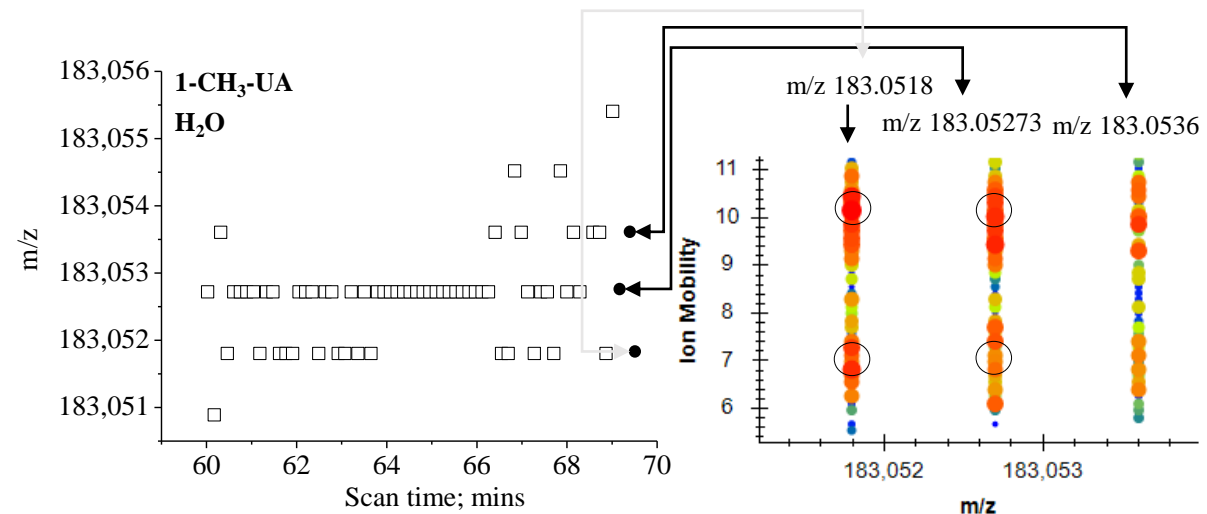
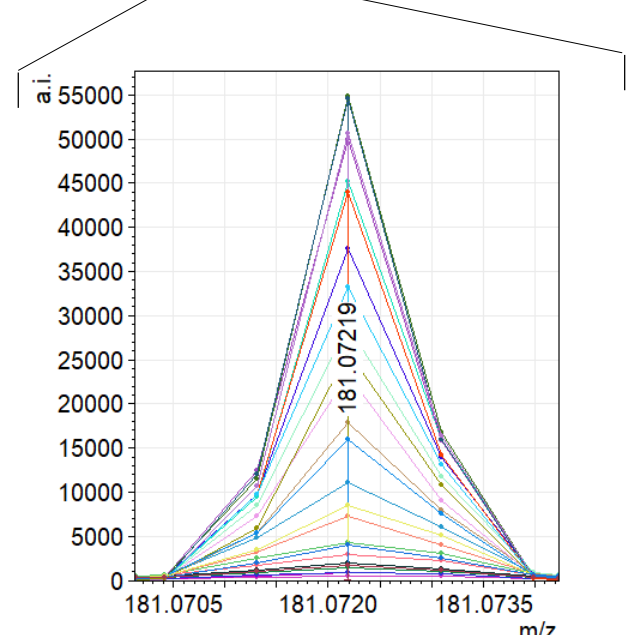
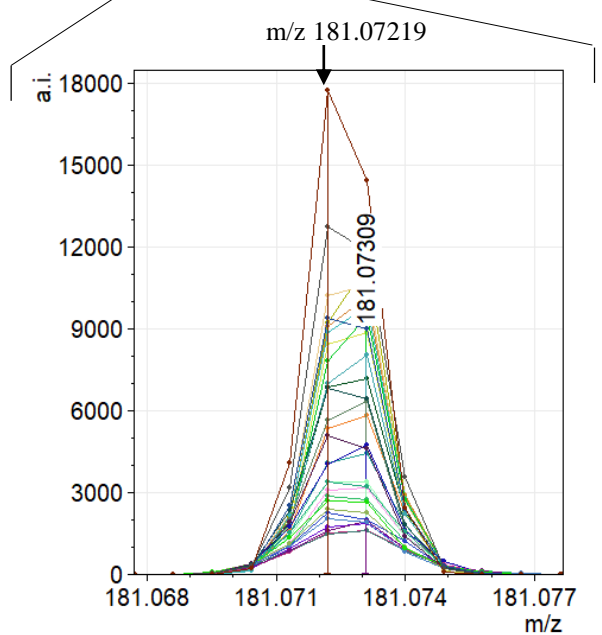
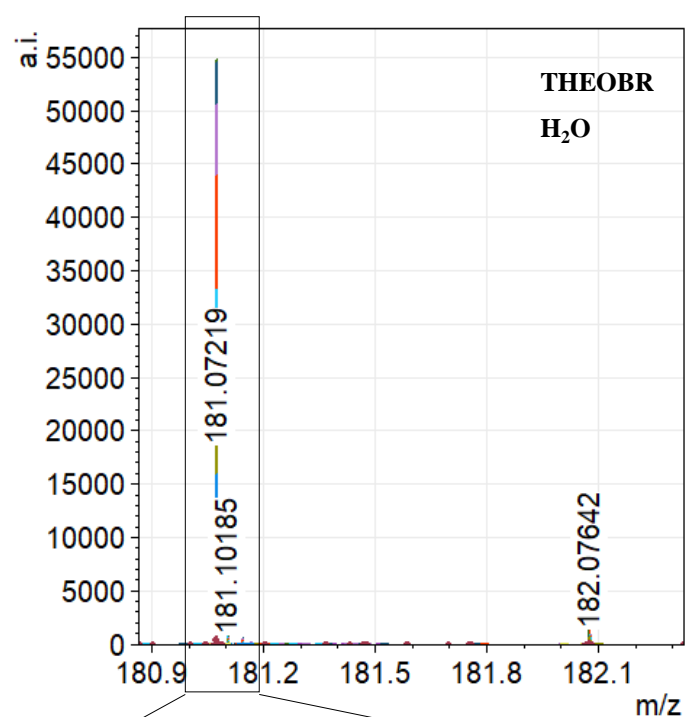
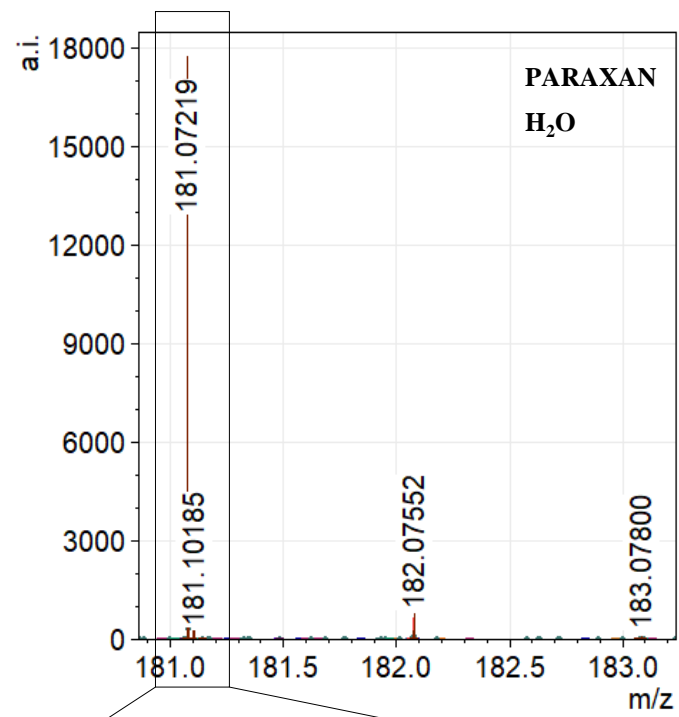
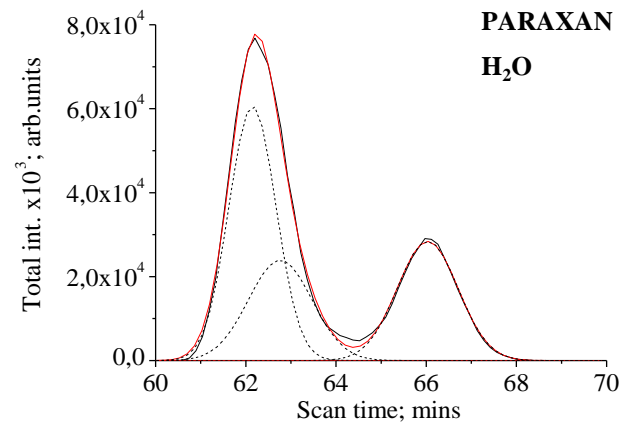


	r^2	
xc1	0.9985 ₁	
A1	61.75557	± 0.02721
A2	15429.35026	± 1018.3183
xc2	63.05823	± 0.06282
A2	10325.26067	± 1183.7067
xc3	65.12692	± 0.03255
A3	6240.08463	± 268.84852

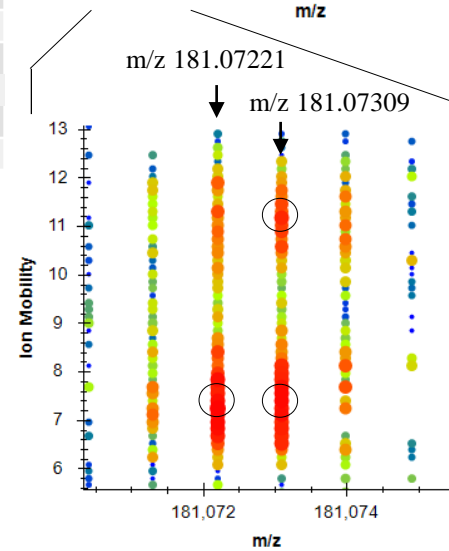
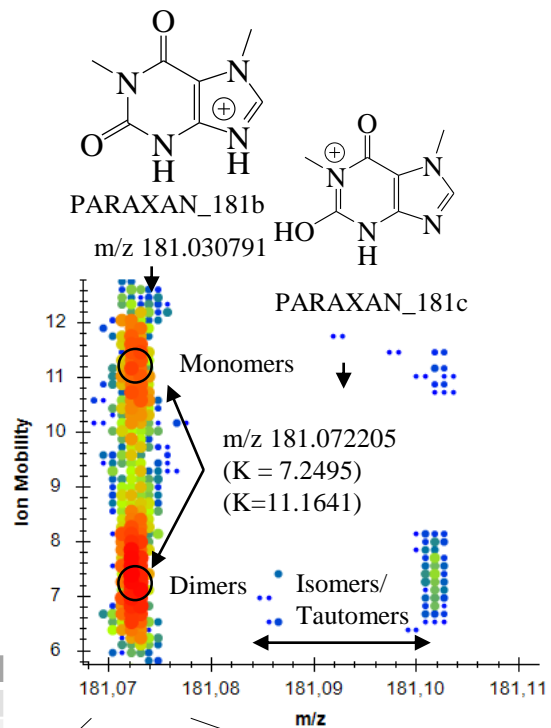
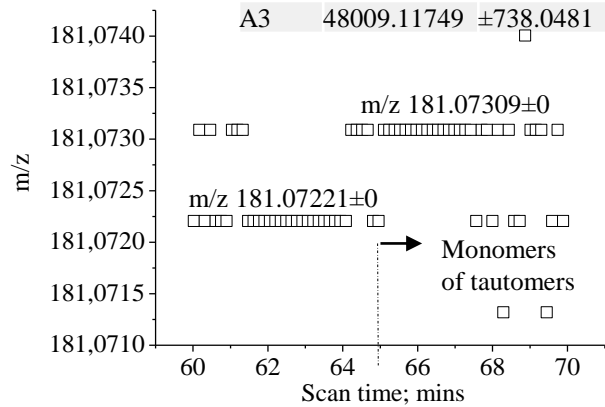


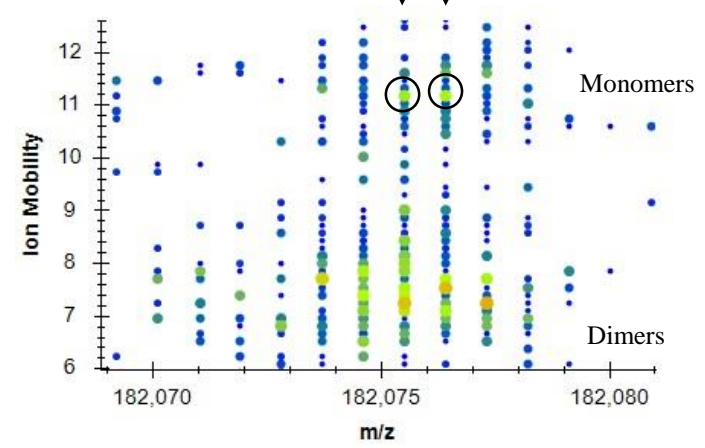
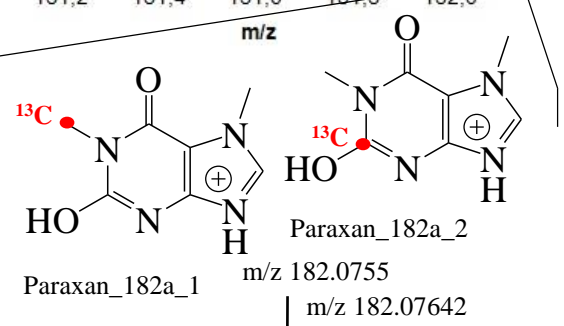
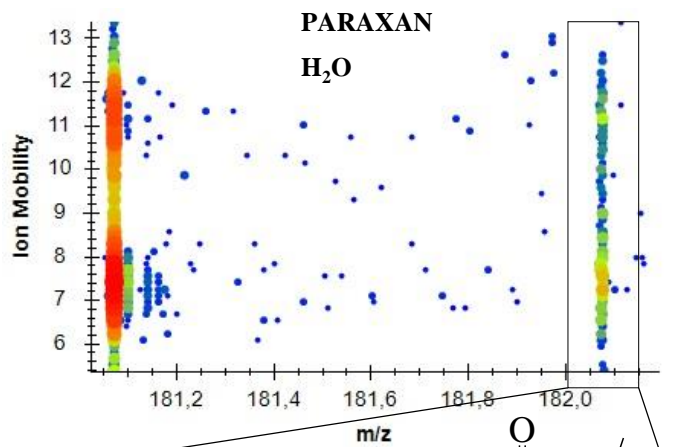


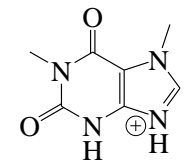
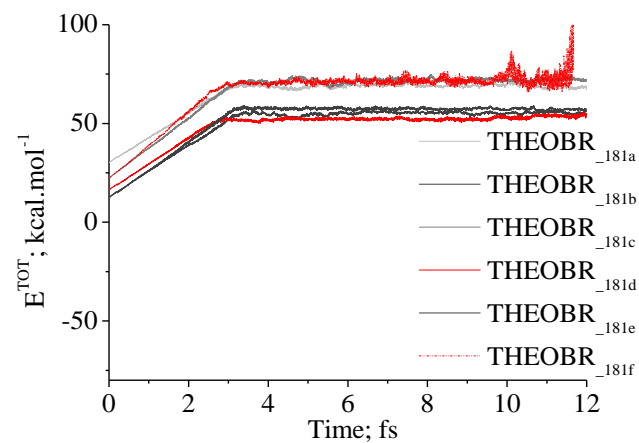
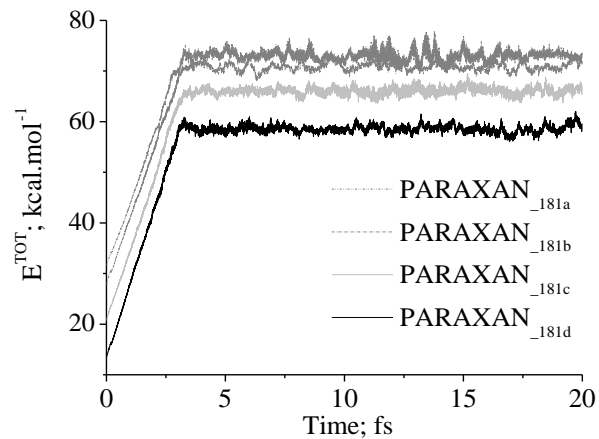




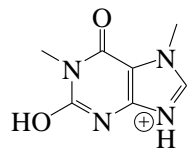
	r^2	0.9981_2	
xc1	62.14848	± 0.0359	
A1	79294.7262	± 42511.19831	
xc2	62.76334	± 0.57214	
A2	42168.17732	± 42796.87	
xc3	66.03124	± 0.01186	
A3	48009.11749	± 738.0481	



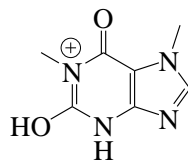




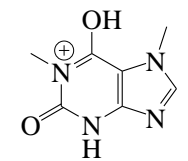
PARAXAN_{181a}



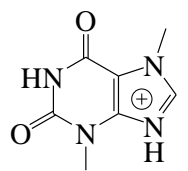
PARAXAN_{181b}



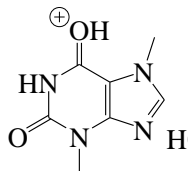
PARAXAN_{181c}



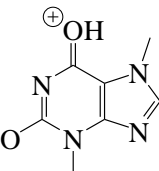
PARAXAN_{181d}



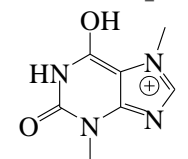
THEOBR_{181a}



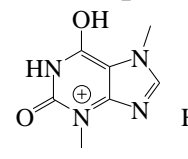
THEOBR_{181b}



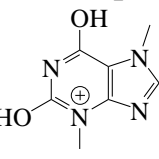
THEOBR_{181c}



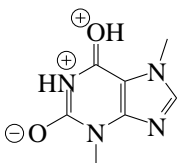
THEOBR_{181d}



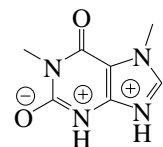
THEOBR_{181e}



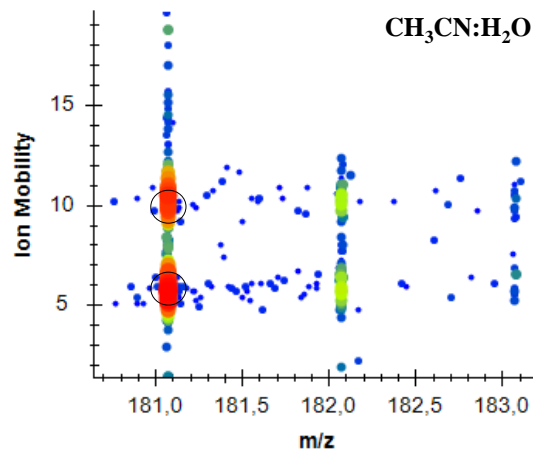
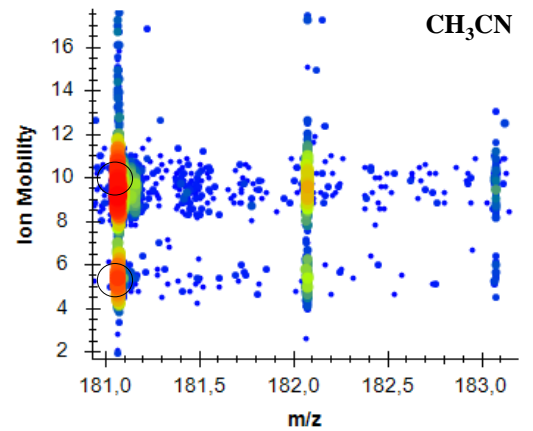
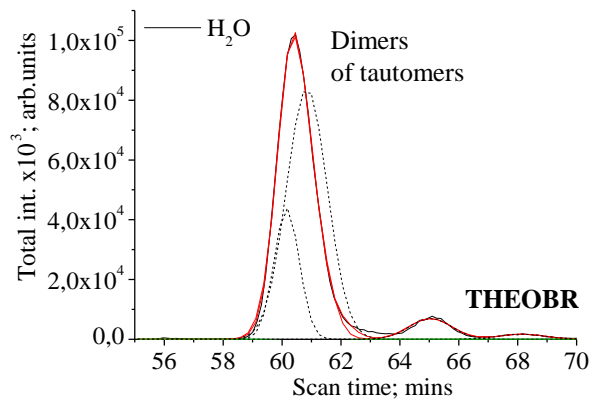
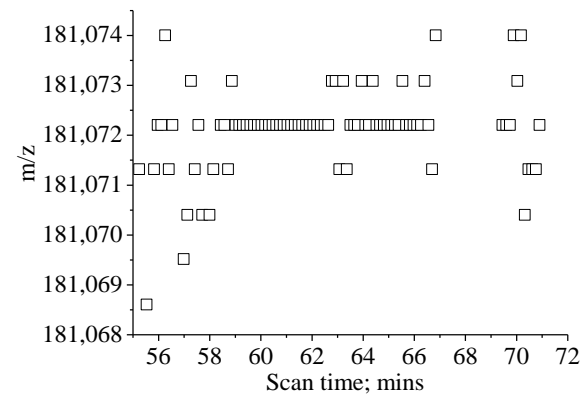
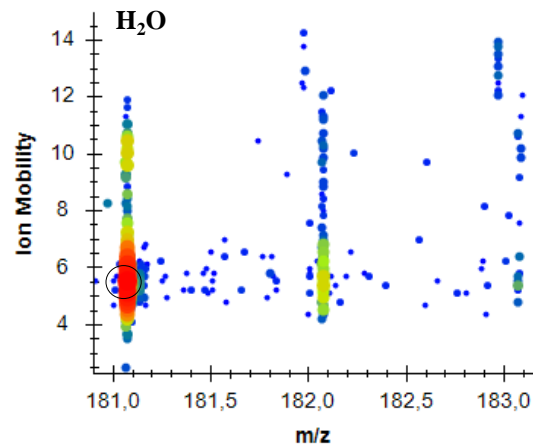
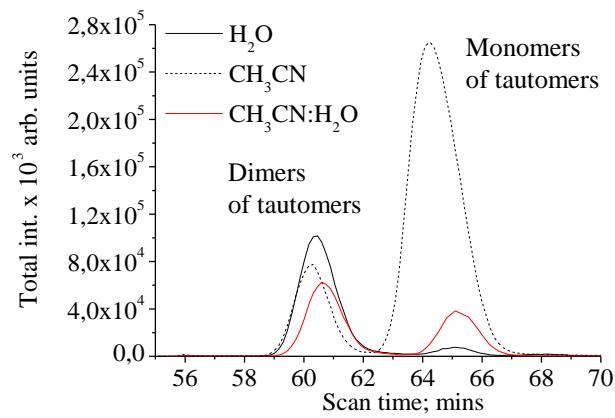
THEOBR_{181f}



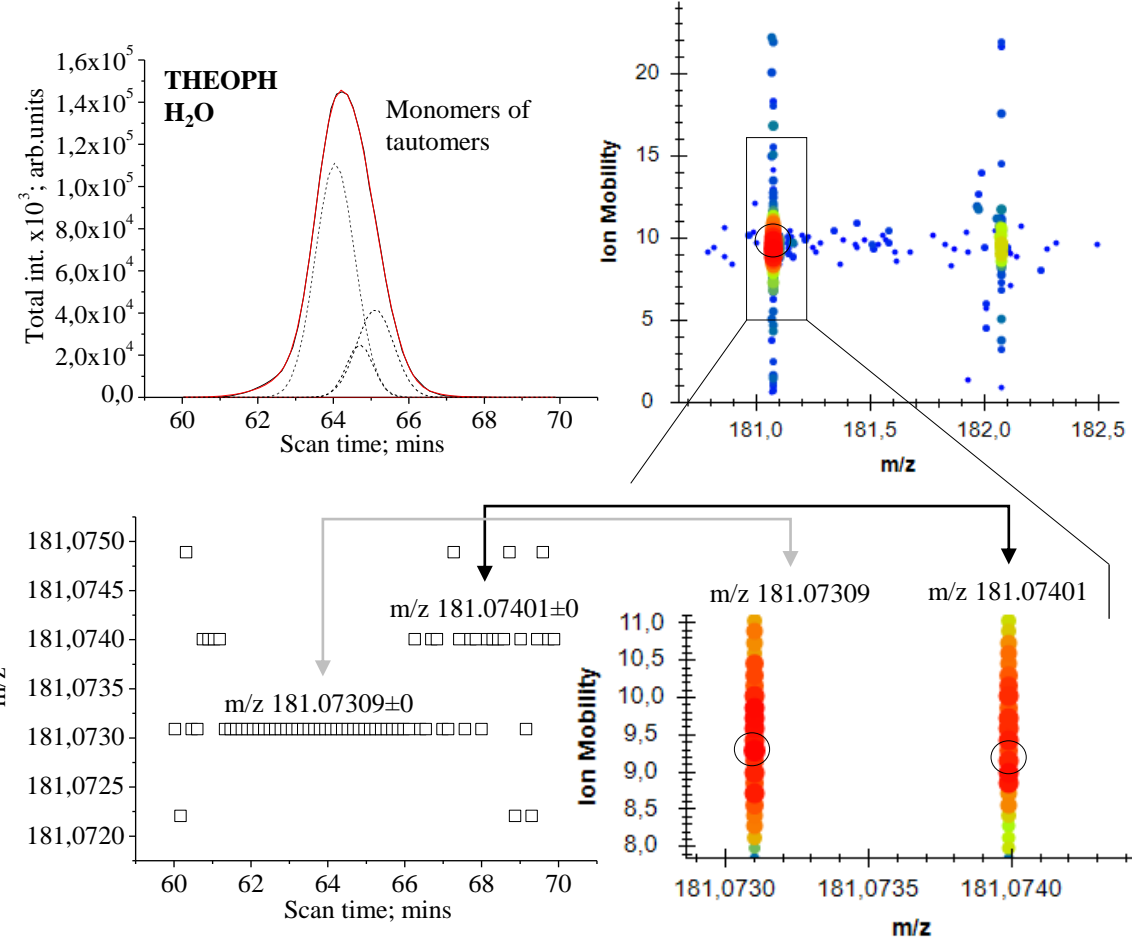
THEOBR_{181_a_ZW}



PARAXAN_{181_a_ZW}



r^2	0.9993 ₉	
xc1	60.8437	± 0.06553
A1	145610.06	± 74307.036
xc2	60.15637	± 0.0812
A2	46803.97	± 26521.1576
xc4	65.03991	± 0.03225
A4	12515.67	± 499.54
xc5	68.15248	± 0.13968
A5	3380.34	± 524.4



r ²	0.9999 ₂	
xc1	64.04728	±0.03334
A1	145589.50	±12969.41864
xc2	64.70197	±0.06083
A2	22269.971	±45247.20394
xc3	64.125861	±0.05498
A3	66017.82474	±8087.88647
xc4	65.10947	±0.39337
A4	51238.90652	±50862.46909

